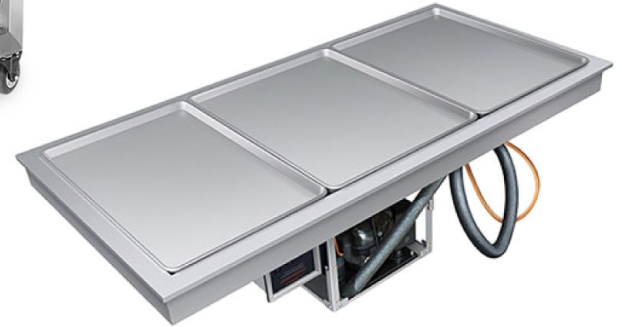


THE
HUB

Combo Drop In Frost Top

ZOZZ
MODULAR FLAT PACK

EASTERN
TABLETOP



Full Frost Top Tile Only — Fits Our Hub & Zozz Tables
66" x 30³/₄"

120V – 800 Watts – 6,7 Amps
– 60 Hertz– 1 Phase

plug type NEMA 6-50P-

- Holds three full size sheet pans
- Remote control panel
- 1/4 hp condenser rotates for installation
- Extra-long refrigerant line
- 1" NPT drain
- NSF 7 approved cold wall construction utilizes a refrigerant that keeps food product cold without drying it out
- Condenser utilizes R-513A refrigerant
- Auto-defrost is activated through an advanced electronic controller programmed at the customer location



#ST5987FT

Stainless Steel Hub Table Frame, 66" x 30³/₄" x 32"H

Includes :

- Stainless steel table
- Bottom Storage Shelf with Stainless steel Edging
- **Full drop in Frost Top Tile**

This frost top is large enough to chill three full size sheet pans filled with eye-catching products to help increase your impulse sales. Its convenient remote control panel can be mounted up to four feet away and makes it easy for your staff to make quick adjustments to the temperature to better accommodate a variety of foods. For easy installation.