



F-1501M_J-SC

Modular Ice Machine
Slim-Line Series

F-1501M_J-SC

12/03/21

Item # 13656

W x D x H
30" x 27^{3/8}" x 34^{5/8}"

F-1501MRJZ-SC
Remote Air-Cooled Soft Cubelet
Shown on optional bin B-900



Item #: _____

Project: _____

Qty: _____


AIA#: _____

Features

► Durable stainless steel exterior

► Advanced CleanCycle24™ design 

► Stainless steel auger with greaseless bearing

- Up to 1417 lbs. of ice production per 24 hrs.
- Infrared bin control for easy cleaning and reliability
- Protected by H-GUARD Plus Antimicrobial Agent 
- 2 second flush cycle every hour
- Flush cycle removes sediment for cleaner ice
- Mount two units, side-by-side, in only 44" of floor space for double the amount of ice production
- R-404A Refrigerant

Available on Bins:

B-250SF B-500SF B-800SF B-1150SS B-1500SS*
B-300SF B-700SF B-900SF B-1300SS B-1650SS*

Top kit may be required; See Bin Spec Sheets. *Two unit application only.

Warranty:

3 Year Parts & Labor on entire machine. 5 Year Parts on Compressor; air-cooled condenser coil. Valid in United States, Canada, Puerto Rico and U.S. Territories. Contact factory for warranty in other countries.

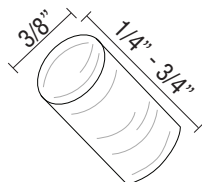
Shipping: (LxWxH) 34.75" x 32" X 40" Volume: 25.74ft³

		ICE PRODUCTION		WATER USAGE		ELECTRICAL							
Condenser	Model	Air / Water Temp Lbs. per 24 hours		Potable Gal. per 100 lbs.	Condenser Gal. per 100 lbs.	kWh Used per 100 lbs.	Max. Fuse Size or HACR Circuit Breaker	Amperage	Voltage	Circuit Wires <small>(including ground)</small>	Heat Rejection BTU/hr.	Refrigerant Charge Amount	Net / Ship Weight (lbs.)
		70°/ 50°F	90°/ 70°F	90°/ 70°F	90°/ 70°F	90°/ 70°F							
Remote	F-1501MRJZ-SC	1417	1101	12.0	N/A	4.30	20A	15.3A	208-230V/60/1	3	13,800	5 lb. 2.5 oz. 9 lbs. 9 oz. †	300 / 325

†(condenser)

Power cord not included

Soft Cubelet Dimensions*



* approximate size in inches, image not to scale

Operating Limits

- Ambient Temp Range 45 - 100°F
- Water Temp Range 45 - 90°F
- Water Pressure 10 - 113 PSIG
- Voltage Range 187-253V

Service

- Panels easily removed and all components accessible for service.
- Removable/cleanable air filter (Air-cooled model only)
- Allow 6" (15 cm) clearance at rear and sides, and 24" (61 cm) clearance at top for proper air circulation and ease of maintenance/service.

Plumbing

- Ice maker Water Supply Line: Minimum 1/4" Nominal ID Copper Water Tubing or Equivalent
- Ice maker Drain Line: Minimum 3/4" Nominal ID Hard Pipe or Equivalent

Line sets for Z models require brazing. Z model head must match Z model remote condenser.

Hoshizaki reserves the right to change specifications without notice.



F-1501M_J-SC

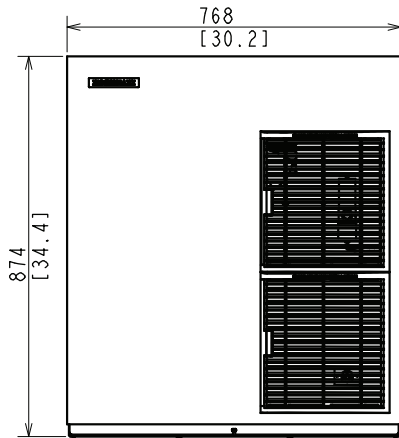
Modular Ice Machine
Slim-Line Series

PRELIMINARY



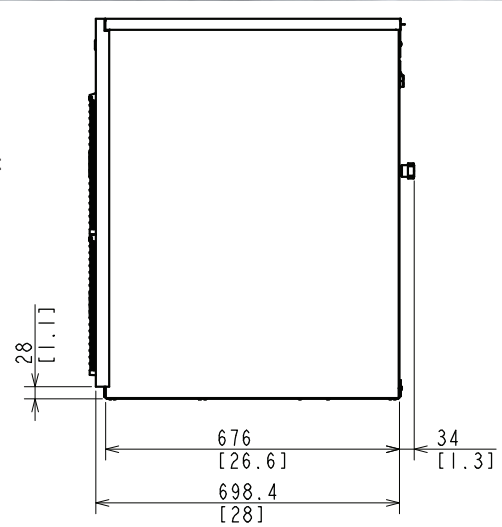
F-1501M_J-SC
12/31/20
Item # 13561

FRONT VIEW



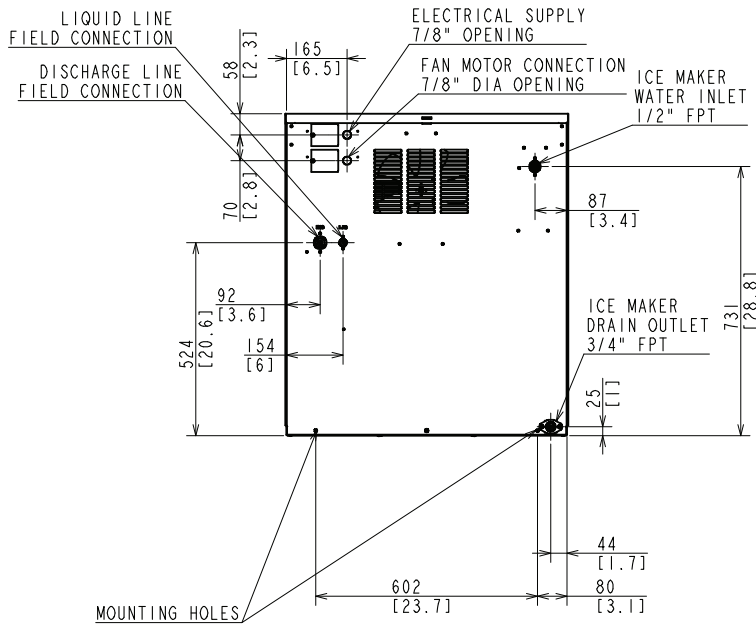
SIDE VIEW

Front
→

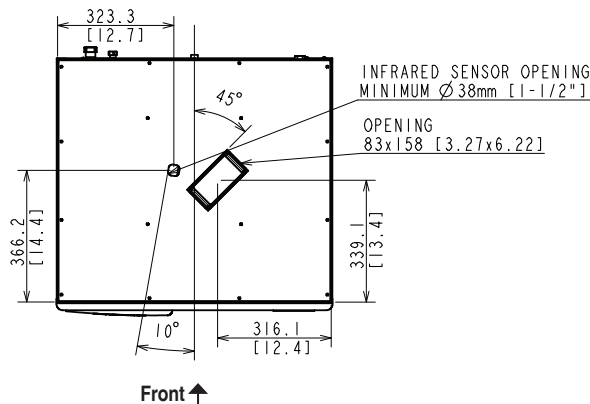


mm
[inch]

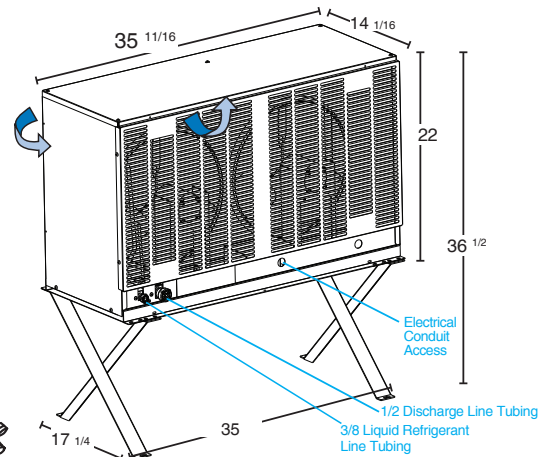
REAR VIEW



BOTTOM VIEW



URC-14FZ Remote Condenser (Sold Separately)
(W x D x H) 35 ¹¹/₁₆ x 14 ¹/₁₆ x 36 ¹/₂
For Use with F-1501MRJZ-SC



Braided Line Sets
(Sold Separately)
25' HS-5604
35' HS-5605
55' HS-5606

Voltage supply for the URC Remote Condenser is supplied from the Ice Maker. No additional circuit is required.