

Master Series Heavy-Duty Combination Top Range

Project _____
 Item _____
 Quantity _____
 CSI Section 11400
 Approved _____
 Date _____

Models

- M43-1R • M43-2R • M43-3R
- M43-1S • M43-2S • M43-3S
- M43-1T • M43-2T • M43-3T



Model M43-2R
Shown with Optional
Backguard

Standard Features

- Stainless steel front and sides.
- 6" (152mm) chromed steel adj. legs
- 7-1/2" (191mm) stainless steel front rail
- Two, 24,000 BTU (7kW) natural gas, 20,000 BTU (5.86kW) propane Starfire Burners per section
- Removable cast-iron top and ring grates
- One-piece stainless steel drip tray
- Extra heavy duty cast-iron even-heat hot top sections with "H" burners, 22,000 BTU (6.45kW) each
- Separate control valves for each burner
- Stainless steel burner box bottom
- Piezo spark ignition for oven
- 40,000 BTU (11.72kW) natural gas, 35,000 BTU (10.25kW) propane cast-iron oven burner.
- Fully porcelainized oven interior

Options & Accessories

- Stainless steel main back
- Stainless steel common front rail up to 102" (2591 mm) wide (two or more units in a battery)
- Stainless steel oven interior
- Convection oven base, add C to model #, e.g. M43-1RC
- Additional oven rack
- Rear gas connection, 3/4", 1" or 1-1/4" NPT
- Gas regulator 3/4" or 1-1/4"
- Gas shut off valve; 3/4", 1" or 1-1/4" NPT
- Gas flex hose & quick disconnect (3/4", 1" or 1-1/4" NPT x 5") w/ restraining device, please specify
- End caps and cover (NC specify)
- Set of 4 Polyurethane non-marking swivel casters w/front brakes
- 6" (152mm) stainless steel adj. legs
- Dais base (not for use with RC oven)
- Storage base shelf of aluminized or stainless steel
- Stainless steel tubular high shelf, single or double-deck
- Stainless steel backguard: 10" (354mm), 17" (432mm) or 33" (838mm)
- Stainless steel equipment stand option for modular top models.
- 230 volt, 50 cycle components, RC motor (export)
- Celsius dial for oven thermostat (NC)

Specifications

Heavy duty gas range with oven, open burners and hot top sections combined. Hot top sections each 11-5/16" (286mm) wide cast-iron even-heat, 22,000 BTU (6.45kW). Open top Starfire burners, 24,000 BTU (7.0kW) each, two burners per section with removable cast-iron top and ring grates. Range body is 34" (864mm) wide x 38" (965mm) deep, including 7-1/2" (191mm) deep stainless steel front rail. Porcelain enamel oven interior with cast-iron oven burner. Stainless steel front and sides. Natural or propane gas. Models available with oven base sections (suffix R) storage base with cabinet door (suffix S), or modular top units (suffix T).

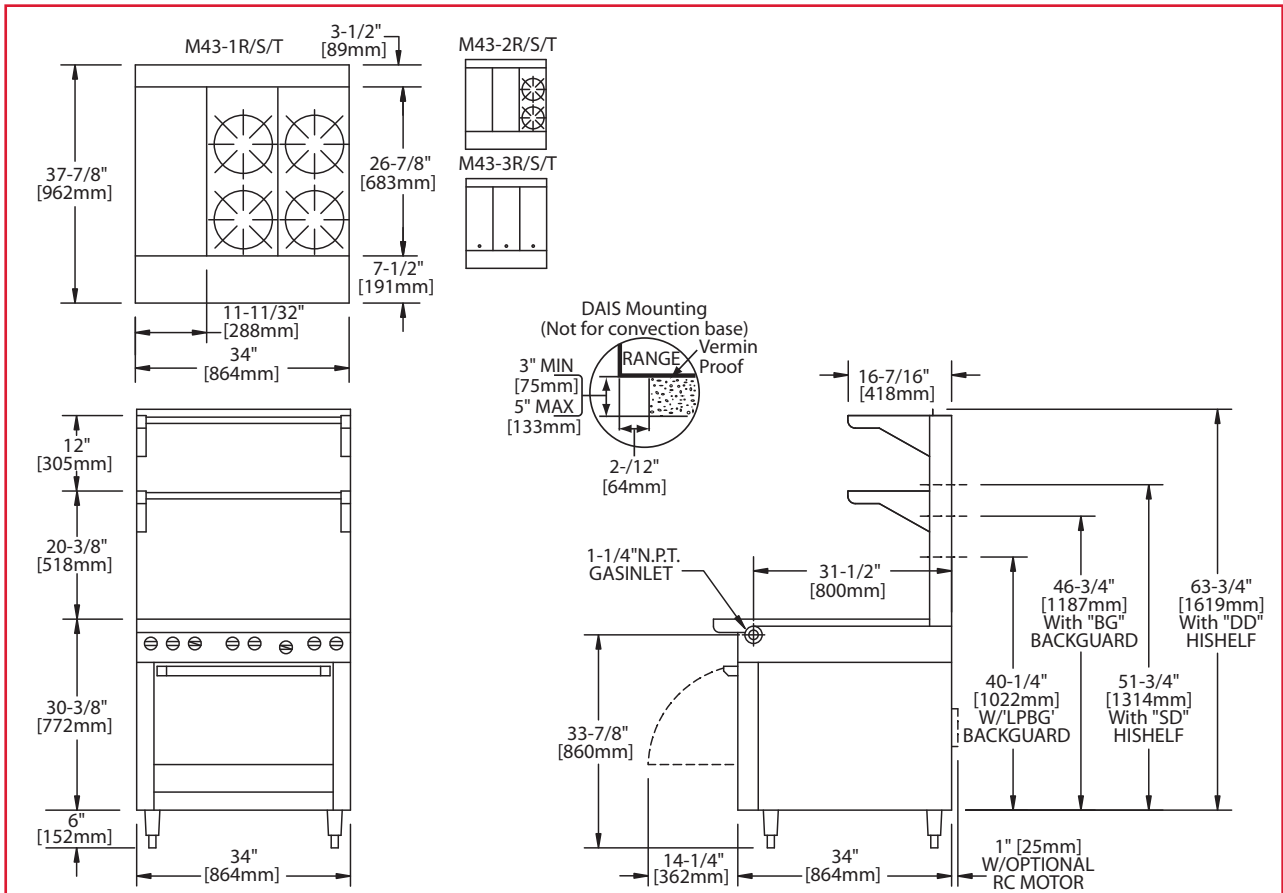
NOTE: Ranges supplied with casters must be installed with an approved restraining device.

NOTE: All Master Series ranges, attachments, fryers, and broilers require a high shelf or backguard flue attachment - sold separately.



Master Series Heavy-Duty Combination Top Range

Master Series Heavy-Duty Combination Top Range



Product	Width: In (mm)	Depth: In (mm)	Height: In (mm) (w/ NSF Legs)	Height: In (mm) (w/o NSF Legs)	Oven/Storage Base Interior: in(mm)		
					Width	Depth	Height
M43-XR	34 (864)	38 (965)	36-3/8 (924)	30-3/8 (772)	26-1/4 (667)	29 (737)**	13-1/2 (343)
M43-XS	34 (864)	38 (965)	36-3/8 (924)	30-3/8 (772)	26 (665)	30-1/2 (773)	20-1/2 (519)
M43-XT	34 (864)	38 (965)	36-3/8 (924) w/stand	9-1/2 (241) w/o stand*	N/A	N/A	N/A

X=1, 2, or 3 NOTE: *Modular top has 1-1/2" seating flanges. Stand sold separately. **RC oven is 25"(635mm) deep.

Total INPUT BTU/Hr (kW) NG	M43-1R	M43-1S/T	M43-2R	M43-2S/T	M43-3R	M43-3S/T
Hot Top Section(s)	22,000 (6.45)	22,000 (6.45)	44,000 (12.90)	44,000 (12.90)	66,000 (19.35)	66,000 (19.35)
Open Burner Section(s)***	96,000 (28.00)	96,000 (28.00)	48,000 (14.00)	48,000 (14.00)	-	-
Oven***	40,000 (11.72)	-	40,000 (11.72)	-	40,000 (11.72)	-
Total	158,000 (46.17)	118,000 (34.45)	132,000 (46.17)	92,000 (26.90)	106,000 (31.07)	66,000 (19.35)

RC=Range w/Convection Oven R=Range w/Oven S=Range w/Storage Base T=Modular Top

***Open Top Burner rated 20,000 BTU (5.86kW) and Oven rated 35,000 BTU (10.25kW) for Propane gas

Installation Notes			Shipping Wt: (Lb/Kg)
Combustible Wall Clearances ¹	Entry Clearances	Operating Pressure	M43-XR 470/214
Sides: 11" (279mm)	Crated: 39-1/4" (997mm)	Natural: 6" WC (15mbar)	M43-XS 370/163
Back: 6" (152mm)	Uncrated: 34-1/4" (870mm)	Propane: 10" WC (25mbar)	M43-XT 280/128

¹NOTE: Installation clearance reductions are applicable only where local codes permit.

²Shipping Cubic Feet 50 for R & S Models, 20 for T models

Data applies only to North America

Gas input ratings shown here are for installations up to 2,000 ft. (610m) above sea level. Specify altitudes over 2,000 ft.

Electrical characteristics each RC oven: 1/3 HP motor, 120 VAC, single phase, 3.4 amps, 6 ft. (1.8m) power cord with NEMA 5-15P plug provided. 230 VAC export is direct connect, single phase, 50 Hz. Please specify gas type when ordering.

Garland reserves the right to make changes to the design or specifications without prior notice.