

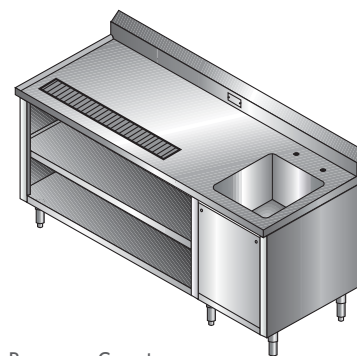
### Beverage Counters

- Top: 16 Gauge 300 Series Stainless Steel
- Body and Undershelves: 18 Gauge 300 Series Stainless Steel
- Legs: Stainless Steel with adjustable bullet feet
- One-piece die formed top with integral splash and inverted "V" no-drip edge to contain spillage
- 16" x 18" x 12" sink bowl integral with top
- 1" x 5" urn trough is integral with top and supplied with anti-splash grate
- Trough is furnished with 1" Stainless Steel drain fitting
- 2" x 4" receptacle box is supplied in splash for mounting of electrical components
- Removable panel on cabinet body provides easy access to plumbing components
- Glass rack slides provide convenient storage for dish racks or glasses and cups



Model No.	L x W		Approx. Weight		Cubic Ft.
	(In.)	(mm.)	(Lbs.)	(Kg.)	
BC-48*	48 x 30	1219 x 762	180	82	41
BC-60*	60 x 30	1524 x 762	235	107	52
BC-72*	72 x 30	1829 x 762	265	120	62
BC-84*	84 x 30	2134 x 762	295	134	72
BC-96*	96 x 30	2438 x 762	325	148	93

\*Specify R for bowl on right, L for bowl on left.



Beverage Counter

### Beverage Counter with Rack Slides

Model No.	L x W		Approx. Weight		Cubic Ft.
	(In.)	(mm.)	(Lbs.)	(Kg.)	
BCRS-48*	48 x 30	1219 x 762	185	84	41
BCRS-60*	60 x 30	1524 x 762	240	109	52
BCRS-72*	72 x 30	1829 x 762	270	123	62
BCRS-84*	84 x 30	2134 x 762	300	136	72
BCRS-96*	96 x 30	2438 x 762	330	150	93

\*Specify R for bowl on right, L for bowl on left.



Beverage Counter with Rack Slides

### Beverage Counter Options

Model No.	Description	Qty.
TAC-8	Urn Troughs	Lin. Ft.
TAC-6RS	Dish Rack Slides-for Open Section	Section
TAC-10	Receptacle Box in Splash	Each