

BLACK◆DIAMOND®

Project Name: _____

Location: _____

Item #: _____

Qty: _____

Black Diamond 48" Heavy Duty Gas Charbroiler, 8 Burners, in Stainless Steel

BDCTC-48

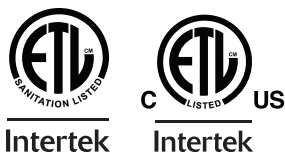


Elevate your culinary operations with this premium countertop Black Diamond Gas Charbroiler, designed for efficiency and reliability in commercial settings. Built from durable stainless steel and cast iron, it ensures longevity and performance. With an 8 burner capacity, each burner delivers 20,000 BTUs, excelling in high-demand environments. Manual ignition and control provide ease of use, while removable drip trays simplify cleaning, making it an essential tool for any professional kitchen.

FEATURES AND CONSTRUCTION

- Constructed from stainless steel and cast iron for durability
- Delivers a powerful 160,000 BTUs for high-performance cooking
- Features 8 burners for versatile cooking options
- Compact design ideal for small kitchens and food trucks
- Equipped with four 5-inch adjustable legs for stability
- Includes a 3/4-inch rear NPT gas inlet for natural gas
- Manual ignition and control type for precise cooking
- Delivers consistent cooking with a wide temperature range
- Easy-to-clean removable drip tray enhances maintenance
- Designed for commercial use in busy kitchen environments

3RD PARTY APPROVALS



WARRANTY (USA / CANADA)

Protected by Admiral Craft Equipment Corporation's one-year limited warranty.

Contact Admiral Craft Equipment
for details at 1-877-672-7740



INCLUDED COMPONENTS

- (4) Adjustable Legs
- (8) Gas Conversion Orifices
- (1) Relief Valve
- (2) Drip Trays

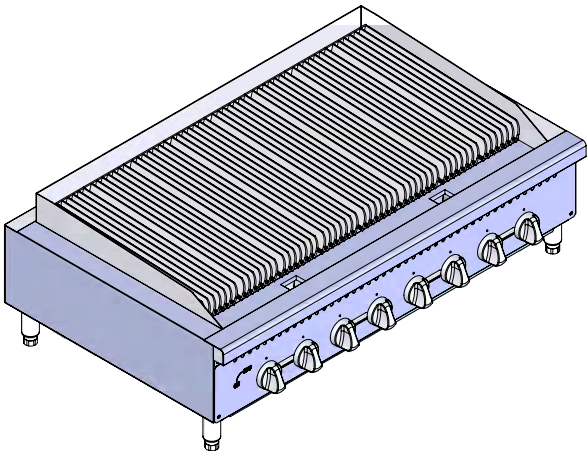
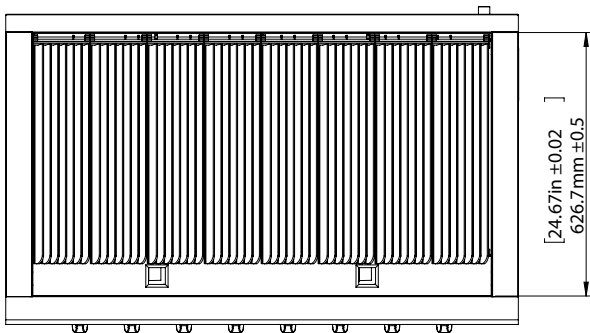
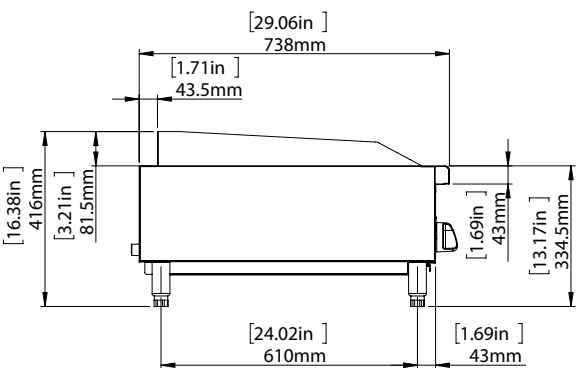
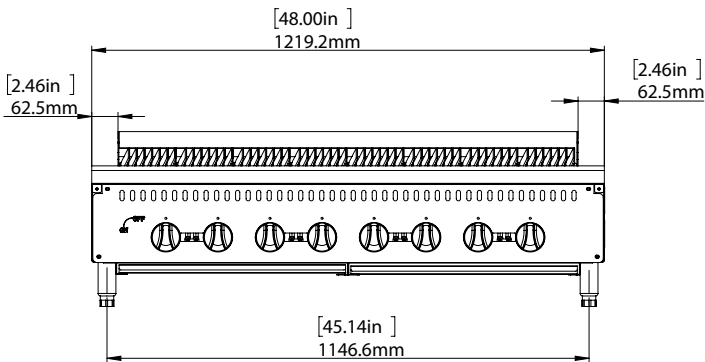
BLACK♦DIAMOND®

Black Diamond 48" Heavy Duty Gas Charbroiler

BDCTC-48

FRONT

SIDE



TOP

Gas

Ignition Type	Total BTU/hr	Total Number of Burners	Cooking Surface	Number of Drip Trays	Assembled Dimensions (in)	Item Weight (lbs)	Shipping Weight (lbs)
Manual	160000	8	Cast Iron	2	29.06" x 48.00" x 13.17"	351.7	427.8

ADDITIONAL INFORMATION

- Electricity not needed.
- Liquid Propane (LP) or Natural Gas (NG) units available. Field convertible from LP to NG and vice versa.
- Minimum supply pressure is 4" W.C. for natural gas and 10" W.C. for propane.
- Gas powered appliances must always be indoors, under an approved exhaust system with grease removal filters and a fire protection system.

Due to periodic changes in designs, methods, procedures, policies and regulations, the specifications contained in this document are subject to change without notice. While we exercise good faith efforts to provide information that is accurate, we are not responsible for errors or omissions in information provided or conclusions reached as a result of using the specifications. By using the information provided, the user assumes all risks in connection with such use.