

## Refrigeration Equipment 2-Drawer Refrigerator Under Counter 27" Long

ITEM # \_\_\_\_\_

MODEL # \_\_\_\_\_

NAME # \_\_\_\_\_

SIS # \_\_\_\_\_

AIA # \_\_\_\_\_



738290 (KCHUC27.2DR)

2-Drawer Refrigerator Under  
Counter 27" Long

### Short Form Specification

Item No. \_\_\_\_\_

2-drawer refrigerator counter top, 35.5 inches tall, with exterior back panel, exterior bottom panel, and exterior top panel in galvanized steel, exterior side panel in 430 stainless steel; interior back, top and bottom panels in 304 stainless steel. Fin & tube condenser to improve the performances in high temperature environments. Automatic Defrost Cooling System and temperature control. Vinyl heavy duty adjustable, easy to handle and clean shelves. External temperature display.

R600a gas in refrigeration circuit.  
ETL Safety and Sanitation certified.  
3/5 Years warranty.

### Main Features

- External temperature display.
- Removable gasket for easy cleaning operations.
- Fin & Tube Condenser improves performance in high temperature environments.
- Automatic Defrost Cooling System provides worry-free performance.
- Electronic Temperature Control, quick and simple to set, with control display for easy monitoring.
- Drawer slides support up to 152 lbs. static capacity.
- Cabinet completely insulated with high density polyurethane for low environmental impact.
- Back bottom mounted cooling unit guarantee an easy access and cleaning.
- Removable rubber bumper guards for airflow spacing and shock absorption

### Construction

- Stainless steel interior and exterior, durable and easy to clean for daily commercial use.
- White polystyrene interior side panels, for high impact resistance
- Pre-wired heavy duty power cord.
- Heavy duty drawer runners.
- Heavy duty casters.
- Magnetic gasket removable without tools for easy cleaning.
- Stainless steel worktop, durable functionality

### Sustainability

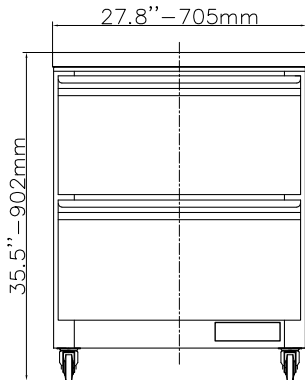
- CFC and HCFC free (ecological refrigerant type: R600a).
- High efficiency components to minimize the energy consumption still guaranteeing the highest performances.
- 60 mm insulation for energy saving.

### Optional Accessories

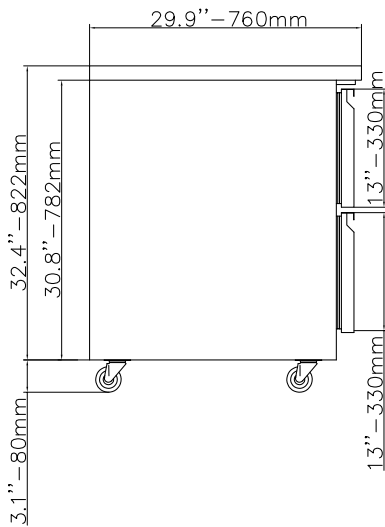
- 1 ADJUSTABLE FOOT PNC 206445

APPROVAL: \_\_\_\_\_

**Front**

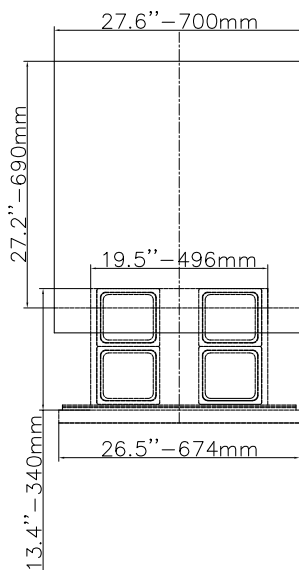


**Side**



EI = Electrical connection

**Top**



## Electric

Supply voltage:	115 V/1 ph/60 Hz
Electrical power, max:	0.16 kW
Plug type:	USA NEMA 5-15P

## Capacity:

Gross capacity:	6.5 cu.feet
-----------------	-------------

## Key Information:

Warranty:	3 / 5 years
Capacity:	6.50004 cu.ft.
External dimensions, Width:	27 3/4" (705 mm)
External dimensions, Depth:	29 15/16" (760 mm)
External dimensions, Height:	35 1/2" (902 mm)
Internal Dimensions (depth):	22 13/16" / (580 mm)
Internal Dimensions (height):	23 1/2" / (597 mm)
Internal Dimensions (width):	22 1/4" / (565 mm)
Shipping height:	38 3/16" (970 mm)
Shipping weight:	209 lbs (95 kg)
Shipping volume:	20.41 ft <sup>3</sup> (0.58 m <sup>3</sup> )
Type of external material:	Stainless Steel
Type of internal material:	Polystyrene
Approvals	ETL C&US;ETL SANITATION
N° of drawers:	2

## Refrigeration Data

Condenser type:	Fin & tube
Operating temperature min.:	32 °F
Compressor power:	1/10 hp
Operating temperature max.:	41 °F
Defrost type:	Auto Defrost

## Sustainability

Current consumption:	1.5 Amps
Refrigerant type:	R600a
GWP Index:	3
Refrigerant weight:	70 g



Refrigeration Equipment  
2-Drawer Refrigerator Under Counter 27" Long

The company reserves the right to make modifications to the products without prior notice. All information correct at time of printing.