



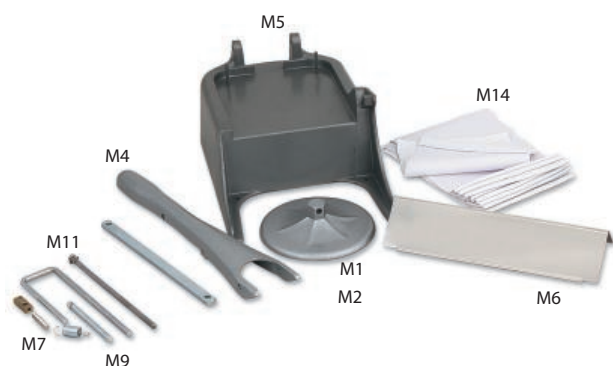
### TRIPLE STONE (SHARPENING STONE)

Furnished in a durable plastic case with three stones-coarse, medium, and fine. Ideal for all straight edge tools and its full size permits a full sweeping stroke. Stones are reversible and immersed in oil when not in use.

ITEM	IN	CM	PACK
963	19 1/2 x 5 1/2 x 4 1/2	49.5 x 14 x 11.4	1

### TRIPLE OILSTONE REPLACEMENT

ITEM	DESCRIPTION	IN	CM	PACK
1122F	Fine	11 1/2 x 2 1/2 x 1/2	29.2 x 6.4 x 1.3	1
1123M	Medium	11 1/2 x 2 1/2 x 1/2	29.2 x 6.4 x 1.3	1
1124C	Coarse	11 1/2 x 2 1/2 x 1/2	29.2 x 6.4 x 1.3	1



### PATTY MOLD MACHINE

Parts List for HM45 & HM69

ITEM	DESCRIPTION
M1	Mold Plate 6 to 9 Patties per lb (HM69)
M2	Mold Plate 4 to 5 Patties per lb (HM45)
M4	Handle
M5	Base
M6	Cloth Liner Bar
M7	Spring
M8	Mold Screw
M9	Hinge Pin
M10PHP	Paper Molding Pins
M11	Stripper Bar w/ Nut and Washer
M12	Set Screw
M13	Block
M14	Cloth Liners

### MAGNETIC KNIFE RACK

A quality import alternative that instantly grips and releases knives and utensils. Permanent magnetism, no moving parts.

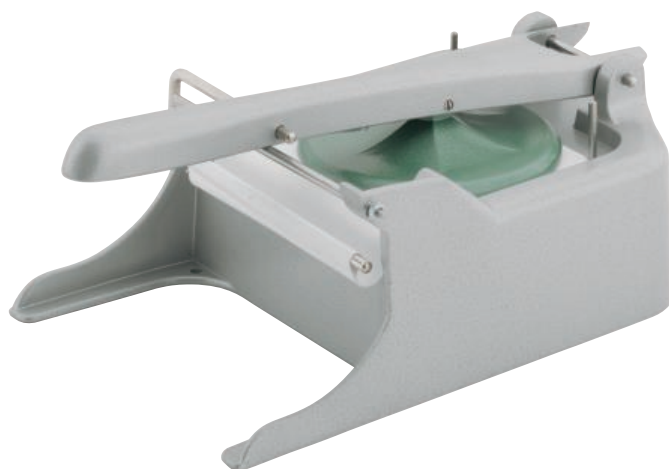
ITEM	IN	CM	PACK
MTH12	12	30.5	12
MTH18	18	45.7	12
MTH24	24	60.9	12



### KNIFE RACK

Stainless steel construction holds up to ten knives, two butcher steels, and two cleavers. Can be mounted to a wall, counter or table.

ITEM	IN	CM	PACK
AKP321	12 x 12 7/8 x 2 1/2	30.5 x 32.7 x 6.35	1



### PATTY MOLDING MACHINE

Forms and ejects wax-sheeted patty in one operation. The body is polished, die-cast aluminum. Holds up to 100 sheets and the mold and knockout discs are interchangeable.

ITEM	DESCRIPTION	IN	CM	PACK
HM45	4-5 Patties/lb	12 1/4 x 7 3/4 x 5 1/2	31.1 x 19.7 x 14	1
HM69	6-9 Patties/lb	12 1/4 x 7 3/4 x 5 1/2	31.1 x 19.7 x 14	1