

Merchandise Freezer

SWING DOOR FREEZER



Asber's merchandiser freezers are designed with both durability and aesthetics in mind, featuring a chip-resistant black vinyl exterior finish on the front and sides. This preferred finish for merchandisers offers superior longevity compared to painted surfaces, maintaining an attractive appearance even in high-traffic retail environments. The interior is crafted with NSF-approved white coated steel walls, enhancing product visibility and merchantability while ensuring easy cleaning. A sturdy stainless-steel floor completes the interior, providing a robust foundation that upholds the highest standards of safety and sanitation.

Thermal efficiency is a cornerstone of Asber's design philosophy, evident in their use of Ecomate™ insulation. This industry-leading insulation, known for its superior Global Warming Potential (GWP) and Ozone Depletion Potential (ODP) ratings, is applied at a 2-inch thickness to achieve the highest R-value efficiency. This ensures optimal temperature control and energy conservation across various retail environments.

In line with eco-friendly innovations, these merchandisers employ R-290 Hydrocarbon refrigerant. This advanced refrigerant meets the DOE's Energy Conservation standards while minimizing environmental impact with its low global warming contribution (ODP-0, GWP-3). This commitment to sustainability doesn't compromise performance, making these units an ideal choice for environmentally conscious businesses.

The merchandisers are equipped with LED interior lighting, providing shadow-free illumination that enhances product display. These LED lights offer up to 10 times longer lifespan compared to traditional fluorescent lighting, ensuring consistent, attractive product presentation while reducing maintenance needs.

Featuring triple-pane, hinged glass doors with argon gas insulation, these merchandisers offer enhanced energy efficiency. This specialized design prevents heat transfer, minimizes condensation, and provides a frost-free viewing environment, allowing for clear product visibility while maintaining optimal internal temperatures.

ADDITIONAL FEATURES TO INCLUDE

Doors lock with universal key.

Hermetic compressors with epoxy coated evaporator.

Automatic evaporator: paper fins not utilized in the evaporation process.

Electronic controller with digital display.

Temperature: 0 °F to -8 °F based on an external environment of 100 °F and 65% RH.

Standard with adjustable feet.



AFMD-23



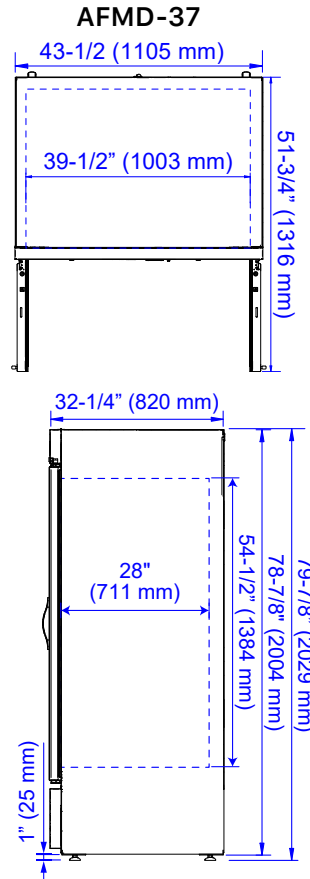
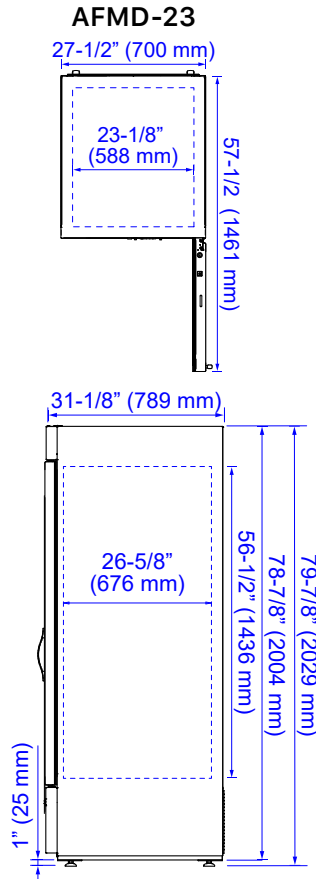
AFMD-37

MODEL	DOORS	SHELVES	CAPACITY	VOLTS - FREQUENCY	POWER	AMP	EXTERIOR DIMENSIONS (in)			SHIPPING	
			ft³		HP		Width	Depth	Height	Lbs	ft³
SWING DOOR FREEZER											
AFMD-23	1	4	23.0	115V. ~ 60 Hz.	1/2	5.0	27-1/2	31-1/8	79-7/8	293	56.5
AFMD-37	2	8	37.0	115V. ~ 60 Hz.	1	8.3	43-1/2	32-1/4	79-7/8	437	74.2

SPECIFICATIONS ARE SUBJECT TO CHANGE WITHOUT PRIOR NOTICE. | SPECIFICATIONS VALID ONLY FOR CONTINENTAL USA & CANADA.

Merchandise Freezer

SWING DOOR FREEZER



MODEL	AFMD-23		AFMD-37	
ELECTRICAL DATA				
Volts - Frequency	115V. - 60 Hz.			
Power (HP)	1/2	1		
Full Amp Load	5.0	8.3		
Plug Type	NEMA 5-15P			
Chord Length (ft)	7-7/8			
Refrigerant	R290			
INTERIOR DIMENSIONS (in)				
Width			39-1/2	
Depth	26-5/8	28		
Height	56-1/2	54-1/2		
Shelf (in)	23-5/8 x 22-1/2	24-1/4 x 24-1/4	27-3/8 x 24-1/4	
SHIPPING DIMENSIONS (in)				
Width	32	44-1/2		
Depth	36	33-1/8		
Height	80-1/2			



INSTALLATION REQUIREMENTS

- ELECTRICAL CONNECTION:** Units pre-wired at factory with chord and NEMA 5-15P plug set included for 115/60/1 phase.
- REFRIGERANT:** R290 is classified as A3 flammable refrigerant; risk of fire or explosion due to puncture of refrigerant tubing; follow handling instructions carefully.
- RESIDENTIAL APPLICATIONS DISCLAIMER:** Asber assumes no liability for parts or labor coverage for component failure, factory defect or any other damages for units installed in non-commercial foodservice or residential applications.

SPECIFICATIONS ARE SUBJECT TO CHANGE WITHOUT PRIOR NOTICE. | SPECIFICATIONS VALID ONLY FOR CONTINENTAL USA & CANADA.