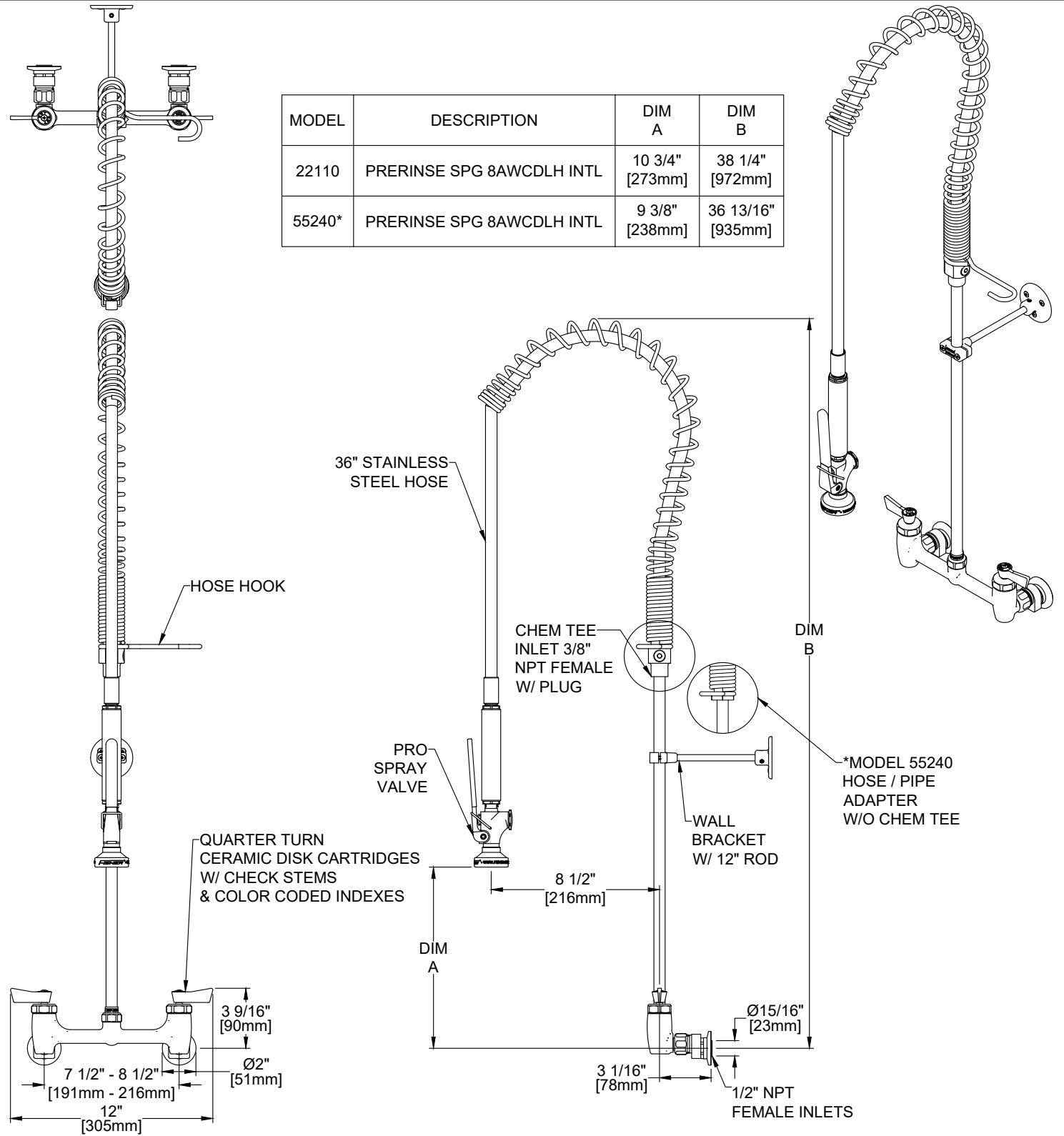


Customer/Wholesaler:	Date:	Job Name:	Model Specified:	Quantity:
Contractor:		Architect/Engineer:		



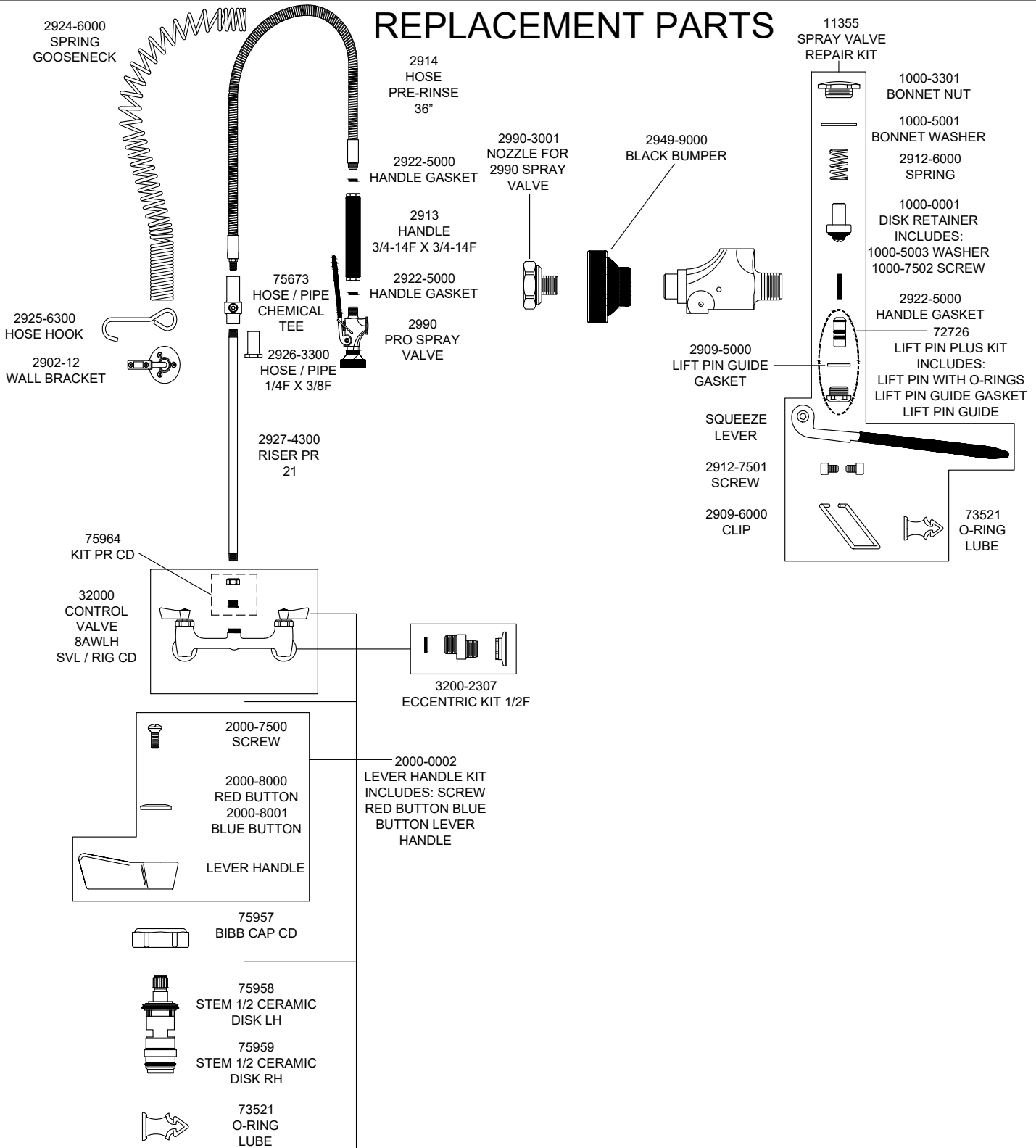
MODEL	DESCRIPTION	DIM A	DIM B
22110	PRERINSE SPG 8AWCDLH INTL	10 3/4" [273mm]	38 1/4" [972mm]
55240*	PRERINSE SPG 8AWCDLH INTL	9 3/8" [238mm]	36 13/16" [935mm]

PRODUCT SPECIFICATIONS: PRE-RINSE, 8" ADJUSTABLE WALL CONTROL VALVE, QUARTER TURN CERAMIC DISK CARTRIDGES W/ CHECK STEMS, LEVER HANDLES, 36" STAINLESS STEEL HOSE, 2.65 GPM @ 80 PSI SPRAY VALVE, 12" WALL BRACKET, 1/2" NPT FEMALE INLETS

PRODUCT COMPLIANCE: ASME A112.18.1 / CSA B125.1 NSF 61 - Section 9 NSF 372 (Low Lead Content)

Customer/Wholesaler:	Date:	Job Name:	Model Specified:	Quantity:
Contractor:		Architect/Engineer:		

REPLACEMENT PARTS



PRODUCT SPECIFICATIONS: PRE-RINSE, 8" ADJUSTABLE WALL CONTROL VALVE, QUARTER TURN CERAMIC DISK CARTRIDGES W/ CHECK STEMS, LEVER HANDLES, 36" STAINLESS STEEL HOSE, 2.65 GPM @ 80 PSI SPRAY VALVE, 12" WALL BRACKET, 1/2" NPT FEMALE INLETS

PRODUCT COMPLIANCE: ASME A112.18.1 / CSA B125.1 NSF 61 - Section 9 NSF 372 (Low Lead Content)