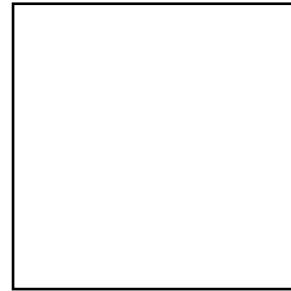




View Product

# 32" Square HPL Compact Top



Length: 32"  
Width: 32"  
Thickness: 10mm  
Unit Weight: 18.9 lbs

## Product Specifications

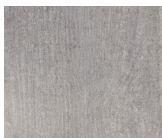
Product Description	Reference Number	Color	UPC Code 014306	Pack Weight Each (lbs.)	Master Pack	Master Pack Volume (cu. ft)
32" Square HPL Compact Top	UT320038	Granite	936499	22.58	1	1.04
	US32H790	Kandia Gray Marble	934488	22.58	1	1.04
	US32H722	Walnut	934525	22.58	1	1.04
	UT320727	Gray Slate	936536	22.58	1	1.04
	UT320245	Drifted Pine	936543	22.58	1	1.04

## Features & Benefits

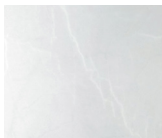
Warranty: 2 Yrs.

- Durable and impact resistant
- Water resistant – even when chipped!
- Easy to clean with soap and water – ideal for the foodservice environment
- Strong – the density of HPL is similar to the density of concrete
- 4 pre-installed rails to easily attach to base
- See tabletop to base easy guide for compatability

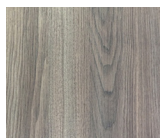
Grosfillex HPL Compact tabletops are perfect for fine dining, indoors or out! They provide the ultimate in strength and beauty along with their easy-to-clean finishes. They are available in attractive decors that feature a realistic “touch” effect. They are fitted with rails for easy installation on our bases, and pair beautifully with our X-One tilting



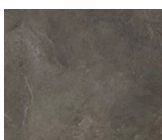
Granite



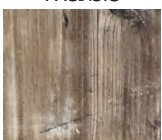
Kandia Gray  
Marble



Walnut



Gray Slate



Drifted Pine

