



The Signature of Quality®

FEDERAL INDUSTRIES

A Standex Company
215 Federal Avenue
Belleville, WI 53508-9201

Phone: 800-356-4206
Fax: 608-424-3234
Email: geninfo@federalind.com
Website: www.federalind.com

Project Name: _____

Item #: _____

Model #: _____ Qty: _____

Approval: _____

AIA#

SIS#

STRAIGHT GLASS HIGH VOLUME REFRIGERATED DELI CASE

Display more product and serve more customers with presentation and value in mind. Designed for continuous case line-ups without middle end glass.



SGR5948CD Shown

MODEL	DIMENSIONS (Includes End Panels)
<input type="checkbox"/> SGR3648CD	36.13 x 35.4 x 48 (in) 918 x 899 x 1219 (mm)
<input type="checkbox"/> SGR5048CD	50.13 x 35.4 x 48 (in) 1273 x 899 x 1219 (mm)
<input type="checkbox"/> SGR5948CD	59.13 x 35.4 x 48 (in) 1502 x 899 x 1219 (mm)
<input type="checkbox"/> SGR7748CD	77.13 x 35.4 x 48 (in) 1959 x 899 x 1219 (mm)

STANDARD FEATURES

Model Features

- Removable rear wrapping board.
- Tempered thermopane tilt-out front glass for easy cleaning. Front glass is sloped for high visual product displays.
- Tempered thermopane glass top, ends, and doors.
- Removable sliding rear doors, shelf light, shelf supports, and shelf.
- Steel base construction with a choice of six standard laminates on base. Other finishes optional.
- Removable, stainless steel display deck.
- Easily accessible light switch and adjustable temperature control.
- Average case temperature of 36° to 38° is maintained.
- Rear access of the refrigeration system for quick and easy service.
- Black trim.
- Designed for continuous line-ups.
- Adjustable Leg Levelers

Refrigeration

- Condenser air filter on self-contained units.
- Condensate evaporator provided for a totally self-contained system.
- Oversized coil and low-velocity fan system maintains

- high humidity and product freshness.
- Easy clean, rustproof insulated evaporator coil compartment.
- Thermometer.
- R290 Refrigerant

Shelving

- Adjustable full-length stainless steel lighted mezzanine shelf. Shelf is adjustable up and down and can also be tilted in three positions.

Lighting

- LED top light and shelf lights.

Agency Approvals

- UL Safety and UL Sanitation listed
- DOE 2017 Compliant

OPTIONAL ACCESSORIES

- | | |
|--|--|
| <input type="checkbox"/> Special Base Finish | <input type="checkbox"/> Legs |
| <input type="checkbox"/> Additional Mezzanine Shelf | <input type="checkbox"/> Top Cutting Board, White |
| <input type="checkbox"/> Remote Refrigeration (EEV Included) | <input type="checkbox"/> Package Shelf |
| <input type="checkbox"/> Reflective Ends | <input type="checkbox"/> Light Below Package Shelf |
| <input type="checkbox"/> White or Mirrored Interior Ends | <input type="checkbox"/> Front Glass and Rear Door Locks |
| <input type="checkbox"/> Reflective Rear Doors Casters/Cord & Plug Included (Self-Contained Models Only) | <input type="checkbox"/> Joining Kit for Continuous Line-ups |
| <input type="checkbox"/> Cord & Plug (Self-Contained Models Only) | <input type="checkbox"/> Scale Platform |
| | <input type="checkbox"/> Step Riser or Pan Holder |



WARRANTY*
One year Parts and Labor
2nd thru 5th year part
only service compressor
(U.S.A and Canada)

Note: Information is subject to change at any time.
Visit www.federalind.com for the most current specs.

AIA#

STRAIGHT GLASS HIGH VOLUME REFRIGERATED DELI CASE

SIS#

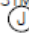
Product Specifications


Intended Environment: Type I - Designed to operate in maximum ambient conditions of 75°F (24°C) and 55% relative humidity unless noted otherwise in system information below.


Zone	Intended Product To Be Displayed	Avg Prod Temp °F/°C
All	Packaged Refrigerated Products	38°F / (3.3°C)

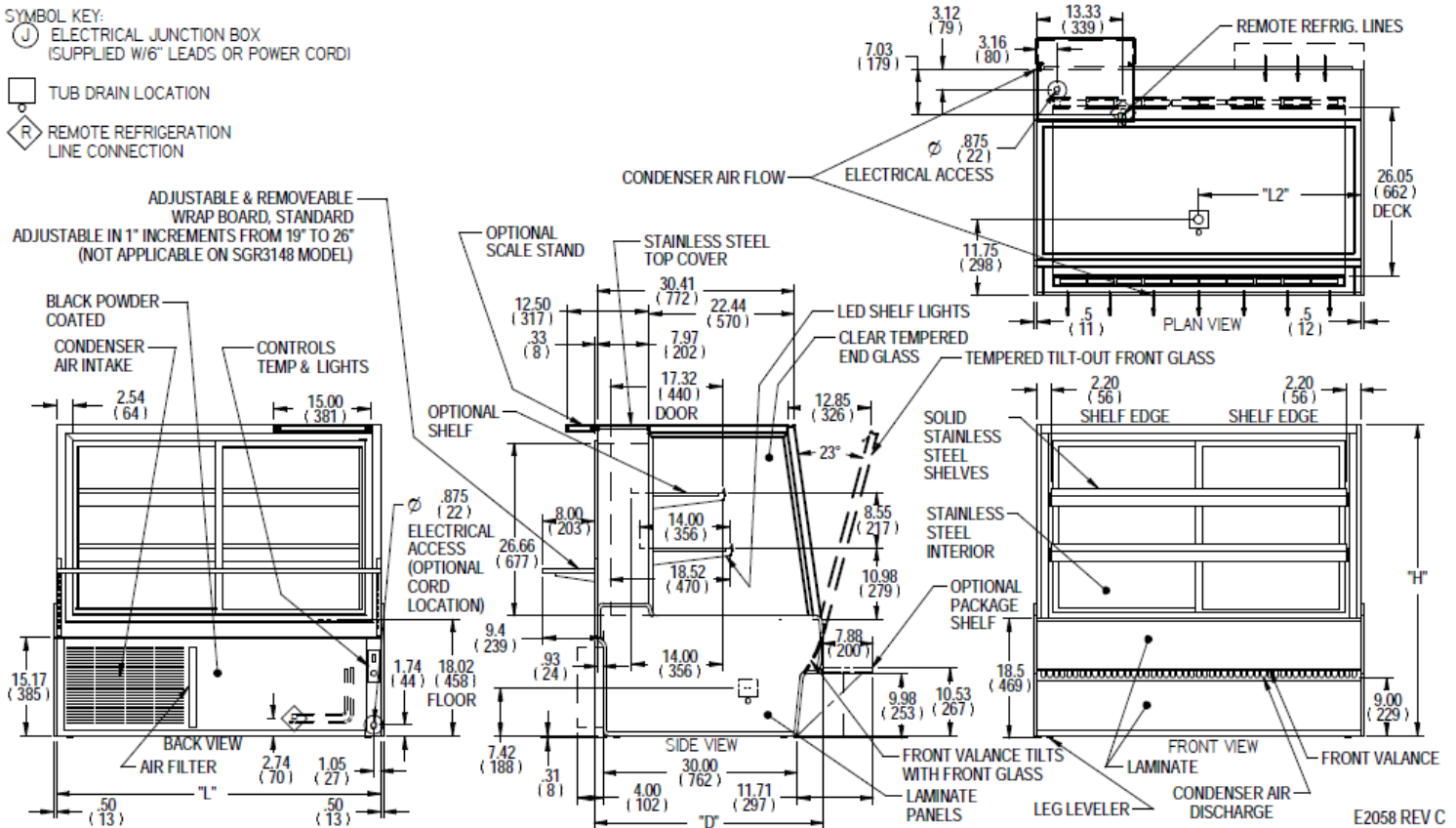
DIMENSION: xx"/(mm)

DIMENSION TOLERANCE +/- 0.25 (6.4)

SYMBOL KEY:
 ELECTRICAL JUNCTION BOX (SUPPLIED W/6" LEADS OR POWER CORD)

 TUB DRAIN LOCATION

 REMOTE REFRIGERATION LINE CONNECTION



MODEL	DIMENSION				TUB DRAIN	SHELVING			INTERIOR VOLUME CU FT	SELF CONTAINED				REMOTE										
	L	D	H	L2		# OF TIERS	D	L		PERMANENT CONNECT 2-WIRE + GROUND 120/60/1	REFRIGERANT	CONDENSATE REMOVAL	SHIP WEIGHT LBS	OPTIONAL NEMA CORD & PLUG 2-WIRE + 120/60/1	PERMANENT CONNECT 2-WIRE + GROUND 120/60/2		REFRIGERANT	CONDENSATE REMOVAL	BTU'S @+20°	SHIP WEIGHT LBS				
	in	in	in	in			in	in							in	AMPS					MAX FUSE SIZE	AMPS	MAX FUSE SIZE	KILO
	mm	mm	mm	mm			mm	mm							mm									
SGR3648CD	36.13	35.4	48	5.28	2	14	32.1	16.12	12.00	15A	R290	CONDENSATE PAN	495 LBS	NEMA 5-15P	3.00	15A	R449a	CONDENSATE PAN	3600	470 LBS				
	918	899	1219	134.11		356	815														224 KILO	213 KILO		
SGR5048CD	50.13	35.4	48	25.05	2	14	46.1	22.86	12.00	15A	R290	CONDENSATE PAN	640 LBS	NEMA 5-15P	3.00	15A	R449a	CONDENSATE PAN	4300	580 LBS				
	1273	899	1219	636.27		356	1171														290 KILO	263 KILO		
SGR5948CD	59.13	35.4	48	29.55	2	14	55.1	26.90	12.00	15A	R290	CONDENSATE PAN	765 LBS	NEMA 5-15P	4.00	15A	R449a	CONDENSATE PAN	4500	720 LBS				
	1502	899	1219	750.57		356	1400														347 KILO	327 KILO		
SGR7748CD	77.13	35.4	48	38.55	2	14	73.16	35.33	16.00	20A	R290	CONDENSATE PAN	930 LBS	NEMA 5-20P	5.00	15A	R449a	CONDENSATE PAN	6900	885 LBS				
	1959	899	1219	979.17		356	1858														422 KILO	401 KILO		

- If a GFCI circuit is required, a GFCI Breaker MUST be used instead of GFCI receptacle.
- Refrigerated cases are designed to operate in a maximum of 75°F (24°C) ambient and 55% relative humidity.
- Due to continuing engineering improvements, specifications are subject to change without notice.

DOE 2017
Energy Efficiency
Compliant



The Signature of Quality®

FEDERAL INDUSTRIES

A Standex Company

215 Federal Avenue Belleville, Wisconsin 53508-9201

Phone: 800-356-4206

Fax: 608-424-3234

Email: Geninfo@Federalind.com

Website: Federalind.com