

Fusion

GHSV 52"H Refrigerated Service Case

Structural Concepts®

DELIVERING FRESH. ALWAYS.™

- **GHSV452RLB** 51"L x 42-3/4"D x 51-3/4"H
- **GHSV552RLB** 62-7/8"L x 42-3/4"D x 51-3/4"H
- **GHSV652RLB** 75-3/8"L x 42-3/4"D x 51-3/4"H
- **GHSV852RLB** 99-3/4"L x 42-3/4"D x 51-3/4"H
- **GHSV1052RLB** 123-3/8"L x 42-3/4"D x 51-3/4"H
- **GHSV1252RLB** 148-1/2"L x 42-3/4"D x 51-3/4"H

Included

- Remote DX refrigeration
- LED top & shelf lights
- One year parts & labor warranty
- Stainless steel rear exterior
- Vertical swing out front glass
- Warmest average product temperature of 40°F or less



GHSV452RLB

Specify	Standard Features	Additional Options
EXTERIOR COLOR	<ul style="list-style-type: none"> Laminate (stock colors) 	<ul style="list-style-type: none"> Laminate (non-stock colors) Powder coated (stock/non-stock colors) Powder coated Silversan Black Stainless steel
INTERIOR COLOR	<ul style="list-style-type: none"> Powder coated Silversan Black 	<ul style="list-style-type: none"> Stainless steel
LOWER FRONT PANEL COLOR	<ul style="list-style-type: none"> Powder coated Silversan Black 	<ul style="list-style-type: none"> Powder coated (stock/non-stock colors) Stainless steel
BASE SUPPORT	<ul style="list-style-type: none"> Rail system for shims 	
BUMPER FRONT	<ul style="list-style-type: none"> 1" Boston bumper (specify color) 	<ul style="list-style-type: none"> 1" Stainless steel plate rail bumper
END PANELS	<ul style="list-style-type: none"> Full w/stainless steel mirror interior 	<ul style="list-style-type: none"> Cutaway w/glass None (specify per line-up)
SCALE STAND	<ul style="list-style-type: none"> None 	¹ <ul style="list-style-type: none"> Scale stand w/ receptacle & CAT5 (specify location) Scale stand w/ receptacle (specify location)
PRICE TAG MOLDING	<ul style="list-style-type: none"> None 	<ul style="list-style-type: none"> 1" Price tag molding (black or silver) Universal price tag molding (clear w/ open top)
REAR DOORS	<ul style="list-style-type: none"> Clear glass rear sliding doors 	<ul style="list-style-type: none"> Reflective glass rear sliding doors
SHELVING	<ul style="list-style-type: none"> 12" & 16" & 18" Solid shelving 	<ul style="list-style-type: none"> 12" & 16" & 18" Glass shelving
LIGHTS	<ul style="list-style-type: none"> LED 3500K w/ frosted lens 	<ul style="list-style-type: none"> LED 4000K w/ frosted lens
ELECTRICAL CONNECTION	<ul style="list-style-type: none"> Electrical leads (remote) 	
REFRIGERATION	¹ <ul style="list-style-type: none"> Remote DX refrigeration 	² <ul style="list-style-type: none"> Remote w/thermostat, solenoid & TXV
SENSOR	<ul style="list-style-type: none"> None 	<ul style="list-style-type: none"> CPC discharge air sensor (remote)
MISCELLANEOUS		<ul style="list-style-type: none"> Rear door lock
ACCESSORIES		<ul style="list-style-type: none"> Drain strainer

Std Notes: 1 - Read important notes for remote options

Option Notes: 1 - Separate circuit required
2 - Read important notes for remote options

Fusion

GHSV 52"H Refrigerated Service Case

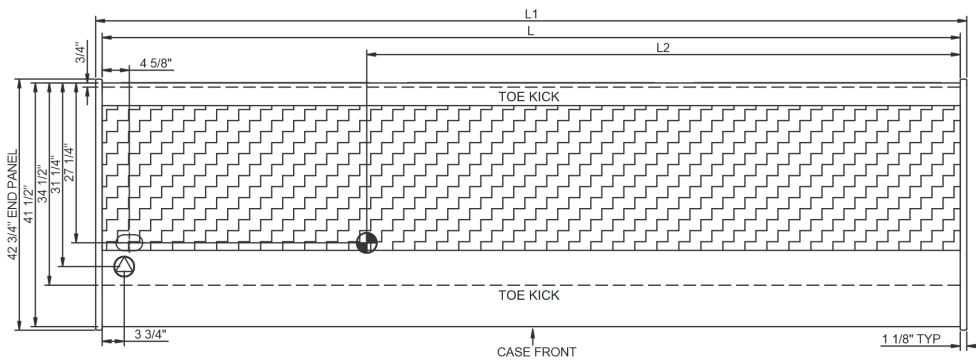
Structural Concepts®

DELIVERING FRESH. ALWAYS.™

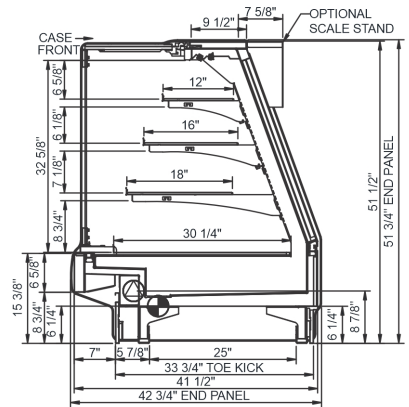
Intended Environment: Type I - Designed to operate in ambient conditions of 75°F with 55% relative humidity unless noted otherwise in system information below.

Zone	Intended Product To Be Displayed	Warmest Avg Prod Temp ° F
1	Unpackaged refrigerated products	40

PLAN VIEW



SIDE VIEW



NOTE: ALL DIMENSIONS APPROXIMATE

ELECTRICAL JUNCTION BOX (SUPPLIED WITH 6\"/>

REFRIGERATION LINE CONNECTION.
 REMOTE FLOOR SINK & UTILITIES ACCESS AREA.

SELF-CONTAINED CASE SERVICE ACCESS AREA.
 DRY CASE SERVICE ACCESS AREA.

Model Technical Specifications																
Model	L"	L1"	L2"	System Circuit Volts			Phs	Freq	Amps ***	Watts	Wires	NEMA Plug	SST	Conv. Rack BTU/H	Para. Rack BTU/H	Est Wt
GHSV452RLB	48.75	51.00	3.50	Remote (DX)	Circuit #1	110-120	1	60	1.84	61	2+G	Leads Multiple	20.00	1728	1600	1,100
GHSV552RLB	60.63	62.88	3.50	Remote (DX)	Circuit #1	110-120	1	60	1.92	78	2+G	Leads Single	24.00	2246	2080	1,050
GHSV652RLB	73.13	75.38	3.50	Remote (N/A)	Circuit #1	110-120	1	60	2.02	190	2+G	Leads Multiple	20.00	2614	2420	950
				Remote (R744 TRANSCRIT)	Circuit #1	110-120	1	60	2.02	190	2+G	Leads Multiple		2614	2420	
GHSV852RLB	97.50	99.75	3.50	Remote (DX)	Circuit #1	110-120	1	60	3.08	201	2+G	Leads Single	20.00	3283	3040	1,500
				Remote (R744 TRANSCRIT)	Circuit #1	110-120	1	60	3.08	201	2+G	Leads Multiple		3283	3040	
GHSV1052RLB	121.13	123.38	80.63	Remote (DX)	Circuit #1	110-120	1	60	3.84	157	2+G	Leads Single	20.00	4104	3800	1,450
GHSV1252RLB	146.25	148.50	101.13	Remote (DX)	Circuit #1	110-120	1	60	4.95	203	2+G	Leads Multiple	20.00	4882	4520	1,700

*** Does not include electric defrost on freezer models.

Regulatory Approvals:

All Models
 Accordance with AHRI Std 1200
 ETL Listed to UL 471
 ETL Listed to CAN/CSA 22.2 No. 120
 ETL Sanitation to NSF/ANSI 7

In Accordance with
AHRI Std 1200

DOE 2017
 Energy Efficiency
 Compliant

Important Notes:

- 1) REMOTE REFRIGERATION NOTE: Condensing unit not included, floor drain required.
- 2) ELECTRICAL NOTE: If GFCI is required, a GFCI breaker MUST be used in lieu of a GFCI receptacle.
- 3) 45" minimum door entry clearance required (without shipping skid).
- 4) Units must be shimmed during installation to ensure the unit is level and plumb.

⚠ WARNING: This product can expose you to chemicals, including Urethane (Ethyl Carbamate), which are known to the State of California to cause cancer and birth defects or other reproductive harm. For more information go to www.P65Warnings.ca.gov.