



PB-14-SS

NOTE: Faucet handles not included.

Project: _____	AIA# _____
Item #: _____ Qty: _____	SIS# _____
Model #: _____	

Pipe Bridge Tower

PB- _____ - _____

Size: Specify the number of faucets from 6, 8, 10, 12, 14, 16

Finish:
 SS = Grainline
 MF = Mirror

Standard Features

- 1/4" stainless steel shanks with 3/16" restriction lines
- All stainless steel faucets
- Surface mount, stainless steel drain pans with removable, perforated inserts
- Tower mounting hardware for tops up to 4" thick

Configurable Options

- 6, 8, 10, 12, 14 or 16 faucets
- Grainline or mirror finish
- Air cooled for direct-draw system or glycol cooled for recirculating system
- Rinser faucet centered on drain pan

Specifications

Materials

- Tower shell is 304 stainless steel; 0.065", 4" diameter
- Flange is 1/4", 304 stainless steel
- 20 gauge stainless steel drain pan and perforated inserts

Shank Sizes

- 1/4" I.D. with 3/16" fitting

Drains

- 1/2" tailpiece on drain pan

Rinser Faucet (optional)

- Accepts 3/8" cold water lead
- 30 psi water pressure regulator included
- 1.2 gallons per minute

Optional Rinser Faucet

Installation Notes

- Unit does not provide a 1" air gap
- Must be installed with external backflow prevention to meet applicable federal, state, and local plumbing code requirements.
- Install in-line water pressure regulator (included)
- A separate shut-off valve is recommended (not included)

NOTE: Rinser faucets are not intended for use with towers mounted to a refrigerator due to risk of water line freeze up.



Optional Rinser Faucet Extension

03012383
 Rinser Faucet Assembly



Intertek
 4004503
 Conforms to NSF/ANSI STD 372

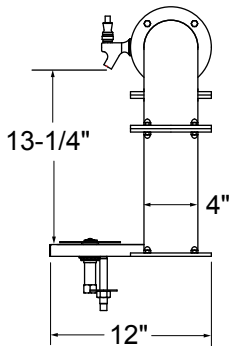
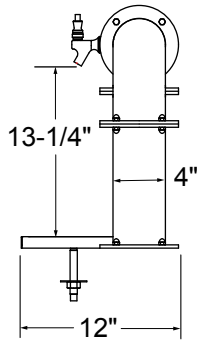
Cleaning & care instructions: <https://www.glastender.com/support/documents/manuals/general-cleaning-and-care-instructions-for-stainless-steel>

Glastender, Inc. • 5400 N Michigan Rd • Saginaw, MI • 48604-9780 989.752.4275 • 800.748.0423 • Fax 989.752.4444 www.glastender.com	Approval/Notes:
Specifications subject to change without notice. For current specifications please visit our website.	

Pipe Bridge Tower

Drawings

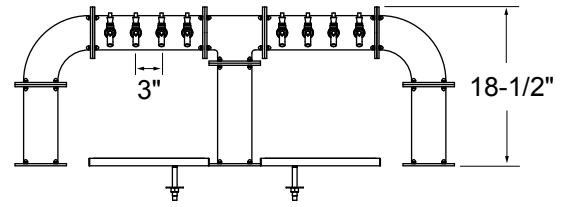
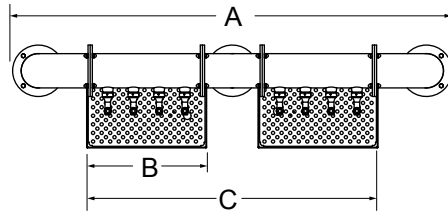
SIDE ELEVATIONS



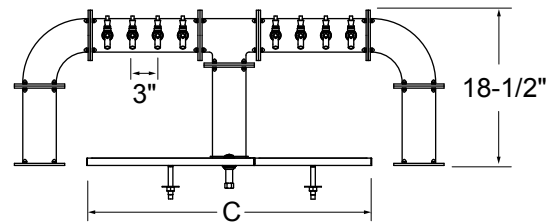
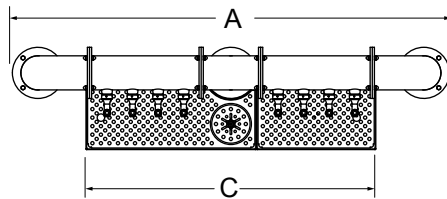
WITH RINSER FAUCET

PLAN VIEWS

NO RINSER FAUCET



WITH RINSER FAUCET



PIPE BRIDGE TOWER

FAUCETS	6	8	10	12	14	16
"A" WIDTH	45-1/4"	51-1/4"	57-1/4"	63-1/4"	69-1/4"	75-1/4"
"B" WIDTH	11"	14"	17"	20"	23"	26"
"C" WIDTH	28"	34"	40"	46"	52"	58"