



BEVERAGE-AIR®

PROJECT: _____
 ITEM # _____ QTY: _____
 MODEL # _____
 AIA # _____ SIS # _____
 APPROVED: _____

COUNTERTOP MERCHANDISER SERIES

Model: CT96HC-1-B

1 Year Parts/Labor Warranty



CABINET CONSTRUCTION

- Black textured steel exterior
- Interior white epoxy coated steel
- Full electronic temperature control with display
- Double pane, tempered glass door with locks
- Three (3) epoxy coated shelves: top 2 shelves are adjustable
- Unit standard with leveling legs which are 2" high, legs can be adjusted up to 1" for leveling of the freezer
- LED lighting
- System is serviceable from the rear



OPTIONS & ACCESSORIES

- Custom graphics
- Wire shelves

REFRIGERATION SYSTEM

- Refrigeration system uses R600a refrigerant to comply with all environmental concerns
- Automatic, non-electric defrost
- Epoxy coated evaporator coil
- Maintains product temperature between 36°F and 38°F

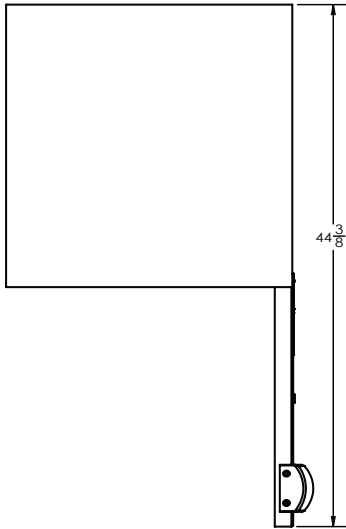


BEVERAGE-AIR®

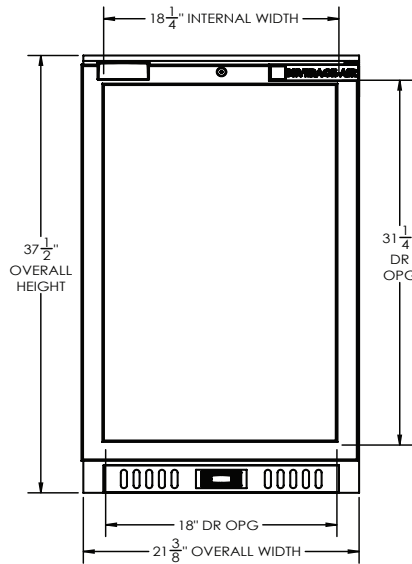
COUNTERTOP REFRIGERATOR

Model: CT96HC-1-B

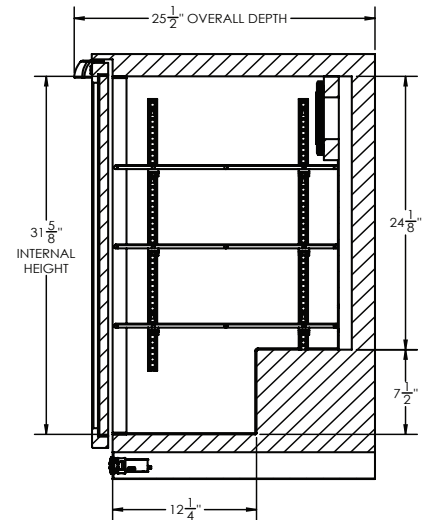
PLAN VIEW



ELEVATION VIEW



SIDE VIEW



EXTERNAL DIMENSIONAL DATA	
Width Overall (in)	21 3/8"
Depth Overall (in)	25 1/2"
Height Overall (in)	37 1/2"
Number of Doors	1
Depth with Door open 90° (in)	44 3/8"
Door Openings (in)	18" x 31 1/4"
INTERNAL DIMENSIONAL DATA	
NET Capacity (cubic ft.)	5.9
Internal Width Useable (in)	18 1/4"
Internal Depth Overall (in)	Upper 19 1/2" Lower 12 1/4"
Internal Height Overall (in)	31 5/8"
Internal Height Useable (in)	24 1/8"
Number of Shelves	3

ELECTRICAL DATA	
Full Load Amps	1.3
Voltage	115/60/1
Nema Plug (8' cord)	5-15P
REFRIGERATION DATA	
Horsepower	1/5
SHIPPING DATA	
Gross Weight - Crated	125 lbs.
Height - Crated (in)	45"
Width - Crated (in)	24"
Depth - Crated (in)	27"

ELECTRICAL CONNECTION



120/60/1
NEMA 5-15P

Unit pre-wired at factory
and include 8' long cord
and plug set.

We reserve the right to change specifications and product design without notice. Such revisions do not entitle the buyer to corresponding changes, improvements, additions or replacements for previously purchased equipment. Dimensional tolerances +/- 1/4". Metric dimensions (MM).

Required Clearance: Rear 3"

3779 Champion Blvd., Winston-Salem, NC 27105 | 888-845-9800 | Fax: 336-245-6453 | Beverage-Air.com | Sales@bevair.com

Date Issued 9/25 | Printed in U.S.A.