

# THE Q-BIK MOBILE BUFFET SYSTEM

WELCOME THE TRIO : SEAMLESSLY BLEND AND INTEGRATE

Q-BIK

THE  
HUB

ZOZZ  
MODULAR FLAT PACK



EASTERN  
TABLETOP



Corporate Headquarters, Showroom & Warehouse:  
Eastern Tabletop Manufacturing Company Inc.  
50 Ingham Avenue  
Bayonne NJ 07002

Telephone:  
1-718-240-9595

Toll Free:  
1-888-422-4142

Email:  
sales@easterntabletop.com

Visit [www.EasternTableTop.com](http://www.EasternTableTop.com) for full product details.

## THIS ISN'T JUST A BUFFET UPGRADE; IT'S AN INDUSTRY EYE-OPENER.

Get ready for a groundbreaking revelation in the industry – the sensational **Q-BIK!** Standing tall alongside the **THE HUB** and the **20ZZ**, it seamlessly integrates into our dynamic collapsible buffet family.

Envision the possibilities: interchangeable tiles effortlessly swapping between all three units, and stunning color panels creating a seamless blend with any decor.

### WE'RE PROUD TO INTRODUCE IO

- Integrating Operations
- Indoor and Outdoor
- Innovative Options

Brace yourself for a thrilling new era in buffet experience!

**Q-BIK CAPABILITIES ARE AS IMPRESSIVE  
AS THEY ARE EXTENSIVE.**

## INDOOR - OUTDOOR

The **Q-BIK** is the ultimate solution for both Indoor & Outdoor versatility

- Heavy-duty swivel casters, effortlessly glide from carpet to tile, seamless transitioning between indoor and outdoor spaces.
- Connecting adapter easily hooks onto Q-Bik stands, creating the perfect buffet setup for any event.



# FROM DISPLAY TO ACTION

The **Q-BIK** extends from a singular display to a full buffet in mere minutes

- A vast selection of panels to choose from
- Set up and collapse your buffet in any area



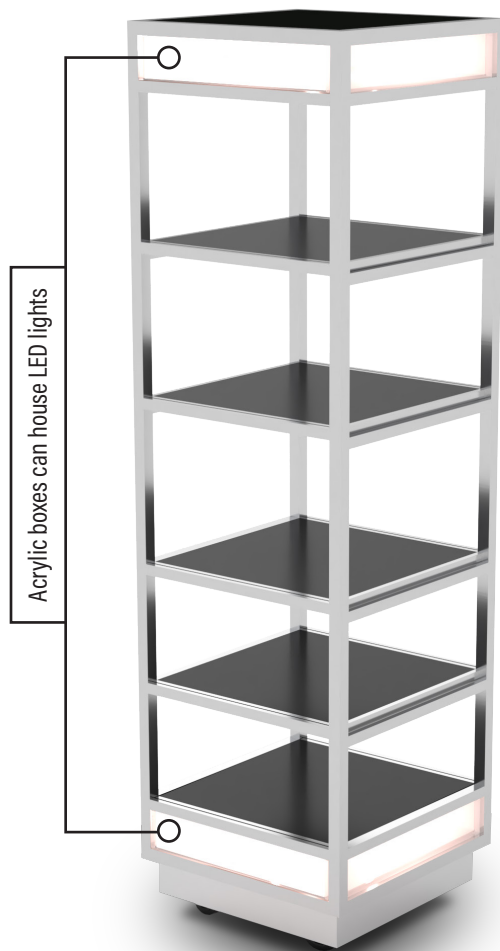


## RAISE THE BAR WITH EFFORTLESS ELEGANCE

Cheers to innovation, cheers to unforgettable moments! Our modular buffet table seamlessly transforms into a bar with a simple switch of panels and the addition of a bar top.

No hardware, no complicated installation - just pure sophistication at your fingertips with the **Q-BIK** display.

- Shelves hook onto multiple levels
- No hardware required



**Q-BIK**  
**5 TIER DISPLAY #ST1830G**  
22 1/4" x 22 1/4" x 80 3/8" H  
Glass Shelves #ST1830G  
Wooden Shelves #ST1830W  
○ 18/10 Stainless Steel  
○ Indoor/Outdoor Use



**Q-BIK**  
**4 TIER DISPLAY #ST1820G**  
22 1/4" x 22 1/4" x 69 3/8" H  
Glass Shelves #ST1820G  
Wooden Shelves #ST1820W  
○ 18/10 Stainless Steel  
○ Indoor/Outdoor Use

Heavy duty locking  
caster wheels

Stainless Steel Shelf Connector  
#ST1821  
63" x 21" D



Narrow Shelf Connector  
#ST1822BK  
63" x 10" D



## EMBRACE THE EASE OF MOBILITY AND ADAPTABILITY

**Q-BIK** is your go-to choice for a flawless buffet experience, regardless of the venue!

# FROM DYNAMIC CONFIGURATIONS TO LIMITLESS CREATIVITY

Transform your space with ease and style.  
Your vision, your display - **Q-BIK** makes it possible!

○ U-SHAPED



○ L-SHAPED



○ X-SHAPED



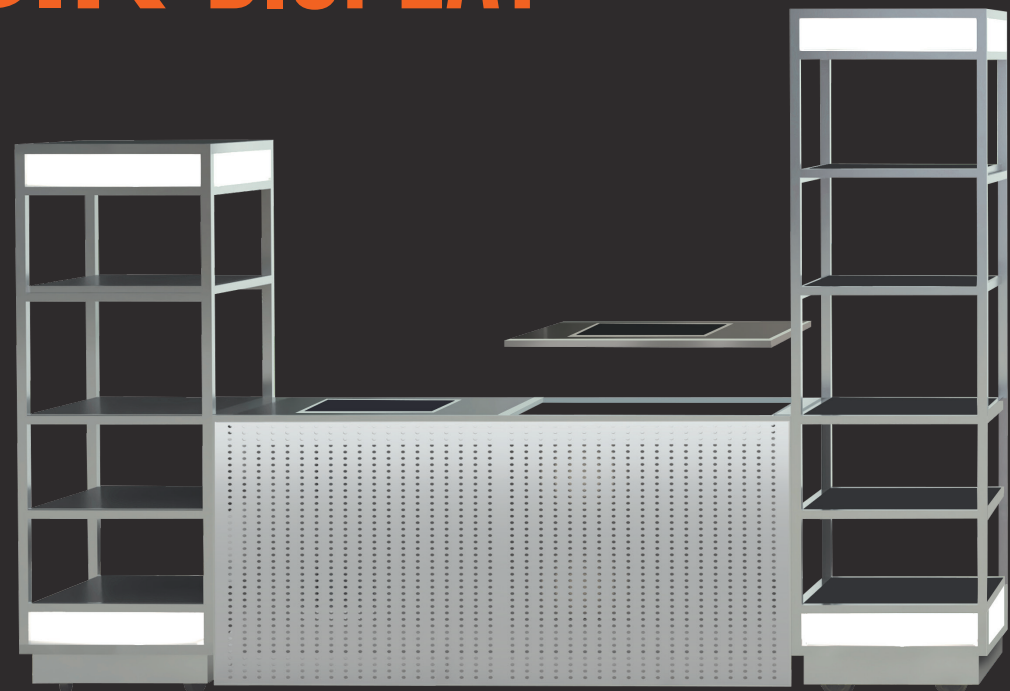


# SEAMLESS HARMONY, INFINITE VERSATILITY

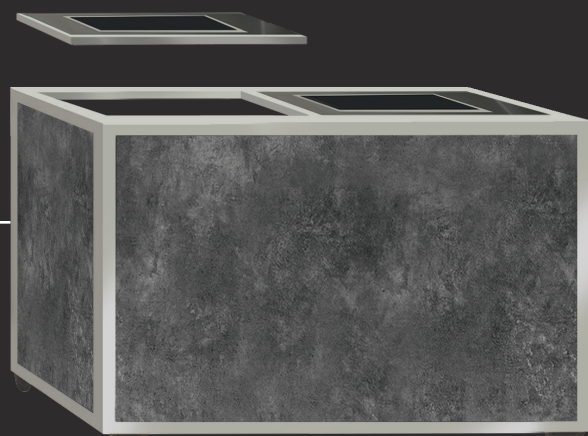
Experience total integration with the **Q-BIK**, **THE HUB**, & **Z0ZZ**  
as you easily swap tiles and redefine possibilities.

- Tiles used for both the HUB and Z0ZZ tables, also fit into the Q-Bik connector.
- No hardware required

# Q-BIK DISPLAY



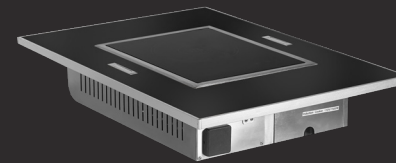
**2022**  
MODULAR FLAT PACK



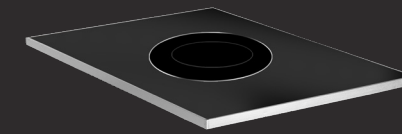
**THE  
HUB**

## TILES

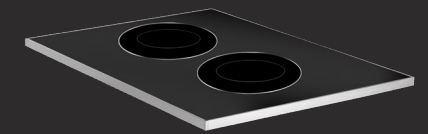
Complete selection of tiles available on [EasternTabletop.com](http://EasternTabletop.com)



INDUCTION TILE  
#ST5917BIND



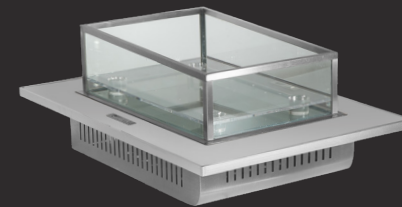
SINGLE  
WARMING INDUCTION  
#ST59801INDB



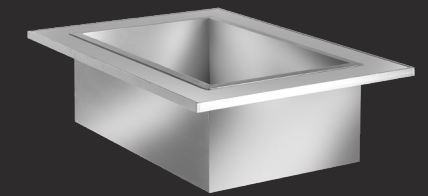
DOUBLE  
WARMING INDUCTION  
#ST59802INDB



OMELETTE INDUCTION  
#ST59380TB



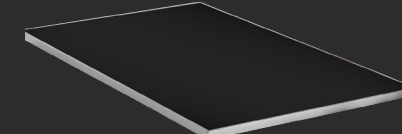
RAISED ICE BIN  
#ST5930BIB



DROP-IN ICE BIN  
#ST5925DIB



BUTCHER BLOCK  
#ST5933



TILE INSET  
#ST5935WPT



PLATE DISPENSER  
#ST5972PR

## FRONT & BACK PANELS

63" x 31 1/2" | Hooks onto **Q-BIK** stainless steel shelf connector



# EASTERN

TABLETOP



**Corporate Headquarters, Showroom & Warehouse:**

Eastern Tabletop Manufacturing Company Inc.  
50 Ingham Avenue  
Bayonne NJ 07002

**Telephone:**

1-718-240-9595

**Toll Free:**

1-888-422-4142

**Email:**

[sales@easterntabletop.com](mailto:sales@easterntabletop.com)

Visit [www.EasternTableTop.com](http://www.EasternTableTop.com) for full product details.



# EASTERN

TABLETOP