

L5HS3: ITEM PROFILE

5 PIECE SET



	weight	length	width	height	cubic feet	UPC	
L5HS3 5 Piece Set (see below)							
<i>item</i>	28.18 LB	14.94 L	14.25 W	7.81 H	0.962 FT ³	075536-38350-7	
<i>case</i>	28.18 LB	14.94 L	14.25 W	7.81 H	0.962 FT ³	1-00-75536-38350-4	1 PACK
HTS	7323.91.0000			Hi/Ti	5/6	N/A BASE	N/A RIM N/A HEIGHT

DESCRIPTION

QUICK DESCRIPTION

Seasoned Cast Iron 5 Piece Set with 10.5 Inch Griddle, 8 Inch Skillet, 10.25 Inch Skillet, 5 Quart (10.25 Inch) Dutch Oven and Cast Iron Cover that fits 10.25 Inch Skillet and 5 Quart Dutch Oven

DETAILED DESCRIPTION

The Lodge 5 piece set combines the most needed cast iron cookware for a complete kitchen. This set makes the perfect gift that will be cherished for decades.

MADE IN THE USA



click image for product specs



LODGE MANUFACTURING CO.

PO BOX 380
SOUTH PITTSBURG,
TENNESSEE 37380

423-837-7181
INFO@LODGE MFG.COM
ORDERS@LODGE MFG.COM

03/27/2017

ITEM DETAILS

FEATURES

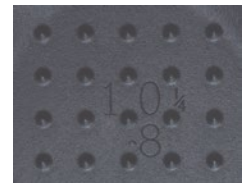
- Seasoned with oil for a natural, easy-release finish that improves with use
- Easy care: hand wash, dry, rub with cooking oil
- The right tools to sear, sauté, simmer, bake, broil, braise, roast, fry or grill
- At home in the oven, on the stove, on the grill or over the campfire
- Great for induction cooktops
- Brutally tough for decades of cooking
- Unparalleled in heat retention and even heating
- Cast iron cover features self-basting tips
- Iron cover fits the 10.25 inch skillet and Dutch Oven

NOTES:

Foundry seasoned cast iron. Full color carton, in English, Spanish and French, with use & care booklet.

AVAILABLE IMAGES

[Click here](#) for photos.



self-basting tips

[Click the tab for more info](#)

[General Category](#)

[Use & Care](#)

[Lodge History](#)