

# BLACK◆DIAMOND®

Project Name: \_\_\_\_\_

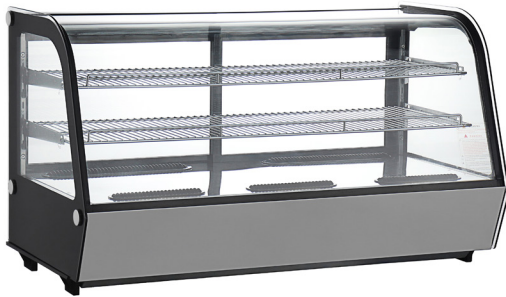
Location: \_\_\_\_\_

Item #: \_\_\_\_\_

Qty: \_\_\_\_\_

## Black Diamond Refrigerated Countertop Display Case, Two Glass Doors, 7 cu ft, in Stainless Steel

### BDRCTD-200



Black Diamond offers a commercial countertop refrigerated display case, perfect for bakeries, cafes, and delis. Its durable PVC glass doors ensure visibility, while the 7 cubic feet capacity accommodates a variety of items. Maintaining a temperature range of 32° to 53.6°F, it uses eco-friendly R290 refrigerant for efficient cooling. The digital control type ensures precise temperature settings, while its stainless steel construction guarantees longevity and ease of maintenance.

### FEATURES AND CONSTRUCTION

- Offers a 7 cu ft capacity, perfect for showcasing a variety of items
- Equipped with a 0.5 horsepower compressor for efficient cooling
- Constructed with durable stainless steel and PVC glass
- Maintains a temperature range of 32° to 53.6°F
- Utilizes eco-friendly R290 refrigerant, ensuring efficient and sustainable cooling
- Operates on 110-120V with a NEMA 5-15 plug type
- Includes two adjustable shelves for customizable storage
- Sliding glass doors allow easy access to contents
- Curved glass design provides maximum visibility from multiple angles
- Internal LED lighting illuminates products for an attractive display

### ELECTRIC

110-120V / 60Hz / 1Ph

Cord Length (Inches): 50"

Plug Type: NEMA 5-15P

Cord set included

NEMA 5-15P



### 3RD PARTY APPROVALS



Intertek



Intertek

### WARRANTY (USA / CANADA)

1 Year Warranty on Parts & Labor, 1 Year  
Warranty on Compressor

Contact Admiral Craft Equipment  
for details at 1-877-672-7740



### STORAGE CAPACITY

- Cubic Feet: 7 cu. ft.

### TEMPERATURE

- Holding Temperature (Fahrenheit): 32° - 53.6°

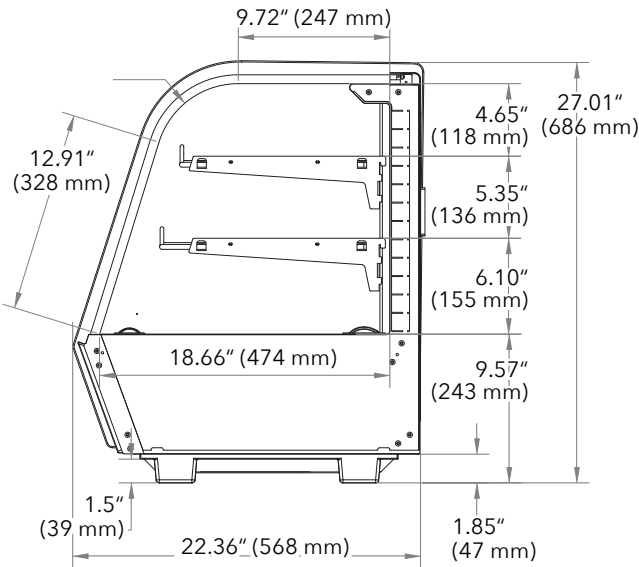
These models are designed to operate in an environment where temperature and humidity do not exceed 75°F (24°C) and 55% relative humidity

Black Diamond Refrigerated Countertop Display

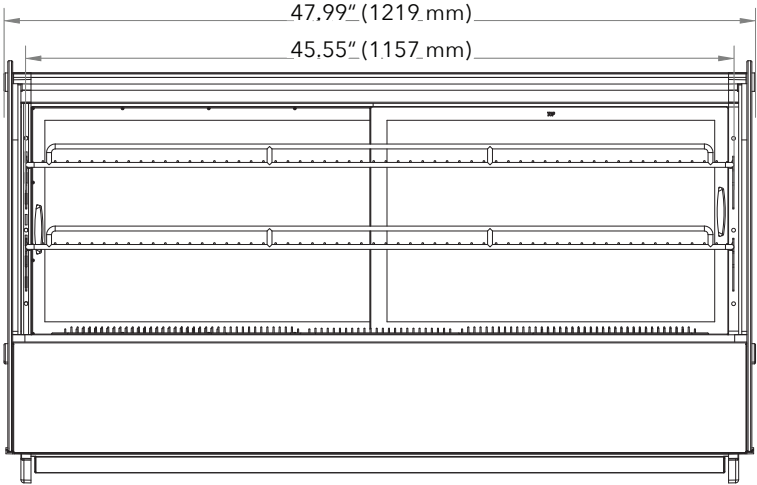
BLACK◆DIAMOND® Case, Two Glass Doors, 7 cu ft

BDRCTD-200

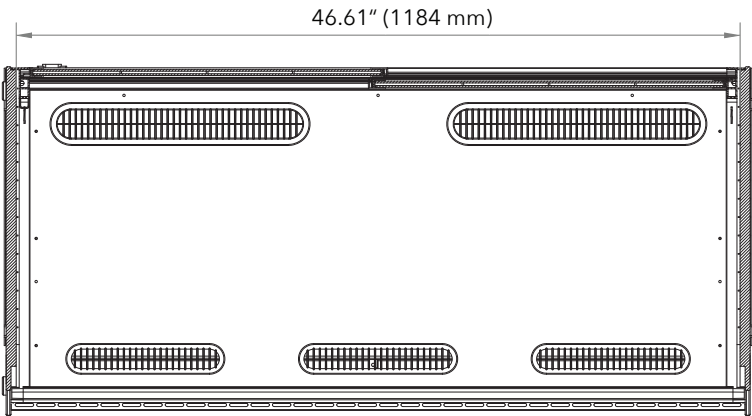
FRONT



SIDE



TOP



Countertop Display Case

Doors	Shelves	Amps	HP	Refrigerant	Capacity	Assembled Dimensions (in)	Item Weight (lbs)	Shipping Weight (lbs)
2	2	3.9A	1/2	R290 2.65 oz	7 cu. ft.	48" x 23.4" x 27"	195.0	204.0

Due to periodic changes in designs, methods, procedures, policies and regulations, the specifications contained in this document are subject to change without notice. While we exercise good faith efforts to provide information that is accurate, we are not responsible for errors or omissions in information provided or conclusions reached as a result of using the specifications. By using the information provided, the user assumes all risks in connection with such use.