



### Solid Plastic Shelving



### Vented Plastic Shelving

## STANDARD FEATURES & BENEFITS

- Antimicrobial Shelving System Consists of Durable Epoxy Coated Steel Sub-Frame with Polypropylene Plastic Removable Shelf Panels
- Antimicrobial Agent Protects the Shelf Finishes From Bacteria, Mold, Mildew and Fungi that Cause Odors, Stains, and Product Degeneration- Keeping Shelves Cleaner Between Cleanings\*
- Shelving Mounts to Standard Round Posts with 1" Incremental Adjustability. Posts Available In Grey Epoxy, and Stainless Finishes
- Fully Compatible with SPG's ISS Wire Shelving System and Accessories
- Lift-Off Sectional Shelf Panels Available in Solid or Vented Options. Shelf Panels can be Removed Easily for Cleaning and are Dishwasher Safe
- For Use in All Environments. Rated from 190°F (88°C) to -20°F (-29°C)
- No Hardware or Tools Required For Assembly
- Shelving Capacity up to 1,000 Lbs. (455 Kgs.) of Uniformly Distributed Static Weight Per Shelf

*\*This Product Does Not Protect Users or Others Against Bacteria, Viruses, Germs, or Other Disease Organisms. It is Only for the Protection of the Product. Antimicrobial Products Should Always be Thoroughly Cleaned After Each Use*

New Era® Plastic Shelving System		
Shelves Include: (1) Epoxy Coated Steel Sub Frame, Solid Polypropylene Plastic Removable Shelf Panels		
Solid Shelving		
Model No.	Size W x L x H-In. [mm]	Weight-Lbs. [kg]
LPS1830S	18 x 30 [457 x 762]	10 [4.5]
LPS1836S	18 x 36 [457 x 914]	12 [5.4]
LPS1848S	18 x 48 [457 x 1219]	16 [7.3]
LPS1860S	18 x 60 [457 x 1524]	20 [9.1]
LPS2130S	21 x 30 [533 x 762]	20 [9.1]
LPS2136S	21 x 36 [533 x 914]	13 [5.9]
LPS2148S	21 x 48 [533 x 1219]	17 [7.7]
LPS2160S	21 x 60 [533 x 1524]	21 [9.5]
LPS2430S	24 x 30 [610 x 762]	12 [5.4]
LPS2436S	24 x 36 [610 x 914]	14 [6.3]
LPS2448S	24 x 48 [610 x 1219]	18 [8.2]
LPS2460S	24 x 60 [610 x 1524]	23 [10.4]

New Era® Plastic Shelving System		
Shelves Include: (1) Epoxy Coated Steel Sub Frame, Vented Polypropylene Plastic Removable Shelf Panels		
Vented Shelving		
Model No.	Size W x L x H-In. [mm]	Weight-Lbs. [kg]
LPS1830V	18 x 30 [457 x 762]	10 [4.5]
LPS1836V	18 x 36 [457 x 914]	12 [5.4]
LPS1848V	18 x 48 [457 x 1219]	16 [7.3]
LPS1860V	18 x 60 [457 x 1524]	20 [9.1]
LPS2130V	21 x 30 [533 x 762]	20 [9.1]
LPS2136V	21 x 36 [533 x 914]	13 [5.9]
LPS2148V	21 x 48 [533 x 1219]	17 [7.7]
LPS2160V	21 x 60 [533 x 1524]	21 [9.5]
LPS2430V	24 x 30 [610 x 762]	12 [5.4]
LPS2436V	24 x 36 [610 x 914]	14 [6.3]
LPS2448V	24 x 48 [610 x 1219]	18 [8.2]
LPS2460V	24 x 60 [610 x 1524]	23 [10.4]

11 40 00 FOODSERVICE EQUIPMENT

ITEM NO. \_\_\_\_\_ QTY \_\_\_\_\_


MODEL NO. \_\_\_\_\_

PROJECT \_\_\_\_\_

OPTIONS \_\_\_\_\_

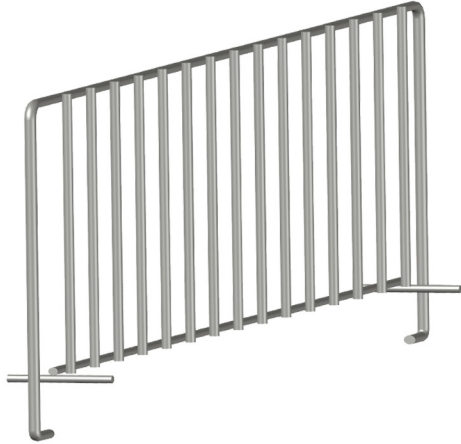
**Contact** 

 [WWW.SPGUSA.COM](http://WWW.SPGUSA.COM)  [info@spgusa.com](mailto:info@spgusa.com)

 877-503-4SPG (4774)

 SPG International, LLC | World Headquarters  
3340 Peachtree Rd, STE 1250 | Atlanta, GA 30326

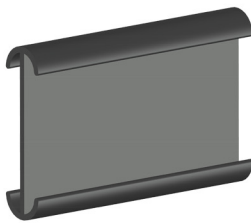
© Copyright SPG International, LLC 2024



### New Era® Shelf Dividers

Help separate and organize storage on New Era Shelves

Model No.	Size W x L x H-In. [mm]	Weight-Lbs. [kg]
LPSD18E	18" x 4-1/2" [457 x 114]	1.25 [.6]
LPSD21E	21" x 4-1/2" [533 x 114]	1.4 [.7]
LPSD24E	24" x 4-1/2" [610 x 114]	2.5 [1.1]



### New Era® Label Holder

Snap-On Label Holder for Paper Inserts. Label Slides in from the Side

Model No.	Length	Insert Size
LPBM3	2-3/4"	1-1/4" x 2-3/4"

### New Era® Plastic Shelving System Posts with Foot

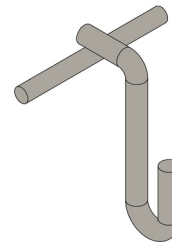
Stainless	GreyBond
P54S	P54E
P62S	P62E
P74S	P74E
P86S	P86E

### Posts for Casters

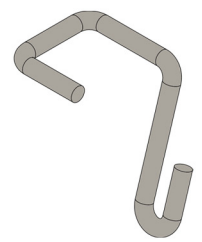
Stainless	GreyBond
P54NS	P54NE
P62NS	P62NE
P74NS	P74NE
P86NS	P86NE

### CASTERS 5-Inch

Resilient Rubber	Polyurethane	Resilient
CM5M	CM5P	CM5MC
CM5MB (w/ Brake)	CM5PB (w/ Brake)	CM5MCB (w/ Brake)



LPS90E



LPS180E

### New Era® Shelf Hooks

Use two Shelf Hooks per Shelf for a Continual Run or in Corners to eliminate Posts

Model No.	Application	Finish
LPS90E	Corner Turn	EPOXY COATED
LPS180E	Continual Run	EPOXY COATED

11 40 00 FOODSERVICE EQUIPMENT

ITEM NO. \_\_\_\_\_ QTY \_\_\_\_\_


MODEL NO. \_\_\_\_\_

PROJECT \_\_\_\_\_

OPTIONS \_\_\_\_\_

### Contact

 [WWW.SPGUSA.COM](http://WWW.SPGUSA.COM)  [info@spgusa.com](mailto:info@spgusa.com)

 877-503-4SPG (4774)

 SPG International, LLC | World Headquarters  
3340 Peachtree Rd, STE 1250 | Atlanta, GA 30326

© Copyright SPG International, LLC 2024