

Fusion

GCDT Cold Over Cold Combination Case

Structural Concepts®

DELIVERING FRESH. ALWAYS.™

- **GCDT456RLB** 51"L x 52-1/4"D x 56-3/8"H
- **GCDT656RLB** 75-3/8"L x 52-1/4"D x 56-3/8"H
- **GCDT856RLB** 99-3/4"L x 52-1/4"D x 56-3/8"H
- **GCDT1256RLB** 148-1/2"L x 52-1/4"D x 56-3/8"H

Included

- Remote DX refrigeration
- 16" Self-service shelving
- LED top & shelf lights
- Lift-up front glass
- One year parts & labor warranty
- Stainless steel rear exterior
- Warmest average product temperature of 40°F or less



GCDT856RLB

Specify	Standard Features	Additional Options
EXTERIOR COLOR	• Laminate (stock colors)	• Laminate (non-stock colors) • Powder coated (stock/non-stock colors) • Powder coated Silversan Black • Stainless steel
INTERIOR COLOR	• Powder coated Silversan Black	• Stainless steel
LOWER FRONT PANEL COLOR	• Powder coated Silversan Black	• Powder coated (stock/non-stock colors) • Stainless steel
BASE SUPPORT	• Rail system for shims (remote)	
BUMPER FRONT	• 1" Boston bumper (specify color)	• 1" Stainless steel plate rail bumper
END PANELS	• Full w/stainless steel mirror interior	• Cutaway w/ glass • None (specify per line-up)
FRONT GLASS	• Curved	• Flat angled
REAR STORAGE	• Non-refrigerated rear storage w/ sliding doors (stainless steel)	• Refrigerated rear storage w/ sliding doors (stainless steel)
SCALE STAND	• None	• Scale stand w/ receptacle & CAT5 (specify location) • Scale stand w/ receptacle (specify location)
PRICE TAG MOLDING	• None	• 1" Price tag molding (black or silver)
REAR DOORS	• Clear glass rear sliding doors	• Reflective glass rear sliding doors
SELF-SERVICE DISPLAY	• 16" Solid shelf	
SERVICE DISPLAY	• None	• 4"H Full depth display risers (n/a w/shelf) • Angled display steps (n/a w/shelf) • Solid shelf, lighted (LED)
LIGHTS	• LED 4000K w/ frosted lens	
NOSE LIGHTS	• None	• Self-service and/or Service nose light
ELECTRICAL CONNECTION	• Electrical leads (remote)	
REFRIGERATION	• Remote DX refrigeration	• Remote w/thermostat, solenoid & TXV
SENSOR	• None	• CPC discharge air sensor (remote)
MISCELLANEOUS		• Second year parts & labor warranty
ACCESSORIES		• Drain strainer • Rear wrapping board, white Sanalite®

Fusion

GCDT Cold Over Cold Combination Case

Structural Concepts®

DELIVERING FRESH. ALWAYS.™

Intended Environment: Type I - Designed to operate in ambient conditions of 75°F with 55% relative humidity unless noted otherwise in system information below.

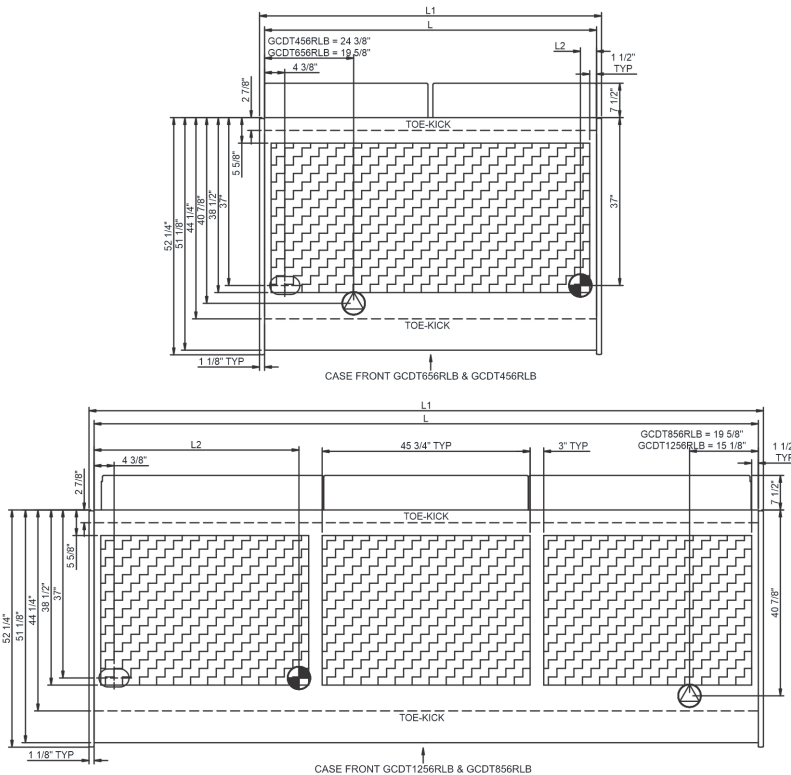
Zone **Intended Product To Be Displayed**

Warmest Avg Prod Temp ° F

1 Packaged / unpackaged refrigerated products-Prechilled to Warmest Avg Prod Temp.

38-40

PLAN VIEW



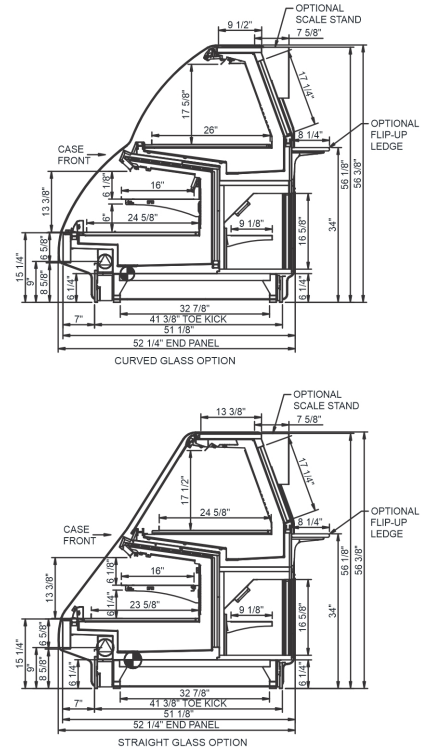
NOTE: ALL DIMENSIONS APPROXIMATE

ELECTRICAL JUNCTION BOX (SUPPLIED WITH 6\"/>

REFRIGERATION LINE CONNECTION.
 REMOTE FLOOR SINK & UTILITIES ACCESS AREA.

SELF-CONTAINED CASE SERVICE ACCESS AREA.
 DRY CASE SERVICE ACCESS AREA.

SIDE VIEW



Model Technical Specifications

Model	L"	L1"	L2"	System Circuit Volts			Phs	Freq	Amps ***	Watts	Wires	NEMA Plug	SST	Conv. Rack BTU/H	Para. Rack BTU/H	Est Wt
GCDT456RLB	48.75	51.00	3.50	Remote Blower (DX)	Circuit #1	110-120	1	60	2.46	228	2+G	Leads Multiple	20.00	3607	3340	1,200
				Remote Blower (GLYCOL 3)	Circuit #1	110-120	1	60	2.46	228	2+G	Leads Multiple	20.00	3607	3340	
GCDT656RLB	73.13	75.38	3.50	Remote Blower (DX)	Circuit #1	110-120	1	60	3.95	423	2+G	Leads Multiple	20.00	5378	4980	1,400
				Remote Blower (GLYCOL 3)	Circuit #1	110-120	1	60	3.95	423	2+G	Leads Multiple	20.00	5378	4980	
				Remote Gravity (DX)	Circuit #1	110-120	1	60	3.68	393	2+G	Leads Multiple	20.00	1512	1400	
GCDT856RLB	97.50	99.75	3.50	Remote Blower (DX)	Circuit #1	110-120	1	60	5.41	576	2+G	Leads Multiple	20.00	7258	6720	1,500
				Remote Gravity (DX)	Circuit #1	110-120	1	60	4.18	452	2+G	Leads Multiple	20.00	2074	1920	
GCDT1256RLB	146.25	148.50	45.13	Remote Blower (DX)	Circuit #1	110-120	1	60	5.92	675	2+G	Leads Multiple	20.00	10714	9920	1,800
				Remote Gravity (DX)	Circuit #1	110-120	1	60	5.22	615	2+G	Leads Multiple	20.00	3024	2800	

*** Does not include electric defrost on freezer models.

Regulatory Approvals:

All Models
 Accordance with AHRI Std 1200
 ETL Listed to UL 471
 ETL Listed to CAN/CSA 22.2 No. 120
 ETL Sanitation to NSF/ANSI 7



In Accordance with
AHRI Std 1200

DOE 2017
 Energy Efficiency
 Compliant

Important Notes:

- 1) REMOTE REFRIGERATION NOTE: Condensing unit not included, floor drain required.
- 2) Units must be shimmed during installation to ensure the unit is level and plumb.
- 3) Remote only available w/rail base w/shims.

⚠ WARNING: This product can expose you to chemicals, including Urethane (Ethyl Carbamate), which are known to the State of California to cause cancer and birth defects or other reproductive harm. For more information go to www.P65Warnings.ca.gov.