



## Identification Sheet

CCSE12A and CCSE12 Contact Clamshell  
Non-Stick Sheet Size

### CONTACT CLAMSHELL DIFFERENCES

#### HISTORY

THE LANG CONTACT CLAMSHELL HAS BEEN RELEASED IN THREE STAGES.

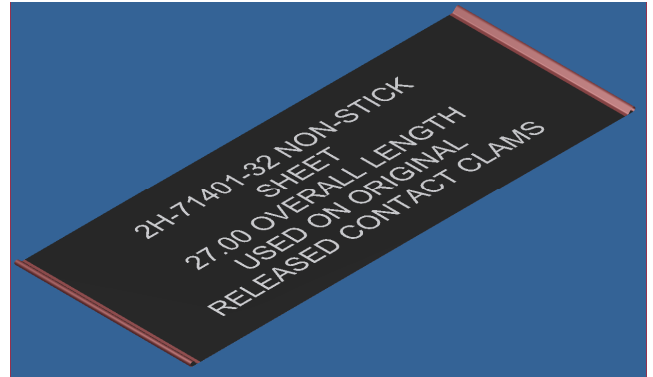
- i. The first model [CCSE12A] was released into production in December of 2013. This model does not feature self-leveling. The height of this version had to be specified when ordered and preset at the factory. This model had no side arms and had a handle attached to the top housing.
- ii. The second model [CCSE12] was released into production in January 2016. This is the original self-leveling design. This model has side arms and the handle is attached to the arms.
- iii. The third model [CCSE12] was released into production in September 2016. This is the current, self-leveling design. This model has side arms and the handle is attached to the arms. This also has new hardware to attach the PTFE sheet using new slide-on clips.

#### NON-STICK SHEETS

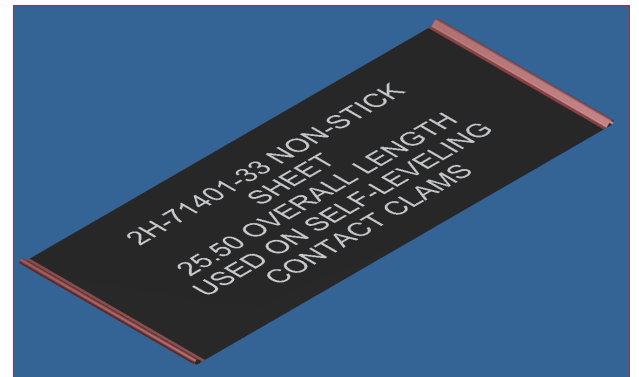
THE THREE UNITS USE DIFFERENT SIZE NON-STICK SHEETS

- i. The first model [CCSE12A] does not come with a non-stick sheet installed. For initial application, a sheet kit [CCSE12A-TEF] must be ordered as this kit includes rods and brackets necessary for installation. This model uses a sheet that is 27 inches deep. The part number for these sheets is *2H-71401-32* [single] or *CCSE12A-10NS* [pack of 10].
- ii. The second model [CCSE12] has a non-stick sheet installed when shipped. This model uses a sheet that is 25.5 inches deep. The part number for these sheets is *2H-71401-33* [single] or *CCSE12-10NS* [pack of 10].
- iii. The third model [CCSE12] has a non-stick sheet installed when shipped. This model uses a sheet that wraps around the front, back, left, and right of the clam. It utilizes a rod through a loop made in the back and slide-onclips along the other sides. The part number for these sheets is *2H-71401-34* [single] or *CCSE12C-10NS* [pack of 10].

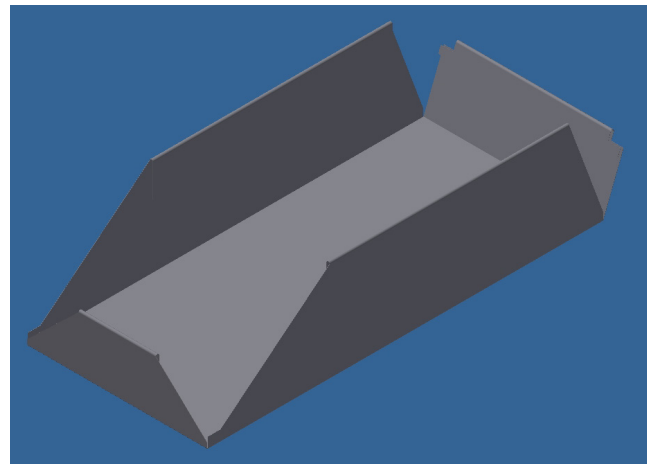
2H-71401-32



2H-71401-33



2H-71401-34



**LANG MANUFACTURING** • [www.langworld.com](http://www.langworld.com)

10 Sunnen Drive • Saint Louis, Missouri 63143

Telephone 314 678 6315 • Fax 314 781 3636

Printed in the U.S.A. • 2M-Z21369 • Rev A • 09.2016  
Please refer to the owner's manual for information  
regarding installation or use.



## Identification Sheet

CCSE12A and CCSE12 Contact Clamshell  
Non-Stick Sheet Size

MODEL	CCSE12A [FIRST MODEL]	CCSE12 [SECOND MODEL]	CCSE12C [THIRD MODEL]
Production Start Date	December 2013	January 2016	September 2016
Model Numbers	CCSE12A1-208 (or -240) CCSE12A2-208 (or -240) CCSE12A3-208 (or -240) CCSE12A4-208 (or -240) CCSE12A5-208 (or -240) CCSE12A6-208 (or -240)	CCSE121-208 CCSE122-208 CCSE123-208 CCSE124-208 CCSE125-208 CCSE126-208	CCSE121-208 CCSE122-208 CCSE123-208 CCSE124-208 CCSE125-208 CCSE126-208
Non-Stick Sheet Length	27 in. (68.6 cm)	25.5 in. (64.8 cm)	33.4 in. (84.8 cm)
Non-Stick Sheet Part Number (Single)	2H-71401-32	2H-71401-33	2H-71401-34
Non-Stick Sheet Part Number (Pack of 10)	CCSE12A-10NS	CCSE12-10NS	CCSE12C-10NS



**LANG MANUFACTURING** • [www.langworld.com](http://www.langworld.com)  
10 Sunnen Drive • Saint Louis, Missouri 63143  
Telephone 314 678 6315 • Fax 314 781 3636

Printed in the U.S.A. • 2M-Z21369 • Rev A • 09.2016  
Please refer to the owner's manual for information  
regarding installation or use.