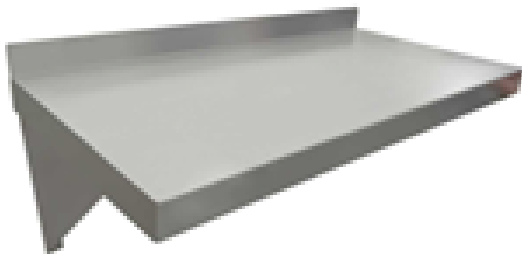




STAINLESS STEEL SOLID WALL SHELVES

Stainless Steel Wall Shelving

- **Space Saver:** Mount this wall shelving and utilize unused wall space and save valuable counter space.
- **Corrosion Resistant:** Type 304 Stainless Steel in 18 gauge provides high resistance to corrosion.
- **Easy to Install:** Nut and bolt assembly & comes with instructions.
- **Strong:** Rated load capacity of 300lbs.
- **Knock Down Design :** Save on freight with knocked down packaging design.



WALL SHELVING



MICROWAVE WALL SHELVING



Part Number	Description
CWS1224SS	SS Fabricated Wall Shelf 12" x 24" (2 Supports)
CWS1236SS	SS Fabricated Wall Shelf 12" x 36" (2 Supports)
CWS1248SS	SS Fabricated Wall Shelf 12" x 48" (2 Supports)
CWS1260SS	SS Fabricated Wall Shelf 12" x 60" (3 Supports)
CWS1272SS	SS Fabricated Wall Shelf 12" x 72" (3 Supports)
CWS1524SS	SS Fabricated Wall Shelf 15" x 24" (2 Supports)
CWS1536SS	SS Fabricated Wall Shelf 15" x 36" (2 Supports)
CWS1548SS	SS Fabricated Wall Shelf 15" x 48" (2 Supports)
CWS1560SS	SS Fabricated Wall Shelf 15" x 60" (3 Supports)
CWS1572SS	SS Fabricated Wall Shelf 15" x 72" (3 Supports)
CMS1824SS	SS Fabricated Microwave Shelf 18" x 24"
CMS2424SS	SS Fabricated Microwave Shelf 24" x 24"



Information and specifications are subject to change without notice. Please confirm at time of order.

Copyright © 2020 Centaur Storage Company