

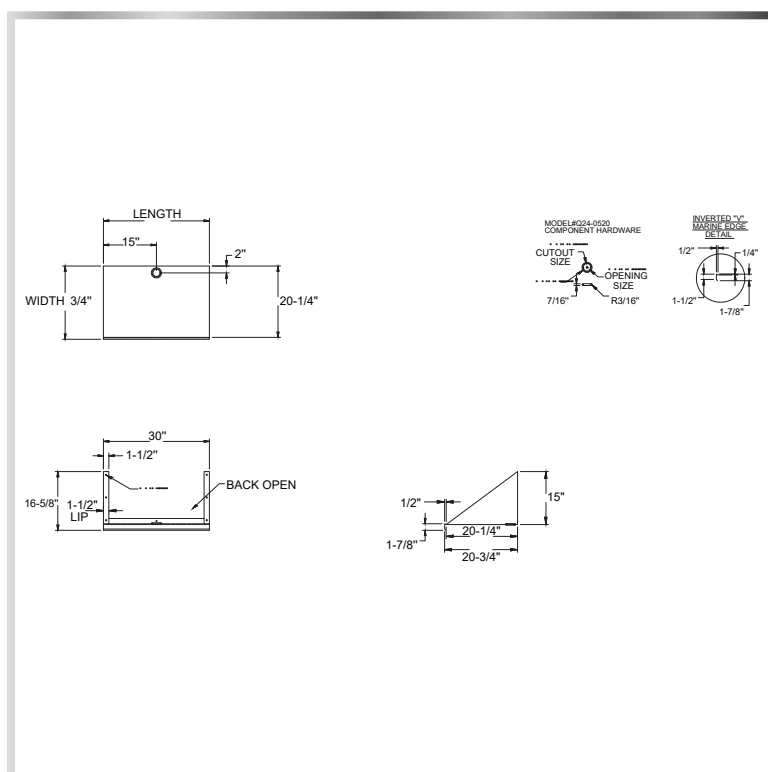
OPEN-BACK MICROWAVE SHELF

SHELVING - MICROWAVE



MATERIALS

- 18 Gauge 300 Series Stainless Steel



FEATURES

- Solid Base Wall Mounted Shelf
- 1-1/2" Mounting Back Lip
- 15" Angle Supports
- One Hole With Grommet for Appliance Cord
- Includes Mounting Kit

MODEL NUMBER	LENGTH	WIDTH
MWS-1824	24"	18"
MWS-2024	24"	20"
MWS-2424	24"	24"
MWS-2030	30"	20"