

# RackStar® 44ER

Rack Conveyor Dishwasher with  
Energy Recovery

## Standard Features

- Energy Recovery
- WISR® cleaning system
- Built-in 24kW booster heater
- Self-cleaning wash arms
- Adjustable rinse system
  - Econo uses 0.38 gallons per rack
  - Turbo uses 0.65 gallons per rack
- Rainbow Rinse™ with arched rinse arm design
- Automatic tank fill
- Digital LED display
- Delime cycle
- 19 3/4" (502 mm) vertical chamber clearance
- Adjustable vent cowl collars
- Exclusive EnergyGuard™ controls
- Hinged doors provide large front access for ease of cleaning and maintenance
- Double-wall insulated doors
- Stainless steel strainer pans
- Splash shields
- Strike plate table limit switch
- Self-draining stainless steel wash pump
- Built-in pressure regulator
- Vent fan control shuts vent fan off when machine is idle
- Stainless steel front dress panel
- Durable stainless steel construction
- Requires some assembly

## Options & Accessories

- |                                   |                                      |
|-----------------------------------|--------------------------------------|
| ➤ 460V Electrical                 | ➤ Replacement Cartridge for Scaltrol |
| ➤ Higher than Standard Hood (25") | ➤ 36-Compartment Rack                |
| ➤ Single Phase                    | 4-1/8" tall (105 mm)                 |
| ➤ Single Point Connection         | 5-5/8" tall (143 mm)                 |
| ➤ Drain Water Tempering Kit*      | 7" tall (178 mm)                     |
| ➤ Water Hammer Arrestor           | ➤ Combination Rack                   |
| ➤ Flanged Feet                    | ➤ Peg Rack                           |
| ➤ Security Package                | ➤ Sheet Pan Rack                     |
| ➤ Scaltrol                        |                                      |



## Specification Statement

Specified unit will be a Jackson RackStar 44 high temperature sanitizing rack conveyor dishwasher with energy recovery, rated by ETL Sanitation to NSF/ANSI Standard 3. Unit will be ENERGY STAR® certified. Unit to be rated for 224 racks per hour, with adjustable rinse system featuring Econo Rinse using 0.38 gallons per rack and Turbo Rinse using 0.65 gallons per rack. Unit includes WISR® cleaning system with self-cleaning wash arms, Rainbow Rinse™ with arched rinse arm design, and built-in 24kW booster heater. Features include digital LED display, EnergyGuard™ controls, 19 3/4" vertical chamber clearance, automatic tank fill, hinged double-wall insulated doors, self-draining 3.0 HP stainless steel wash pump motor, and vent fan control. Constructed of durable stainless steel with available flanged feet option.

1-year parts and labor warranty.

## Mandatory Specs

- Voltage \_\_\_\_\_
- Direction of Operation
  - ☐ Left to Right
  - ☐ Right to Left



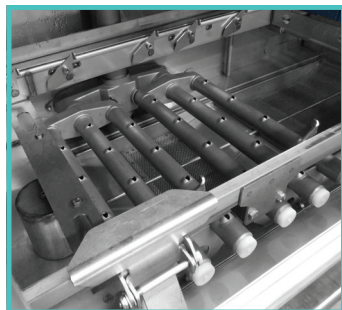
**Less Water.** Jackson maintains one of the lowest water usages in the conveyor class with the RackStar. The RackStar delivers superior results, using only 0.38 gallons of water per rack.

**Less Chemicals.** Lowering water usage also reduces the amount of chemicals required in each cycle, saving the operator on chemical costs. The RackStar provides one-pass cleaning, which also minimizes chemical usage by getting the ware *Clean the First Time®*.

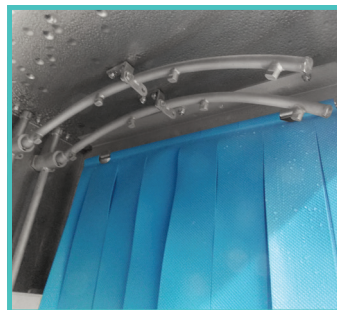
**Less Energy.** By using less water, the RackStar utilizes smaller tank and booster heaters, which lowers overall energy costs for years to come. In addition, the insulated doors retain heat, keeping wash water hot and generating less heat in the dish room.



PRODUCT	RACKS/HOUR	GALLONS/RACK	GALLONS/HOUR	BOOSTER HEATER 70 °F
Brand H	202	0.45	91	18kW
Brand C	209	0.48	100	21kW
Brand S	223	0.65	145	24kW
RackStar	224	0.38	85	24kW



**Dual Pawl Bar** provides easier access to scrap baskets and better balance to the rack as it is conveyed through the machine.



**Adjustable Rinse**  
Econo Rinse uses only 0.38 gallons per rack and is suitable for normal operations. Turbo Rinse uses 0.65 gallons per rack and is ideal for heavier soiled loads.



**Hinged Doors** provide easy access into the wash chamber for cleaning and maintenance.



**Digital LED Controls** are easy to read and feature an LED display that communicates temperature, status, and cycle selection.

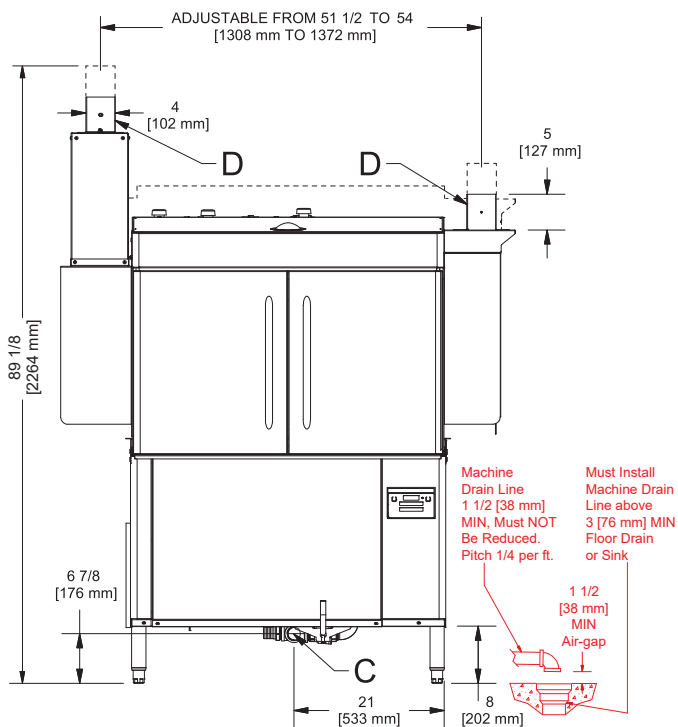
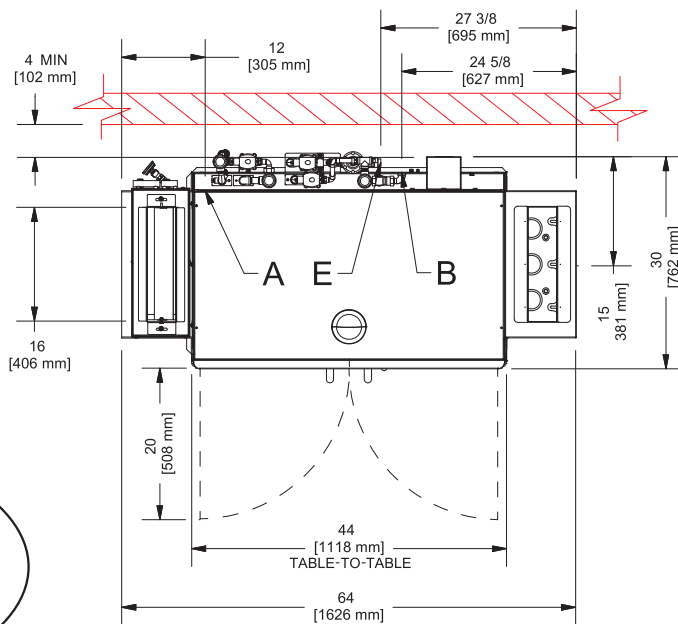
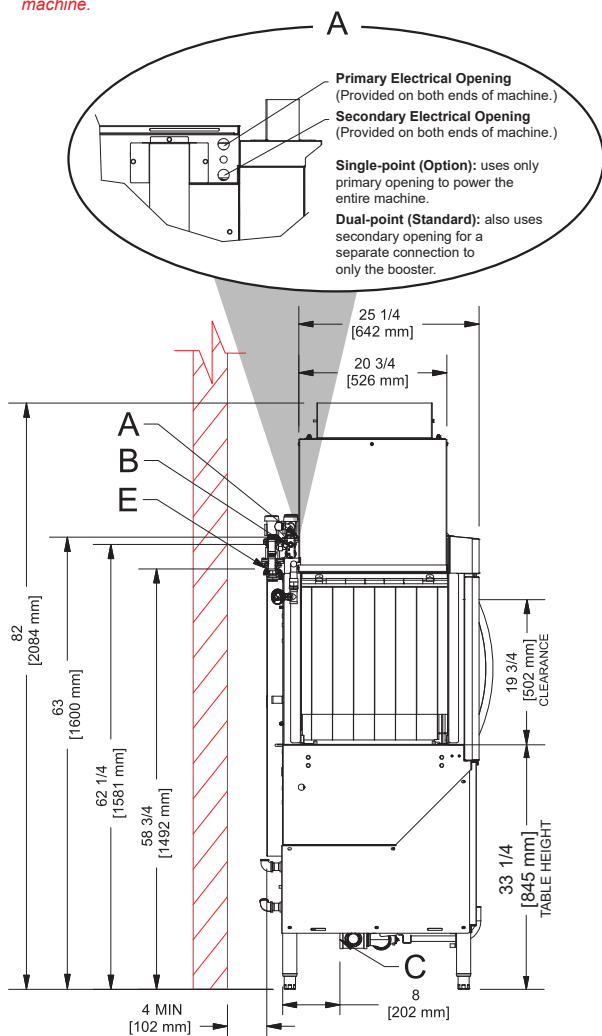
## Right to Left

### LEGEND

- A - Electrical Connection
- B - Water Inlet  
(1/2" NPT, 110 °F MIN (27 kW Booster))
- C - Drain Connection  
(1 1/2" NPT)
- D - Vent Connections  
(Including Dampers)
- E - Energy Recovery Water Inlet  
(1/2" NPT, 55 °F MIN)
- — — — — - Open Door
- - - - - - - - - - - High Hood Option

All dimensions from the floor can be increased 1 3/4" using the machine's adjustable feet.

Items in red are not supplied with the machine.



## Left to Right

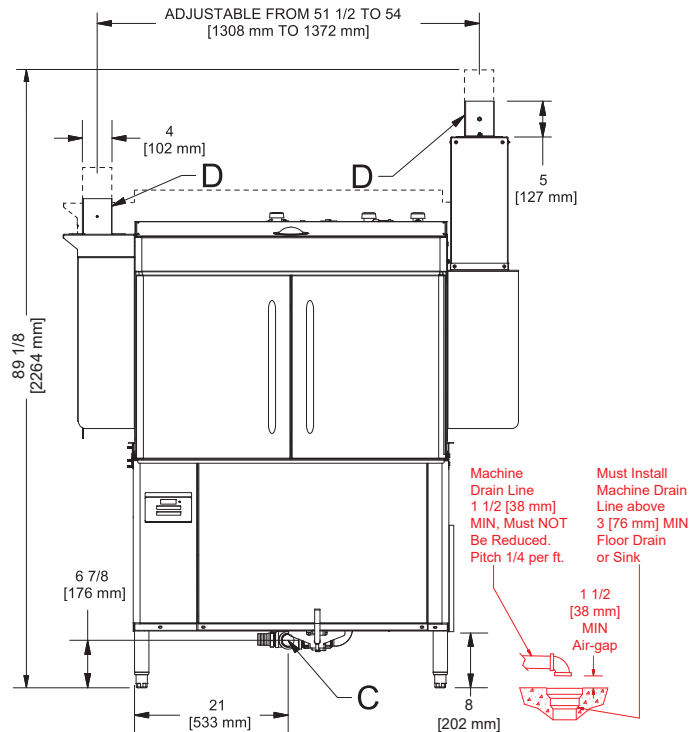
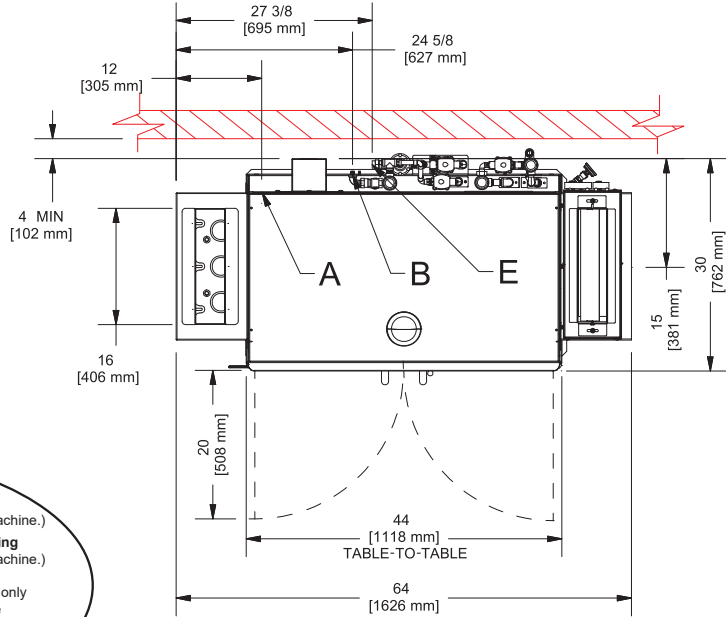
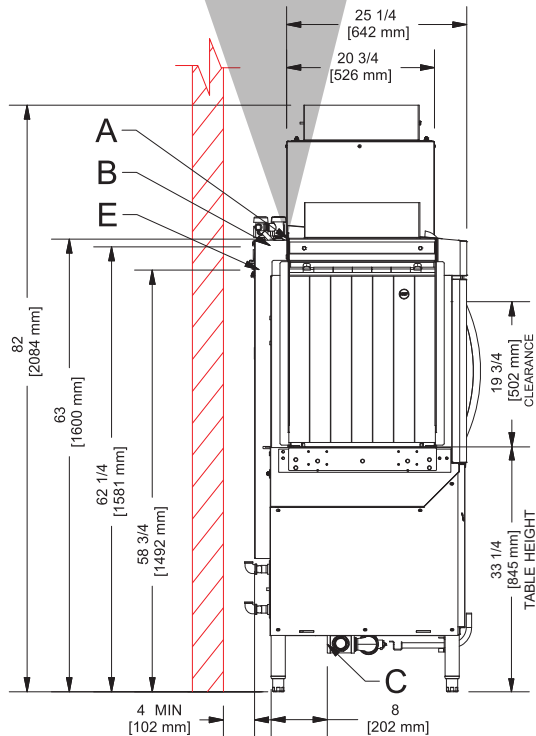
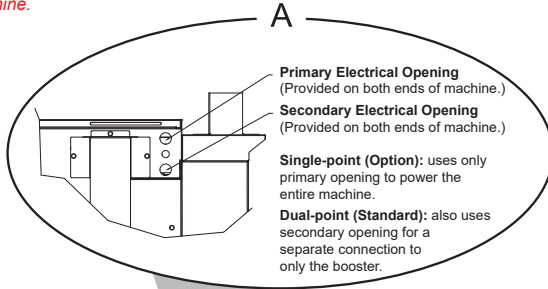
### LEGEND

- A - Electrical Connection
- B - Water Inlet  
(1/2" NPT, 110 °F MIN (24 kW Booster))
- C - Drain Connection  
(1 1/2" NPT)
- D - Vent Connections  
(Including Dampers)
- E - Energy Recovery Water Inlet  
(1/2" NPT, 55 °F MIN)

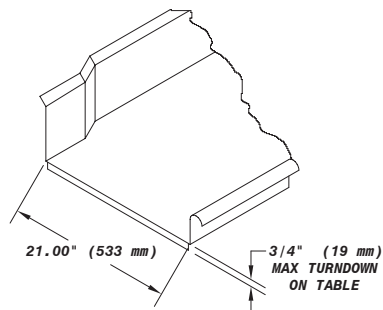
- — — — — - Open Door
- - - - - - - - - - - High Hood Option

All dimensions from the floor can be increased 1 3/4" using the machine's adjustable feet.

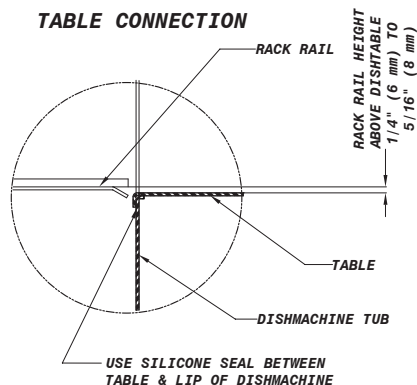
Items in red are not supplied with the machine.



#### RECOMMENDED TABLE FABRICATION



#### TABLE CONNECTION



#### Operating Capacity

|                  |       |
|------------------|-------|
| Racks per Hour   | 224   |
| Dishes per Hour  | 5,600 |
| Glasses per Hour | 8,064 |

#### Operating Speed

|                                  |                 |
|----------------------------------|-----------------|
| Conveyor Speed (feet per minute) | 6.10 (1.86 MPM) |
|----------------------------------|-----------------|

#### Operating Temperature

|                             |                |
|-----------------------------|----------------|
| Wash Temperature (minimum)  | 160 °F (71 °C) |
| Rinse Temperature (minimum) | 180 °F (82 °C) |

#### Water Consumption

|                              |                     |
|------------------------------|---------------------|
| Gallons per Rack             |                     |
| Econo Rinse                  | 0.38 (1.4 L)        |
| Turbo Rinse                  | 0.65 (2.5 L)        |
| Gallons per Hour             |                     |
| Econo Rinse                  | 85.12 (322.2 L)     |
| Turbo Rinse                  | 145.60 (551.2 L)    |
| Wash Tank Capacity (gallons) | 24.00 (90.8 L)      |
| Wash Pump Capacity           | 270 GPM (1,022 LPM) |

#### Water Requirements

|                                 |                |
|---------------------------------|----------------|
| Incoming Water Temperature      | 110 °F (43 °C) |
| Flow Pressure (PSI)             | 20 ± 2         |
| Incoming Water Connection (NPT) | 1/2"           |
| Drain Connection (NPT)          | 1 1/2"         |

#### Electrical Specifications

|                        |      |
|------------------------|------|
| Wash Pump Motor (HP)   | 3.0  |
| Drive Motor (HP)       | 1/4  |
| Wash Tank Heater (kW)  | 15.0 |
| Rinse Tank Heater (kW) | 24.  |

#### Venting Requirements (CFM)

|            |     |
|------------|-----|
| Input End  | 200 |
| Output End | 200 |
| Total      | 400 |

#### Dimensions

|                         |                   |
|-------------------------|-------------------|
| Width                   | 64" (1626 mm)     |
| Depth                   | 30" (762 mm)      |
| Depth with Door Open    | 50" (1270 mm)     |
| Height                  |                   |
| Standard                | 82" (2084 mm)     |
| High Hood               | 89 1/8" (2264 mm) |
| Inside Clearance Height |                   |
| Standard                | 19 3/4" (502 mm)  |
| High Hood               | 25" (635 mm)      |
| Wall Clearance          | 4" (102 mm)       |
| Drain Height            | 6 7/8" (175 mm)   |
| Weight                  |                   |
| Standard                | 727 lbs (330 kg)  |
| High Hood               | 737 lbs (334 kg)  |

#### Shipping Details

|                 |                  |
|-----------------|------------------|
| Shipping Weight |                  |
| Standard        | 880 lbs (399 kg) |
| High Hood       | 890 lbs (404 kg) |
| Shipping Width  | 76" (1930 mm)    |
| Shipping Depth  | 40" (1016 mm)    |
| Shipping Height | 75" (1905 mm)    |
| Shipping Cube   | 131.94 cu ft     |
| Shipping Class  | 150              |

## Single Point Connection

| Power Supply | Total Load | Minimum Circuit Ampacity | Maximum Overcurrent Protection |
|--------------|------------|--------------------------|--------------------------------|
| 208/60/3     | 118.6 A    | 120.9 A                  | 130.0 A                        |
| 230/60/3     | 99.6 A     | 101.8 A                  | 110.0 A                        |
| 460/60/3     | 50.0 A     | 51.1 A                   | 55.0 A                         |
| 208/60/1     | 202.4 A    | 205.8 A                  | 215.0 A                        |
| 230/60/1     | 169.1 A    | 172.1 A                  | 180.0 A                        |

## Dual Point Connection

| Power Supply     | Total Load | Minimum Circuit Ampacity | Maximum Overcurrent Protection |
|------------------|------------|--------------------------|--------------------------------|
| 208/60/3 Unit    | 51.9 A     | 54.2 A                   | 60.0 A                         |
| 208/60/3 Booster | 66.6 A     | 67.9 A                   | 70.0 A                         |
| 230/60/3 Unit    | 44.3 A     | 46.4 A                   | 50.0 A                         |
| 230/60/3 Booster | 55.3 A     | 56.6 A                   | 60.0 A                         |
| 460/60/3 Unit    | 22.3 A     | 23.4 A                   | 25.0 A                         |
| 460/60/3 Booster | 27.7 A     | 29.0 A                   | 30.0 A                         |
| 208/60/1 Unit    | 87.0 A     | 90.4 A                   | 100.0 A                        |
| 208/60/1 Booster | 115.4 A    | 116.7 A                  | 120.0 A                        |
| 230/60/1 Unit    | 73.3 A     | 76.3 A                   | 85.0 A                         |
| 230/60/1 Booster | 95.8 A     | 97.1 A                   | 100.0 A                        |

Advisory: Jackson WWS, Inc. DOES NOT endorse "Tankless On-Demand" water heaters for use with our dishmachines. Jackson WWS, Inc. DOES endorse, and highly recommends, standard "tank" style water heaters, sized to properly handle the water heating requirements of the facility.

## CONTACT JACKSON

07610-004-34-33 [07/21/25]

**Address**

 6209 N U.S. Highway 25E  
 Gray, Kentucky 40734

**Website**
[www.jacksonwws.com](http://www.jacksonwws.com)
**Telephone & Fax**

 T 888.800.5672  
 F 606.523.1799

**Email**
[customer.service@jacksonwws.com](mailto:customer.service@jacksonwws.com)


@JACKSONWWS



JACKSON WWS



JACKSON WAREWASHING SYSTEMS



@JACKSONWAREWASHING