

Solid Stainless Steel Shelving



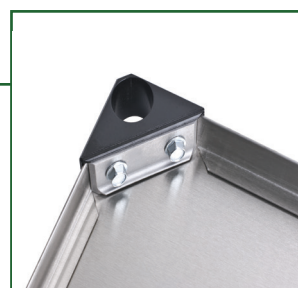
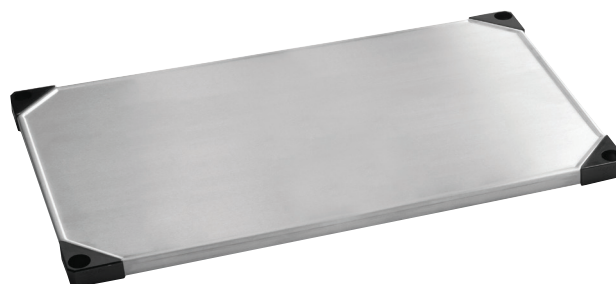
NSF APPROVED: These commercial rated solid and wire stainless steel shelves are ideal for any storage application, dry or wet.



1 YEAR LIMITED WARRANTY: Focus Foodservice offers a one year limited warranty on our stainless steel shelves against rust or corrosion under general conditional usage.

Stainless Performance

- Marine edge contains spills.
- Solid shelf great to use as top of a worktable.
- Die-cast corners add increased strength to the overall construction.
- Each shelf up to 48" in length is rated to support up to 800 lbs. of uniformly distributed weight. Shelves longer than 48" support 600 lbs.



Die-cast corners with heavy-duty bolt construction.

Solid Stainless Steel Shelves

Item #	Shelf Size (width x length)		Case
	(in.)	(cm)	
FF1430SSS	14" x 30"	35.5 x 76.0	1
FF1436SSS	14" x 36"	35.5 x 91.4	1
FF1448SSS	14" x 48"	35.5 x 122.0	1
FF1460SSS	14" x 60"	35.5 x 152.4	1
FF1824SSS	18" x 24"	45.7 x 61.0	1
FF1830SSS	18" x 30"	45.7 x 76.0	1
FF1836SSS	18" x 36"	45.7 x 91.4	1
FF1842SSS	18" x 42"	45.7 x 106.6	1
FF1848SSS	18" x 48"	45.7 x 122.0	1
FF1860SSS	18" x 60"	45.7 x 152.4	1
FF2424SSS	24" x 24"	61.0 x 61.0	1
FF2430SSS	24" x 30"	61.0 x 76.0	1
FF2436SSS	24" x 36"	61.0 x 91.4	1
FF2442SSS	24" x 42"	61.0 x 106.6	1
FF2448SSS	24" x 48"	61.0 x 122.0	1
FF2460SSS	24" x 60"	61.0 x 152.4	1



Stainless steel posts available in 63", 74" and 86" lengths in both stationary and mobile options (see page 7).

