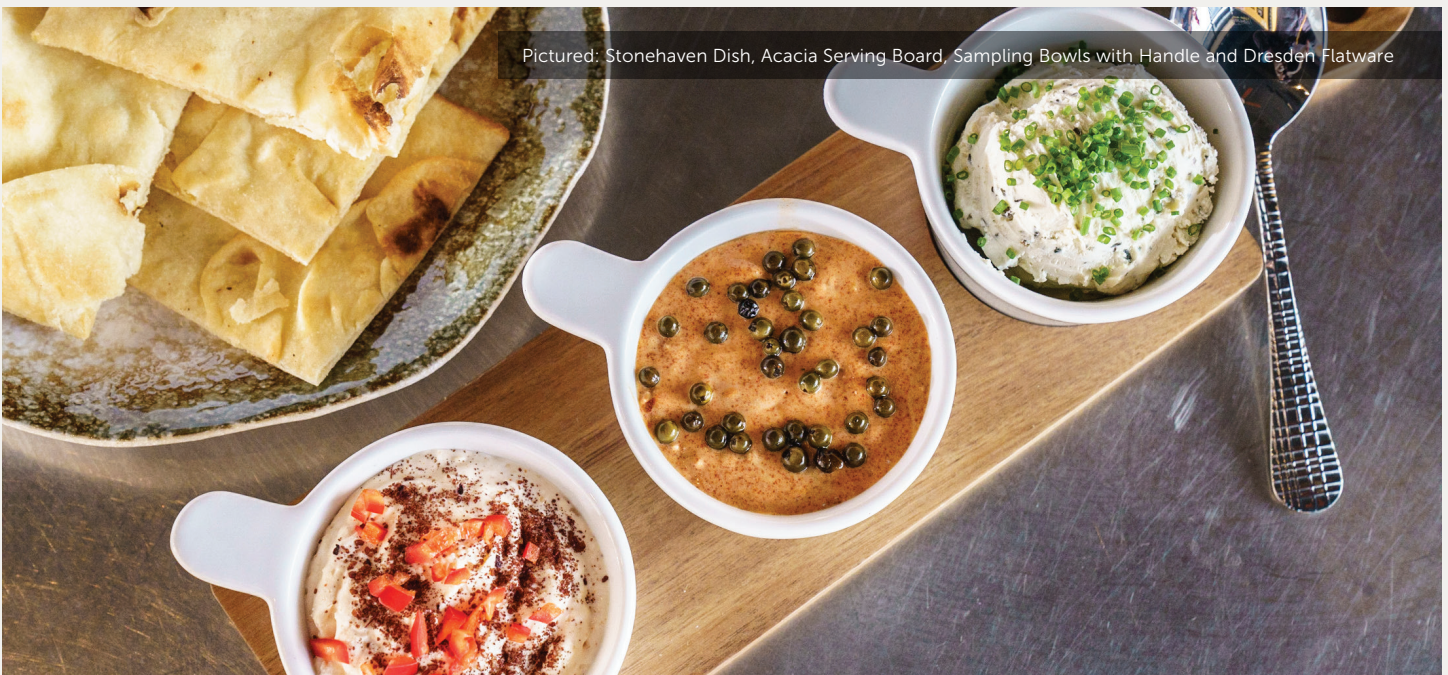


tavern



Samplers and Tasters

Accessories

ITI offers a large collection of sampler accessories including spoons, bowls and trays for individual portion presentations. Perfect for banquet or shareable sides.

casual dining

gastropubs

Available Colors

Bright White

Acacia Boards NEW

These acacia wood trays are beautiful ways to serve up your fare. They are designed to work with our Samplers and Tasters pieces and can be a fantastic serving piece alone. Hand wash.



Acacia Wood Three Hole Serving Board NEW

WD-133	13 ³ / ₄ " with handle x 4 ¹ / ₂ " (Fits FA-402)	1 doz
--------	-------------------------------------------------------------------------------------------------	-------

*Double-sided



Acacia Wood Three Hole Serving Board NEW

WD-143	14 ³ / ₈ " x 4" with handle (Fits FA-405, FA-404)	1 doz
--------	----------------------------------------------------------------------------	-------

*Double-sided



Acacia Wood Octagon Shape Serving Board NEW

WD-207	20 ³ / ₄ " x 7 ¹ / ₂ " with handle	1/2 doz
--------	--------------------------------------------------------------------------------	---------

*Double-sided



Acacia Wood Rectangular Serving Board NEW

WD-186	18 ³ / ₈ " x 6 ⁷ / ₈ " with handle	1/2 doz
--------	--------------------------------------------------------------------------------	---------

*Double-sided

Ceramic Trays NEW

These ceramic trays are a fantastic way to dress up your casual dining. Designed to have the shape of the aluminum trays, which have become so popular for serving; these trays create a more refined serving piece. Stackable for easy storage.



White Ceramic Tray NEW

TN-118-BW	11" x 8"	1 doz
TN-1107-BW	10" x 7"	1 doz



Grey Ceramic Tray NEW

TN-118-GR	11" x 8"	1 doz
TN-1107-GR	10" x 7"	1 doz



Aluminum Tray NEW

AL-T-139	13" x 9"	1 doz
AL-T-96	9" x 6"	2 doz



Rectangular Tray

FT-13	13½" x 4¼"	1 doz
-------	------------	-------



Rectangular Tray

FA-439	11" x 3¼"	1 doz
--------	-----------	-------

Fits FA-435, FA-436, FA-437, FA-438



Slider Tray

SL-160	16¼" x 4¾"	½ doz
SL-140	14" x 4¼"	½ doz
SL-120	12" x 3⅞"	1 doz



Rectangular Dish

FA-425	8" x 3" x 1⅜"H (10oz)	1 doz
FA-424	4" x 3" x 1⅜"H (8oz)	1 doz
FA-423	6¾" x 3¼" x 1⅜"H (8oz)	1 doz



Rectangular Dish Tray (Only)

FA-410	13½" x 4¾"	1 doz
--------	------------	-------

*Shown with FA-409 bowls



Rectangular Tray with Wells

FA-440	11¼" x 3¼" x ¼"H	1 doz
--------	------------------	-------

Fits FA-435, FA-436, FA-437, FA-438
*Shown with FA-435 ramekins



Square Stackable Ramekin

FA-435	2½"D x 1"H (1.5oz)	3 doz
--------	--------------------	-------



Square Stackable Ramekin

FA-436	2¾"D x 2½"H (6oz)	3 doz
--------	-------------------	-------



Square Stackable Ramekin

FA-437	3"D x 3"H (8oz)	1 doz
--------	-----------------	-------



Square Stackable Ramekin

FA-438	3⅞"D x 3⅞"H (11oz)	1 doz
--------	--------------------	-------



Square Stackable Ramekin

FA-443	2⅞"D x 1⅞"H (2oz)	3 doz
--------	-------------------	-------



Sampling Bowl

FA-418	5" (9oz)	1 doz
FA-411	3" (2oz)	1 doz



Sampling Bowl

FA-412	4 ³ / ₈ " x 3 ³ / ₈ " (2oz)	2 doz
--------	-------------------------------------------------------------------------	-------



Sampling Bowl

FA-413	3 ¹ / ₂ " x 2 ³ / ₄ " x 1 ¹ / ₈ "H (2oz)	3 doz
--------	------------------------------------------------------------------------------------------------------------	-------



Sampling Bowl

FA-414	3" (2oz)	3 doz
--------	----------	-------



Sampling Bowl with Handle

FA-400	3 ¹ / ₂ " x 2 ⁵ / ₈ " (1.75oz)	2 doz
--------	----------------------------------------------------------------------------	-------



Sampling Bowl with Handle

FA-401	4 ³ / ₄ " x 2 ¹ / ₂ " (2oz)	2 doz
--------	-------------------------------------------------------------------------	-------



Sampling Teardrop Bowl

FA-402	4" x 3" (1.5oz)	2 doz
--------	-----------------	-------



Sampling Bowl with Handle

FA-403	5" x 3" (3.5oz)	2 doz
--------	-----------------	-------



Sampling Deep Bowl with Handle

FA-404	4 ³ / ₈ "D x 3 ³ / ₈ "H (4.5oz)	2 doz
--------	-----------------------------------------------------------------------------	-------



Sampling Skillet with Handle

FA-405	4 ¹ / ₄ " x 3 ⁵ / ₈ " x 1"H (2oz)	3 doz
--------	-------------------------------------------------------------------------------	-------



Bowl with Handle

FA-409	4 ³ / ₈ "D x 3 ¹ / ₄ "H (3oz)	1 doz
--------	---------------------------------------------------------------------------	-------

Fits FA-410 tray



Sampling Dish with Handles

FA-417	5 ¹ / ₄ "D x 1"H (5oz)	1 doz
--------	----------------------------------------------	-------

Fry Baskets NEW

The mini fry basket adds a fun touch to the serving of any appetizer or side. It is versatile and works with dinnerware, acacia boards, and our new ceramic trays. A great way to refresh your tabletop.



Fry Basket Round

FB-SS-35 7½" x 3½" x 3¼" H with handle 4 doz

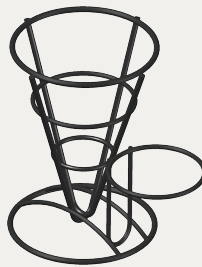


Fry Basket Square

FB-SS-43 7¼" x 3¾" x 5¼" H with handle 4 doz

Appetizer Cones

Our versatile appetizer cones can accommodate up to three ramekins. It's a great way to increase your appetizer sales and profits. Fits any of our 3 oz ramekins.



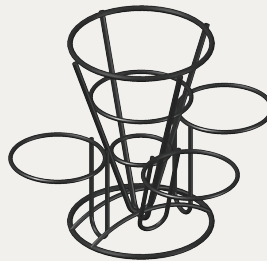
Single Cup Black Iron Fry Cone

WC-701 5"D x 7"H 1 piece



Double Cup Black Iron Fry Cone

WC-702 5"D x 7"H 1 piece



Triple Cup Black Iron Fry Cone

WC-703 5"D x 7"H 1 piece



No Cup Black Iron Fry Cone

WC-700 5"D x 7"H 1 piece



Wax Paper For Fry Cones

WPP-12 12" square 1 pack (500 sheets)



Fluted Ramekin

RAMF-3 3⅞" D x 1½" H (3oz) 3 doz

AVAILABLE COLORS

- B
- CB
- CR
- G
- LB
- O
- Y
- AW
- EW



Pictured: Acacia Serving Board, Fry Baskets, and and Sampling Teardrop Bowl



Cone Shaped Bowl

FA-429	4"D x 6"H (13oz)	1 doz
FA-428	3½"D x 5¼"H (8oz)	1 doz



Appetizer Cup

AP-7	6¾"D x 7"H (18oz)	1 doz
AP-5	4⅞"H x 5"H (8oz)	1 doz



Mini Pot Bowl

FA-426	3⅞"D x 2¾"H (6oz)	1 doz
--------	-------------------	-------



Gold Fish Sampling Spoon

FA-406	3¾" L	3 doz
--------	-------	-------



Sampling Spoon

FA-407	4¾"L	3 doz
--------	------	-------



Sampling Spoon

FA-408	5⅞"L	3 doz
--------	------	-------



Spoon

MD-101	5"L	4 doz
--------	-----	-------



Sauce Plate

MD-117	7" x 3"	3 doz
MD-108	5½" x 2¾"	3 doz



Small Sauce Dish

FA-25	3¾" x 2½" x 1"H (2oz)	4 doz
-------	-----------------------	-------



Pisces Sampling Dish

FA-434	6" (6oz)	2 doz
FA-433	4¼" (1.5oz)	2 doz



Sampler Platter

FA-601	15⅝" x 4¾" (Fits FA-600)	1 doz
--------	-----------------------------	-------



Bowl

FA-600	5"D x 3¾"H (6oz)	2 doz
--------	------------------	-------

*Each dish sold separately



Slanted Side Bowl

FA-10	10"D x 4½"H (35oz)	½ doz
FA-85	8½"D x 4"H (22oz)	1 doz
FA-77	7"D x 3⅝"H (10.5oz)	2 doz
FA-55	5"D x 2½"H (3oz)	3 doz
FA-44	4"D x 1¾"H (2oz)	3 doz



Istan Bowl

FA-422	7"D x 2½"H (34oz)	1 doz
FA-421	5"D x 2¼"H (16oz)	1 doz
FA-420	4"D x 1⅞"H (8oz)	1 doz



Soup/Rice Bowl

MD-113	9"D x 4¼"H (72oz)	½ doz
MD-112	8"D x 3¾"H (58oz)	1 doz
MD-1070	7"D x 3¼"H (36oz)	1 doz
MD-1060	6"D x 3"H (24oz)	2 doz
MD-1050	5"D x 2½"H (12oz)	2 doz



Slanted Oval Bowl

DO-900	7½"D x 4⅝"H (10oz)	1 doz
--------	--------------------	-------



Oval Bowl

DO-910	5"D x 4⅝"H (7oz)	3 doz
DO-922	6½"D x 5⅝"H (13oz)	2 doz



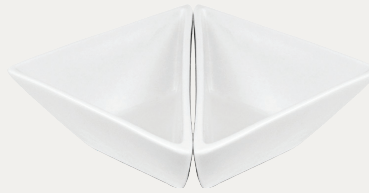
Square Bowl

FA-427	3"D x 2½"H (7oz)	1 doz
--------	------------------	-------



Rectangular Scooped Bowl

FA-419	3¾" x 2½" x 1¼"H (3oz)	2 doz
--------	------------------------	-------



Triangle Bowl

FA-108	8½"D x 2"H (10oz)	1 doz
--------	-------------------	-------

*Each dish sold separately



Four Divided Bowl

FA-65	6¾"D x 4¼"H (7oz)	1 doz
FA-50	5¼"D x 3"H (2oz)	1 doz
FA-45	4½"D x 2¾"H (1.5oz)	1 doz



Square Dish

FA-7	4½"D x 1½"H (7oz)	3 doz
------	-------------------	-------



Crescent Dish

FA-29	9"D x 1⅞"H (15oz)	1 doz
FA-28	8"D x 1"H (9oz)	1 doz
FA-26	6"D x ¾"H (3oz)	1 doz



Pictured: Acacia Serving Board and Bakeware



2-Compartment Sauce Dish

FA2-5	5" x 1"H (2.5oz wells)	3 doz
FA2-3	3" x ¾"H (0.5oz wells)	4 doz



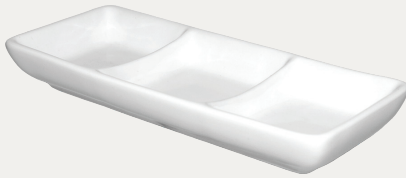
2-Compartment Elite™ Bowl

EL-222	8¼" x 4" (10oz wells)	1 doz
--------	-----------------------	-------



2-Compartment Bristol™ Dish

BL-975	9⅞" x 3½" (3oz)	1 doz
BL-800	7¾" x 3" (1.5oz)	1 doz



3-Compartment Sauce Dish

FA3-99	8¾" x 4¼" (4oz wells)	2 doz
FA3-66	5⅞" x 2⅜" (1oz wells)	3 doz



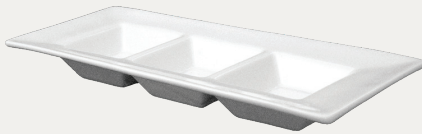
3-Compartment Elite™ Bowl

EL-333	13¼" x 4" (10oz wells)	½ doz
--------	------------------------	-------



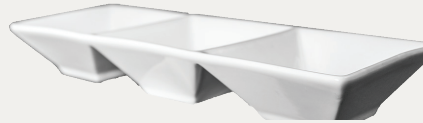
3-Compartment Bristol™ Bowl

BL-333	9½" x 3¼" (3.5oz wells)	1 doz
--------	-------------------------	-------



3-Well Sauce Plate

FA-33	10¼" x 4⅞" (1oz wells)	2 doz
-------	------------------------	-------



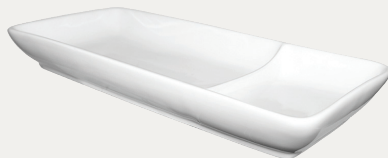
Triple Square Bowl

FA3-15	15⅞" x 5" (11oz wells)	1 doz
FA3-12	12" x 4" (5oz wells)	2 doz
FA3-9	9" x 3" (2oz wells)	3 doz



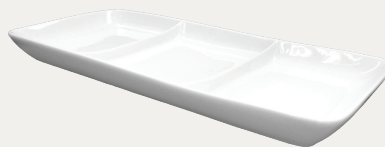
Triple Oval Bowl

FA3-185	18½" x 5¼" (11oz wells)	1 doz
FA3-165	16½" x 4½" (7oz wells)	1 doz
FA3-145	14½" x 4" (5oz wells)	2 doz



2-Compartment Plate

FA2-120	12" x 5"	1 doz
FA2-10	10" x 4½"	2 doz



3-Compartment Plate

FA3-16	16" x 6"	2 doz
FA3-120	12½" x 5"	3 doz



Unity Plate

FA2-14	14" (15oz outer wells, 9.5oz inner well)	1 doz
FA2-12	12" (9.5oz outer wells, 7oz inner well)	2 doz



Snail Plate

SN-16-EW	10½"	3 doz
SN-8-EW	8½"	4 doz



Serving Plate

FA-442	10" x 1½"H (48oz)	½ doz
FA-441	10" x 1½"H (32oz, 6oz well)	½ doz



Divided Plate

DIV-10	10"	2 doz
DIV-9	9"	1 doz



Soup & Sandwich Plate

FAW-1460	14½" x 6¾"	½ doz
----------	------------	-------

Fits FA-10, FA-420, FA-421, MD-113.
Shown with FA-420



Side & Sandwich Plate

FAW-1465	14½" x 6¾"	½ doz
----------	------------	-------



Escargot Dish

ESC-85	8¾"	3 doz
--------	-----	-------



Kite Plate with Well

KT-160	16" (3.5oz wells)	½ doz
KT-145	14½" (2.5oz wells)	½ doz
KT-125	12½" (1.5oz wells)	1 doz



Pictured: Soup and Sandwich Plate