

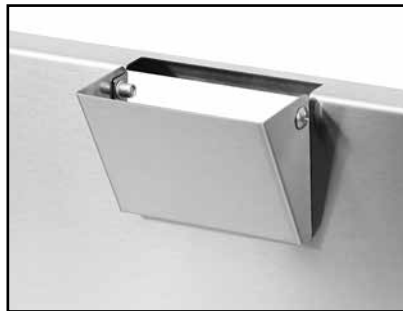
Project: _____	AIA# _____
Item #: _____ Qty: _____	SIS# _____
Model #: _____	

## Extra-Deep Ice Bins

See reverse side for model number key



IBA-24-ED



TC-BS Accessory

### Standard Features

- Includes extra-deep liner for 38% more capacity than a standard liner
- All stainless steel construction
- One-piece, seamless top and backsplash
- PVC plastic breaker strip around ice bin liner: creates 5/16" raised edge around liner, acts as thermal barrier to prevent heat transfer, and makes the cover slide easier.
- Tubing chase available centered in backsplash of 12" and larger models. Specify accessory model #TC-BS.
- Backsplash mounted, hot and cold water ice-melting faucet available. Specify accessory model # IMF.
- 24" deep version provides larger ice bin not just a deck extension on the back of the 19" deep model
- Sliding stainless steel cover
- Eco friendly foamed-in-place insulation has zero impact on global warming or ozone depletion
- Adjustable stainless steel bullet feet
- Models available with ten circuit cold plate



**Intertek**

4004503

Conforms to ANSI/NSF STD 2

Underbar installation instructions: <https://www.glastender.com/support/documents/manuals/underbar-installation-instructions>

Cleaning & care instructions: <https://www.glastender.com/support/documents/manuals/general-cleaning-and-care-instructions-for-stainless-steel>

### Specifications

#### Drain

- Non-cold plate model: 1-1/2" tailpiece
- Ten circuit cold plate model '-CP10-': 3/4" MPT

#### Tubing Chase in Backsplash (Optional)

- 2-3/8" by 4" hole centered in backsplash

#### Cover

- Two-piece sliding cover, 20 gauge stainless steel, included with all models

#### Cold Plate (Models with '-CP10-' in model number)

- Ten circuit available with all 24" and wider models
- Connection is 5/16" O.D. stainless steel tubing with swaged end

#### Liner Depth

- 14-1/2"

#### Ice Capacity

- "A" depth = 3.85 lbs X length
- "B" depth = 4.89 lbs X length

#### Legs

- 1-5/8" diameter 16 gauge stainless steel
- Stainless steel bullet feet

#### Materials

- 20 gauge stainless steel
- PVC plastic breaker strip around opening of ice bin liner

**Glastender, Inc.** • 5400 North Michigan Road • Saginaw, MI • 48604-9780  
989.752.4275 • 800.748.0423 • Fax 989.752.4444  
www.glastender.com

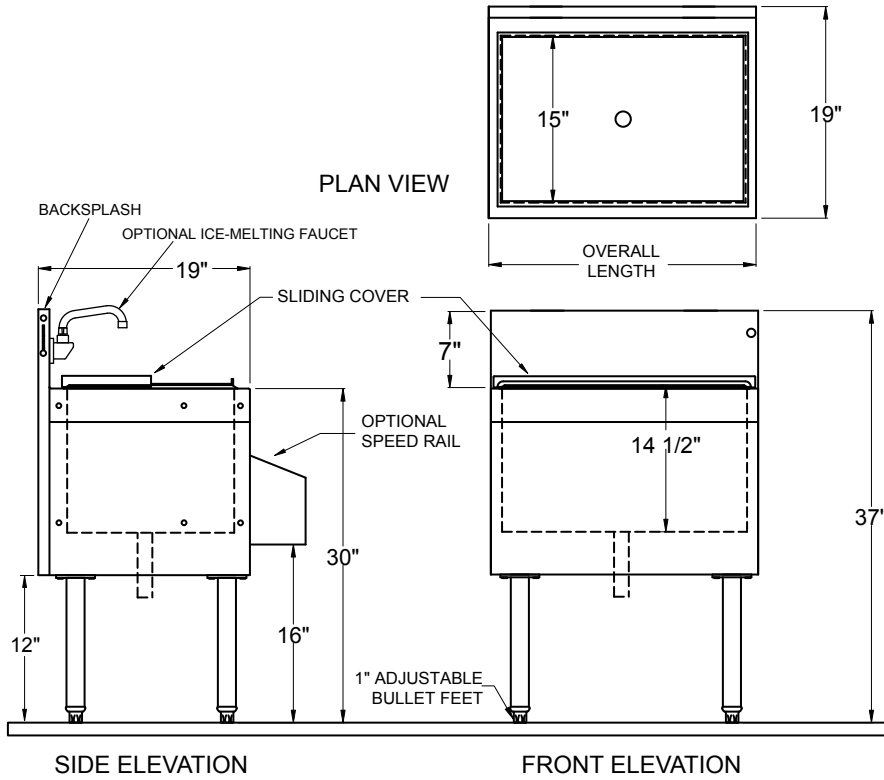
Approval/Notes:

Specifications subject to change without notice. For current specifications please visit our website.

# Extra-Deep Ice Bins

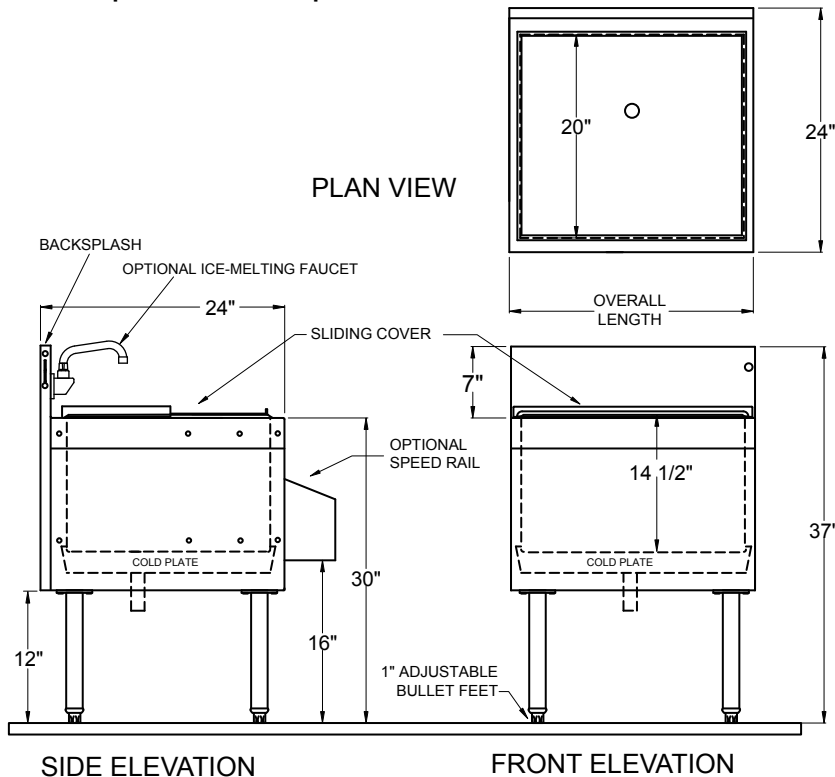
## Dimensional Information

### "A" Depth-19" Deep Models



Models Without Cold Plate	Overall Length
IBA-18-ED	18"
IBA-24-ED	24"
IBA-30-ED	30"
IBA-36-ED	36"
IBA-42-ED	42"
IBA-48-ED	48"
Models With Cold Plate	Overall Length
IBA-24-CP10-ED	24"
IBA-30-CP10-ED	30"
IBA-36-CP10-ED	36"
IBA-42-CP10-ED	42"
IBA-48-CP10-ED	48"

### "B" Depth-24" Deep Models



Models With Cold Plate	Overall Length
IBB-24-CP10-ED	24"
IBB-30-CP10-ED	30"
IBB-36-CP10-ED	36"
IBB-42-CP10-ED	42"
IBB-48-CP10-ED	48"