

Bissell®

BigGreen Commercial®

"No. 13" Orbital Floor Machine

Commercial grade multi-purpose floor machine. Easy to use finger control. Extremely versatile and effective for all flooring surfaces.

"No. 13" is an Orbital, single disc, multi-surface floor machine. It can scrub and polish natural stone, LVT, ceramic tile, brick, marble, concrete and wood. It can also be used for encapsulation and bonnet cleaning of carpet. The orbital drive provides safe, torque free operation for ease of use and make it ideal for rental; unlike traditional 175 RPM swing machines which require a trained operator. The "No. 13" comes standard equipped with a pad driver, white polish pad and blue medium grade scrub brush.



- Dry cleans carpet and removes allergens.
- Buffs and sands hard wood floors.
- Scrubs and cleans ceramic tile and grout.
- Scrubs and cleans concrete and removes oil.
- Polishes and strips vinyl.
- Scrubs and cleans brick.
- Scrubs and cleans slate.
- Cleans, polishes and protects marble.



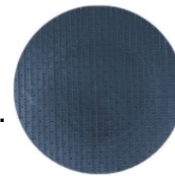
Wheels for easy transportation.

Easy to operate
No Torque
No Gouging
No Swirling



Orbital Drive

Standard Accessories



Pad Holder



Nylon Pad

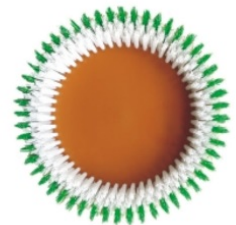


Medium Brush

Optional Accessories



Soft Brush



Hard Brush

Item Number:	BGORB13
Motor:	1/3 HP, 3.5 amps
Power Cord:	30' grounded 3 wire 18/3
Weight:	35 lbs.
Cleaning Path:	13"
Pad Drive Size:	10"
Pad Size:	12"
Pad Speed:	175 RPM
Warranty:	5 year motor, 1 year limited overall