



The Signature of Quality

### FEDERAL INDUSTRIES

A Standex Company

215 Federal Avenue  
Belleville, Wisconsin 53508-9201

Phone: 800-356-4206

Fax: 608-424-3234

Email: Geninfo@Federalind.com

Website: Federalind.com

Project Name: \_\_\_\_\_

Item #: \_\_\_\_\_

Model #: \_\_\_\_\_ Qty: \_\_\_\_\_

Approval: \_\_\_\_\_

AIA #

SIS #

## VISION SERIES - Slim-Line Display Case - 60"

Designed to help you make the most of your limited space with a slim 24" depth while delivering a bold, attention-grabbing design that highlights your merchandise.



Model VRSL7260S  
Shown with Options

MODEL	DIMENSIONS (Includes End Panels)
<input type="checkbox"/> VRSL3660S	36 x 24 x 60 (in) 914 x 610 x 1524 (mm)
<input type="checkbox"/> VRSL4860S	47.25 x 24 x 60 (in) 1200 x 610 x 1524 (mm)
<input type="checkbox"/> VRSL6060S	59.25 x 24 x 60 (in) 1505 x 610 x 1524 (mm)
<input type="checkbox"/> VRSL7260S	71.25 x 24 x 60 (in) 1810 x 610 x 1524 (mm)

### STANDARD FEATURES

#### Model Features

- Black interior including shelves
- Stainless steel display deck
- Tempered glass ends
- Black powder coated base frame
- Moisture resistant end panel construction
- Choice of standard colors on lower millwork panel
- Black trim
- Adjustable leg levelers
- Cord & 90 degree plug, self-contained only
- Front air intake / front discharge
- Energy saving night curtain

#### Refrigeration

- R290 refrigerant
- Electronic temperature control maintains 38°-40°F (3.3°-4.4°C) Note: Case temperatures will vary if the air curtain is disrupted.
- Digital thermometer
- Clear coil on demand defrost
- Condensate Pan
- Coated evaporator coil

#### Shelving

- Two tiers of adjustable black metal shelves with black price tag molding
- Shelves can be flat or slanted down at 10°

#### Lighting

- 3500K LED top light

#### Agency Approvals

- UL, C-UL and UL Sanitation listed to NSF-7, Type I conditions
- DOE 2017 compliant

### OPTIONAL ACCESSORIES

- White interior (including shelves)
- Stainless steel interior (including shelves)
- Stainless steel or glass shelves in lieu of black
- 3500K LED lights below shelves
- Additional lighted 3500K LED shelf
- High output condo pan - self-contained units only
- Self-cleaning condenser
- Stainless steel exterior finish
- Premium exterior laminate
- Graphics package
- Solid end panels (mirrored interior)
- Reflective end glass
- Clear or reflective glass, sliding rear doors (Solid hinged on 36" cases)
- 6" legs (152mm)
- Seismic legs
- Skirt w/4" casters or legs
- 2 1/2" (63.5mm) recessed or 4" (101.6mm) casters (self-contained models only) (Weight limits may apply)
- Joining kit for continuous line-ups (not available with casters)
- Front wire display basket
- Front cart bumper
- Roll-Down locking security cover (black, white, or gray)
- Black polycarbonate removable locking security cover

\*Additional options available on the website and price list.



**WARRANTY\***  
One year Parts and Labor  
2nd thru 5th year part only  
service compressor  
(U.S.A. and Canada)

**Note: Information is subject to change at any time. Visit [www.federalind.com](http://www.federalind.com) for the most current specs.**

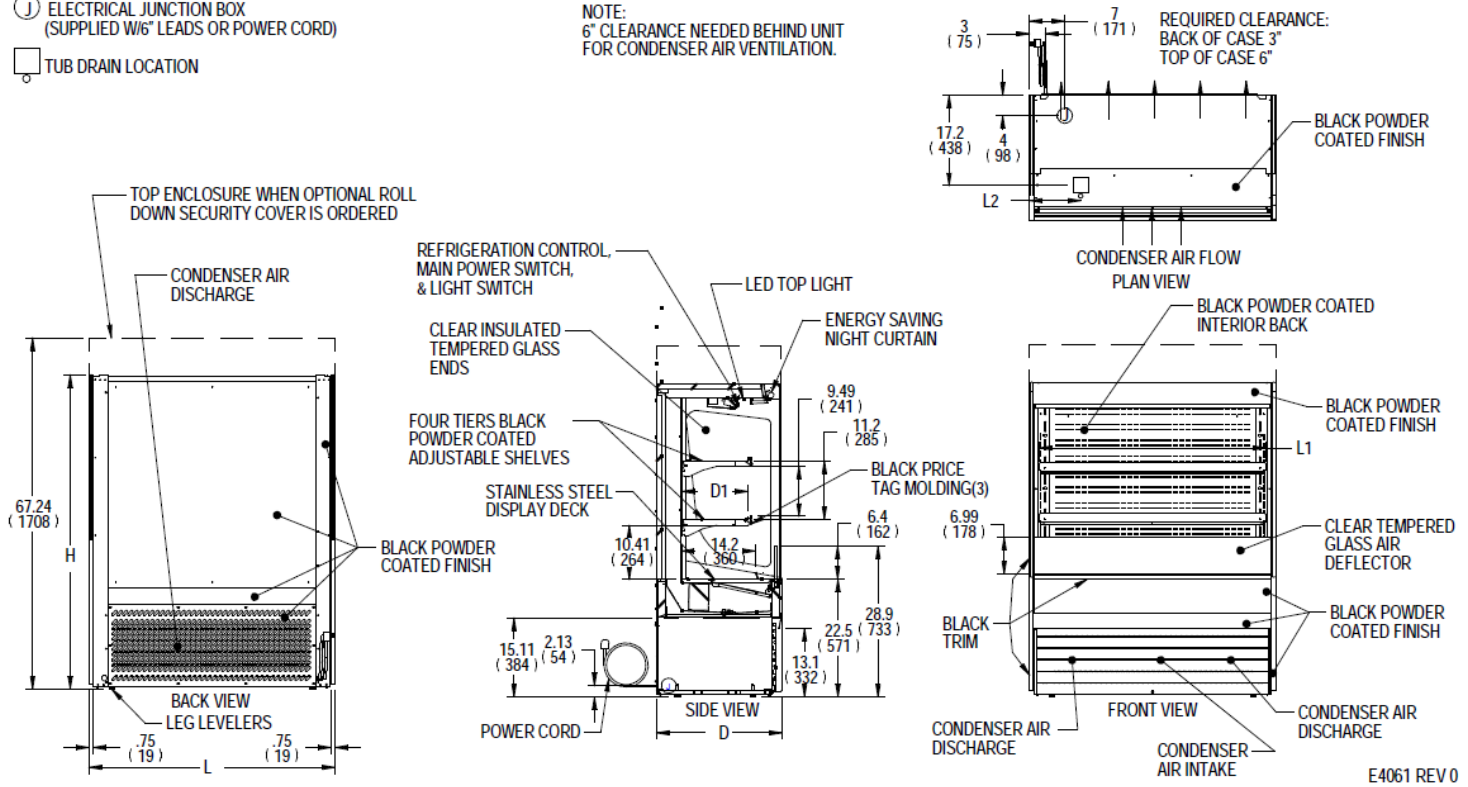
AIA #	<b>VISION SERIES - Slim-Line Display Case - 60"</b>
SIS #	Product Specifications

Intended Environment: Type I (Self-Contained) - Designed to operate in maximum ambient conditions of 75°F (24°C) and 55% relative humidity.		
Zone	Intended Product To Be Displayed	Avg Prod Temp °F/°C
All	Packaged Refrigerated Products	38°F / (3.3°C)

**SYMBOL KEY:**

- ELECTRICAL JUNCTION BOX (SUPPLIED W/6" LEADS OR POWER CORD)
- TUB DRAIN LOCATION

**NOTE:**  
6" CLEARANCE NEEDED BEHIND UNIT FOR CONDENSER AIR VENTILATION.



E4061 REV 0

MODEL	DIMENSIONS			TUB DRAIN L2	SHELVING			INTERIOR VOLUME CU FT	ELECTRICAL			STANDARD CONNECTION CORD & PLUG			REFRIGERANT	CONDENSAT E REMOVAL	SHIP WEIGHT
	L	D	H		# OF TIERS	L1	D1		2 WIRE + GROUND	AMPS	MAX FUSE SIZE	NEMA CORD &					
	in	in	in			in	in										
	mm	mm	mm			mm	mm										
VRSL3660S	36	24	60	6.74	2	32.25	12.6	13.30	120/60/1	16	20	NEMA 5-20P	R290	INTEGRATED PAN	500		
	914	610	1524	171		819	320								227		
VRSL4860S	47.25	24	60	13.49	2	43.25	12.6	17.70	208-240/60/1	11	15	NEMA 6-15P	R290	INTEGRATED PAN	590		
	1200	610	1524	343		1099	320								268		
VRSL6060S	59.25	24	60	14.12	2	55.25	12.6	22.70	208-240/60/1	16	20	NEMA 6-20P	R290	INTEGRATED PAN	750		
	1505	610	1524	359		1403	320								340		
VRSL7260S	71.25	24	60	20.12	2	67.25	12.6	27.60	208-240/60/1	16	20	NEMA 6-20P	R290	INTEGRATED PAN	810		
	1810	610	1524	511		1708	320								367		

- Due to continuing engineering improvements, specifications are subject to change without notice
- Case temperature will vary if the air curtain is disrupted.



**FEDERAL INDUSTRIES**  
A Standex Company  
215 Federal Avenue Belleville, Wisconsin 53508-9201

**Phone:** 800-356-4206  
**Fax:** 608-424-3234  
**Email:** Geninfo@Federalind.com  
**Website:** Federalind.com