



Item: _____

Quantity: _____

Project: _____

Delux Series

Models: RDR-6 RDR-4G12 RDR-2G24 RDR-G36 RDR-4-36
 RDR-4RG12 RDR-6SU RDR-4GT12 RDR-2GT24 RDR-GT36



RDR-2G24

Gas Type: Natural LP

Elevation (if above 2000 ft.): _____

Standard Features

- Fully welded frame with lifetime warranty
- All stainless steel burner box
- 1,200°F mineral wool insulation
- Stainless steel drip tray/grease can
- Stainless steel front, sides, valve cover, and kick plate including backguard and high shelf
- Stainless Steel oven "U" burner rated at 35,000 BTU/hr
- Oven pilot with 100% safety shut down
- Two piece, heavy duty lift off cast iron burner heads rated at 30,000 BTU/hr
- 12" x 12" cast iron top grates with pilot shield
- Five position heavy gauge chrome rack guides
- One chrome rack per oven
- Five surface porcelain oven interior
- Stainless steel tubing for burners and pilots
- 3/4" thick polished steel griddle plate
- GT Griddle Series - standard with one thermostat per two burners
- SU - step up rear burners
- RG - raised griddle/broiler

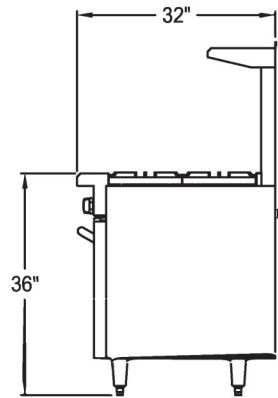
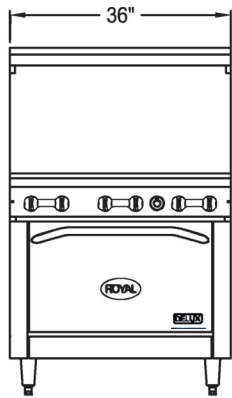
Options and Accessories

- 6" high S/S stub back in lieu of high shelf
- 1" thick griddle plate
- Griddle on right (Left hand side standard)
- Chrome griddle plate
- Grooved griddle (specify width: _____")
- One thermostat per burner (GT Griddle Series)
- Convection Oven base - add suffix "-C"
- 12" hot top section - add suffix "-HT"
- 9" deep S/S front landing ledge, with or without sauce pan cutouts
- Additional oven racks
- Open storage cabinet base - add suffix "-XB"
- Cabinet doors
- Intermediate shelf
- Wok burner head with 10" diameter S/S ring
- 48" quick disconnect and restraining cable
- 5" swivel casters (set of four - 2 locking)

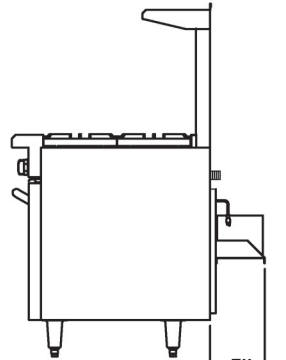


LIMITED WARRANTY, TWO YEAR PARTS AND ONE YEAR LABOR

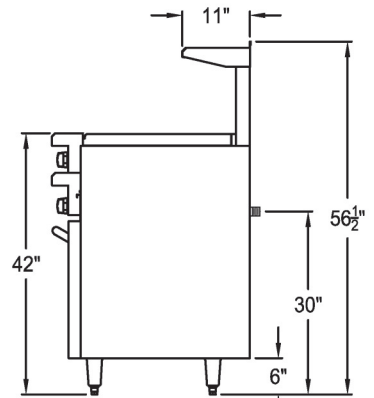
36" Gas Restaurant Range



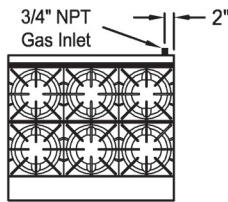
Standard Oven



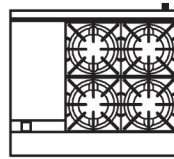
Convection Oven



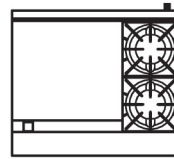
Raised Griddle



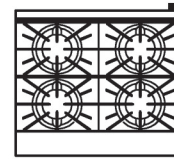
RDR-6



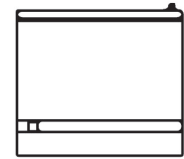
RDR-4G12



RDR-2G24



RDR-4-36



RDR-G36

Model Number	Open Burners	Griddle Burners	Total BTU	Ship Weight
RDR-6	6	0	215,000	600 lbs.
RDR-4-36	4	0	155,000	580 lbs.
RDR-2G(T)24	2	2	135,000	630 lbs.
RDR-4G(T)12	4	1	175,000	620 lbs.
RDR-G(T)36	0	3	95,000	650 lbs.
RDR-4RG12	4	1	175,000	655 lbs.
RDR-6SU	6	0	215,000	610 lbs.

Notes:

- For no oven (cabinet base) add suffix "-XB" and deduct 35,000 BTUs.
- For Convection Oven (30,000 BTU/hr) add suffix "-C" and deduct 5,000 BTUs.
- Open burners at 30,000 BTU/hr each.
- Griddle Burners: 1 per 12" at 20,000 BTU/hr each.
- Oven burner at 35,000 BTU/hr.

Gas Connection:

3/4" NPT on the right hand rear of the appliance.

The pressure regulator (supplied) is to be connected by the installer.

Specify type of gas and altitude, if over 2,000 feet, when ordering.

Electrical Requirements:

Convection Oven: 120 V, 50/60hz, 1 Ph., 8 amps

Two speed motor (1725/1140 RPM) 1/2 HP

Provided with 6' power cord fitted with a standard three prong grounded plug.

Gas Pressure:

5" W.C.	Natural Gas
10" W.C.	Propane

Clearances:

	Combustible	Non-Combustible
Rear	4"	0"
Sides	15"	0"

Due to continuing product development to ensure best possible performance, these specifications are subject to change without prior notification.

Royal Range of California

3245 Corridor Dr. • Eastvale, CA 91752 • (800) 769-2414 • (951) 360-1600

Fax: (951) 360-7500 • www.royalranges.com • sales@royalranges.com