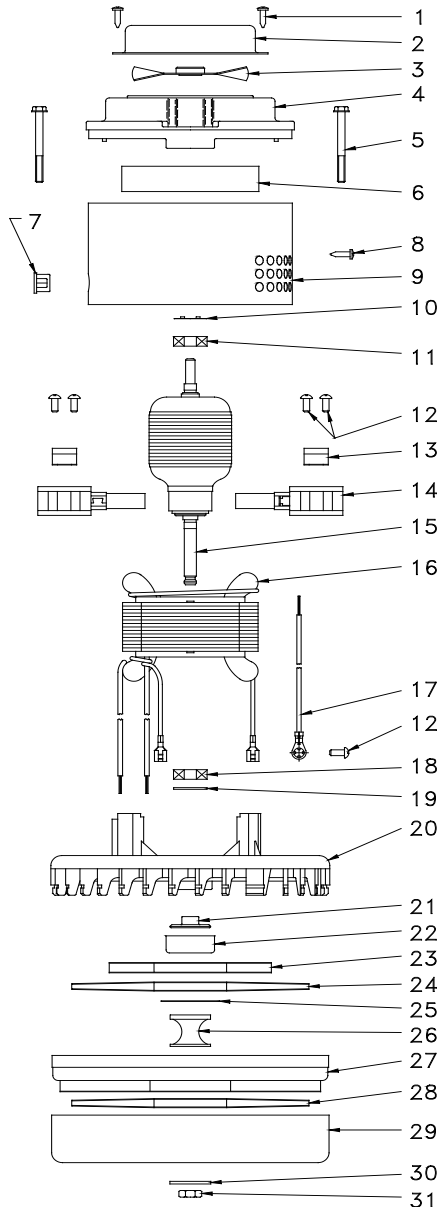


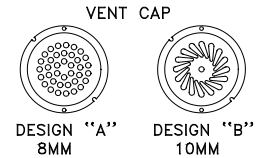
## M115962

A design change from an 8mm to a 10mm armature shaft and fan end bearing system was made effective 4-1-92. Motor with vent cap design "A" reflect the 8mm design, and design "B" reflects the 10mm design.

Please use parts accordingly.



7.2"/183mm diameter, 120V, 2-stage, ball/ball. peripheral discharge, epoxy



Description	Required	Part #	Part #
1 SCREW	2	60-7992	60-7992
2 COVER, VENT CAP	1	40-3773	70-3713
3 FAN	1	XL31325	XL31325
4 BRACKET	1	XL10-6850	XL10-6850
5 SCREW	2	70-7966	70-7966
6 AIR VENT RING	1	30-4409	30-4409
7 GROMMET	1	10-5480	10-5480
8 SCREW	1	60-7992	60-7992
9 BAND	1	6126	6126
10 LOAD SPRING	1	XL0-3528	XL0-3528
10A DISC	1	XL0-6355	XL0-6355
11 BALL BEARING	1	XL60-7600	XL60-7600
12 SCREW	5	50-7971	50-7971
13 CLAMP	2	0-5490	0-5490
14 BRUSH MECHANISM	2	XL33357	XL33357
15 ARMATURE	1	XL215837	XL215837-01
16 FIELD	1	316103-00	316103-00
17 LEAD & TERMINAL	1	39262	39262
18 BALL BEARING	1	XL60-7653	XL60-7680
19 NEOPRENE WASHER	1	XL10-2481	XL10-2494
20 FAN END BRACKET	1	45918-1	45918-1
21 SPACER	1	XL10-2976	XL20-2999
22 SLINGER	1	30-4340	50-4172-1
23 ROTATING FAN	1	XL31282	XL31282-3
24 ROTATING FAN	1	XL31213	XL31213-1
25 WASHER	1	XL20-2268	XL20-2268-1
26 SPACER	1	XL10-2977	XL20-2991
27 STATIONARY FAN	1	XL31360	XL31360
28 ROTATING FAN	1	XL31213	XL31213-1
29 FAN SHELL	1	XL30-4068	XL30-4068
30 WASHER	1	20-2235	30-2288
31 NUT	1	XL7491	XL7491

PARTS SUBJECT TO CHANGE WITHOUT NOTICE.

THIS INFORMATION IS FOR PART IDENTITY ONLY, IT IS NOT TO BE USED AS DISASSEMBLY OR ASSEMBLY INSTRUCTIONS.

REPLACEMENT OF ARMATURE OR FIELD REQUIRES THE REPLACEMENT OF BRUSH MECHANISM.