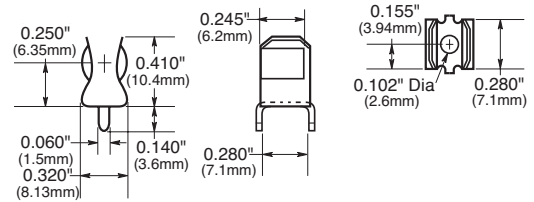


PC Board Fuseclips for 1/4" Diameter Fuses

1A3398 Series

PCB Fuseclips without End Stops with Straight Leads

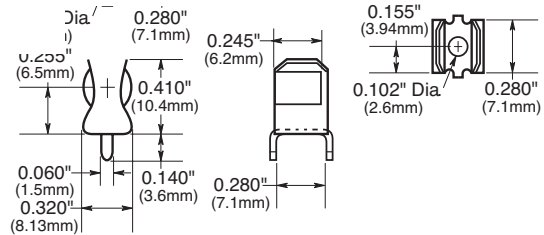
Catalog Numbers	Clip Material	Finish
1A3398-07-R	Cartridge brass	Bright tin



1A1907 Series

PCB Fuseclips with End Stops & Straight Leads

Catalog Numbers	Clip Material*	Finish
1A1907-02	Cartridge brass	None/bright dipped
1A1907-03-R	Beryllium copper*	Bright tin
1A1907-05	Beryllium copper*	Silver
1A1907-06-R	Cartridge brass	Bright tin

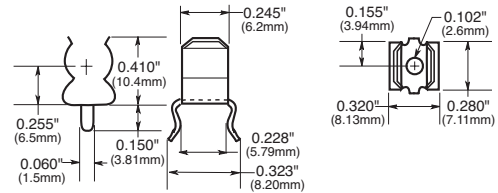


*Beryllium copper recommended for amps higher than 15A.
Data Sheet: 2131

1A4533 Series

PCB Fuseclips without End Stops or Angled Out Leads

Catalog Numbers	Clip Material*	Finish
1A4533-01-R	Beryllium copper*	Bright tin
1A4533-06-R	Cartridge brass	Bright tin

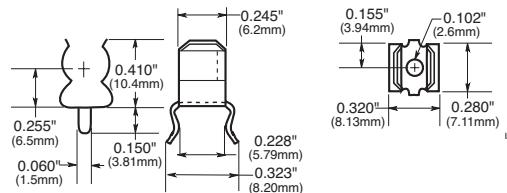


*Beryllium copper recommended for amps higher than 15A.
Data Sheet: 2131

1A4534 Series

PCB Fuseclips with End Stops & Angled Out Leads

Catalog Numbers	Clip Material*	Finish
1A4534-01-R	Beryllium copper*	Bright tin
1A4534-06-R	Cartridge brass	Bright tin

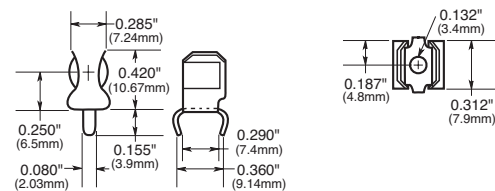


*Beryllium copper recommended for amps higher than 15A.
Data Sheet: 2131

1A1119 Series

Fuseclips with End Stops & Angled In Leads

Catalog Numbers	Clip Material*	Finish
1A1119-04-R	Beryllium copper*	Bright tin
1A1119-05	Beryllium copper*	Silver
1A1119-10-R	Cartridge brass	Bright tin

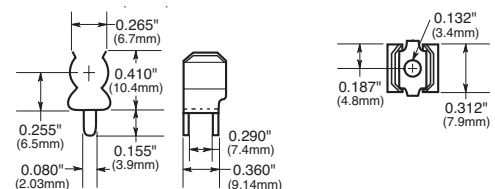


*Beryllium copper recommended for amps higher than 15A.
Data Sheet: 2131

1A1120 Series

PCB Fuseclips without End Stops or Angled In Leads

Catalog Numbers	Clip Material*	Finish
1A1120-02	Cartridge brass	None/bright dipped
1A1120-05	Beryllium copper*	Silver
1A1120-06-R	Beryllium copper*	Bright tin
1A1120-09-R	Cartridge brass	Bright tin



*Beryllium copper recommended for amps higher than 15A.
Data Sheet: 2131