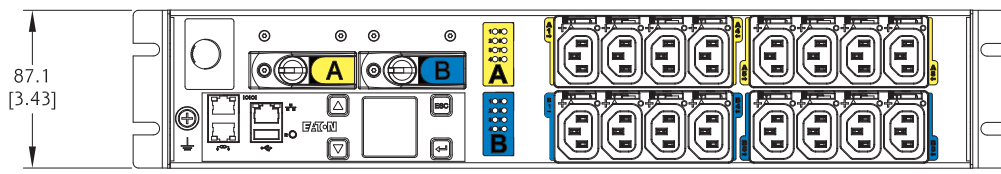
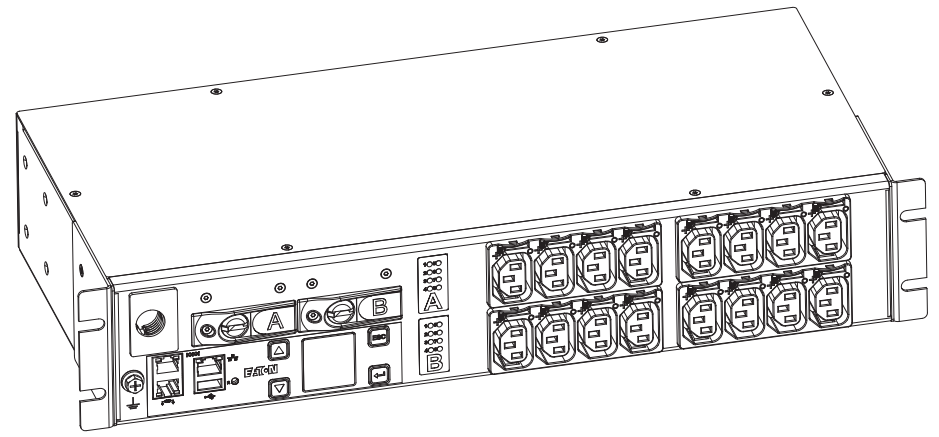
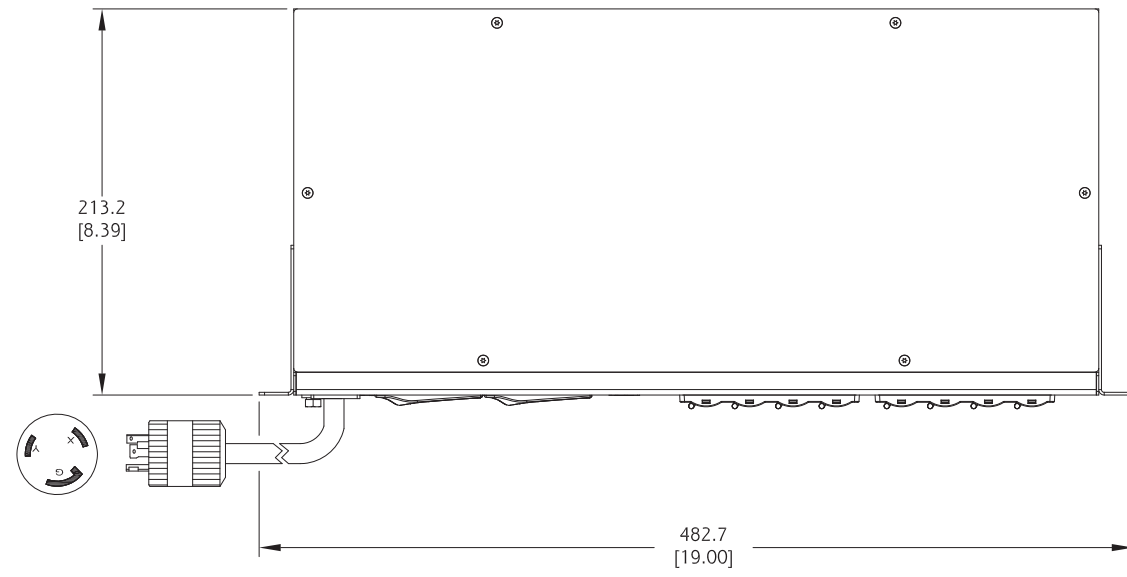
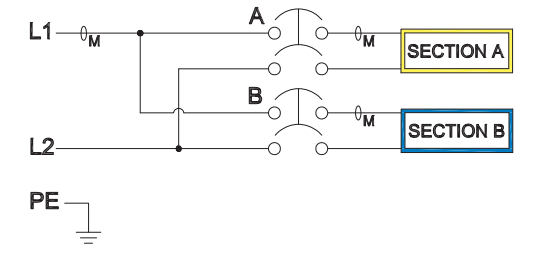


REV	ECO No.	REVISION	DR	CK	AP	DATE
00	NA	RELEASED	R.C			9 MAR 16



EMAU07-10 G3 MANAGED

FUNCTIONALITY	INPUT	OUTPUT	OPERATING TEMPERATURE
CURRENT, POWER AND ENERGY METERING FOR INPUT, BRANCH AND OUTLET; OUTLET SWITCHING	NEMA L6-30 PLUG 10FT 10AWG / 3C POWERCORD	(16) IEC 60320 C13 GRIP	32° TO 140° F 0° TO 60° C
MECHANICAL	INPUT RATING	OUTPUT RATING	CERTIFICATIONS
19.00" (482.7mm) WIDTH 3.43" (87.1mm) HEIGHT 8.39" (213.2mm) DEPTH BLACK CHASSIS	200-240V ~ 2W + PE 24A 50/60Hz	200-240V ~ 10A PER C13 16A MAX PER SECTION 24A MAX TOTAL	
CIRCUIT BREAKERS	FILTER AND SPIKE/SURGE	ACCESSORIES	CONFIGURATION
(2) 20A 2-POLE LISTED	NONE	INCLUDED SPK021 - INSTALLATION INCLUDED SPK013 - NETWORK OPTIONAL EMP001 - ENVIRONMENTAL PROBE	EMA6MT15JDC23AC SERIAL NUMBER _629_



METRIC	THIRD ANGLE PROJECTION	EATON CORPORATION, ELECTRICAL	SEE D
DESCRIPTION: ePDU G3 SPECIFICATION DRAWING FOR EMAU07-10			
DESIGNED BY: RANK CHUANG	DATE: 9 MAR 2016	UNLESS OTHERWISE SPECIFIED TOLERANCES ON DIMENSIONS ARE: ANGLES: $\pm 0.1^\circ$ DECIMALS: 0.X: ± 0.15 X (FOR X < 3); ± 0.2 HOLES: ± 0.13 0.008 ± 0.25 X (FOR X > 3); ± 0.3 DIMENSIONS ARE IN MILLIMETERS (INCHES) AND AFTER PLATING	SCALE: 0.5 DO NOT SCALE DRAWING OR CHANGE MANUALLY
ECO: NA	STATE: RELEASE	PROF NAME: EMA6MT15JDC23AC	REVISION: 00
PRO-ENGINEER GENERATED		REVISION: 00	SHEET: 1 of 1

EATON CORPORATION - CONFIDENTIAL AND PROPRIETARY NOTICES TO PERSONS RECEIVING THIS DOCUMENT AND/OR TECHNICAL INFORMATION THIS DOCUMENT, INCLUDING THE DRAWING AND INFORMATION CONTAINED THEREIN, IS CONFIDENTIAL AND IS THE EXCLUSIVE PROPERTY OF EATON CORPORATION, AND IS HEREBY FOR LOAN AND SUBJECT TO RECALL BY EATON AT ANY TIME. BY TAKING POSSESSION OF THIS DOCUMENT, THE RECIPIENT ACKNOWLEDGES AND AGREES THAT THIS DOCUMENT CANNOT BE USED IN ANY MANNER UNPERMITTED BY EATON, AND THAT NO PORTION OF THIS DOCUMENT MAY BE COPIED OR OTHERWISE REPRODUCED WITHOUT THE PRIOR WRITTEN CONSENT OF EATON. IN THE CASE OF CONFLICTING CONTRACTUAL PROVISIONS, THIS NOTICE SHALL GOVERN THE STATUS OF THIS DOCUMENT. © 2008 Eaton Corporation - All Rights Reserved.