

## Applications:

- T-bar 2x2 and 4x2 drop ceiling types
- Marine interior
- Office
- Corridor

## Features:

- Integral support tabs to allow for ceiling suspension
- Corrosion-resistant housing and frame
- Multi-voltage electronic ballast resistant to brownouts or voltage and frequency fluctuations
- Filter tube options allow colored lamps to operate on a separate circuit for darken ship mode
- 3- and 4-lamp models are provided with two ballasts for independent switching or color effects
- Parabolic louver option for glare reduction
- Tool-less entry for easy relamping
- Reversible hinged lens frame with captive knurled screws
- Side access plate allows for ease of installation
- Optional self-contained emergency battery back-up ballasts with test switch
- Optional long life T5 lamps available upon request (contact factory)

## Certifications and compliances:

- UL1598A – Luminaires for Marine Vessels
- UL924 – Emergency Lighting Equipment
- Conforms to IP52
- Marine Inside Drip Proof Type
- ABS

## Standard materials and finishes:

- Housing – Type 5052H32 copper-free aluminum with an electrostatically applied white polyester powder coat finish
- Lens frame – Type 6061T6 aluminum with an electrostatically applied white polyester powder coat finish
- Lens – prismatic DR acrylic
- Reflector – Type 5052H32 copper-free aluminum with an electrostatically applied white polyester powder coat finish; minimum 90% reflectance
- Lamp holder – polycarbonate

## Photometrics:

- Refer to [www.eaton.com](http://www.eaton.com) (under the Resources tab of each product family) for specific photometric IES files



## Technical specifications:

- Entries – four 1/2" and four 3/4" NPT knockouts
- Lamp holder – twist lock lamp holders for bi-pin lamps and spring loaded for HO lamps
- Terminal block – 2-pole terminal block located on side access plate
- Ballast – 120-277V, 50/60 Hz electronic, except F20 and F40T12 bi-pin, which are 120V, 60 Hz

Watts	Ballast / socket type	ANSI lamp code	Starting temperature	Max. ambient °C	Supply wire °C
17	T8 bi-pin G13	F17-T8	0°F (-18°C)	55	90
32	T8 bi-pin G13	F32-T8	-20°F (-29°C)	55	90
14/28	T5 mini bi-pin G5	F14/F28-T5	0°F (-18°C)	55	90
24/54	T5HO mini bi-pin G5	F24/F54-T5HO	-20°F (-29°C)	55	90
35/60	T12HO RDC R17d	F24/F48-T12HO	-20°F (-29°C)	40	90

- Emergency battery back-up ballast – optional, self-contained 90 minute minimum for all lamp types; 120 minute minimum for F32T8 one lamp; starting temperature 32°F/0°C

## Mounting options:

- Recessed ceiling mount lay-in, for 2x2 or 2x4, T-bar system

## Options:

Description	Suffix
• Emergency battery back-up ballast, one lamp, 277V max., test switch.....	<b>EMT2<sup>A</sup></b>
• Emergency battery back-up ballast, high lumen, one lamp, 277V max., test switch.....	<b>EMT3<sup>A</sup></b>
• Lamps.....	<b>L<sup>B</sup></b>
• Long life lamps (F54T5HO only).....	<b>LL<sup>B</sup></b>
• 220V, 50 Hz ballast (T12 bi-pin only).....	<b>225</b>
• 220V, 60 Hz ballast (T12 bi-pin only).....	<b>226</b>
• 277V, 60 Hz ballast (T12 bi-pin only).....	<b>276</b>
• Parabolic louver, silver.....	<b>PAR</b>
• Red filter tube with separate ballast (one lamp).....	<b>RV-1<sup>C</sup></b>
• Red filter tube (all lamps).....	<b>RV<sup>C</sup></b>
• Blue filter tube with separate ballast (one lamp).....	<b>BV-1<sup>C</sup></b>
• Blue filter tube (all lamps).....	<b>BV<sup>C</sup></b>
• Dimming ballast.....	<b>DIM</b>

Not available for F20T12 or T12HO

<sup>A</sup>For T5 and T5HO, EM ballast is fixed voltage, 120 or 277V, 50/60 Hz.

<sup>B</sup>Lamps are not included unless option 'L' or 'LL' is specified.

<sup>C</sup>Not available in 24W, 35W, 54W or 60W.

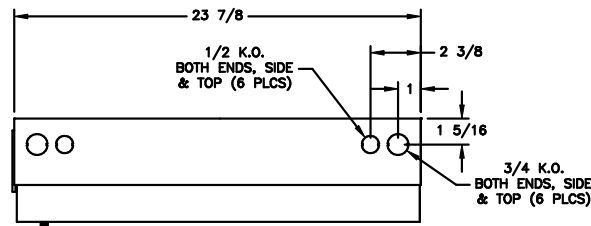
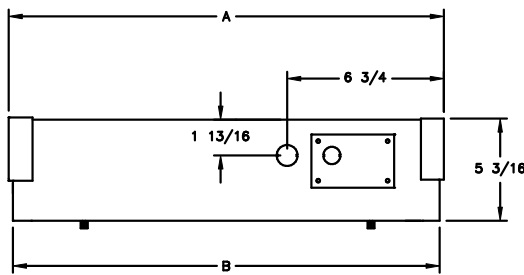
## Ordering information:

Cat. #	Nominal length	Lamp type	No. of lamps / nominal lamp wattage	Weight (lbs.)
FT214	2 ft. x 2 ft.	F14T5	2 x 14W	11.0
FT314	2 ft. x 2 ft.	F14T5	3 x 14W	13.5
FT414	2 ft. x 2 ft.	F14T5	4 x 14W	14.0
FT217	2 ft. x 2 ft.	F17T8	2 x 17W	11.0
FT317	2 ft. x 2 ft.	F17T8	3 x 17W	13.5
FT417	2 ft. x 2 ft.	F17T8	4 x 17W	14.0
FT220	2 ft. x 2 ft.	F20T12	2 x 20W	12.0
FT320	2 ft. x 2 ft.	F20T12	3 x 20W	15.5
FT420	2 ft. x 2 ft.	F20T12	4 x 20W	16.0
FT224	2 ft. x 2 ft.	F24T5HO	2 x 24W	11.0
FT324	2 ft. x 2 ft.	F24T5HO	3 x 24W	13.5
FT424	2 ft. x 2 ft.	F24T5HO	4 x 24W	14.0
FT228	2 ft. x 4 ft.	F28T5	2 x 28W	19.5
FT328	2 ft. x 4 ft.	F28T5	3 x 28W	22.0
FT428	2 ft. x 4 ft.	F28T5	4 x 28W	22.5
FT232	2 ft. x 4 ft.	F32T8	2 x 32W	19.5
FT332	2 ft. x 4 ft.	F32T8	3 x 32W	22.0
FT432	2 ft. x 4 ft.	F32T8	4 x 32W	22.5
FT235	2 ft. x 2 ft.	F24T12HO	2 x 35W	16.5
FT335	2 ft. x 2 ft.	F24T12HO	3 x 35W	25.0
FT435	2 ft. x 2 ft.	F24T12HO	4 x 35W	25.5
FT240	2 ft. x 4 ft.	F40T12ES	2 x 34W	20.5
FT340	2 ft. x 4 ft.	F40T12ES	3 x 34W	24.0
FT440	2 ft. x 4 ft.	F40T12ES	4 x 34W	24.5
FT254	2 ft. x 4 ft.	F54T5HO	2 x 54W	19.5
FT354	2 ft. x 4 ft.	F54T5HO	3 x 54W	22.0
FT454	2 ft. x 4 ft.	F54T5HO	4 x 54W	22.5
FT260	2 ft. x 4 ft.	F48T12HO	2 x 60W	25.5
FT360	2 ft. x 4 ft.	F48T12HO	3 x 60W	34.0
FT460	2 ft. x 4 ft.	F48T12HO	4 x 60W	34.5

## Accessories (ordered separately):

Cat. #	Description	Cat. #	Description
FX5350	Ballast 120-277 VAC, 50/60 Hz, 1 x 14W	FX2004	Lens, 2 ft. x 2 ft.
FX5174	Ballast 120-277 VAC, 50/60 Hz, 1 x 17W	FX2005	Lens, 2 ft. x 4 ft.
FX5307	Ballast 120-277 VAC, 50/60 Hz, 1 x 24W	FX4060	Lamp holder, locking (17/20/32/40W)
FX5350	Ballast 120-277 VAC, 50/60 Hz, 1 x 28W	FX4064	Lamp holder, T5 & T5HO (14/28W & 24/54W)
FX5221	Ballast 120-277 VAC, 50/60 Hz, 1 x 32W	FX4004	Lamp holder, stationary (35/60W)
FX5334	Ballast 120-277 VAC, 50/60 Hz, 1 x 35W	FX4005	Lamp holder, spring loaded (35/60W)
FX5305	Ballast 120-277 VAC, 50/60 Hz, 1 x 54W	FX4004SET	Lamp holder, set (1 ea. FX4004, FX4005)
FX5334	Ballast 120-277 VAC, 50/60 Hz, 1 x 60W	FX3001	Terminal block, 2-pole
FX5350	Ballast 120-277 VAC, 50/60 Hz, 2 x 14W	CX3070	Terminal block, 4-pole
FX5340	Ballast 120-277 VAC, 50/60 Hz, 2 x 17W	FX2193RED	Filter tube, red 17W T8
FX5307	Ballast 120-277 VAC, 50/60 Hz, 2 x 24W	FX2192RED	Filter tube, red 20W T12
FX5350	Ballast 120-277 VAC, 50/60 Hz, 2 x 28W	FX2195RED	Filter tube, red 32W T8
FX5340	Ballast 120-277 VAC, 50/60 Hz, 2 x 32W	FX2194RED	Filter tube, red 34W T12
FX5334	Ballast 120-277 VAC, 50/60 Hz, 2 x 35W	FX2192BLU	Filter tube, blue 20W T12
FX5305	Ballast 120-277 VAC, 50/60 Hz, 2 x 54W		
FX5338	Ballast 120-277 VAC, 50/60 Hz, 2 x 60W		
FX5009	Ballast 120V, 60 Hz, 1 x 20W		
FX5326	Ballast 120V, 60 Hz, 1 x 34W		
FX5326	Ballast 120V, 60 Hz, 1 x 40W		
FX5001	Ballast 120V, 60 Hz, 2 x 20W		
FX5004	Ballast 120V, 60 Hz, 2 x 34W		
FX5004	Ballast 120V, 60 Hz, 2 x 40W		
FX3573	Lamp, 14W, F14T5		
FX3574	Lamp, 28W, F28T5		
FX3568	Lamp, 24W, F24T5HO		
FX3567	Lamp, 54W, F54T5HO		
FX3577	Lamp, 54W, long life, F54T5HO		
FX3528	Lamp, 17W, F17T8		
FX3527	Lamp, 32W, F32T8		
FX3506	Lamp, 20W, F20T12		
FX3507	Lamp, 35W, F24T12HO		
FX3504ES	Lamp, 34W, F40T12ES		
FX3505	Lamp, 60W, F48T12HO		

## Dimensions (in inches):



SIDE VIEW

END VIEW

	A	B
14W, 17W, 20W, 24W, 35W	24 <sup>1</sup> / <sub>8</sub>	23 <sup>3</sup> / <sub>4</sub>
28W, 32W, 40W, 54W, 60W	48 <sup>1</sup> / <sub>8</sub>	47 <sup>3</sup> / <sub>4</sub>