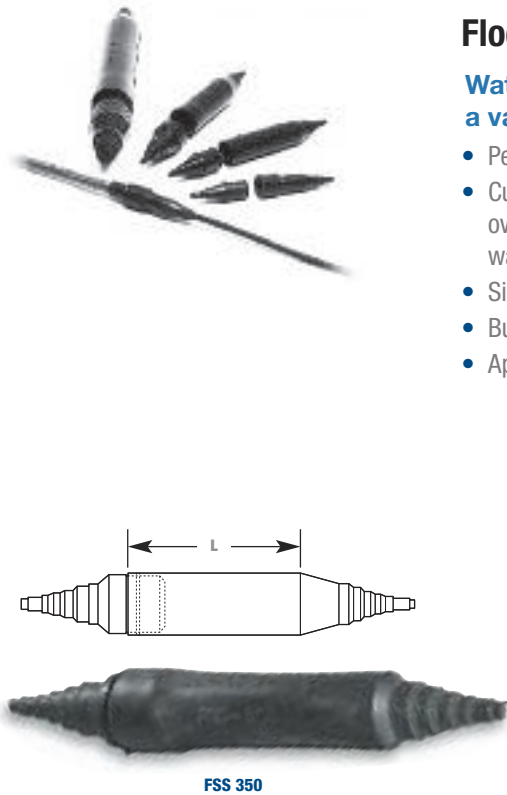


Insulating Covers and End Caps

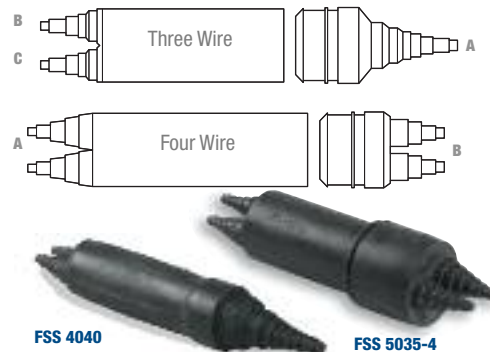
Flood-Seal™ Insulating Covers

Watertight, fully insulated covers for a variety of splice applications

- Perfect for copper or aluminum conductors ranging from #14 AWG to 1500 kcmil
- Cut the proper cable rings at each end of the Twin-Tap cover and slide cover halves over cables. The cover halves are mated, enclosing the compression tap in a waterproof seal.
- Significantly reduce labor and material cost of splice preparation
- Built for heavy-duty loads
- Approved by the Federal government for utility use



FSS 350



FSS 4040

FSS 5035-4

FSS Series



Cat. No.	Copper Conductor Range	Aluminum Conductor Range	Cable Insulation Diameter Range	L
FSS 20	#14-2/0	#14-2/0	0.150-0.600	2-1/4
FSS 20 L				3-5/8
FSS 350	#14-350	#14-350	0.150-0.980	4-7/16
FSS 350 L				7-1/2
FSS 500	#14-500	#14-500*	0.150-1.175	4-7/16
FSS 500 L		#14-500		7-5/8
FSS 1000 S	#2-1000	#2-750	0.370-1.600	5
FSS 1000		#2-1000		10
FSS 1000-16				13-9/16
FSS 1000 L				18-1/8

* For 500 kcmil aluminum, remove liner from cap.

Twin-Tap*



Cat. No.	Conductor Range		
	A	B	C
FSS 1010-4	#14–1/0	#14–1/0	–
FSS 4010-4	#14–250		
FSS 4010-4 L	#8–250		
FSS 4040	#14–500	#14–250	#14–250
FSS 4040 L		#8–250	#14–2/0
FSS 5010		#14–2/0	
FSS 5035	#2–1500	#14–500	#14–400
FSS 5035-4	#14–500	#14–400	–

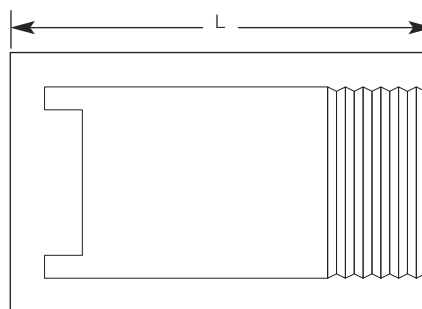
* Not UL Listed.

Insulating Covers and End Caps

Flood-Seal™ Cable End Caps

Cap off your cable with our cable end caps 600 V cable application

- Enable each cap to fit wide decimal range
- Saves money
- Unaffected by sun, rain or soil
- Prevents accidental removal
- Doesn't require tape, compound or heat source for fitting
- Dielectrically tested to ANSI C119.1 requirement (2,200 V AC for one minute)



Cable End Caps — 660 V Cable Application

Cat. No.	L	Size Cables				Cables Range					
		Decimal Range		MM		Concentric		Compressed		Compact	
		Min.	Max.	Min.	Max.	Min.	Max.	Min.	Max.	Min.	Max.
CAP 35	3/4	0.250	0.425	6.4	10.8	#6	#2	#6	#2	#6	#2
CAP 45	7/8	0.360	0.562	9.1	14.3	#2	1/0	#2	1/0	#2	2/0
CAP 55	1	0.455	0.626	11.6	15.9	#1	3/0	#1	3/0	#1	3/0
CAP 65	1-1/4	0.575	0.750	14.6	19.0	2/0	250	3/0	300	3/0	300
CAP 85	1-3/8	0.720	0.973	18.3	24.7	250	400	350	400	250	400
CAP 95*	1-7/8	0.970	1.185	24.6	30.1	500	700	500	750	600	800
CAP 105*	2-1/8	1.120	1.400	28.4	35.6	750	1000	750	1000	800	1000
CAP 125*	2-3/8	1.200	1.475	30.5	37.5						
CAP 130*	2-1/2	1.390	1.650	35.3	41.9	1233.7	1250	—	—	—	—
CAP 135*	2-5/8	1.465	1.750	37.2	44.5	1500	1578.8				
CAP 145*	2-7/8	1.650	1.925	41.9	49.0	1973.5	2000				
CAP 150*	3	1.860	2.230	47.2	56.6	Fits High-Voltage Cable Only					
CAP 155*	3	2.150	2.500	54.6	63.5						

* Indicates cap with internal protective button.
Conductor ranges shown are for outer diameter over cable insulation.
For cable sizes not listed, please consult your Thomas & Betts representative.