

Hub City™ Worm Gear Drives

Single Reduction

PowerCubeX® Worm Speed Reducer Catalog Ratings

Series 380

SERIES	INPUT RPM	RATIO	OUTPUT RPM	CONVENTIONAL OIL				PAO SYNTHETIC OIL				PAG SYNTHETIC OIL				
				MECH. INPUT HP	EFF. %	MECH. OUTPUT TORQUE	THERMAL INPUT HP	THERMAL OUTPUT TORQUE	MECH. INPUT HP	EFF. %	OUTPUT TORQUE	THERMAL INPUT HP	THERMAL OUTPUT TORQUE	INPUT HP	EFF. %	OUTPUT TORQUE
380	2500	5	500	22.9	91.7	2665	11.0	1272	22.9	94.5	2749	13.3	1590	22.9	97.5	2834
		10	250	14.4	88.2	3223	6.77	1506	14.4	90.8	3345	8.23	1883	14.4	93.8	3465
		15	167	10.2	85.0	3294	4.70	1511	10.2	87.6	3418	5.70	1889	10.2	90.4	3562
		20	125	8.52	83.2	3607	4.00	1679	8.52	85.7	3743	4.86	2099	8.52	88.4	3900
		30	83.3	5.72	77.6	3352	2.58	1516	5.72	79.9	3517	3.14	1895	5.72	82.5	3663
		40	62.5	4.83	74.7	3635	2.23	1679	4.83	76.9	3814	2.71	2100	4.83	79.4	3973
		50	50.0	3.86	71.5	3477	1.97	1777	3.86	73.6	3647	2.39	2221	3.86	76.0	3799
	60	41.7	3.17	68.2	3273	1.89	1945	3.17	70.2	3434	2.29	2431	3.17	72.5	3596	
	1750	5	350	20.0	89.9	3230	10.1	1631	20.0	92.7	3332	12.2	2039	20.0	95.6	3435
		10	175	12.6	86.5	3907	6.20	1931	12.6	89.7	4054	7.47	2414	12.6	93.0	4200
		15	117	8.87	83.3	3993	4.30	1937	8.87	86.5	4143	5.18	2422	8.87	90.1	4317
		20	87.5	7.44	81.6	4372	3.66	2153	7.44	84.7	4537	4.41	2691	7.44	88.2	4727
		30	58.3	5.00	75.4	4063	2.39	1943	5.00	79.1	4263	2.84	2429	5.00	82.4	4440
		40	43.8	4.22	72.5	4406	2.06	2153	4.22	76.0	4623	2.46	2691	4.22	79.2	4816
		50	35.0	3.37	69.4	4214	1.82	2278	3.37	72.9	4421	2.17	2847	3.37	75.9	4605
	60	29.2	2.77	66.2	3967	1.74	2493	2.77	69.5	4162	2.07	3117	2.77	72.8	4359	
	1170	5	234	16.5	89.0	4040	8.58	2093	16.5	91.9	4169	8.23	2617	16.5	94.7	4298
		10	117	10.3	85.1	4817	5.39	2512	10.3	88.3	4998	6.49	3140	10.3	91.5	5179
		15	78.0	7.44	81.6	4990	3.91	2622	7.44	84.7	5180	4.71	3278	7.44	88.2	5394
		20	58.5	6.27	79.6	5468	3.41	2975	6.27	82.6	5675	4.11	3719	6.27	86.0	5911
		30	39.0	4.24	72.6	5060	2.26	2694	4.24	76.1	5309	2.69	3367	4.24	79.3	5530
		40	29.3	3.61	69.3	5486	2.02	3060	3.61	72.7	5756	2.40	3825	3.61	75.7	5995
		50	23.4	2.90	65.9	5236	1.91	3444	2.90	69.1	5493	2.27	4305	2.90	72.0	5722
	60	19.5	2.38	62.4	4890	1.66	3408	2.38	65.5	5132	1.98	4260	2.38	68.6	5374	
100	5	20.0	3.11	82.3	8065	THERMAL EQUALS MECHANICAL	3.11	85.0	8322	THERMAL EQUALS MECHANICAL	3.11	87.6	8580			
	10	10.0	1.94	75.6	9260		1.94	78.5	9806		1.94	81.3	9957			
	15	6.7	1.50	69.6	9790		1.50	72.2	10160		1.50	75.2	10580			
	20	5.0	0.95	66.3	7962		0.95	68.8	8264		0.95	71.7	8608			
	30	3.3	0.94	55.8	9905		0.94	58.6	10390		0.94	61.0	10820			
	40	2.5	0.61	51.6	7990		0.61	54.1	8384		0.61	56.4	8734			
	50	2.0	0.41	47.6	6100		0.41	49.9	6401		0.41	52.0	6667			
	60	1.7	0.30	43.8	4890		0.30	45.9	5132		0.30	48.1	5374			

ADDITIONAL RATINGS FOR OTHER INPUT SPEEDS ARE AVAILABLE AT WWW.REGALBELOIT.COM

OVERHUNG LOAD AND THRUST LOAD INFORMATION

OVERHUNG LOAD - LOW SPEED SHAFT —

MODELS 381 AND 384 1,600 LBS. AT CENTER POINT OF SHAFT EXTENSION.

MODELS 382 AND 385 NOT APPLICABLE.

MODELS 387 AND 388 — OHL* 1,970 LBS., TO* THRUST OUT 1,950 LBS. AND TI* THRUST IN 1,500 LBS.

THRUST* UP OR DOWN 1,500 LBS.

*OHL AND THRUST VALUES SHOWN ARE INDEPENDENT FUNCTIONS AND CANNOT BE APPLIED SIMULTANEOUSLY.

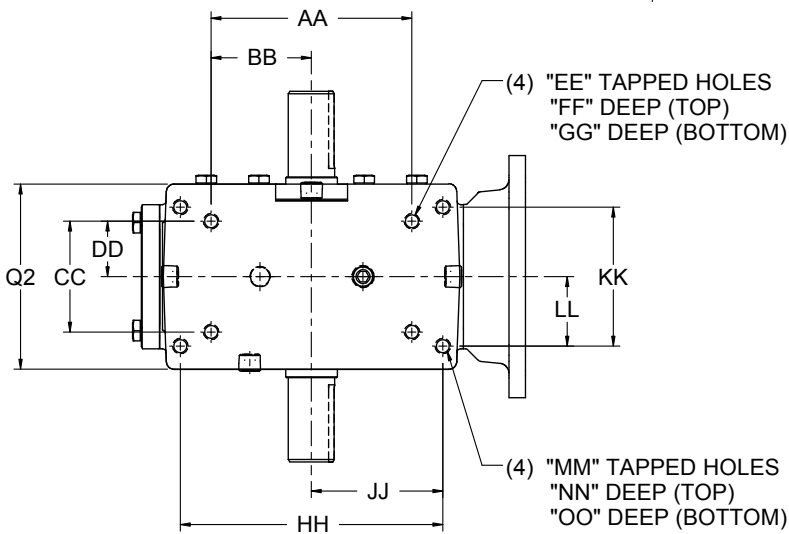
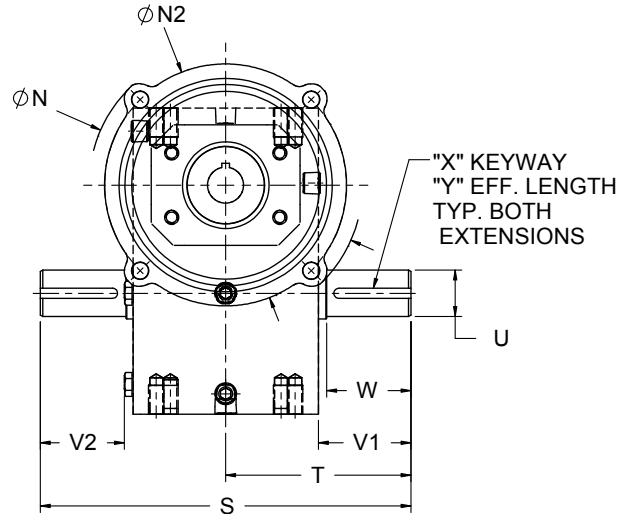
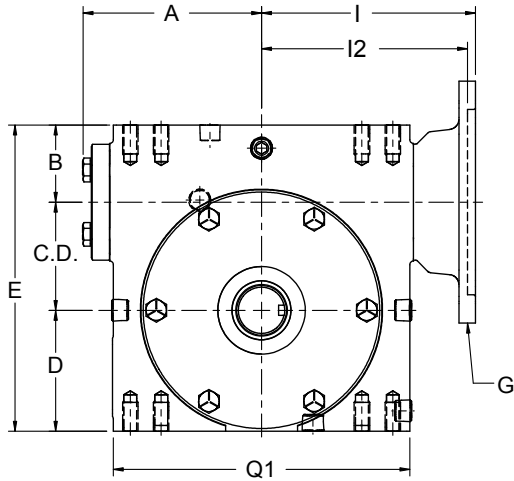
REFER APPLICATIONS WITH COMBINED OHL AND THRUST TO REGAL CUSTOMER SERVICE DEPARTMENT.

OUTPUT TORQUE VALUES SHOWN ARE INCH-POUNDS (IN-LB).

Hub City™ Worm Gear Drives

Single Reduction Models

134, 154, 184, 214, 244, 264, 304, 324, 384, 424, 454, 524, GW604



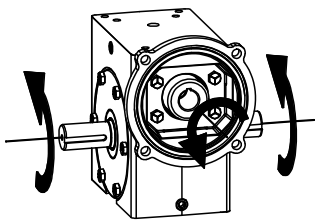
SPECIAL, METRIC AND SAE HYDRAULIC INPUT FLANGES AVAILABLE.
CONSULT FACTORY FOR COMPLETE SPECIFICATIONS.

ALL GW MODELS ARE FAN COOLED
REFER TO FAN DETAILS ON NEXT PAGE.

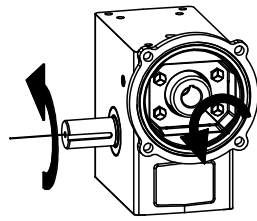
FOR LUBRICATION AND INSTALLATION INSTRUCTIONS -
REFER TO SECTION M

DIMENSIONS SHOWN ARE FOR REFERENCE ONLY.
DOWNLOAD AVAILABLE CAD MODELS AT:
WWW.HUBCITYINC.COM

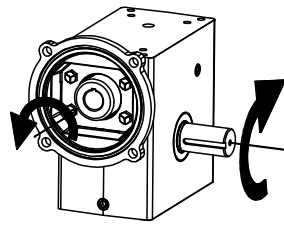
Standard Styles Available



STYLE "A"



STYLE "B"



STYLE "C"

CONSULT FACTORY FOR VERTICAL SHAFT LUBRICATION RECOMMENDATIONS.
INPUT SHAFT CAN BE ROTATED IN EITHER DIRECTION.

Hub City™ Worm Gear Drives

Single Reduction Models

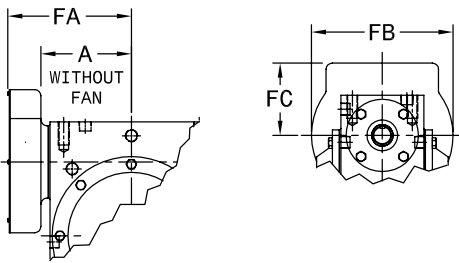
134, 154, 184, 214, 244, 264, 304, 324, 384, 424, 454, 524, GW604

MODEL	C.D.	A	B	D	E	Q1	Q2
134	1.334	2.61	1.186	1.562	4.082	4.12	3.12
154	1.541	3.14	1.928	1.906	5.375	4.88	3.44
184	1.751	3.23	1.374	1.875	5.000	5.16	3.44
214	2.064	3.61	1.500	2.437	6.000	5.88	4.12
244	2.376	3.77	2.061	2.500	6.937	6.12	4.06
264	2.626	4.33	1.874	2.938	7.438	7.20	4.50
304	3.001	4.84	2.624	3.250	8.875	8.12	5.25
324	3.251	5.28	2.124	3.250	8.625	8.62	5.20
384	3.751	4.90	2.374	3.937	10.062	9.60	5.62
424	4.251	6.10	2.686	4.438	11.375	10.25	6.13
454	4.501	5.23	2.499	4.625	11.625	9.25	4.63
524	5.168	5.98	2.624	5.375	13.167	10.75	5.06
GW604	6.000	N/A	4.000	6.500	16.500	14.25	8.13

MODEL	S	T	U	V1	V2	W	X	Y
134	6.50	3.25	.625/.624	1.69	1.53	1.60	3/16 X 3/32	1.38
154	8.62	4.31	.750/.7485	2.11	1.90	2.08	3/16 X 3/32	1.51
184	7.00	3.50	.750/.749	1.78	1.57	1.54	3/16 X 3/32	1.41
214	8.50	4.25	.875/.874	2.19	1.98	1.95	3/16 X 3/32	1.83
244	10.28	5.14	1.125/1.1235	2.66	2.44	2.62	1/4 x 1/8	1.76
264	9.00	4.50	1.250/1.249	2.25	2.04	N/A	1/4 x 1/8	1.85
304	13.50	6.75	1.250/1.2485	3.60	3.36	3.57	1/4 X 1/8	2.26
324	10.88	5.44	1.375/1.374	2.84	2.62	2.75	5/16 X 5/32	2.31
384	13.38	6.69	1.500/1.499	3.88	N/A	N/A	3/8 X 3/16	3.16
424	16.24	8.12	1.875/1.8735	4.50	4.21	4.47	1/2 X 1/4	3.06
454 **	14.50	7.25	1.625/1.624	4.18	N/A	3.90	3/8 X 3/16	3.28
524 ***	15.62	7.81	1.750/1.749	4.47	N/A	4.17	3/8 X 3/16	3.50
GW604	20.00	10.00	2.500	4.65	4.65	N/A	5/8 X 5/16 P&W	4.00

** ALSO AVAILABLE WITH 1.750/1.749 (U) DIAMETER OUTPUT SHAFT. CONSULT FACTORY.
 *** ALSO AVAILABLE WITH 2.000/1.999 (U) DIAMETER OUTPUT SHAFT. CONSULT FACTORY.

Fan Detail for Model GW604



MODEL	A	FA	FB	FC
GW604	N/A	11.13	9.50	4.00

ALL GW MODELS ARE FAN COOLED.

MODEL	G	I	I2	N	N2		
134	48CZ	3.46	N/A	4.36	3.87		
	56C			6.63	6.50		
154	48CZ	3.99	N/A	4.36	3.87		
	56C			6.63	6.50		
	143TC						
184	48CZ	4.09	N/A	4.36	3.87		
	56C			6.63	6.50		
	143TC						
214	48CZ	4.46	N/A	4.36	3.87		
	56C			6.63	6.50		
	143TC						
244	56C	4.63	N/A	6.50	6.50		
	143TC						
	182TC						
264	56C	5.19	N/A	6.50	6.50		
	143TC						
	182TC						
304	56C	5.95	N/A	6.50	6.50		
	143TC						
	182TC			6.15	9.00	9.00	
	213TC			6.71			
324	56C	6.14	N/A	6.50	6.50		
	143TC						
	182TC			6.34	9.00	9.00	
	213TC			6.90			
384	56C	6.50	N/A	6.50	6.50		
	143TC						
	182TC						
424	56C	6.45	N/A	6.50	6.50		
	143TC						
	182TC			7.21	9.00	9.00	
	213TC						7.77
	254TC						
454	56C	6.75	N/A	6.50	6.50		
	143TC						
	182TC			6.75	9.00	9.00	
	213TC						
524 *	182TC	N/A	7.50	9.00	9.00		
	213TC						
	254TC						
GW604	56C	10.45	N/A	6.50	6.50		
	143TC						
	182TC			9.33	9.00	9.00	
	213TC						
	254TC						9.94

* 56C & 143TC FLANGES AVAILABLE AS MODIFIED STANDARDS

MODEL	AA	BB	CC	DD	EE	FF	GG	HH	JJ	KK	LL	MM	NN	OO	Wt. Lbs.
134	2.250	1.125	1.625	0.813	1/4 UNC	0.50	0.50	3.250	1.625	2.000	1.000	5/16 UNC	0.50	0.50	12
154	4.188	2.094	2.750	1.375	5/16 UNC	0.63	0.63	N/A	N/A	N/A	N/A	N/A	N/A	N/A	16
184	3.125	1.563	1.625	0.813	1/4 UNC	0.50	0.50	4.188	2.094	2.750	1.375	5/16 UNC	0.63	0.63	16
214	4.000	2.000	2.000	1.000	3/8 UNC	0.50	0.70	5.000	2.500	2.875	1.438	3/8 UNC	0.70	0.70	25
244	5.000	2.500	2.875	1.438	3/8 UNC	0.69	0.69	N/A	N/A	N/A	N/A	N/A	N/A	N/A	38
264	4.875	2.438	2.688	1.344	3/8 UNC	0.70	0.70	6.375	3.188	3.375	1.688	3/8 UNC	0.70	0.70	38
304	7.000	3.500	4.000	2.000	7/16 UNC	0.88	0.88	N/A	N/A	N/A	N/A	N/A	N/A	N/A	61
324	6.250	3.125	2.750	1.375	1/2 UNC	0.75	0.75	7.500	3.750	4.000	2.000	7/16 UNC	0.88	0.88	67
384	6.875	3.438	3.000	1.500	1/2 UNC	0.94	1.00	8.500	4.250	4.750	2.375	1/2 UNC	1.00	1.00	90
424	8.500	4.250	5.000	2.500	5/8 UNC	1.00	1.00	N/A	N/A	N/A	N/A	N/A	N/A	N/A	112
454	8.125	4.063	3.250	1.625	5/8 UNC	0.88	1.13	N/A	N/A	N/A	N/A	N/A	N/A	N/A	112
524	9.500	4.750	3.750	1.875	5/8 UNC	1.00	1.25	N/A	N/A	N/A	N/A	N/A	N/A	N/A	138
GW604	12.750	6.375	6.380	3.190	5/8 UNC	1.00	1.00	N/A	N/A	N/A	N/A	N/A	N/A	N/A	324