

Hub City™ Worm Gear Drives

Single Reduction

PowerCubeX® Worm Speed Reducer Catalog Ratings

Series 380

SERIES	INPUT RPM	RATIO	OUTPUT RPM	CONVENTIONAL OIL				PAO SYNTHETIC OIL				PAG SYNTHETIC OIL				
				MECH. INPUT HP	EFF. %	MECH. OUTPUT TORQUE	THERMAL INPUT HP	THERMAL OUTPUT TORQUE	MECH. INPUT HP	EFF. %	OUTPUT TORQUE	THERMAL INPUT HP	THERMAL OUTPUT TORQUE	INPUT HP	EFF. %	OUTPUT TORQUE
380	2500	5	500	22.9	91.7	2665	11.0	1272	22.9	94.5	2749	13.3	1590	22.9	97.5	2834
		10	250	14.4	88.2	3223	6.77	1506	14.4	90.8	3345	8.23	1883	14.4	93.8	3465
		15	167	10.2	85.0	3294	4.70	1511	10.2	87.6	3418	5.70	1889	10.2	90.4	3562
		20	125	8.52	83.2	3607	4.00	1679	8.52	85.7	3743	4.86	2099	8.52	88.4	3900
		30	83.3	5.72	77.6	3352	2.58	1516	5.72	79.9	3517	3.14	1895	5.72	82.5	3663
		40	62.5	4.83	74.7	3635	2.23	1679	4.83	76.9	3814	2.71	2100	4.83	79.4	3973
		50	50.0	3.86	71.5	3477	1.97	1777	3.86	73.6	3647	2.39	2221	3.86	76.0	3799
	60	41.7	3.17	68.2	3273	1.89	1945	3.17	70.2	3434	2.29	2431	3.17	72.5	3596	
	1750	5	350	20.0	89.9	3230	10.1	1631	20.0	92.7	3332	12.2	2039	20.0	95.6	3435
		10	175	12.6	86.5	3907	6.20	1931	12.6	89.7	4054	7.47	2414	12.6	93.0	4200
		15	117	8.87	83.3	3993	4.30	1937	8.87	86.5	4143	5.18	2422	8.87	90.1	4317
		20	87.5	7.44	81.6	4372	3.66	2153	7.44	84.7	4537	4.41	2691	7.44	88.2	4727
		30	58.3	5.00	75.4	4063	2.39	1943	5.00	79.1	4263	2.84	2429	5.00	82.4	4440
		40	43.8	4.22	72.5	4406	2.06	2153	4.22	76.0	4623	2.46	2691	4.22	79.2	4816
		50	35.0	3.37	69.4	4214	1.82	2278	3.37	72.9	4421	2.17	2847	3.37	75.9	4605
	60	29.2	2.77	66.2	3967	1.74	2493	2.77	69.5	4162	2.07	3117	2.77	72.8	4359	
	1170	5	234	16.5	89.0	4040	8.58	2093	16.5	91.9	4169	8.23	2617	16.5	94.7	4298
		10	117	10.3	85.1	4817	5.39	2512	10.3	88.3	4998	6.49	3140	10.3	91.5	5179
		15	78.0	7.44	81.6	4990	3.91	2622	7.44	84.7	5180	4.71	3278	7.44	88.2	5394
		20	58.5	6.27	79.6	5468	3.41	2975	6.27	82.6	5675	4.11	3719	6.27	86.0	5911
		30	39.0	4.24	72.6	5060	2.26	2694	4.24	76.1	5309	2.69	3367	4.24	79.3	5530
		40	29.3	3.61	69.3	5486	2.02	3060	3.61	72.7	5756	2.40	3825	3.61	75.7	5995
		50	23.4	2.90	65.9	5236	1.91	3444	2.90	69.1	5493	2.27	4305	2.90	72.0	5722
	100	60	19.5	2.38	62.4	4890	1.66	3408	2.38	65.5	5132	1.98	4260	2.38	68.6	5374
5		20.0	3.11	82.3	8065	THERMAL EQUALS MECHANICAL	3.11	85.0	8322	THERMAL EQUALS MECHANICAL	3.11	87.6	8580			
10		10.0	1.94	75.6	9260		1.94	78.5	9806		1.94	81.3	9957			
15		6.7	1.50	69.6	9790		1.50	72.2	10160		1.50	75.2	10580			
20		5.0	0.95	66.3	7962		0.95	68.8	8264		0.95	71.7	8608			
30		3.3	0.94	55.8	9905		0.94	58.6	10390		0.94	61.0	10820			
40		2.5	0.61	51.6	7990		0.61	54.1	8384		0.61	56.4	8734			
50	2.0	0.41	47.6	6100	0.41		49.9	6401	0.41		52.0	6667				
60	1.7	0.30	43.8	4890	0.30	45.9	5132	0.30	48.1	5374						

ADDITIONAL RATINGS FOR OTHER INPUT SPEEDS ARE AVAILABLE AT WWW.REGALBELOIT.COM

OVERHUNG LOAD AND THRUST LOAD INFORMATION

OVERHUNG LOAD - LOW SPEED SHAFT —

MODELS 381 AND 384 1,600 LBS. AT CENTER POINT OF SHAFT EXTENSION.

MODELS 382 AND 385 NOT APPLICABLE.

MODELS 387 AND 388 — OHL* 1,970 LBS., TO* THRUST OUT 1,950 LBS. AND TI* THRUST IN 1,500 LBS.

THRUST* UP OR DOWN 1,500 LBS.

*OHL AND THRUST VALUES SHOWN ARE INDEPENDENT FUNCTIONS AND CANNOT BE APPLIED SIMULTANEOUSLY.

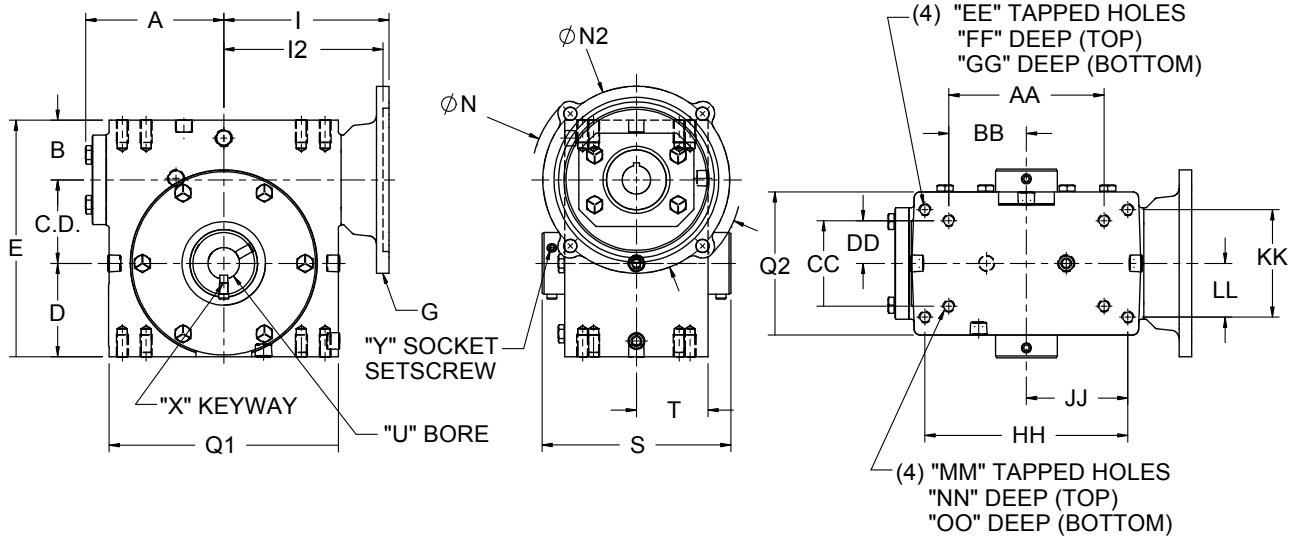
REFER APPLICATIONS WITH COMBINED OHL AND THRUST TO REGAL CUSTOMER SERVICE DEPARTMENT.

OUTPUT TORQUE VALUES SHOWN ARE INCH-POUNDS (IN-LB).

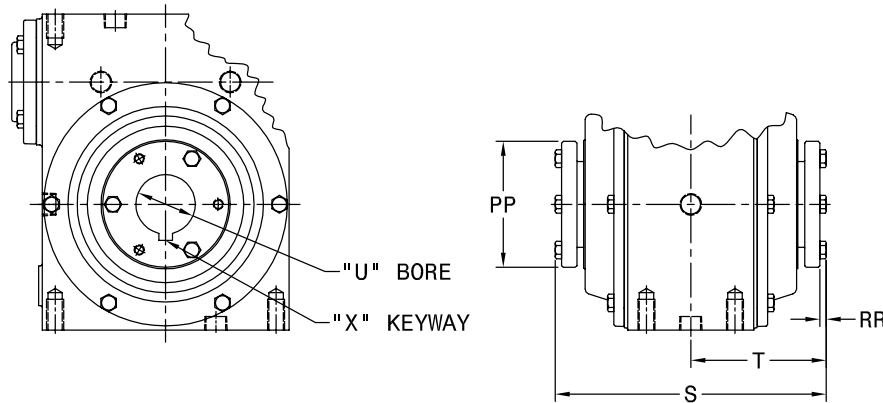
Hub City™ Worm Gear Drives

Single Reduction Models

135, 155, 185, 215, 245, 265, 305, 325, 385, 425, 455, 525, GW605



QD™ Bushing Detail for Models 455 & 525



SPECIAL, METRIC AND SAE HYDRAULIC INPUT FLANGES AVAILABLE. CONSULT FACTORY FOR COMPLETE SPECIFICATIONS.

THESE UNITS CAN BE FURNISHED WITH SOLID OUTPUT SHAFT ON SPECIAL ORDERS.

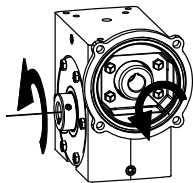
SHAFT MOUNTED UNITS REQUIRE TORQUE ARMS. TORQUE ARM KITS ARE AVAILABLE. SEE PAGE B-105.

ALL GW MODELS ARE FAN COOLED REFER TO FAN DETAILS ON NEXT PAGE.

FOR LUBRICATION AND INSTALLATION INSTRUCTIONS - REFER TO SECTION M

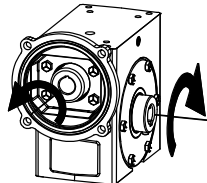
DIMENSIONS SHOWN ARE FOR REFERENCE ONLY.
 DOWNLOAD AVAILABLE CAD MODELS AT: WWW.HUBCITYINC.COM

Standard Styles Available



STYLE "A"

NOTE: STYLE "A" SUPPLIED AS STANDARD UNLESS SPECIFIED OTHERWISE.



STYLE "B"

NOTE: STYLE B DOES NOT APPLY TO MODELS 455 AND LARGER. HOUSINGS HAVE A COVER ON BOTH SIDES OF OUTPUT.

CONSULT FACTORY FOR VERTICAL SHAFT LUBRICATION RECOMMENDATIONS.

INPUT SHAFT CAN BE ROTATED IN EITHER DIRECTION.



Select hollow output bore models in this product line are now available with the HubLoc® keyless bushing system. Refer to pages i and ii at front of this catalog for features, available sizes, and ordering information.

Hub City™ Worm Gear Drives

Single Reduction Models

135, 155, 185, 215, 245, 265, 305, 325, 385, 425, 455, 525, GW605

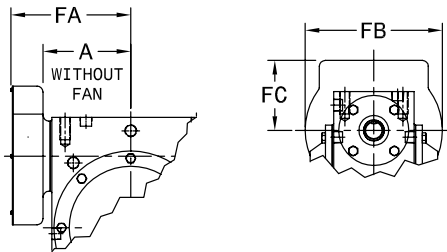
MODEL	C.D.	A	B	D	E	Q1	Q2
135	1.334	2.61	1.186	1.562	4.082	4.12	3.12
155	1.541	3.14	1.928	1.906	5.375	4.88	3.44
185	1.751	3.23	1.374	1.875	5.000	5.16	3.44
215	2.064	3.61	1.500	2.437	6.000	5.88	4.12
245	2.376	3.77	2.061	2.500	6.937	6.12	4.06
265	2.626	4.33	1.874	2.938	7.438	7.20	4.50
305	3.001	4.84	2.624	3.250	8.875	8.12	5.25
325	3.251	5.28	2.124	3.250	8.625	8.62	5.20
385	3.751	4.90	2.374	3.937	10.062	9.60	5.62
425	4.251	6.10	2.686	4.438	11.375	10.25	6.13
455	4.501	5.23	2.499	4.625	11.625	9.25	4.63
525	5.168	5.98	2.624	5.375	13.167	10.75	5.06
GW605	6.000	N/A	4.000	6.500	16.500	14.25	8.13

Stock Output Bores

MINIMUM AND MAXIMUM BORE DIMENSIONS SHOWN. FOR ADDITIONAL STOCK OUTPUT BORE SIZES AND STOCK QD™ BUSHING KITS AVAILABLE SEE PAGE B-96.

MODEL	U (MIN.)	U (MAX.)	S	T
135	N/A	5/8	4.50	2.25
155	N/A	5/8	5.42	2.71
185	15/16	1	4.81	2.41
215	15/16	1-1/2	5.56	2.78
245	1	1-1/2	6.00	3.00
265	1	1-1/2	5.93	2.97
305	1-3/16	2-3/16	7.50	3.75
325	1-7/16	2-3/16	7.56	3.78
385	1-7/16	2-3/16	7.56	3.78
425	1-7/16	2-3/16	8.50	4.25
455	QD BUSHING KIT REQUIRED		10.00	5.00
525	QD BUSHING KIT REQUIRED		11.13	5.56
GW605	2	3-7/16	11.50	5.75

Fan Detail for Model GW605



MODEL	A	FA	FB	FC
GW605	N/A	11.13	9.50	4.00

ALL GW MODELS ARE FAN COOLED.

MODEL	AA	BB	CC	DD	EE	FF	GG	HH	JJ	KK	LL	MM	NN	OO	Wt. Lbs.
135	2.250	1.125	1.625	0.813	1/4 UNC	0.50	0.50	3.250	1.625	2.000	1.000	5/16 UNC	0.50	0.50	16
155	4.188	2.094	2.750	1.375	5/16 UNC	0.63	0.63	N/A	N/A	N/A	N/A	N/A	N/A	N/A	16
185	3.125	1.563	1.625	0.813	1/4 UNC	0.50	0.50	4.188	2.094	2.750	1.375	5/16 UNC	0.63	0.63	16
215	4.000	2.000	2.000	1.000	3/8 UNC	0.50	0.70	5.000	2.500	2.875	1.438	3/8 UNC	0.70	0.70	25
245	5.000	2.500	2.875	1.438	3/8 UNC	0.69	0.69	N/A	N/A	N/A	N/A	N/A	N/A	N/A	38
265	4.875	2.438	2.688	1.344	3/8 UNC	0.70	0.70	6.375	3.188	3.375	1.688	3/8 UNC	0.70	0.70	38
305	7.000	3.500	4.000	2.000	7/16 UNC	0.88	0.88	N/A	N/A	N/A	N/A	N/A	N/A	N/A	61
325	6.250	3.125	2.750	1.375	1/2 UNC	0.75	0.75	7.500	3.750	4.000	2.000	7/16 UNC	0.88	0.88	70
385	6.875	3.438	3.000	1.500	1/2 UNC	0.94	1.00	8.500	4.250	4.750	2.375	1/2 UNC	1.00	1.00	86
425	8.500	4.250	5.000	2.500	5/8 UNC	1.00	1.00	N/A	N/A	N/A	N/A	N/A	N/A	N/A	117
455	8.125	4.063	3.250	1.625	5/8 UNC	0.88	1.13	N/A	N/A	N/A	N/A	N/A	N/A	N/A	117
525	9.500	4.750	3.750	1.875	5/8 UNC	1.00	1.25	N/A	N/A	N/A	N/A	N/A	N/A	N/A	145
GW605	12.750	6.375	6.380	3.190	5/8 UNC	1.00	1.00	N/A	N/A	N/A	N/A	N/A	N/A	N/A	330

MODEL	G	I	I2	N	N2
135	48CZ	3.46	N/A	4.36	3.87
	56C			6.63	6.50
155	48CZ	3.99	N/A	4.36	3.87
	56C			6.63	6.50
	143TC				
185	48CZ	4.09	N/A	4.36	3.87
	56C			6.63	6.50
	143TC				
215	48CZ	4.46	N/A	4.36	3.87
	56C			6.63	6.50
	143TC				
245	56C	4.63	N/A	6.50	6.50
	143TC			9.00	9.00
	182TC				
265	56C	5.19	N/A	6.50	6.50
	143TC			9.00	9.00
	182TC				
305	56C	5.95	N/A	6.50	6.50
	143TC			9.00	9.00
	182TC				
	213TC				
325	56C	6.14	N/A	6.50	6.50
	143TC			9.00	9.00
	182TC				
	213TC				
385	56C	6.50	N/A	6.50	6.50
	143TC			9.00	9.00
	182TC				
425	56C	6.45	N/A	6.50	6.50
	143TC			9.00	9.00
	182TC				
	213TC				
	254TC				
455	56C	6.75	N/A	6.50	6.50
	143TC			9.00	9.00
	182TC				
	213TC				
525 *	182TC	N/A	7.50	9.00	9.00
	213TC				
GW605	56C	10.45	N/A	6.50	6.50
	143TC			9.00	9.00
	182TC				
	213TC				
	254TC				

* 56C & 143TC FLANGES AVAILABLE AS MODIFIED STANDARDS