



## LJT - LED Lensed Troffer

- Full Distribution LED Troffer
- Direct Fluorescent Replacement
- 2'x2', 2'x4'
- DesignLights Consortium\*\*

Part Number	Catalog Number	UPC Code	Description	CA 03	GA 27	IL 06	PA 10	TX 04	Wt. each	# on Pallet	DLC QPL
93077462	LJT22-35HLG-FSA12-EDU-CP	078531127008	LED 2x2 Troffer, 3500K, 3845 lumens, 0-10V Dimming Driver, Chicago Plenum			●			10.0	36	●
93077459	LJT24-35MLG-FSA12-EDU-CP	078531127015	LED 2x4 Troffer, 3500K, 4772 lumens, 0-10V Dimming Driver, Chicago Plenum			●			20.0	26	●
93077456	LJT22-35HLG-FSA12-EDU	078531121228	LED 2x2 Lensed Troffer, 3500K, 3800 Lumens, 0-10V Dimming Driver	●	●	●	●	●	10.0	36	●
93077455	LJT22-40HLG-FSA12-EDU	078531123185	LED 2x2 Lensed Troffer, 4000K, 3800 Lumens, 0-10V Dimming Driver	●	●	●	●	●	10.0	36	●
93077454	LJT24-35MLG-FSA12-EDU	078531121235	LED 2x4 Lensed Troffer, 3500K, 4800 Lumens, 0-10V Dimming Driver	●	●	●	●	●	20.0	26	●
93077453	LJT24-40MLG-FSA12-EDU	078531123192	LED 2x4 Lensed Troffer, 4000K, 4800 Lumens, 0-10V Dimming Driver	●	●	●	●	●	20.0	26	●
93073553	LJT24-35VLG-FSA12-EDU	078531126964	LED 2x4 Lensed Troffer, 3500K, 6941 Lumens, 0-10V Dimming Driver			●			20.0	26	●

### QS 10 10-Day Quick-Ship Ordering Guide

Order Limit Per Luminaire Selection: 100

<b>LJT</b>	-		<b>G</b>	-	<b>FS</b>	-		<b>U</b>	-	
<b>MODEL</b> LJT LED Lensed Troffer	<b>COLOR TEMP</b> 35 3500K 40 4000K	<b>CEILING TYPE</b> G Grid <sup>1</sup>	<b>SHIELDING</b> A12 Pattern 12 Acrylic Lens	<b>OPTIONS</b> C388 3-Wire Flex C588 5-Wire Flex ELL14 Emergency Battery Pack Installed, 1400 Lumen <sup>2</sup> Chicago Plenum	<b>SIZE</b> 22 2' x 2' 24 2' x 4'	<b>LUMEN OUTPUT</b> LW Low Watt (2x4 only) ML Medium Lumen HL High Lumen VL Very High Lumen	<b>DOOR</b> FS White Flush Steel	<b>DRIVER</b> E Fixed Output ED 0-10V Dimming ED1 0-10V 1% Dimming <sup>2</sup>	<b>VOLTAGE</b> U 120V-277V	

<sup>1</sup> For hard ceilings use flange kit accessory.  
<sup>2</sup> For compatibility with Dual-Lite LiteGear<sup>®</sup> inverters in lieu of EL Battery Pack, contact Hubbell Lighting Representative.

\*DesignLights Consortium<sup>®</sup> (DLC) qualified. Please refer to the DLC website for specific product qualifications at [www.designlights.org](http://www.designlights.org)



### JT8 - Lensed Troffers

- Flush Steel Doors
- Integral T-Bar Clips
- Optimized for T8 Lamps

Part Number	Catalog Number	UPC Code	Description	CA 03	GA 27	IL 06	PA 10	TX 04	Wt. each	# on Pallet
93073561	JT822-232U6G-FSA12-EU-CP	078531127046	2x2, 2-L, 120-277V T8 Elec Ballast, Chicago Plenum			●			16.0	36
93073559	JT824-232G-FSA12-EU-CP	078531127022	2x4, 2-L, 120-277V T8 Elec Ballast, Chicago Plenum			●			20.0	26
93073560	JT824-332G-FSA12-3EU-CP	078531127039	2x4, 3-L, 120-277V 3-L T8 Elec Ballast, Chicago Plenum			●			20.0	26
JT243119FTP0000	JT822-232U6G-FSA12-EU	078531005603	2x2, 2-L, 120-277V T8 Elec Ballast	●	●	●	●	●	16.0	36
JT241119F000000	JT824-232G-FSA12-EU	078531005610	2x4, 2-L, 120-277V T8 Elec Ballast	●	●	●	●	●	20.0	26
JT341119G000000	JT824-332G-FSA12-3EU	078531005627	2x4, 3-L, 120-277V 3-L T8 Elec Ball.	●	●	●	●	●	20.0	26
JT441119H000000	JT824-432G-FSA12-4EU	078531005641	2x4, 4-L, 120-277V 4-L T8 Elec Ballast	●	●	●	●	●	18.0	26
93057977	JT824-332G-FSA12-3EU-F835-C388	078531124038	2x4, 3-L, 120-277V 3-L T8 Elec Ballast, 3500K Lamps, 3/8" Flex with 3 No. 18 Wires			●			20.0	26
93057981	JT824-432G-FSA12-4EU-F835-C388	078531124076	2x4, 4-L, 120-277V 4-L T8 Elec Ballast, 3500K Lamps, 3/8" Flex with 3 No. 18 Wires			●			20.0	26
93057983	JT824-432G-FSA12-4EU-F841-C388	078531124090	2x4, 4-L, 120-277V 4-L T8 Elec Ballast, 4100K Lamps, 3/8" Flex with 3 No. 18 Wires			●			20.0	26
003334.00	A12.095 22.500-22.500	078531004781	2x2 Replacement Lens			●			1.0	N/A
003335.00	A12.095 22.500-46.562	078531004774	2x4 Replacement Lens			●	●		2.0	N/A
003312.00	A12.125	078531022891	2x4 Replacement Lens			●	●		2.5	N/A



### LCAT - LED Contemporary Architectural Troffer

- Aesthetically Pleasing
- Reduce Maintenance
- 2'x2'; 2'x4'
- DesignLights Consortium\*\*

Part Number	Catalog Number	UPC Code	Description	CA 03	GA 27	IL 06	PA 10	TX 04	Wt. each	# on Pallet	DLC QPL
93077472	LCAT22-35MLG-EDU-CP	078531126988	LED 2x2 Contemporary Architectural Troffer, 3500K, 3259 lumens, 0-10V Dimming Driver, Chicago Plenum			●			15	40	●
93077471	LCAT24-35MLG-EDU-CP	078531126995	LED 2x4 Contemporary Architectural Troffer, 3500K, 4788 lumens, 0-10V Dimming Driver, Chicago Plenum			●			20	20	●
93077465	LCAT22-35MLG-EDU	078531125929	LED 2x2 Contemporary Architectural Troffer, 3500K, 3259 Lumens, 0-10V Dimming Driver	●	●	●	●	●	15	40	●
93077467	LCAT22-40MLG-EDU	078531125936	LED 2x2 Contemporary Architectural Troffer, 4000K, 3326 Lumens, 0-10V Dimming Driver	●	●	●	●	●	15	40	●
93077466	LCAT24-35LWG-EDU	078531125868	LED 2x4 Contemporary Architectural Troffer, 3500K, 4170 Lumens, 0-10V Dimming Driver	●	●	●	●	●	20	20	●
93077464	LCAT24-35MLG-EDU	078531125882	LED 2x4 Contemporary Architectural Troffer, 3500K, 4788 Lumens, 0-10V Dimming Driver	●	●	●	●	●	20	20	●
93077468	LCAT24-40LWG-EDU	078531125875	LED 2x4 Contemporary Architectural Troffer, 4000K, 4307 Lumens, 0-10V Dimming Driver	●	●	●	●	●	20	20	●
93077463	LCAT24-40MLG-EDU	078531125899	LED 2x4 Contemporary Architectural Troffer, 4000K, 4886 Lumens, 0-10V Dimming Driver	●	●	●	●	●	20	20	●



### 5-Day Quick Ship Ordering Guide

Order Limit Per Fixture Selection: 200

JT8	Model	No. of Lamps	Ceiling Type	Shielding	Voltage	Options
JT8	Dedicated T8 Lensed Troffer	2 Two 3 Three 4 Four (2 x 4 only)	G Grid	A12 Pattern 12 Acrylic Lens A12125 Pattern 12 Acrylic Lens, 0.125" Nominal	U 120V-277V 347 347V	F835 35K 78+CRI Full Wattage T8 Lamps Installed F841 41K 78+CRI Full Wattage T8 Lamps Installed F0835 35K 82CRI Full Wattage T8 Lamps Installed F0841 41K 82CRI Full Wattage T8 Lamps Installed EL Emergency Battery Pack <sup>2</sup> EL141 Emergency Battery Pack, 1400 Lumens 1-Lamp T8 C388 3-Wire Flex C488 4-Wire Flex
	SIZE	LAMP TYPE	DOOR	BALLAST		
	22 2' x 2' 24 2' x 4'	17 2', T8: 17 Watt 32 4', T8 <sup>1</sup> 32U6 U-Bent, 6" Leg Spacing T8: 32 Watt (2 lamps)	FS White Flush Steel	E Electronic T8, Instant Start 3E 3-Lamp Electronic T8, Instant Start 4E 4-Lamp Electronic T8, Instant Start EP Electronic T8, Programmed Start 3EP 3-Lamp Electronic T8, Programmed Start 4EP 4-Lamp Electronic T8, Programmed Start EHL Electronic High Light Output (1.18-1.2 BF) 3EHL 3-Lamp Electronic T8, High Light Output (1.18-1.2 BF) 4EHL 4-Lamp Electronic T8, High Light Output (1.18-1.2 BF) EPHL Electronic T8, High Light Output (1.18-1.2 BF), Programmed Start 3EPHL 3-Lamp Electronic T8, High Light Output (1.18-1.2 BF), Programmed Start 4EPHL 4-Lamp Electronic T8, High Light Output (1.18-1.2 BF), Programmed Start EPLW Electronic T8, Low Watt Output (1.18-1.2 BF), Programmed Start 3EPLW 3-Lamp Electronic T8, Low Watt Output (1.18-1.2 BF), Programmed Start 4EPLW 4-Lamp Electronic T8, Low Watt Output (1.18-1.2 BF), Programmed Start		

<sup>1</sup> Capable of operating 32, 30, 28 or 25 Watt T8 only.  
<sup>2</sup> 2 x 2 with 2 ballasts and EL N/A as Quick Ship.

### 10-Day Quick Ship Ordering Guide

Order Limit Per Fixture Selection: 100

LCAT	Model	Color Temp	Ceiling Type	Driver	Voltage	Options
LCAT	LED Contemporary Architectural Troffer	35 3500K 40 4000K	G Grid Lay-in <sup>1</sup>	E Fixed Output ED 0-10V Dimming ED1 0-10V 1% Dimming	U 120V-277V	ELL14 Emergency Battery Pack Installed, 1400 Lumen <sup>2</sup> C388 3-Wire Flex C488 4-Wire Flex C588 5-Wire Flex
	SIZE	LUMEN OUTPUT				
	22 2' x 2' 24 2' x 4'	LW Low Watt ML Medium Lumen HL High Lumen VL Very High Lumen				

<sup>1</sup> For drywall, order G with Flange Kit Accessory.  
<sup>2</sup> For compatibility with Dual-Lite LiteGear<sup>®</sup> inverters in lieu of installed Battery Pack, contact Hubbell Lighting Representative.



### SLK - LED Troffer Retrofit Kit

- Fully assembled for easy installation
- Retrofits both parabolic and prismatic troffers
- Reduces job waste
- DesignLights Consortium\*\*

Part Number	Catalog Number	UPC Code	Description	CA 03	GA 27	IL 06	PA 10	TX 04	Wt. each	# on Pallet	DLC QPL
93072852	SLK22-40ML-EDU	078531126827	LED, 2'x2'Troffer Retrofit Kit, 4000K, 3,000 Lumens, 0-10V Dimming Driver			●			10	40	●
93077320	SLK24-40LW-EDU	078531127398	LED, 2'x4'Troffer Retrofit Kit, 4000K, 4,600 Lumens, 0-10V Dimming Driver			●			20	20	●
93077321	SLK24-40VW-EDU	078531127404	LED, 2'x4'Troffer Retrofit Kit, 4000K, 3,400 Lumens, 0-10V Dimming Driver			●			20	20	●



#### 5-Day Quick Ship Ordering Guide

Order Limit Per Fixture Selection: 200

<b>SLK</b>						
<b>MODEL</b> SLK LED Troffer Conversion Kit	<b>COLOR TEMP</b> 35 3500K 40 4000K	<b>LUMEN OUTPUT</b> LW Low Wattage ML Medium Lumen HL High Lumen VL Very High Lumen (2x2 Only)	<b>DRIVER</b> E Fixed Output ESD Step Dimming ED 0-10V Dimming	<b>VOLTAGE</b> U 120-277 VAC	<b>OPTIONS</b> ELL14 Emergency Battery Pack Installed, 1400 Lumens LSP Lighting Surge Protector <sup>1</sup>	<b>SIZE</b> 22 2' x 2' 24 2' x 4'

<sup>1</sup> Not available with ESD Step Dimming on 2'x2'.



### STE - Stratus Recessed Direct/Indirect

- Stratus® E-Series Fluorescent
- T8, T5, T5HO, 40TT, 50TT
- Plastic Ends Caps Seal Light
- Aesthetically Delivers Uniform Illumination



Part Number	Catalog Number	UPC Code	Description	CA 03	GA 27	IL 06	PA 10	TX 04	Wt. each	# on Pallet
93073566	STE22-217G-MPO-EU-CP	078531126933	2x2, 2-L, Metal Perf. Basket w/Overlay, 120-277V T8 Elec Ballast, Chicago Plenum			●	●		12.0	24
93073565	STE24-232G-MPO-EU-CP	078531126926	2x4, 2-L, Metal Perf. Basket w/Overlay, 120-277V T8 Elec Ballast, Chicago Plenum			●	●		20.0	14
93029796	STE22-217G-MPO-EU	078531017415	2x2, 2-L, Metal Perf. Basket w/Overlay, 120-277V T8 Elec Ballast			●			12.0	24
93029804	STE24-232G-MPO-EU	078531017385	2x4, 2-L, Metal Perf. Basket w/Overlay, 120-277V T8 Elec Ballast			●	●	●	20.0	14
93029803	STE24-332G-MPO-3EU	078531017378	2x4, 3-L, Metal Perf. Basket w/Overlay, 120-277V T8 Elec Ballast			●	●	●	20.0	14
93029802	STE24-332G-MPO-EU	078531017392	2x4, 3-L, Metal Perf. Basket w/Overlay, 120-277V T8 Elec Ballast,			●	●		20.0	14
93030410	STE24-332G-MPO-3EPU	078531017460	2x4, 3-L, Metal Perf. Basket w/Overlay, 120-277V T8 Elec Ballast Programmed Start			●	●		20.0	14

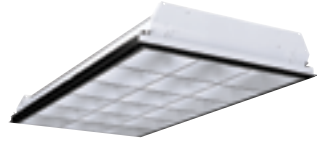


#### 5-Day Quick Ship Ordering Guide

Order Limit Per Fixture Selection: 100

<b>STE</b>			<b>G</b>	<b>MPO</b>				
<b>MODEL</b> STE Stratus Recessed Indirect	<b>NO. OF LAMPS IN CROSS SECTION</b> 2 Two 3 Three	<b>CEILING TYPE</b> G Grid Lay-in	<b>BALLAST</b> E Electronic T8, Instant Start EP Electronic T5, T5HO, or T8, Programmed Start ETT Electronic Twin Tube, Instant Start 3E 3-Lamp Electronic T8, Instant Start 3EP 3-Lamp Electronic T8 or T5, Programmed Start	<b>OPTIONS</b> EL Emergency Battery Pack, T8 EL5 Emergency Battery Pack, T5 EL141 Emergency Battery Pack, 1400 Lumens 1-Lamp T8 F830 30K 78+CRI 17 or 32W T8 Lamps Installed F835 35K 78+CRI 17 or 32W T8 Lamps Installed F841 41K 78+CRI 17 or 32W T8 Lamps Installed F0830 30K 82CRI 17 or 32W T8Lamps Installed F0835 35K 82CRI 17 or 32W T8Lamps Installed F0841 41K 82CRI 17 or 32W T8Lamps Installed F5830 30K 85CRI T5 or T5HOLamps Installed F5835 35K 85CRI T5 or T5HOLamps Installed F5841 41K 85CRI T5 or T5HOLamps Installed FTT830 30K 82CRI 40W TT Lamps Installed FTT835 35K 82CRI 40W TT Lamps Installed FTT841 41K 82CRI 40W TT Lamps Installed C388 3-Wire Flex C488 4-Wire Flex	<b>SIZE</b> 22 2' x 2' 24 2' x 4'	<b>LAMP TYPE</b> 17 2', T8: 17 Watt 24 2', T5HO: 24 Watt 28 4', T5: 28 Watt 32 4', T8 <sup>1</sup> 40TT Twin Tube Compact, 2G11 Base: 40 Watt (2-Lamp only)	<b>SHIELDING</b> MPO Metal Perf w/Overlay	<b>VOLTAGE</b> U 120V-277V 347 347V (T5 and T8 only)

<sup>1</sup> Capable of operating 32, 30, 28 or 25 Watt T8 only.



## P4D - High Performance Parabolic

- Provides Maximum Value in Low Profile
- Nominal 3" Deep Louver
- T8 and T5 Fluorescent
- Shallow Housing



Part Number	Catalog Number	UPC Code	Description	CA 03	GA 27	IL 06	PA 10	TX 04	Wt. each	# on Pallet
93073568	P4D22-232U6G-MA33-S-EU-CP	078531126957	2x2, 3-L, 9 Cell MA Lvr, 120-277V T8 Elec Ballast, Static, Chicago Plenum			•			32.0	28
93073567	P4D24-332G-MA36-S-3EU-CP	078531126940	2x4, 3-L, 18 Cell MA Lvr, 120-277V 3-L T8 Elec Ballast, Static, Chicago Plenum			•			33.0	16
P4D00120	P4D22-232U6G-MA33-S-EU	078531043445	2x2, 2-L, 9 Cell MA Lvr, 120-277V T8 Elec Ballast, Static		•	•	•	•	32.0	28
P4D00146	P4D24-332G-MA36-S-3EU	078531043483	2x4, 3-L, 18 Cell MA Lvr, 120-277V 3-L T8 Elec Ballast, Static		•	•	•	•	33.0	16
93057987	P4D24-332G-MA36-S-3EU-F835-C388	078531124137	2x4, 3-L, 18 Cell MA Lvr, 120-277V 3-L T8 Elec Ballast, Static, 3500K Lamps, 3/8" Flex with 3 No. 18 Wires			•	•		33.0	16
P4D00157	P4D24-332G-MA36-AV-3EU	078531043711	2x4, 3-L, 18 Cell MA Lvr, 120-277V 3-L T8 Elec Ballast, Air Handling w/ Supply Vanes			•	•		33.0	16
P4D019047.16PK1	LVR-P4D24 3X6 MA HK BAG	078531044985	Louver for 2x4, 18 cell, MA				•		10.0	N/A

## 5-Day Quick Ship Ordering Guide

Order Limit Per Fixture Selection: 150

P4D			G	MA		S				
<b>MODEL</b> P4D High Performance Parabolic	<b>NO. OF LAMPS</b> 2 Two 3 Three	<b>CEILING TYPE</b> G Grid	<b>CELLS WIDE BY CELLS LONG</b> 33 3 x 3 (2' x 2' only) 36 3 x 6 (2' x 4' 3-Lamp only)	<b>BALLAST</b> E 2-Lamp Electronic T8, Instant Start 3E 3-Lamp Electronic T8, Instant Start EP T8, Programmed Start 3EP 3-Lamp T8, Programmed Start	<b>VOLTAGE</b> U 120V-277V 347 347V	<b>OPTIONS</b> F835 35K 78+CRI Full Wattage T8 Lamps Installed F841 41K 78+CRI Full Wattage T8 Lamps Installed F0835 35K 82CRI Full Wattage T8 Lamps Installed F0841 41K 82CRI Full Wattage T8 Lamps Installed C388 3-Wire Flex C488 4-Wire Flex EL Emergency Battery Pack EL141 Emergency Battery Pack, 1400 Lumens 1-Lamp T8	<b>SIZE</b> 22 2' x 2' 24 2' x 4'	<b>LAMP TYPE</b> 17 2', T8: 17 Watt 32 4', T8 <sup>1</sup> 32U6 U-Bent, 6" Leg Spacing T8: 32 Watt (2-Lamp only)	<b>LOUVER FINISH</b> MA Matte Anodized Low Iridescent Semi-Specular Aluminum (Std.)	<b>AIR HANDLING</b> S Static

<sup>1</sup> Capable of operating 32, 30, 28 or 25 Watt T8 only.



## LSER - Serrano® LED Architectural Luminaire

- Contour lens for architectural appeal
- Performance and Energy Savings
- Modular replaceability
- DesignLights Consortium\*\*

## 10-Day Quick Ship Ordering Guide

Order Limit Per Fixture Selection: 100

LSER			G			U		
<b>MODEL</b> LSER Serrano® LED Architectural Luminaire	<b>COLOR TEMP</b> 35 3500K 40 4000K	<b>CEILING TYPE</b> G Grid <sup>1</sup>	<b>SHIELDING</b> C Contour	<b>VOLTAGE</b> U 120V-277V	<b>OPTIONS</b> C388 3-Wire Flex C488 4-Wire Flex C588 5-Wire Flex ELL14 Emergency Battery Pack, 1400 Lumen <sup>2</sup>	<b>SIZE</b> 22 2' x 2' 24 2' x 4'	<b>LUMEN OUTPUT</b> LW Low Watt ML Medium Lumen HL High Lumen VL Very High Lumen	<b>DRIVER</b> E Fixed Output ED 0-10V Dimming

<sup>1</sup> For drywall, order G with Flange Kit Accessory.

<sup>2</sup> For compatibility with Dual-Lite LiteGear® inverters in lieu of installed Battery Pack, contact Hubbell Lighting Representative.



## SER - Serrano® Recessed Architectural Luminaire

- Fluorescent technology
- Architectural style
- Most configurations produce low W/ft2

## 10-Day Quick Ship Ordering Guide

Order Limit Per Fixture Selection: 100

SER			G	C						
<b>MODEL</b> SER Serrano® Recessed Architectural Luminaire	<b>NO. OF LAMPS</b> 1 One 2 Two 3 Three	<b>CEILING TYPE</b> G Grid	<b>BALLAST</b> E Electronic T8, 0.88 Ballast Factor, Instant Start EP Electronic T5, T5HO, 1.0 Ballast Factor or T8, 0.88 Ballast Factor, Programmed Start ETT Electronic Twin Tube, Instant Start EPTT Electronic Twin Tube, Programmed Start 3E 3-Lamp Electronic T8, Instant Start 3EP 3-Lamp Electronic T8, Programmed Start	<b>VOLTAGE</b> U 120V-277V 347 347V (T5 and T8 only)	<b>OPTIONS</b> EL Emergency Battery Pack, T8 EL5 Emergency Battery Pack, T5 EL141 Emergency Battery Pack, 1400 Lumens 1-Lamp T8 C388 3-Wire Flex C488 4-Wire Flex	<b>SIZE</b> 14 1' x 4' 22 2' x 2' 24 2' x 4'	<b>LAMP TYPE</b> 17 2', T8: 17 Watt 24 2', T5HO: 24 Watt 28 4', T5: 28 Watt 32 4', T8 <sup>1</sup> 40TT Twin Tube Compact, 2G11 Base: 40 Watt	<b>SHIELDING</b> C Contour	<b>REFLECTOR</b> P Performance F Full	<b>LAMPS</b> F830 30K 78+CRI T8 Lamps Installed F835 35K 78+CRI T8 Lamps Installed F841 41K 78+CRI T8 Lamps Installed F0830 30K 82CRI 32W T8 Lamps Installed F0835 35K 82CRI 32W T8 Lamps Installed F0841 41K 82CRI 32W T8 Lamps Installed F5830 30K 85CRI T5 or T5HO Lamps Installed F5835 35K 85CRI T5 or T5HO Lamps Installed F5841 41K 85CRI T5 or T5HO Lamps Installed FTT830 30K 82CRI 40W TT Lamps Installed FTT835 35K 82CRI 40W TT Lamps Installed FTT841 41K 82CRI 40W TT Lamps Installed

<sup>1</sup> Capable of operating 32, 30, 28 or 25 Watt T8 only.



### LTRE - Transition® Enclosed LED High Efficiency Architectural Lens

- Designed for flexibility
- Full distribution
- Enclosed lens resists intrusion of contaminants
- DesignLights Consortium\*\*

#### QS 10 10-Day Quick Ship Ordering Guide

Order Limit Per Fixture Selection: 100

<b>LTRE</b>	-		<b>G</b>	-	<b>RFA</b>	-		<b>U</b>	-	
<b>MODEL</b>		<b>COLOR TEMP</b>	<b>CEILING TYPE</b>		<b>SHIELDING</b>		<b>VOLTAGE</b>		<b>OPTIONS</b>	
LTRE Transition® Enclosed LED High Efficiency Architectural Lensed		35 3500K 40 4000K	G Grid Lay-in <sup>1</sup>		RFA Ribbed Frosted Acrylic		U 120V-277V		C388 3-Wire Flex C488 4-Wire Flex C588 5-Wire Flex ELL14 Emergency Battery Pack, 1400 Lumen <sup>2</sup>	
	<b>SIZE</b>		<b>LUMEN OUTPUT</b>		<b>DRIVER</b>					
	22 2' x 2' 24 2' x 4'		LW Low Watt (2x4 only) ML Medium Lumen HL High Lumen (2x2 only) VL Very High Lumen (2x2 only)		E Fixed Output ED 0-10V Dimming					

<sup>1</sup> For drywall, order G with Flange Kit Accessory.  
<sup>2</sup> For compatibility with Dual-Lite LiteGear® inverters in lieu of installed Battery Pack, contact Hubbell Lighting Representative.



### EPC - Full Distribution Luminaire

- Attractive Lighting with full light distribution
- Code compliance, rebates, EPACT
- Hinged optical system for serviceability
- T5 & T8

#### QS 10 10-Day Quick Ship Ordering Guide

Order Limit Per Fixture Selection: 100

<b>EPC</b>	<b>24</b>	<b>2</b>		<b>G</b>	<b>SH</b>				
<b>MODEL</b>	<b>NO. OF LAMPS</b>	<b>CEILING TYPE</b>	<b>SHIELDING</b>	<b>VOLTAGE</b>	<b>OPTIONS</b>	<b>SIZE</b>	<b>LAMP TYPE</b>	<b>BALLAST</b>	<b>LAMPS INSTALLED (REQUIRED)</b>
EPC e-poc® Full Distribution Luminaire	2 Two	G Grid	SH Shield Profile	U 120V-277V 347 347V (E and EP only)	C388 3-Wire Flex EL Emergency Battery Pack, T8 EL5 Emergency Battery Pack, T5 EL141 Emergency Battery Pack, 1400 Lumens 1-Lamp T8	24 2' x 4'	28 4', T5: 28 Watt 32 4', T8 <sup>1</sup>	E Electronic T8, 0.88 Ballast Factor, Instant Start E104 Electronic T8, 1.04 Ballast Factor, Instant Start (2-lamp only) EP Electronic T5, T5HO, 1.0 Ballast Factor or T8, 0.88 Ballast Factor, Programmed Start EP95 Electronic T5, 0.95 Ballast Factor, Programmed Start	F830 30K 78+CRI 32W T8 Lamps Installed F835 35K 78+CRI 32W T8 Lamps Installed F841 41K 78+CRI 32W T8 Lamps Installed F0830 30K 82CRI 32W T8 Lamps Installed F0835 35K 82CRI 32W T8 Lamps Installed F0841 41K 82CRI 32W T8 Lamps Installed F5830 30K 85CRI T5 or T5HO Lamps Installed F5835 35K 85CRI T5 or T5HO Lamps Installed F5841 41K 85CRI T5 or T5HO Lamps Installed

<sup>1</sup> Capable of operating 32, 30, 28 or 25 Watt T8 only.



### RLA - Recessed LED Architectural

- Performance and Energy Savings
- Available in 2'x2' & 2'x4'
- DesignLights Consortium\*\*

#### QS 10 10-Day Quick Ship Ordering Guide

Order Limit Per Fixture Selection: 100

<b>RLA</b>	-		<b>G</b>	-		<b>U</b>	-	
<b>MODEL</b>	<b>COLOR TEMP</b>	<b>CEILING TYPE</b>	<b>DRIVER</b>	<b>VOLTAGE</b>	<b>OPTIONS</b>	<b>SIZE</b>	<b>LUMEN OUTPUT</b>	
RLA Recessed LED Architectural Luminaire	35 3500K 40 4000K	G Grid <sup>1</sup>	E Fixed Output ED 0-10V Dimming ED1 0-10V 1% Dimming	U 120V-277V	C388 3-Wire Flex C488 4-Wire Flex C588 5-Wire Flex ELL14 Emergency Battery Pack Installed, 1400 Lumen <sup>2</sup>	22 2' x 2' 24 2' x 4'	LW Low Watt ML Medium Lumen HL High Lumen VL Very High Lumen	

<sup>1</sup> For drywall, order G with Flange Kit Accessory.  
<sup>2</sup> For compatibility with Dual-Lite LiteGear® inverters in lieu of installed Battery Pack, contact Hubbell Lighting Representative.



### 4PS - Specification Grade Lensed Troffers

- Excellent lamp-to-lens spacing
- Doors are retained by cam latches and hinge from either side
- Hemmed or rolled edge housing
- Fluorescent, energy efficient light source

#### QS 10 10-Day Quick Ship Ordering Guide

Order Limit Per Fixture Selection: 150

<b>4PS</b>	-		<b>G</b>	-					
<b>MODEL</b>	<b>NO. OF LAMPS</b>	<b>CEILING TYPE</b>	<b>SHIELDING</b>	<b>VOLTAGE</b>	<b>SIZE</b>	<b>LAMP TYPE</b>	<b>DOOR</b>	<b>BALLAST</b>	<b>OPTIONS</b>
4PS Specification Grade Static Troffer	2 Two 3 Three 4 Four (2 x 4 only)	G Grid	A12 Pattern 12 Acrylic Lens A12125 Pattern 12 Acrylic Lens, 0.125" Nominal	U 120V-277V 347 347V (T8 only)	22 2' x 2' 24 2' x 4'	32 4', T8 <sup>1</sup> 32U6 U-Bent, 6" Leg Spacing T8: 32 Watt (2 lamps) 40TT Twin Tube Compact, 2G11 Base: 40 Watt (2 or 3 lamps)	FS White Flush Steel RA White Regressed Aluminum	E Electronic T8, Instant Start 3E 3-Lamp Electronic T8, Instant Start 4E 4-Lamp Electronic T8, Instant Start EP Electronic T8, Programmed Start 3EP 3-Lamp Electronic T8, Programmed Start 4EP 4-Lamp Electronic T8, Programmed Start ETT Electronic Twin Tube, Instant Start	F835 35K 78+CRI Full Wattage T8 Lamps Installed F841 41K 78+CRI Full Wattage T8 Lamps Installed F0835 35K 82CRI Full Wattage T8 Lamps Installed F0841 41K 82CRI Full Wattage T8 Lamps Installed EL Emergency Battery Pack, T8 EL141 Emergency Battery Pack, 1400 Lumens 1-Lamp T8 C388 3-Wire Flex C488 4-Wire Flex

<sup>1</sup> Capable of operating 32, 30, 28 or 25 Watt T8 only.



### ST8 - Shallow Specification Lensed Troffers

- Designed for T8
- 2-1/8" minimum spacing from lamp to lens
- Integral T-bar clips for 2'x4'
- Snap-in ballast cover for serviceability

#### QS 5 5-Day Quick Ship Ordering Guide

Order Limit Per Fixture Selection: 200

<b>ST8</b>			<b>G</b>	<b>FS</b>				
MODEL	NO. OF LAMPS	CEILING TYPE	SHIELDING	VOLTAGE				
ST8 Low Profile Specification Troffer	2 Two 3 Three (N/A 1 x 4) 4 Four (N/A 1 x 4 or 2 x 2)	G Grid	A12 Pattern 12 Acrylic Lens A12125 Pattern 12 Acrylic Lens, 0.125" Nominal	U 120V-277V 347 347V				
SIZE	LAMP TYPE	DOOR	BALLAST	OPTIONS				
14 1' x 4'	17 2', T8: 17 Watt	FS White Flush Steel	E Electronic T8, Instant Start	F835 35K 78+CRI Full Wattage T8 Lamps Installed				
22 2' x 2'	32 4', T8 <sup>1</sup>		3E 3-Lamp Electronic T8, Instant Start	F841 41K 78+CRI Full Wattage T8 Lamps Installed				
24 2' x 4'	32U6 U-Bent, 6" Leg Spacing T8: 32 Watt (2-lamp only)		4E 4-Lamp Electronic T8, Instant Start	F0835 35K 82CRI Full Wattage T8 Lamps Installed				
			EP Electronic T8, Programmed Start	F0841 41K 82CRI Full Wattage T8 Lamps Installed				
			3EP 3-Lamp Electronic T8, Programmed Start	EL Emergency Battery Pack <sup>2</sup>				
			4EP 4-Lamp Electronic T8, Programmed Start	EL141 Emergency Battery Pack, 1400 Lumens 1-Lamp T8				
				C388 3-Wire Flex				
				C488 4-Wire Flex				

<sup>1</sup> Capable of operating 32, 30, 28 or 25 Watt T8 only.  
<sup>2</sup> 2 x 2 with 2 ballasts and EL N/A as Quick Ship.



### TRA - Transition® High Efficiency Architectural Lensed

- Available for use with T8, T5, or T5HO
- Up to 95% efficient using T8
- Over 100% efficient in T5 lamping

#### QS 10 10-Day Quick Ship Ordering Guide

Order Limit Per Fixture Selection: 100

<b>TRA</b>			<b>G</b>	<b>CLO</b>				
MODEL	NO. OF LAMPS IN CROSS SECTION	CEILING TYPE	BALLAST	VOLTAGE	OPTIONS	SIZE	LAMP TYPE	SHIELDING
TRA Transition® High Efficiency Architectural Lensed	2 Two 3 Three	G Grid Lay-in	E Electronic T8, Instant Start EP Electronic T5, T5HO, or T8, Programmed Start ETT Electronic Twin Tube, Instant Start EPTT Electronic Twin Tube, Programmed Start	U 120V-277V 347 347V (T5 and T8 only)	EL Emergency Battery Pack, T8 EL5 Emergency Battery Pack, T5 EL141 Emergency Battery Pack, 1400 Lumens 1-Lamp T8 F830 30K 78+CRI 17 or 32W T8 Lamps Installed F835 35K 78+CRI 17 or 32W T8 Lamps Installed F841 41K 78+CRI 17 or 32W T8 Lamps Installed F0830 30K 82CRI 17 or 32W T8 Lamps Installed F0835 35K 82CRI 17 or 32W T8 Lamps Installed F0841 41K 82CRI 17 or 32W T8 Lamps Installed F5830 30K 85CRI T5 or T5HO Lamps Installed F5835 35K 85CRI T5 or T5HO Lamps Installed F5841 41K 85CRI T5 or T5HO Lamps Installed FTT830 30K 82CRI 40W TT Lamps Installed FTT835 35K 82CRI 40W TT Lamps Installed FTT841 41K 82CRI 40W TT Lamps Installed C388 3-Wire Flex C488 4-Wire Flex	22 2' x 2' 24 2' x 4'	17 2', T8: 17 Watt 24 2', T5HO: 24 Watt 28 4', T5: 28 Watt 32 4', T8 <sup>1</sup> 40TT Twin Tube Compact, 2G11 Base: 40 Watt (2-Lamp only)	CLO Clear Linear Prism Acrylic with Overlay

\*DesignLights Consortium® (DLC) qualified. Please refer to the DLC website for specific product qualifications at www.designlights.org



### ZPT - Zero Plenum® Troffer

- Housing depth only 1-1/2"
- Does not intrude into plenum specs
- Unique telescoping housing
- Installs in minutes

#### QS 10 10-Day Quick Ship Ordering Guide

Order Limit Per Fixture Selection: 100

<b>ZPT</b>		<b>2</b>		<b>G</b>			<b>EP</b>		
MODEL	NO. OF LAMPS	CEILING TYPE	REFLECTOR	VOLTAGE	SIZE	LAMP TYPE	SHIELDING	BALLAST	OPTIONS
ZPT Zero Plenum® Troffer	2 Two	G Grid Lay-in	O Open (N/A with PRF) R Ribbed Curve S Smooth Curve	U 120V-277V 347 347V (T5 only)	22 2' x 2' 24 2' x 4'	14 2', T5: 14 Watt 24 2', T5HO: 24 Watt 28 4', T5: 28 Watt 54 4', T5HO: 54 or 51 Watt	LSR Linear Prismatic Lens with Surface Relief Diffuser PRF Metal Perf w/ Overlay	EP Electronic T5, 1.00 Ballast Factor (28W or 54W)	C38890 3-Wire Flex, 90° Connector EL5 Emergency Battery Pack (N/A 2 x 2) F5835 35K 85CRI T5 or T5HO Lamps Installed F5841 41K 85CRI T5 or T5HO Lamps Installed

**ACCESSORIES (ORDER SEPARATELY)**  
 ZPTSMK22 ZPT Surface Mounting Kit (2' x 2')  
 ZPTSMK24 ZPT Surface Mounting Kit (2' x 4')



### GORK - LED Prismatic Troffer Retrofit Kit

- Low-cost LED retrofit for prismatic troffers
- 100+ lumens per watt
- Available for 2x4 configuration
- Pre-wired for easy installation

#### QS 5 5-Day Quick Ship Ordering Guide

Order Limit Per Fixture Selection: 100

<b>GORK</b>					<b>U</b>
MODEL	SIZE	COLOR TEMP	LUMEN OUTPUT	DRIVER	VOLTAGE
GORK LED Retrofit Kit	22 2' x 2' Nominal 24 2' x 4' Nominal	35 3500K 40 4000K	MW Medium Low Wattage LW Low Wattage ML Medium Lumen	E Fixed Output ED 0-10V Dimming <sup>1</sup>	U Universal 120-277 VAC

<sup>1</sup> Must be used in conjunction with lighting controls.



### LAW - LED Wraparound

- Low Profile; Nominal 3"
- Replaces 1 & 2 Lamp Fluorescent
- Up to 109 LPW
- DesignLights Consortium\*\*

Part Number	Catalog Number	UPC Code	Description	CA 03	GA 27	IL 06	PA 10	TX 04	Wt. each	# on Pallet	DLC QPL
93061881	LAW4-35LW-EDU	078531125240	LED 4'Wrap, 3500K, 2500 Lumens, 0-10V Dimming Driver			•			14.0	55	
93061879	LAW4-35HL-EDU	078531125226	LED 4'Wrap, 3500K, 5600 Lumens, 0-10V Dimming Driver			•			14.0	55	
93061880	LAW4-40HL-EDU	078531125233	LED 4'Wrap, 4000K, 5600 Lumens, 0-10V Dimming Driver			•			14.0	55	
93055614	LAW4-35ML-EDU	078531123635	LED 4'Wrap, 3500K, 4500 Lumens, 0-10V Dimming Driver	•	•	•	•	•	14.0	55	•
93056100	LAW4-40ML-EDU	078531123840	LED 4'Wrap, 4000K, 4500 Lumens, 0-10V Dimming Driver	•	•	•	•	•	14.0	55	•

\*DesignLights Consortium® (DLC) qualified. Please refer to the DLC website for specific product qualifications at www.designlights.org



## AW - Wraparounds

- Low Profile
- Lens Hinges From Either Side
- White Steel Housing
- 2, 3 and 4 Lamp Available

Part Number	Catalog Number	UPC Code	Description	CA 03	GA 27	IL 06	PA 10	TX 04	Wt. each	# on Pallet
CY222019F000000	AWN2-217-EU	078531009984	2-2'T8, 2', 120-277V T8 Elec Ballast				•	•	8.0	110
CY241019F000000	AWN4-232-EU	078531004859	2-4'T8, 4', 120-277V T8 Elec Ballast	•	•	•	•	•	14.0	55
CL441019H000000	AWW4-432-4EU	078531004873	4-4'T8, 4', 120-277V 4-L T8 Elec Ballast	•	•	•	•	•	14.0	33
CY8092746000000	SHLD AWN 4FT	078531001148	AWN Replacement Lens			•	•	•	10.0	100
CL8092721000000	SHLD AWW 4FT	078531001155	AWW Replacement Lens			•	•	•	5.0	66



## W - Wall Mount Light

- Meets ADA requirements
- Easy serviceability
- Steel housing for rigidity
- Heat sink embossments

Part Number	Catalog Number	UPC Code	Description	CA 03	GA 27	IL 06	PA 10	TX 04	Wt. each	# on Pallet
24222019F000000	W2-217-EU	078531010294	2-2'T8, 2', 120-277V T8 Elec Ballast Less Switch, Less Convenience Outlet				•		6.0	N/A
24241019F000000	W4-232-EU	078531007287	2-4'T8, 4', 120-277V T8 Elec Ballast Less Switch, Less Convenience Outlet				•	•	13.0	N/A



## WC - Specification Grade Wraparounds

- Low Profile
- Lens Hinges From Either Side
- White Steel Housing
- 2, 3 and 4 Lamp Available

Part Number	Catalog Number	UPC Code	Description	CA 03	GA 27	IL 06	PA 10	TX 04	Wt. each	# on Pallet
CD241019F000000	WC4-232-EU	078531006075	2-4'T8, 4', 120-277V T8 Elec Ballast	•	•	•	•	•	13.0	48
CD8013802000000	SHLD ASY WC 4FT	078531000998	WC Replacement Lens - 4'			•	•		3.1	54
CF8013803000000	SHLD ASY WCW 4FT	078531001001	WCW Replacement Lens			•	•		10.0	80

## QS 10-Day Quick Ship Ordering Guide

Order Limit Per Fixture Selection: 100

32

MODEL	SIZE	LAMP TYPE	VOLTAGE	OPTIONS
AWN 8 <sup>5</sup> / <sub>16</sub> " Wide	4 4'	32 4', T8 <sup>1</sup>	U 120V-277V	EL Emergency Battery Pack
AWW 14 <sup>1</sup> / <sub>8</sub> " Wide	8 8' (AWN only)		347 347V	EL141 Emergency Battery Pack, 1400 Lumens 1-Lamp T8

NO. OF LAMPS IN CROSS SECTION	BALLAST
2 Two	E Electronic Instant Start
3 Three (AWW only)	3E 3-Lamp Electronic T8, Instant Start
4 Four (AWW only)	4E 4-Lamp Electronic T8, Instant Start
	EP Electronic T8, Programmed Start
	3EP 3-Lamp Electronic T8, Programmed Start
	4EP 4-Lamp Electronic T8 Programmed Start
	EHL Electronic High Light Output (1.18-1.2 BF)
	3EHL 3-Lamp Electronic T8, High Light Output (1.18-1.2 BF)
	4EHL 4-Lamp Electronic T8, High Light Output (1.18-1.2 BF)
	ELW Electronic Low Watt Output (.77-.78 BF)
	3ELW 3-Lamp Electronic T8, Low Watt Output (.77-.78 BF)
	4ELW 4-Lamp Electronic T8, Low Watt Output (.77-.78 BF)
	EPHL Electronic T8, High Light Output (1.18-1.2 BF), Programmed Start
	3EPHL 3-Lamp Electronic T8, High Light Output (1.18-1.2 BF), Programmed Start
	4EPHL 4-Lamp Electronic T8, High Light Output (1.18-1.2 BF), Programmed Start
	EPLW Electronic T8, Low Watt Output (1.18-1.2 BF), Programmed Start
	3EPLW 3-Lamp Electronic T8, Low Watt Output (1.18-1.2 BF), Programmed Start
	4EPLW 4-Lamp Electronic T8, Low Watt Output (1.18-1.2 BF), Programmed Start

<sup>1</sup> Capable of operating 32, 30, 28 or 25 Watt T8 only.



## LCS - LED Striplight

- Perfect for Back-of-house
- 2', 4' and 8'
- Heavy Die-Formed Steel
- DesignLights Consortium\*\*

Part Number	Catalog Number	UPC Code	Description	CA 03	GA 27	IL 06	PA 10	TX 04	Wt. each	# on Pallet	DLC QPL
93080531	LCS4-35ML-EDU	078531122294	LED 4' Striplight, 3500K, 5000 Lumens, 0-10V Dimming Driver	•	•	•	•	•	9.0	62	•
93080532	LCS4-40ML-EDU	078531123888	LED 4' Striplight, 4000K, 5000 Lumens, 0-10V Dimming Driver	•	•	•	•	•	9.0	62	•
93080533	LCS8-40ML-EDU	078531123895	LED 8' Striplight, 4000K, 11,200 Lumens, 0-10v Dimming Driver			•	•	•	12.0	62	•



## LCL - LED Striplight

- Lens Eliminates Pixelation
- 2', 4' and 8'
- Heavy Die-Formed Steel
- DesignLights Consortium\*\*

Part Number	Catalog Number	UPC Code	Description	CA 03	GA 27	IL 06	PA 10	TX 04	Wt. each	# on Pallet	DLC QPL
93080524	LCL4-35ML-EDU	078531124656	LED 4' Lensed Striplight, 3500K, 5000 Lumens, 0-10V Dimming Driver	•	•	•	•		8.0	62	•
93080525	LCL4-40ML-EDU	078531124663	LED 4' Lensed Striplight, 4000K, 5000 Lumens, 0-10V Dimming Driver	•	•	•	•	•	8.0	62	•
93080526	LCL8-35ML-EDU	078531124670	LED 8' Lensed Striplight, 3500K, 10,100 Lumens, 0-10V Dimming Driver			•	•		16.0	62	•
93080528	LCL8-40ML-EDU	078531124687	LED 8' Lensed Striplight, 4000K, 10,100 Lumens, 0-10V Dimming Driver			•			16.0	62	•

\*DesignLights Consortium® (DLC) qualified. Please refer to the DLC website for specific product qualifications at www.designlights.org

\*DesignLights Consortium® (DLC) qualified. Please refer to the DLC website for specific product qualifications at www.designlights.org



## CS - Striplights

- For Utility and Light Industrial
- Surface or Suspended
- Individual or Row Mounting
- Fluorescent Technology

Part Number	Catalog Number	UPC Code	Description	CA 03	GA 27	IL 06	PA 10	TX 04	Wt. each	# on Pallet
04141009F910000	CS4-132-EU	078531006280	1-4'T8, 4', 120-277V T8 Elec Ballast		•	•	•	•	9.0	77
04241009F910000	CS4-232-EU	078531005016	2-4'T8, 4', 120-277V T8 Elec Ballast	•	•	•	•	•	9.0	77
93022153	CS4-232-EPU	078531016609	2-4'T8, 4', 120-277V T8 Elec Prog Start Ballast	•		•		•	9.0	77
93038454	CS4-254-EPU	078531022969	2-4'T5, 4', 120-277V T5 Elec Ballast			•		•	9.0	77
03441009H910000	CS8-232-4EU	078531005023	4-8'T8, 8', 120-277V 4-L T8 Elec Ballast	•	•	•	•	•	17.0	77
04275009F910000	CS8-296T8-EU	078531005795	2-8'T8, 8', 120-277V T8 Elec Ballast		•	•		•	17.0	77
93038455	CS8-254-4EPU	078531022976	4-8'T5, 8', 120-277V 4-L T5 Elec Ballast				•	•	17.0	77
984084158000000	CSHC	078531000868	Two 14" chain assemblies for CS and CSR	•	•	•	•	•	0.2	N/A
745013602000000	CSR4	078531001575	4' symmetric reflector, white, solid top	•		•	•	•	2.0	N/A
745013603000000	CSRU4	078531001582	4' symmetric reflector, white, uplight			•			2.0	N/A
982092925000000	CSWG4	078531000882	4' Wire Guard for CS series	•	•	•	•	•	1.0	N/A
985084348700000	CSZT	078531740146	Zip T-Hanger - 1/2" spacer				•		0.2	N/A



## CH- 1-L Striplights

- For Heavy Duty Narrow Applications
- Surface or Suspended
- Individual or Row Mounting
- Fluorescent Technology

Part Number	Catalog Number	UPC Code	Description	CA 03	GA 27	IL 06	PA 10	TX 04	Wt. each	# on Pallet
84122009F910000	CH2-117-EU	078531005047	1-2'T8, 2', 120-277V T8 Elec Ballast			•	•	•	3.0	156
84131009F910000	CH3-125-EU	078531005054	1-3'T8, 3', 120-277V T8 Elec Ballast				•		7.0	156
84141009F910000	CH4-132-EU	078531005061	1-4'T8, 4', 120-277V T8 Elec Ballast			•	•	•	7.0	156
845034020000000	CHRA4	078531011970	4' Asymmetric Reflector (1-imp only)				•		1.9	N/A
980929240000000	CHWG4	078531002954	Wire Guard, 4' for CH Strip	•			•	•	10.0	N/A



## CSR - Industrials

- For Industrial Applications
- Surface or Suspended
- Individual or Row Mounting
- Fluorescent Technology

Part Number	Catalog Number	UPC Code	Description	CA 03	GA 27	IL 06	PA 10	TX 04	Wt. each	# on Pallet
56241719F910000	CSR4-232-ST-EU	078531004934	2-4'T8, 4', 120-277V T8 Elec Ballast, Solid Reflector			•	•	•	11.0	48
55441719H910000	CSR8-232-ST-4EU	078531004941	2-4'T8, 8', 120-277V 4-L T8 Elec Ballast, Solid Reflector			•	•	•	20.0	27
562092935000000	CSRWG4	078531740139	4' Wire Guard for CSR series			•	•	•	2.5	N/A
985084348700000	CSZT	078531740146	Zip T-Hanger - 1/2" spacer				•		0.2	N/A

### QS 10 10-Day Quick Ship Ordering Guide

Order Limit Per Fixture Selection: 100

<b>CS</b>	-		-		-		
<b>MODEL</b> CS Straight-Sided Utility Channel	<b>NO. OF LAMPS IN CROSS SECTION</b> 1 One 2 Two	<b>BALLAST</b> E Electronic T8, Instant Start 4E 4-Lamp Electronic T8, Instant Start EP Electronic T8, Programmed Start 4EP 4-Lamp Electronic T8, Programmed Start EHL Electronic High Light Output (1.18-1.2 BF) 4EHL 4-Lamp Electronic T8, High Light Output (1.18-1.2 BF) ELW Electronic Low Watt Output (.77-.78 BF) 4ELW 4-Lamp Electronic T8, Low Watt Output (.77-.78 BF) EPHL Electronic T8, High Light Output (1.18-1.2 BF), Programmed Start 4EPHL 4-Lamp Electronic T8, High Light Output (1.18-1.2 BF), Programmed Start EPLW Electronic T8, Low Watt Output (1.18-1.2 BF), Programmed Start 4EPLW 4-Lamp Electronic T8, Low Watt Output (1.18-1.2 BF), Programmed Start	<b>VOLTAGE</b> U 120V-277V 347 347V	<b>OPTIONS</b> EL Emergency Battery Pack EL141 Emergency Battery Pack, 1400 Lumens 1-Lamp T8	<b>ACCESSORIES (ORDER SEPARATELY)</b> CSRA4 4' Asymmetric Reflector CSRU4 4' Symmetric Reflector 5% Uplight	<b>SIZE</b> 2 2' 4 4' 8 8'	<b>LAMP TYPE</b> 17 2', T8: 17 Watt 32 4', T8 <sup>1</sup>

<sup>1</sup> Capable of operating 32, 30, 28 or 25 Watt T8 only.

### QS 10 10-Day Quick Ship Ordering Guide

Order Limit Per Fixture Selection: 100

<b>CSR</b>	-		-		-		
<b>MODEL</b> CSR Industrial	<b>NO. OF LAMPS</b> 2 Two 3 Three (T8 only)	<b>REFLECTOR TYPE</b> ST Solid Top Reflector U Apertured Reflector for 5% Uplight (Solid Reflector not recommended with HO units)	<b>VOLTAGE</b> U 120V-277V 347 347V (T8 only)	<b>OPTIONS</b> EL Emergency Battery Pack (T8 only) EL141 Emergency Battery Pack, 1400 Lumens 1-Lamp T8	<b>SIZE</b> 4 4' 8 8'	<b>LAMP TYPE</b> 32 4', T8 <sup>1</sup> 96HO 8', T12: 110 or 95 Watt	<b>BALLAST</b> E Electronic, Instant Start 3E 3-Lamp Electronic T8 (32W), Instant Start 4E 4-Lamp Electronic T8 (32W), Instant Start EP Electronic, Programmed Start, T8 3EP 3-Lamp Electronic T8, Programmed Start 4EP 4-Lamp Electronic T8, Programmed Start

<sup>1</sup> Capable of operating 32, 30, 28 or 25 Watt T8 only.



### KL - Specification Grade Industrials (Accessories)

- Lamp protection
- Mounting hardware

Part Number	Catalog Number	UPC Code	Description	CA 03	GA 27	IL 06	PA 10	TX 04	Wt. each	# on Pallet
820268450000000	KLWG4	078531007478	4' Wire Guard for KL series	•	•	•	•		3.2	N/A
984084190000000	KHC	078531000875	Two 24" chain assemblies for K and KL		•	•	•		0.3	N/A

#### QS 10-Day Quick Ship Ordering Guide

Order Limit Per Fixture Selection: 50

<b>KL</b>					
<b>MODEL</b> KL Premium Industrial	<b>NO. OF LAMPS</b> 2 Two 3 Three	<b>REFLECTOR TYPE</b> U Apertured Uplight Reflector ST Solid Top	<b>VOLTAGE</b> U 120V-277V 347 347V (T8 only)	<b>OPTIONS</b> EL Emergency Battery Pack EL5 Emergency Battery Pack, T5 EL141 Emergency Battery Pack, 1400 Lumens 1-Lamp T8	
<b>SIZE</b> 4 4' 8 8'	<b>LAMP TYPE</b> 32 4', T8 <sup>1</sup> 96T8 8', T8: 59 Watt (2-Lamp only) 96T8HO 8', T8: 86 Watt (2-Lamp only)	<b>BALLAST</b> E Electronic, Instant Start 3E 3-Lamp Electronic T8 (32W), Instant Start 4E 4-Lamp Electronic T8 (32W), Instant Start EP Electronic, Programmed Start, T5HO or T8 3EP 3-Lamp Electronic T5HO or T8, Programmed Start 4EP 4-Lamp Electronic T5HO or T8, Programmed Start <small>Instant Start ballasts available for 32 and 96T8. Programmed Start ballasts available for all except 96T8.</small>			
<b>ACCESSORIES (ORDER SEPARATELY)</b> KLEC Full Depth Endcap (pair) KZT Zip-Tee Hanger KLRU4 4' 5% Uplight Reflector Only KTH Slide Clamp Tong Hanger					

<sup>1</sup> Capable of operating 32, 30, 28 or 25 Watt T8 only.



### LLHV - VersaBay® High Bay / LED

- VersaBay® LED Highbay
- Replaces 150W to 1,000W HID
- Narrow and Wide Distribution
- DesignLights Consortium\*\*

Part Number	Catalog Number	UPC Code	Description	CA 03	GA 27	IL 06	PA 10	TX 04	Wt. each	# on Pallet	DLC QPL
93077528	LLHV4-40L-WST-EDU	078531126162	LED 4', 120-277V, 1 Driver	•	•		•		20.0	24	•
93077526	LLHV4-40M-WST-EDU	078531024000	LED 4', 120-277V, 1 Driver	•	•	•	•	•	20.0	24	•
93077525	LLHV4-40H-WST-EDU	078531024017	LED 4', 120-277V, 2 Drivers	•	•	•	•	•	20.0	24	•
93077530	LLHV4-50L-WST-EDU-OS1360	078531125028	LED 4', 120-277V, 1 Driver, Wasp 360° Sensor	•					20.1	24	•
93077529	LLHV4-50M-WST-EDU-OS1360	078531125011	LED 4', 120-277V, 1 Driver, Wasp 360° Sensor	•					20.2	24	•

#### QS 10-Day Quick Ship Ordering Guide

Order Limit Per Fixture Selection: 100

<b>LLHV</b>	<b>4</b>			<b>ST</b>		<b>U</b>	
<b>MODEL</b> LLHV VersaBay® LED High Bay	<b>COLOR TEMP</b> 40 4000K 50 5000K	<b>REFLECTOR</b> N Narrow Distribution W Wide Distribution	<b>VOLTAGE</b> U 120V-277V	<b>OPTIONS</b> C6TL15_ 6' Cord and Twist-Lock™ Plug 15A (Add Voltage: 1=120, 2=277) C6TL20_ 6' Cord and Twist-Lock™ Plug 20A (Add Voltage: 1=120, 2=277) C6P151 6' Cord and Straight Blade Plug 15A, 120V ELL14 Emergency Battery Pack Installed, 1400 Lumen <sup>1</sup>			
<b>SIZE</b> 4 4'	<b>LUMEN OUTPUT</b> L Low Watt M Medium Lumen H High Lumen	<b>UPLIGHT</b> ST Solid Top (no uplight)	<b>DRIVER</b> E Fixed Output ED 0-10V Dimming				

<sup>1</sup> ELL14 reduces max ambient temperature to 40°C. If combined with lens max is 30°C.



### LHA - Industrial Fluorescent High Bay

- Economical and Serviceable
- Compact, Open body, 2" Height
- Rotary Locking Lampholders
- Quick and Easy Mounting

Part Number	Catalog Number	UPC Code	Description	CA 03	GA 27	IL 06	PA 10	TX 04	Wt. each	# on Pallet
LHA000025	LHA4-632-NU-3EHLU	078531022136	6-4'T8, 4', 120-277V (2) 3-L T8 HL Elec Ballast Narrow Distribution, Uplight Reflector			●	●		24.0	24
LHA000040	LHA4-654-NST-24EPU	078531022488	6-4'T5, 4', 120-277V 2 & 4-L T5 Elec Ballast Narrow Distribution, Solid Reflector			●	●		26.0	24
LHA000041	LHA4-654-NU-24EPU	078531022150	6-4'T5, 4', 120-277V 2 & 4-L T5 Elec Ballast, Narrow Distribution, Uplight Reflector			●	●		26.0	24
LHA000043	LHA4-654-NU-24EPU-F554841	078531022167	6-4'T5, 4', 120-277V 2 & 4-L T5 Elec Ballast, 54 Watt Lamps Installed, Narrow Distribution, Uplight Reflector				●	●	26.0	24

#### QS 5 5-Day Quick Ship Ordering Guide

Order Limit Per Fixture Selection: 150

**LHA** **4** - [ ] - [ ] - [ ] - [ ] - [ ]

<b>SIZE</b> 4 4'	<b>NO. OF LAMPS</b> 4 Four 6 Six	<b>REFLECTOR</b> N Narrow Distribution W Wide Distribution	<b>UPLIGHT</b> ST Solid Top U Uplight	<b>VOLTAGE</b> U 120V-277V 347 347V	<b>OPTIONS</b> EL141 Emergency Battery Pack, T8, 1400 Lumens EL5H Emergency Battery Pack, T5, 1250 Lumens F3C5 3-Conductor Cord F4C5 4-Conductor Cord F3C10 3-Conductor Cord, 10' F4C10 4-Conductor Cord, 10'
<b>MODEL</b> LHA Industrial Fluorescent High Bay	<b>LAMP TYPE</b> 32 4', T8 <sup>1</sup> 54 4', T5HO: 54 or 51 Watt	<b>BALLAST</b> LHA4-454 4EP (1) 4-Lamp Electronic T5HO, Programmed Start LHA4-654 24EP (1) 2-Lamp and (1) 4-Lamp Electronic T5HO, Programmed Start LHA4-432 4EHL (1) 4-Lamp Electronic T8, High Light Output, Instant Start LHA4-632 3EHL (2) 3-Lamp Electronic T8, High Light Output, Instant Start 3EPHL (2) 3-Lamp Electronic T8, High Light Output, Programmed Start		<b>LAMPS INSTALLED</b> T8 F841 4100K 78+CRI 32W T8 F850 5000K 78+CRI 32W T8 T5HO F554841 54 Watt, 85 CRI, 4100K F554850 54 Watt, 85 CRI, 5000K	

<sup>1</sup> Capable of operating 32, 30, 28 or 25 Watt T8 only.



### LHV - VersaBay® High Bay

- VersaBay® Fluorescent High Bay
- Advanced Thermal Management
- Replaces 400W MH
- Easy To Install, "Plug and Play"

Part Number	Catalog Number	UPC Code	Description	CA 03	GA 27	IL 06	PA 10	TX 04	Wt. each	# on Pallet
LHV000029	LHV4-632-M4RU-3EHLU-FO850	078531016845	6-4'T8, 4', 120-277V (2) 3-L T8 HL Elec Ballast, 5000K Lamps			●			24.0	24
LHV000009	LHV4-632-M4RU-3EHLU	078531011048	6-4'T8, 4', 120-277V (2) 3-L T8 HL Elec Ballast,				●		24.0	24
LHV000006	LHV4-654-M4RU-24EPU	078531011031	6-4'T5, 4', 120-277V 2 & 4-L T5 Elec Ballast			●	●		26.0	24
LHVOS1360	LHVOS1360	078531023584	Occupancy/Daylight Sensor, with a 360° lens, 120/277/347V, One Relay			●			25.0	N/A
LHVQM10	LHVQM10	078531012526	Aircraft Cable Hangers, 10' (pair)	●	●	●	●	●	0.6	N/A
LHVQM5	LHVQM5	078531012670	Aircraft Cable Hangers, 5' (pair)	●	●	●	●	●	0.5	N/A
LHVSP	LHVSP	078531011338	Side Panels (pair)			●			5.0	N/A
LHVSPM5	LHVSPM5	078531012656	Single Point Mounting Kit, Includes Aircraft Cable, 5' (pair)			●	●		5.0	N/A
LHVTH	LHVTH	078531012649	Tong Hanger (pair)	●	●	●	●	●	0.6	N/A
LHVWG4-4	LHVWG4-4	078531012625	Cage Wireguard, 4-L, White	●	●	●	●	●	5.0	N/A
LHVWG4-6	LHVWG4-6	078531012618	Cage Wireguard, 6-L, White	●	●	●	●	●	5.0	N/A
C6P15-120	C6P15-120	078531016111	Cord and Plug Kit (white), 6 ft Straight Blade Nema 5-15P, 15 amp, 120V			●			0.8	N/A
C6TL15-120	C6TL15-120	078531016098	Cord and Plug Kit (white), 6 ft Twist Lock Nema L5-15P, 15 amp, 120V			●			0.8	N/A
C6TL15-277	C6TL15-277	078531016104	Cord and Plug Kit (white), 6 ft Twist Lock Nema L7-15P, 15 amp, 277V			●			0.8	N/A
LHV4CA	LHV4CA	078531016203	Clear Acrylic Lens for 4 lamp			●			2.5	N/A
LHV4FWG	LHV4FWG	078531016173	Flat Wire Guard for 4 lamp			●			2.5	N/A
LHV4SPJ	LHV4SPJ	078531016142	Side Panels and End Jaw (pair) for 4 lamp			●			2.5	N/A
LHV6CA	LHV6CA	078531016210	Clear Acrylic Lens for 6 lamp			●			2.5	N/A
LHV6FWG	LHV6FWG	078531016180	Flat Wire Guard for 6 lamp			●			2.5	N/A
LHV6SPJ	LHV6SPJ	078531016159	Side Panels and End Jaw (pair) for 6 lamp			●			2.5	N/A

#### QS 5 5-Day Quick Ship Ordering Guide

Order Limit Per Fixture Selection: 150

**LHV** **4** - [ ] - [ ] - [ ] - [ ] - [ ]

<b>SIZE</b> 4 4'	<b>NO. OF LAMPS</b> 4 Four 6 Six	<b>REFLECTOR</b> M4R 95% Reflective Specular Aluminum (Narrow Beam) GW Gloss White (Wide Beam)	<b>UPLIGHT</b> ST Solid Top U Uplight	<b>VOLTAGE</b> U 120V-277V 347 347V 480 480V <sup>2</sup>	<b>OPTIONS</b> EL141 Emergency Battery Pack, T8, 1400 Lumens (120-277V) EL5H Emergency Battery Pack, T5, 1250 Lumens (120-277V) F3C5 3-Conductor Cord F4C5 4-Conductor Cord F3C10 3-Conductor Cord, 10' F4C10 4-Conductor Cord, 10'
<b>MODEL</b> LHV VersaBay® Fluorescent High Bay	<b>LAMP TYPE</b> 32 4', T8 <sup>1</sup> 54 4', T5HO: 54 or 51 Watt	<b>BALLAST</b> LHV4-454 4EP (1) 4-Lamp Electronic T5HO, Programmed Start LHV4-654 24EP (1) 2-Lamp and (1) 4-Lamp Electronic T5HO, Programmed Start LHV4-432 4EHL (1) 4-Lamp Electronic T8, High Light Output, Instant Start (N/A 480V) LHV4-632 3EHL (2) 3-Lamp Electronic T8, High Light Output, Instant Start 3EPHL (2) 3-Lamp Electronic T8, High Light Output, Programmed Start <sup>3</sup>		<b>LAMPS INSTALLED</b> T8 F0841 4100K 82CRI 32W T8 F0850 5000K 82CRI 32W T8 T5HO F5841 4100K 85CRI F5850 5000K 85CRI	

<sup>1</sup> Capable of operating 32, 30, 28 or 25 Watt T8 only.  
<sup>2</sup> 480V option on T5HO units only.  
<sup>3</sup> N/A in 347V.



## LWS - 16" x 24" LED Suspended High/Low Bay

- Compact LED Highbay
- Wide Distribution
- Utilizes TIR Optics
- DesignLights Consortium\*\*

Part Number	Catalog Number	UPC Code	Description	CA 03	GA 27	IL 06	PA 10	TX 04	Wt. each	# on Pallet	DLC QPL
93069012	LWS-40HL-W-EDU	078531126445	LED 16" x 24" LED Suspended High/Low Bay, 4000K, 13,500 Lumens, 0-10V Dimming Driver			•	•	•	18	25	•
93069013	LWS-40XL-W-EDU	078531126452	LED 16" x 24" LED Suspended High/Low Bay, 4000K, 18,900 Lumens, 0-10V Dimming Driver			•	•	•	18	25	•
93069014	LWS-SFA 10-PK	078531126469	Smooth Frosted Acrylic Wrap Lens			•	•	•	10	NA	
LWSQM10	LWSQM10	078531126582	Aircraft Cable 10' (Pair)			•	•		NA	NA	



## LXEN - LED Enclosed & Gasketed Fiberglass

- IP65 & IP67 Rated
- Standard Ambient -20°C to 25°C
- DesignLights Consortium\*\*

Part Number	Catalog Number	UPC Code	Description	CA 03	GA 27	IL 06	PA 10	TX 04	Wt. each	# on Pallet	DLC QPL
93068900	LXEN4-40XW-RFA-EDU	078531126346	LED 4' Extreme Enclosure Narrow, 4000K, 2100 Lumens			•			8	60	•



## LXEM - LED Enclosed & Gasketed Luminaire

- IP65 & IP67 Rated
- Standard Ambient -20°C to 25°C
- DesignLights Consortium\*\*

Part Number	Catalog Number	UPC Code	Description	CA 03	GA 27	IL 06	PA 10	TX 04	Wt. each	# on Pallet	DLC QPL
93055613	LXEM4-35ML-RFA-EU	078531123666	LED 4' Vapor Tight, 3500K, 4900 Lumens			•		•	14.0	55	•
93060768	LXEM4-40HL-RFA-EDU	078531124700	LED 4' Vapor Tight, 4000K, 6000 Lumens			•	•		14.0	55	•
93056144	LXEM4-40ML-RFA-EDU	078531123932	LED 4' Vapor Tight, 4000K, 4900 Lumens	•		•	•	•	14.0	55	•
93061875	LXEM8-40ML-RFA-EDU	078531125189	LED 8' Vapor Tight, 4000K, 9850 Lumens			•	•		30.0	45	•



### 10-Day Quick Ship Ordering Guide

Order Limit Per Fixture Selection: 50

LXEM		SIZE	COLOR TEMP	LUMEN OUTPUT	SHIELDING	DRIVER	VOLTAGE	OPTIONS
LXEM	LED Enclosed and Gasketed	4 4' 8 8'	35 3500K 40 4000K	LW Low Watt ML Medium Lumen HL High Lumen VL Very High Lumen	RFA Ribbed Frosted Acrylic	E Fixed Output ED 0-10V Dimming ED1 0-10V 1% Dimming	U 120V-277V	SSL Stainless Steel Tamper Resistant Ready Latches TP Tamper Proof Latches ELL14 Emergency Battery Pack Installed, 1400 Lumens



### XEM - Low Profile Enclosed/Gasketed Industrials

- IP65 All Sizes
- IP67, 4' and 8'
- Standard Ambient -20°C to 25°C
- T8, T5 and T5HO Fluorescent

Part Number	Catalog Number	UPC Code	Description	CA 03	GA 27	IL 06	PA 10	TX 04	Wt. each	# on Pallet
93049168	XEM4-232-RA-EU	078531023720	Vapor Tight 2-4' T8, 4'; 120-277V T8 Elec Ballast, Fiberglass Housing	•	•	•	•	•	14.0	55
93049169	XEM8-232-RA-4EU	078531023737	Vapor Tight 4-4' T8, 8'; 120-277V 4-L T8 Elec Ballast, Fiberglass Housing			•		•	29.0	45

### 10-Day Quick Ship Ordering Guide

Order Limit Per Fixture Selection: 50

**XEM** - **2**

MODEL	SIZE	NO. OF LAMPS IN CROSS SECTION	LAMP TYPE	BALLAST	VOLTAGE	OPTIONS
<b>XEM</b> Low Profile Enclosed and Gasketed Fiberglass Industrial	4 4' 8 8'	2 Two	<b>32</b> 4', T8 1 <b>48T8HO</b> 4', T8HO: 44 Watt <b>96T8</b> 8', T8: 59 Watt <b>96T8HO</b> 8', T8HO: 86 Watt	<b>E</b> Electronic T8, Instant Start <b>4E</b> 4-Lamp Electronic T8, Instant Start <b>EP</b> Electronic, Programmed Start <b>4EP</b> 4-Lamp Electronic, Programmed Start	<b>U</b> 120V-277V <b>347</b> 347V (T8 only)	<b>TP</b> Tamper Proof Screws <b>SSL</b> Stainless Steel Latches
			<b>LENS TYPE</b> <b>RA</b> Ribbed Acrylic (Standard)	<b>BALLAST FACTOR</b> <b>Blank</b> 0.88BF (Standard)		

### Accessories

Part Number	Catalog Number	UPC Code	Description	CA 03	GA 27	IL 06	PA 10	TX 04	Wt. each	# on Pallet
FK14	FK14	078531000745	1x4 Flange Kit	•	•	•	•	•	5.0	N/A
FK22	FK22	078531000752	2x2 Flange Kit	•	•	•	•	•	5.0	N/A
FK24	FK24	078531038991	2x4 Flange Kit	•	•	•	•	•	5.0	N/A
GLH5	GLH5	078531012700	5' Adjustable Cable Kit	•	•	•	•	•	0.3	N/A
GLH10	GLH10	078531013127	10' Adjustable Cable Kit	•	•	•	•	•	0.4	N/A
980000011000000	S18	078531000790	18" Stem and Canopy	•	•	•	•	•	8.0	N/A
980000010000000	SS18	078531003456	18" Stem only	•	•	•	•	•	5.0	N/A



### CCL - Center-Lens Troffer

- Architectural appearance
- IC Rated
- Up to 118 LPW
- Recessed mount
- DesignLights Consortium\*\*

Part Number	Catalog Number	UPC Code	Description	CA 03	GA 27	IL 06	PA 10	TX 04	Wt. each	# on Pallet	DLC QPL
93077477	CCL22-3335	078531127503	2X2 LED Center Lens Troffer, 3300 Lumens, 3500K, 0-10V Dimming Driver	•	•				15.0	40	•
93077478	CCL22-3340	078531127510	2X2 LED Center Lens Troffer, 3300 Lumens, 4000K, 0-10V Dimming Driver	•	•				15.0	40	•
93077479	CCL24-5035	078531127527	2X4 LED Center Lens Troffer, 5000 Lumens, 3500K, 0-10V Dimming Driver	•	•				20.0	20	•
93077480	CCL24-5040	078531127534	2X4 LED Center Lens Troffer 5000 Lumens, 4000K, 0-10V Dimming Driver	•	•				20.0	20	•



### CSL - Striplight

- Narrow profile (2 1/4")
- Up to 112 LPW
- Surface mount on wall or ceiling
- DesignLights Consortium\*\*

Part Number	Catalog Number	UPC Code	Description	CA 03	GA 27	IL 06	PA 10	TX 04	Wt. each	# on Pallet	DLC QPL
93075541	CSL4-4035	078531127442	4ft LED Striplight, 4000 Lumens, 3500K, 0-10V Dimming Driver	•	•				4.9	120	•
93075542	CSL4-4040	078531127459	4ft LED Striplight, 4000 Lumens, 4000K, 0-10V Dimming Driver	•	•				4.9	120	•
93075543	CSL8-8035	078531127466	8ft LED Striplight, 8000 Lumens, 3500K, 0-10V Dimming Driver	•	•				10.8	120	•
93075544	CSL8-8040	078531127473	8ft LED Striplight, 8000 Lumens, 4000K, 0-10V Dimming Driver	•	•				10.8	120	•



### CWP - Wrap Luminaire

- Sturdy construction
- Up to 124 LPW
- Surface mount
- DesignLights Consortium\*\*

Part Number	Catalog Number	UPC Code	Description	CA 03	GA 27	IL 06	PA 10	TX 04	Wt. each	# on Pallet	DLC QPL
93075545	CWP4-4035	078531127480	4ft LED Wrap, 4000 Lumens, 3500K, 0-10V Dimming Driver	•	•				10.8	33	•
93075546	CWP4-4040	078531127497	4ft LED Wrap, 4000 Lumens, 4000K, 0-10V Dimming Driver	•	•				10.8	33	•

\*DesignLights Consortium® (DLC) qualified. Please refer to the DLC website for specific product qualifications at www.designlights.org

\*DesignLights Consortium® (DLC) qualified. Please refer to the DLC website for specific product qualifications at www.designlights.org

