

Rail Mount Fuseholders and Circuit Breakers



NDNF1-WH

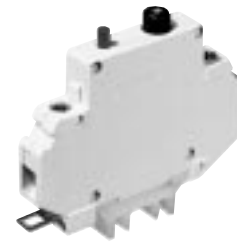
Ratings: 30A, 600V; UL/CSA
Number of Poles: 1
Fuse Size: 1³/₃₂" × 1¹/₂"
 (KTK-R, FNQ-R or LP-CC).
Circuit Jumper: JF1, 2 circuits
Wire Size: AWG #8-22 CU
Mounting Options: 35mm DIN rail, C-rail
Marking Tape: MT12-1/2
Torque Rating: 18 in/lb max.
Operating Temperature: 105°C
NDNF1 Colors: WH - White
Fuse Pullers (Optional):
 PF1
 Lighted neon or incandescent – LPF-(Voltage rating)
 LPF1-24
 LPF1-120
 LPF1-120-C
 LPF1-220
 LPF1-440



NDNLFD1

Ratings:
 NDND1: 30A, 600V; UL/CSA (non-fused)
 NDNFD1: 15A, 600V/CSA (fused)
 NDNLFD1*: 15A, 600V (fused)
Number of Poles: 1
Fuse Size: 1/4" × 1 1/4"
 (Buss® AGC, MDL or equivalent.)
Circuit Jumper: JF1, 2 circuits
Wire Size: AWG #8-22 CU
Mounting Options: 35mm DIN rail, C-rail
Marking Tape: MT12-1/2
Torque Rating: 18 in/lb max.
Operating Temperature: 105°C
Extension: WH - White
 *WH24 - 24V White
 (Only available with NDNLFD1)

CE



UB Series

Ratings: .5 - 15A, 250VAC/65VDC; UL*/CSA/VDE
 *For 9A - 15A units, UL voltage ratings: 125VAC/65VDC
Number of Poles: 1
Max. Interrupt Cap.: 200A, but not over 100 times rated current.
Life: 4,000 cyc. 200% rated current; 6,000 cyc. rated current
Dielectric Strength: 1,500 VAC
Insulation Resist: 100 Megohms
Mounting Options: 35mm DIN rail, C-rail (Adapter required for C-rail, Part No. UBA-CR).
Weight: 3.2 oz.

Part Numbering System

UB □ □ □ □ - **BN**

Series	Amperage
	001 - 150
	(.1A - 15A)

