

B3132 - Two-Bolt Underground Clamp

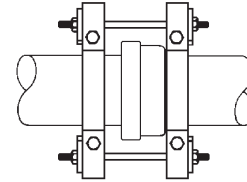
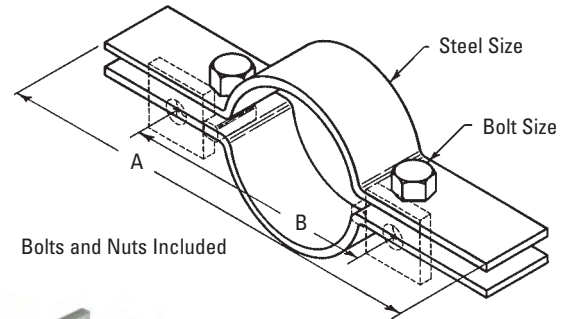
Size Range: 4" (100mm) thru 24" (600mm) pipe

Material: Steel

Function: Clamp is used for underground A.W.W.A. cast iron and ductile iron water pipe to prevent joints from separating. The O.D. of the A.W.W.A. pipe is shown in the data table.

Finish: Plain. Contact customer service for alternative finishes and materials.

Order By: Part number, pipe size and outside diameter of pipe. Order B3132W lugs, tie rods and hex nuts separately.



Part No.	Pipe Size in. (mm)	A in. (mm)	B in. (mm)	Clamp I.D. in. (mm)	Steel Size in. (mm)	Bolt Size	Approx. Wt./100 Lbs. (kg)
B3132-4	4" (100)	12 ⁷ / ₈ " (327.0)	9 ³ / ₄ " (247.6)	5" (127.0)	1/2" x 2" (12.7 x 50.8)	5/8"-11 x 3"	864 (391.9)
B3132-6	6" (150)	14 ³ / ₄ " (374.6)	12" (304.8)	7 ¹ / ₁₆ " (179.4)	1/2" x 2" (12.7 x 50.8)	5/8"-11 x 3"	1020 (462.6)
B3132-8	8" (200)	17 ¹ / ₄ " (438.1)	14 ¹ / ₄ " (361.9)	9 ³ / ₁₆ " (233.4)	1/2" x 2" (12.7 x 50.8)	5/8"-11 x 3"	1222 (554.3)
B3132-10	10" (250)	19 ³ / ₈ " (492.1)	16 ¹ / ₂ " (419.1)	11 ³ / ₈ " (288.9)	1/2" x 2" (12.7 x 50.8)	5/8"-11 x 3"	1409 (639.1)
B3132-12	12" (300)	21 ⁷ / ₈ " (555.6)	18 ⁷ / ₈ " (479.4)	13 ¹ / ₂ " (342.9)	1/2" x 2" (12.7 x 50.8)	5/8"-11 x 3"	1608 (729.4)
B3132-14	14" (350)	26" (660.4)	22 ¹ / ₄ " (565.1)	15 ³ / ₄ " (400.0)	3/4" x 3" (19.0 x 76.2)	7/8"-9 x 4 ¹ / ₂ "	4359 (1977.2)
B3132-16	16" (400)	28 ³ / ₈ " (720.7)	24 ⁵ / ₈ " (625.5)	17 ⁷ / ₈ " (454.0)	3/4" x 4" (19.0 x 101.6)	1"-8 x 4 ¹ / ₂ "	6403 (2904.4)
B3132-18	18" (450)	31 ³ / ₈ " (796.9)	27 ⁵ / ₈ " (701.7)	20" (508.0)	3/4" x 4" (19.0 x 101.6)	1 ¹ / ₄ "-7 x 5"	7293 (3308.1)
B3132-20	20" (500)	33 ¹ / ₂ " (850.9)	29 ³ / ₄ " (755.6)	22 ¹ / ₈ " (562.0)	3/4" x 4 ¹ / ₂ " (19.0 x 114.3)	1 ¹ / ₄ "-7 x 5"	8778 (3981.7)
B3132-24	24" (600)	39" (990.6)	35 ¹ / ₄ " (895.3)	26 ³ / ₈ " (669.9)	3/4" x 5" (19.0 x 127.0)	1 ¹ / ₄ "-6 x 5 ¹ / ₂ "	11659 (5288.5)

B3132W - Lug Washer

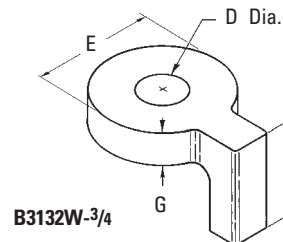
Size Range: 3/4" (20mm) thru 1¹/₂" (40mm) rod

Material: Cast Iron for B3132W-3/4, steel for other sizes

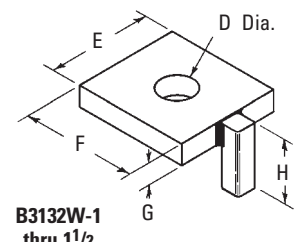
Function: Used with B3132 to secure tie rods. The projecting lug bears against the clamp bolt to prevent washer and tie rod from slipping off clamp.

Finish: Plain. Contact customer service for alternative finishes and materials.

Order By: Part number, rod size and finish



B3132W-3/4



B3132W-1
thru 1¹/₂



Part No.	Tie Rod Size	Use With Pipe Size in. (mm)	Dia. in. (mm)	E in. (mm)	F in. (mm)	G in. (mm)	H in. (mm)	Approx. Wt./100 Lbs. (kg)
B3132W-3/4	3/4"-10	4"-12" (100-300)	7/8" (22.2)	23/8" (60.3)	-- --	5/8" (15.9)	15/8" (41.3)	74 (33.7)
B3132W-1	1"-8	14"-16" (350-400)	1 1/8" (28.6)	3 1/2" (88.9)	3 1/2" (88.9)	5/8" (15.9)	2 1/2" (63.5)	207 (93.9)
B3132W-1 1/4	1 1/4"-7	18" (450)	1 3/8" (34.9)	3 1/2" (88.9)	4" (101.6)	5/8" (15.9)	3 1/2" (63.5)	236 (107.0)
B3132W-1 3/8	1 3/8"-6	20" (500)	1 1/2" (38.1)	4" (101.6)	4 1/4" (107.9)	5/8" (15.9)	4" (101.6)	231 (104.8)
B3132W-1 1/2	1 1/2"-6	24" (600)	1 5/8" (41.3)	4" (101.6)	4 3/4" (120.6)	5/8" (15.9)	4" (101.6)	259 (117.5)

All dimensions in charts and on drawings are in inches. Dimensions shown in parentheses are in millimeters unless otherwise specified.

Pipe Clamps

B3134 - Double Bolt Underground Socket Clamp

Size Range: 4" (100mm) thru 24" (600mm) pipe

Material: Steel

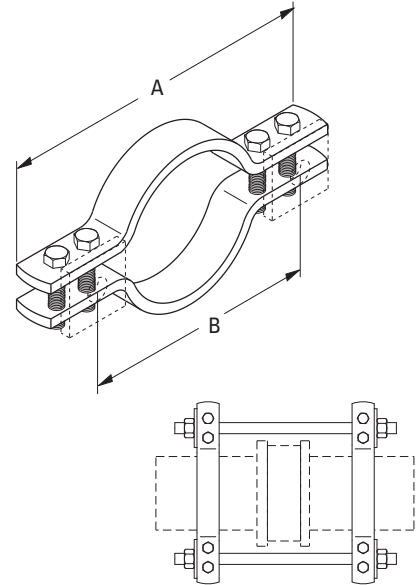
Function: Clamp is used for underground A.W.W.A. cast iron and ductile iron water pipe to prevent joints from separating. The O.D. of the A.W.W.A. pipe is shown in the data table.

Approvals: Conforms to National Fire Protection Association (NFPA) Pamphlet 24, 4" (100mm) thru 12" (300mm) pipe sizes.

Finish: Plain. Contact customer service for alternative finishes and materials.

Order By: Part number, pipe size and outside diameter of pipe.

Order B3134W plate washers, tie rods and hex nuts separately.



Part No.	Pipe Size in. (mm)	A in. (mm)	B in. (mm)	Bolt Size	B3134 Washer Size)	Approx. Wt./100 lbs. (kg)
B3134-4	4.80" (121.9)	14 ¹ / ₁₆ " (357.2)	9 ⁵ / ₁₆ " (236.5)	5/8"-11	B3134W-3/4	1275 (578.3)
B3134-6	6.90" (175.3)	16 ⁷ / ₁₆ " (417.5)	11 ¹¹ / ₁₆ " (298.9)	5/8"-11	B3134W-3/4	1455 (660.0)
B3134-8	9.05" (229.9)	19 ⁵ / ₈ " (498.5)	14 ⁷ / ₈ " (442.6)	5/8"-11	B3134W-3/4	2350 (1065.9)
B3134-10	11.10" (281.9)	21 ¹³ / ₁₆ " (554.0)	17 ¹ / ₁₆ " (433.4)	3/4"-10	B3134W-3/4	2925 (1326.8)
B3134-12	13.20" (335.3)	24 ¹ / ₂ " (622.3)	19 ¹ / ₄ " (488.9)	7/8"-9	B3134W-1	4030 (1828.0)
B3134-14	15.30" (388.6)	26 ¹⁵ / ₁₆ " (684.2)	21 ¹¹ / ₁₆ " (550.9)	7/8"-9	B3134W-1	5385 (2442.6)
B3134-16	17.40" (441.9)	30 ³ / ₄ " (781.0)	24 ³ / ₄ " (628.6)	1"-8	B3134W-1 ¹ / ₈	7645 (3467.8)
B3134-18	19.50" (495.3)	34 ⁵ / ₁₆ " (871.5)	27 ⁵ / ₁₆ " (693.7)	1 ¹ / ₄ "-7	B3134W-1 ¹ / ₄	9425 (4275.2)
B3134-20	21.60" (548.6)	36 ⁵ / ₈ " (930.3)	29 ⁵ / ₈ " (752.5)	1 ¹ / ₄ "-7	B3134W-1 ¹ / ₂	10975 (4978.2)
B3134-24	25.80" (655.3)	42 ¹ / ₈ " (1070.0)	34 ³ / ₈ " (873.1)	1 ¹ / ₂ "-6	B3134W-1 ¹ / ₂	14865 (6742.6)

B3134W - Plate Washer

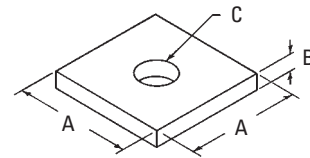
Size Range: 3/4"-10 thru 1¹/₂"-6 rod

Material: Steel

Function: Used with B3134 to secure tie rods.

Finish: Plain. Contact customer service for alternative finishes and materials.

Order By: Part number, rod size and finish



Part No.	Tie Rod Size	A in. (mm)	B in. (mm)	Hole Size C in. (mm)	Approx. Wt./100 lbs. (kg)
B3134W-3/4	3/4"-10	3" (76.2)	1/2" (12.7)	7/8" (22.2)	120 (54.4)
B3134W-1	1"-8	3 ¹ / ₂ " (88.9)	1/2" (12.7)	1 ¹ / ₈ " (28.6)	157 (71.2)
B3134W-1 ¹ / ₈	1 ¹ / ₈ "-7	3 ¹ / ₂ " (88.9)	5/8" (15.9)	1 ¹ / ₄ " (31.7)	194 (88.0)
B3134W-1 ¹ / ₄	1 ¹ / ₄ "-7	3 ¹ / ₂ " (88.9)	3/4" (19.0)	1 ³ / ₈ " (35.8)	230 (104.3)
B3134W-1 ¹ / ₂	1 ¹ / ₂ "-6	3 ¹ / ₂ " (88.9)	3/4" (19.0)	1 ⁵ / ₈ " (41.2)	240 (108.8)



All dimensions in charts and on drawings are in inches. Dimensions shown in parentheses are in millimeters unless otherwise specified.

TOLCO™ Fig. 4A - Pipe Clamp for Sway Bracing

Size Range: 4" (100mm) thru 8" (200mm) pipe.
For sizes smaller than 4" (100mm) use B3140.

Material: Steel

Function: For bracing pipe against sway and seismic disturbance.

Approvals: Underwriters Laboratories Listed in the USA (UL) and Canada (cUL) 4" (100mm) thru 8" (200mm). Included in our Seismic Restraints Catalog approved by the State of California Office of Statewide Health Planning and Development (OSHDP).

Installation Instructions: The Fig. 4A is the "braced pipe" attachment component of a longitudinal, lateral or riser brace assembly. It is intended to be combined with the "bracing pipe" and B-Line/TOLCO transitional and structural attachment component(s) to form a complete bracing assembly. NFPA 13 and/or OSHDP guidelines should be followed.

To Install: Place the Fig. 4A over the pipe to be braced. Attach TOLCO transitional fitting, either Fig. 980, 910 or 909, to the clamp ears. Tighten bolts and nuts; torque requirement is a minimum of 50 ft./lbs. (68Nm). Transitional fitting attachment can pivot for adjustment to proper brace angle.

Finish: Plain. Contact customer service for alternative finishes and materials.

Order By: Part number, pipe size and finish

Component of State of
California OSHDP Approved
Seismic Restraints System

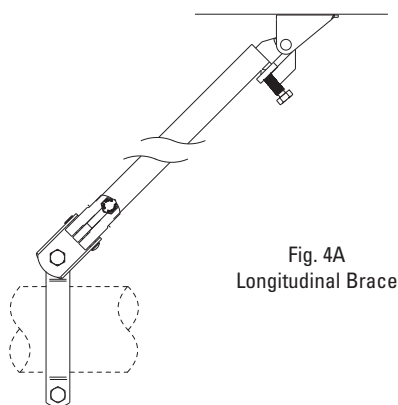
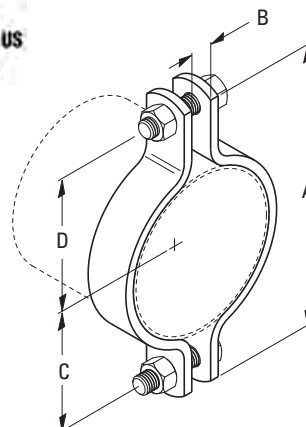


Fig. 4A
Longitudinal Brace

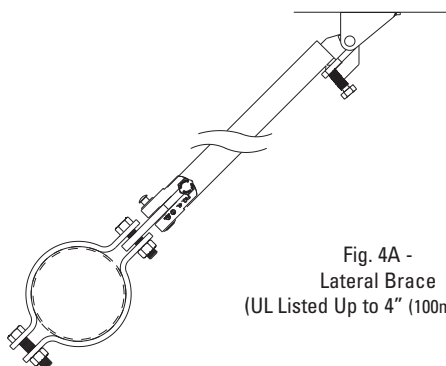


Fig. 4A -
Lateral Brace
(UL Listed Up to 4" (100mm) IPS)

Part No.	Pipe Size in. (mm)	A in. (mm)	B in. (mm)	C in. (mm)	D in. (mm)	Bolt Size	Max. Horizontal Design Load lbs. (kN)	Approx. Wt./100 lbs. (kg)
4A-4	4" (100)	8 1/2" (215.9)	9/16" (14.3)	3 3/8" (85.7)	3 11/16" (93.7)	1/2"-13	2015 (8.96)	221 (100.2)
4A-5	5" (125)	9 3/4" (247.6)	9/16" (14.3)	3 7/8" (98.4)	4 3/8" (111.1)	1/2"-13	2015 (8.96)	253 (114.7)
4A-6	6" (150)	11 1/2" (292.1)	5/8" (15.9)	5" (127.0)	5 1/8" (130.2)	1/2"-13	2015 (8.96)	513 (232.7)
4A-8	8" (200)	13 1/4" (336.5)	3/4" (19.0)	6 11/16" (169.9)	6 1/8" (155.6)	1/2"-13	2015 (8.96)	601 (272.6)

Eaton's B-Line series seismic bracing components are designed to be compatible only with other B-Line series bracing components, resulting in a listed seismic bracing assembly. Eaton B-Line Division warranty for seismic bracing components will be the warranty provided in Eaton B-Line Division standard terms and conditions of sale made available by Eaton, except that, in addition to the other exclusions from Eaton B-Line Division warranty, Eaton makes no warranty relating to B-Line series seismic bracing components that are combined with products not provided by Eaton.

All dimensions in charts and on drawings are in inches. Dimensions shown in parentheses are in millimeters unless otherwise specified.