

## INTRODUCTION

Read and understand all instructions before beginning installation.

**NOTICE:** For installation by a licensed electrician in accordance with National and/or local Electrical Codes and the following instructions.

Confirm device ratings are suitable for application prior to installation. Use of device in applications beyond its specified ratings or in applications other than its intended use may cause an unsafe condition and will void manufacturer's warranty.

Use only approved materials and components (i.e. wire nuts, electrical box, etc.) as appropriate for installation.

**NOTICE:** Do not install if product appears to be damaged.

**SAVE THESE INSTRUCTIONS!**

### DESCRIPTION

The Hubbell Control Solutions' NX Dry Contact Module (NXDCIO) provides the means to incorporate dry contact inputs and outputs into the NX Control System. The NXDCIO requires the NXHDI Network Device Interface Module to provide the means of connection to the NX HubbNET™ network.

## INSTALLATION

1. Open the NXDCIO kit box. Make sure all the necessary parts are there. It should include the following: NXHDI Module, NXDCIO, Power Supply, Din Rails & Screws, Metal Enclosure and Enclosure Cover. See Fig 1, 2.
2. Screw in the two Din Rail tracks inside the enclosure.
3. Snap the NXHDI onto the upper DIN Rail track, on the right side.
4. Snap the NXDCIO module onto the upper DIN rail track in the enclosure to the left side of the NXHDI Network Device Interface Module. See Fig 3
5. Plug the ribbon cable supplied with the unit into the matching connector on the NXHDI module
6. Connect the dry contact inputs on the IO ports. Note: The relay side is to be connected to the dry contact outputs. See Fig 4.
7. Snap the NX Power Supply on the lower DIN Rail track. Make sure to connect the 24VDC power leads to the NXHDO. See Fig 4. The power supply itself needs the input AC power 120/277V 50/60 Hz.



Figure 1

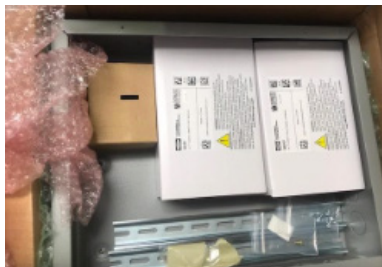


Figure 2



**Figure 3**

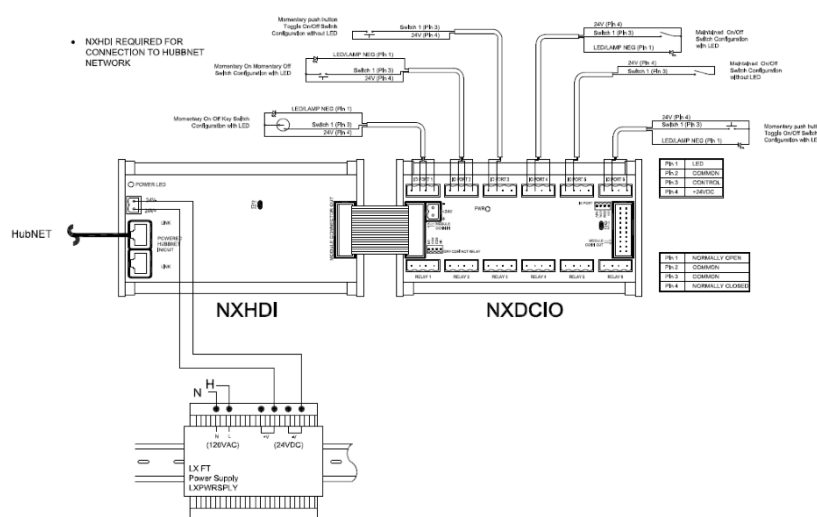


Figure 4

72-00663