

# WALL MOUNT INSTRUCTIONS FOR CYLINDERS



## CAUTION: Risk of Fire or Electric Shock

LED Surface, Pendant & Cable Mounted Cylinder installation requires knowledge of luminaire electrical systems. If not qualified, do not attempt installation. Contact a qualified person.

### IMPORTANT SAFETY INSTRUCTIONS

This fixture must be installed in accordance with local, federal codes and the NEC.

1. Read all instructions completely before beginning. Keep these instructions in safe place for future reference.
2. To reduce risk of fire and over-heating, make sure all connections are tight.
3. Turn off the electrical power before proceeding.

## For Wall Mounting:

Step ❶: Remove set screw from top of wall bracket to release mounting plate.

Step ❷: Remove mounting plate.

Step ❸: Pull wire leads through center hole of plate and secure mounting plate to wall using lag screws (provided).

\*\*Plate may be mounted directly to junction box, provided junction box is securely mounted to structure.

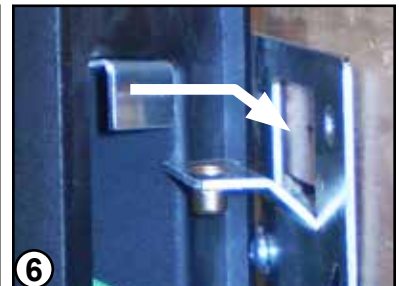
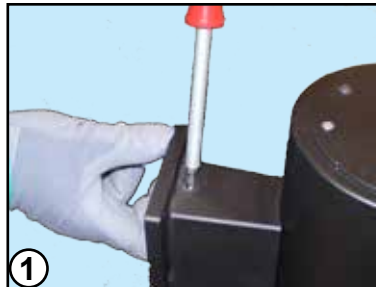
Step ❹: Remove wire access cover (2 screws) from wall bracket exposing leads.

Step ❺❻: Set cylinder on to mounting plate, sliding hook over locking bracket. Replace set screw, securing cylinder to wall.

Step ❼: Make all wiring connections. To ensure proper wiring, see wiring diagrams on next page.

Step ❽: Push wires into wiring compartment and replace wire access cover.

Step ❾: Insert trim into housing until trim flange seats firmly against housing. Installation is complete.

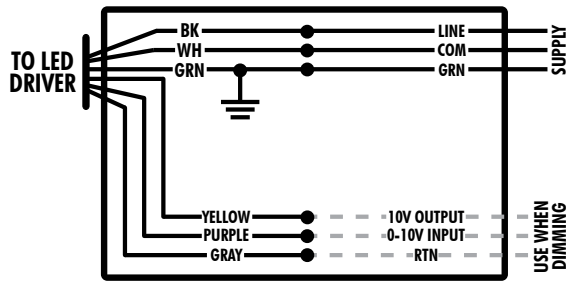


Product Services Phone (888) 387-2212

1300 South Wolf Road • Des Plaines, IL 60018 • Phone 800-323-5068 • [www.junolightinggroup.com](http://www.junolightinggroup.com)

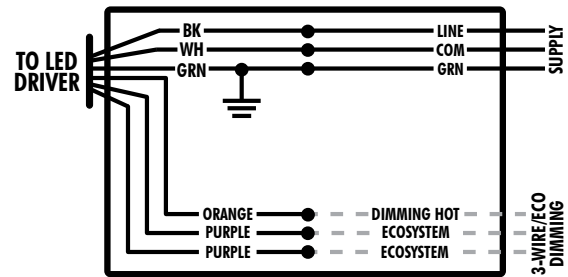
# WIRING DIAGRAMS

**120/277V WIRING DIAGRAM  
0-10V DIMMING**



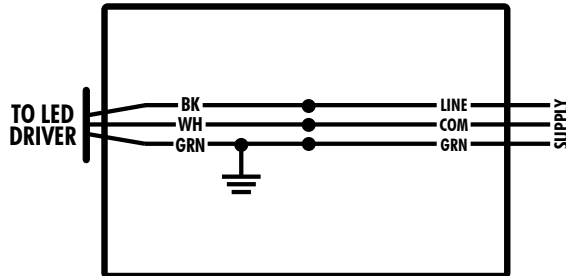
**JUNCTION BOX**

**120/277V WIRING DIAGRAM  
LUTRON ECOSYSTEM DIMMING**



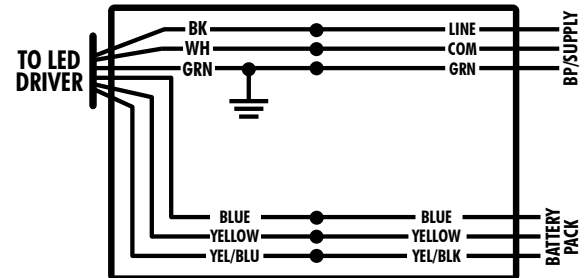
**JUNCTION BOX**

**120V WIRING DIAGRAM  
LUTRON FORWARD PHASE DIMMING**



**JUNCTION BOX**

**120/277V WIRING DIAGRAM  
BODINE BATTERY PACK**



**JUNCTION BOX**

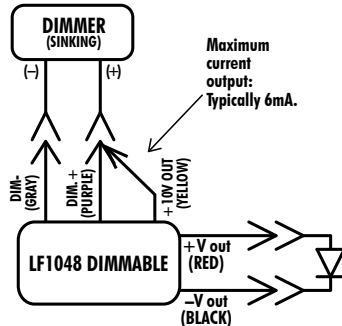
## FOR USE WITH MAGTECH DRIVERS ONLY

### DIMMER: SINKING APPLICATION

Note: LF1048 driver provides 10V output

#### SINGLE LIGHT FIXTURE APPLICATION

0-10v Fluorescent Dimmer

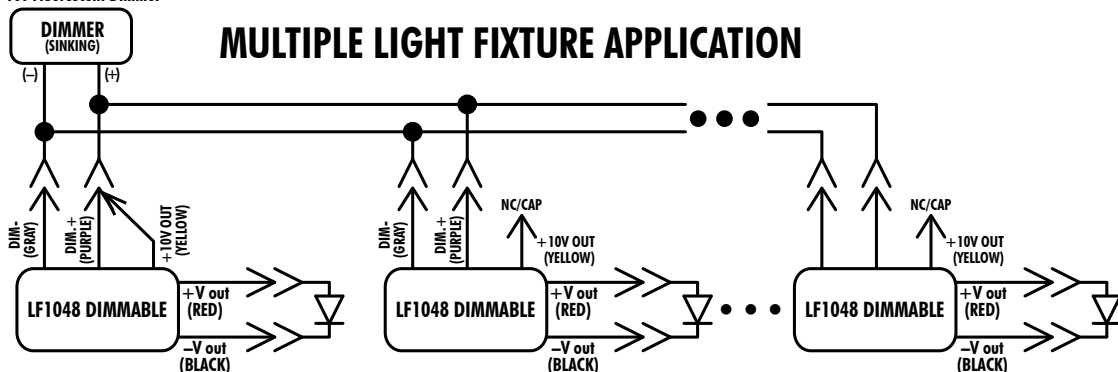


Maximum  
current  
output:  
Typically 6mA.

NOTE: This information is for reference only.  
Number of drivers connected on one line  
depends on many factors. Consult dimmer's  
manufacturer for more information.

0-10v Fluorescent Dimmer

#### MULTIPLE LIGHT FIXTURE APPLICATION



Advisory: Only one +10V out (yellow wire) used or needed to operate multiple LF1048 drivers.

Product Services Phone (888) 387-2212

1300 South Wolf Road • Des Plaines, IL 60018 • Phone 800-323-5068 • [www.junolightinggroup.com](http://www.junolightinggroup.com)



JUNCO LIGHTING GROUP  
an AcuityBrands company