

Meter Mounting Equipment

Consolidated Edison



MILBANK®





Charles A. Milbank
1879-1966



Bill Martin



Robert F. Waldrop,
1922-2002



Robert F. Waldrop, II
Chairman



Katrina Waldrop Henke
CEO

Milbank–Quality Metering Products for over 75 Years

Milbank Manufacturing Company was established in 1927 by Charles A. Milbank. Originally, the company manufactured high voltage switches; however, by 1941 Milbank devoted itself primarily to the manufacture of sheet metal enclosures and related equipment for the electrical generation and distribution industry. Today we are an industry leader in the manufacture of electrical meter sockets. Through a national network of manufacturer's representatives we provide wholesale electrical distributors with quality electrical products for the utility, contractor, industrial and OEM markets.

As the meter standards have changed, Milbank has been successful in adapting its product line to these changes. Our full scale engineering department designs products to meet customer specifications and satisfy all utility requirements.

Milbank's employee base of over 1,000 with our five manufacturing facilities comprising almost 550,000 square feet gives us the flexibility to schedule, produce, and ship orders quickly. Currently, Milbank manufactures over 10,000 different catalog items, and this list continues to grow. Our unique product offering includes: Residential & Commercial Meter Sockets; Residential & Commercial Meter Pedestals; RV/MH Power Outlets, Pedestals, and Transformers; Commercial & Industrial Electrical Enclosures; Circuit Breakers; Disconnects & Safety Switches; Safety Sockets; Utility & Residential Secondary Pedestals; Hubs and related accessories. If you don't find a unit in this catalog to service your needs, send us your specifications and we will be happy to work with you.

Our success has come from a loyal customer base that can rely on us to build quality products at

a fair price in a timely manner. Our willingness and ability to design and produce new products to meet our customer demands is an important factor to remain competitive in today's electrical market.

Milbank has been serving the electric utility & wholesale distribution industries for over 75 years with innovative, quality engineered products. So remember us for all of your meter mounting and related requirements, and we will be happy to serve you as we have in the past—with dependable service and quality products!

We take great pride in being one of the few family-owned businesses left in our industry. We are a third generation run business and truly believe that...

***FAMILY MAKES A
DIFFERENCE!***

DISCONNECTS (30-200 AMP)	
30 & 60 AMP–FUSIBLE / NON FUSIBLE A/C DISCONNECT	4
AC DISCONNECT / 20 AMP GFCI COMBINATION	5
50 AMP SPA BOX WITH GFCI PROTECTION	5
METERING	
100 & 200 AMP–SINGLE POSITION–5 TERMINAL–RESIDENTIAL	6
200 AMP–5 & 7 TERMINAL–RINGLESS–LEVER BYPASS	7
CT RATED	
20 AMP–13 TERMINAL–RING TYPE	8
MULTIPLE POSITION	
2 POSITION–125 AMP / POSITION–CONTINUOUS–5 TERMINAL–RING-TYPE	9
2 & 3 POSITION–100 AMP / POSITION–CONTINUOUS–5 TERMINAL–RING-TYPE	9
TRANS-S CABINETS	
200 / 400 AMP–600 VAC–3Ø	10
400 / 800 AMP–600 VAC–3Ø	10
SERVICE END BOXES	
INDOOR & OUTDOOR APPLICATION	11
MISCELLANEOUS	
ACCESSORIES	12-13
OTHER MILBANK PRODUCTS	14-15

INDEX:

CAT. NO.	PG	CAT. NO.	PG
5T8K2	12	MR-4	13
6003	13	MR-8	13
6116	13	S8324	12
A7514	12	SA-10105-SC1-SP1	11
A7515	12	SA-10105-SC3R-SP	11
A7516	12	SA-24128-SC1-SP1	11
A7517	12	SA-24128-SC3R-SP	11
A7518	12	SA-301812-SC1-SP1	11
A7551	12	SA-301812-SC3R-SP	11
A8110	12	U1854-XL-QG-BLG-LI	7
A8111	12	U3042-XL-QB-BLG-LI	7
A8112	12	U3522-XL-5T-K3-BLG	9
A9064	12	U3800	4
CP-21	13	U3803	4
K1047	13	U3806	4
K1190	13	U3822-20GR	5
K1350	12	U4382-XL-5T-BLG	9
K1539	12	U4383-XL-5T-BLG	9
K1540	12	U4467-XL-KK-BLG	6
K1541	12	U4518-XL-TG-5T	6
K3082	12	U4808-X-BLG	10
K3083	12	U4809-X-BLG	10
K3441	12	U4881-O	5
K3442	12	U4881-O-50GB	5
K3865	12	U4881-O-60GB	5
K3866	12	U5713-XL-5T-K3-BLG	9
K4200	12	U5714-XL-5T-K3-BLG	9
K4223	12	U5715-XL-5T-K3-BLG	9
K4977-INT	12	U5723-X-5T-K3-BLG	9
K5T	12	U5724-X-5T-K3-BLG	9
K5022-INT	12	U5725-X-5T-K3-BLG	9
K8180	13	U7490-XL-TG-5TW	6
M5-144	13	UC4660-O-21-BLG	8
MR-2	13	UC4718-O-21-BLG	8



U3800
(No deadfront required)



U3803



U3806

PROFILE

Milbank's air conditioner disconnect has a removable hinged cover which makes wiring a breeze. Our compact design meets all wire bending space requirements in the NEC and, also, complies with article 440-14 in the NEC. To insure the safest conditions, we designed our disconnect pullers to be removable or they may be reinstalled in the off position. Another safety feature is the padlock provision on the front cover. As with all Milbank products, our enclosure is constructed of G90U galvanized steel and finished with an attractive, light gray, baked powder coating. Our state of the art finish combines epoxy and polyester hybrid resins into a hybrid powder coating which is then electrostatically applied. This offers a durable, nonfading finish.

TECHNICAL INFORMATION

AMP	TYPE	CATALOG NUMBER	MAX H.P.	WT. @ #	LINE & LOAD WIRE RANGE		GROUND WIRE RANGE	DIMENSIONS			WIRE RATING	
					CU	AL		D"	W"	H"	CU °C	AL °C
30	FUSIBLE	U3803	3	3.7	#14-#2 AWG	#12-#2 AWG	#12-2 AWG	3	5	9 1/4	60°/75°	60°
60	FUSIBLE	U3806	10	3.7	#14-#2 AWG	#12-#2 AWG	#12-2 AWG	3	5	9 1/4	60°/75°	60°
60	NONFUSIBLE	U3800	10	3.25	#14-#2 AWG	#12-#2 AWG	#14-4 AWG	3	5	8	60°/75°	60°/75°

✓ U/L listed as Enclosed Pullout Switch

✓ Removable Cover

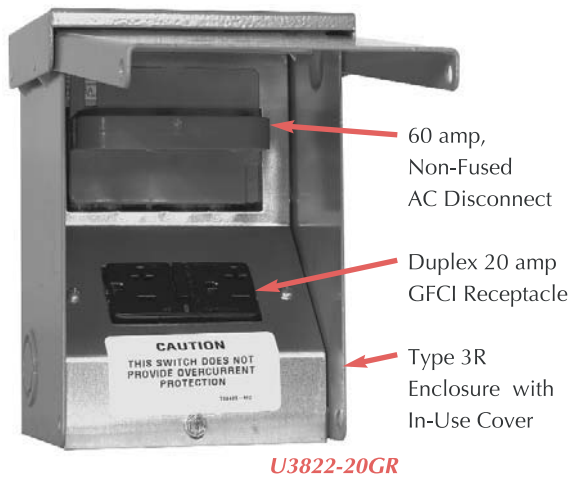
✓ 1Ø, 240 VAC

✓ Type 3R Rainproof

✓ Six one-inch concentric knockouts

Utility requirements for this equipment may vary. Always consult the serving utility for their requirements before ordering or installing equipment in this catalog.

Combination AC Disconnect / 20 Amp GFCI Receptacle—Together in 1 Box



U3822-20GR

- Meets NEC # 210.63 Requirements *
- UL Listed as Power Outlet
- Type 3R Enclosure
- In-Use Cover**
- Duplex Ground Connector
- 1" Concentric Knockouts

AC DISCONNECT

- 1Ø, 240 Volt
- 60 amp, Non-Fused

GFCI RECEPTACLE

- 20 amp
- Reset/Test Button
- Padlock provision

* NEC® #210.63 Heating, Air-Conditioning and Refrigeration Equipment Outlet.

...The receptacle shall be located on the same level and within 7.5 m (25 ft.) of the heating, air-conditioning and refrigeration equipment.

* NEC® #210.08 Ground-Fault Circuit- Interruptor protection for personnel.

AMP	TYPE	CATALOG NUMBER	MAX H.P.	WT. @ #	LINE & LOAD CONNECTOR WIRE RANGE		GROUND CONNECTOR WIRE RANGE	DIMENSIONS			WIRE RATING	
					CU	AL	CU/AL	D"	W"	H"	CU °C	AL °C
60	NONFUSIBLE	U3822-20GR	10	6	#14-#2 AWG	#12-#2 AWG	#14-4 AWG	4.8	5.25	7.4	60°/75°	60°/75°

To ensure the safest conditions, Milbank disconnect pullers are designed to be reversible so they may be reinstalled in the OFF position. All units are designed with a padlock provision on the cover for security.

****Note:** U3822-20GR cover rated as *IN-USE COVER* (Cover may be closed with cords plugged into receptacle).

*Reprinted with permission from NFPA 70-2002, *National Electrical Code*®, Copyright 2001, National Fire Protection Association, Quincy, MA 02269. This reprinted material is not the complete and official position of the NFPA on the referenced subject, which is represented only by the standard in its entirety. National Electrical Code® and NEC® are registered trademarks of the National Fire Protection Association, Quincy, MA.

Hot Tub Disconnect or Sub Panel Breaker Enclosure—Type 3R

Spa Box with GFCI Protection

- 240 volt ground fault protection
- UL listed, Type 3R rainproof
- Milbank reliability
- Easy installation
- 2 pole, 50 amp GFCI breaker protection
- Compact size:
8-1/2" H x 7-1/2" W x 3-3/4" D
- 3 or 4 wire installation
- 1Ø, 120 / 240 VAC
- Standard package of 12
- 2 extra one-pole breaker spaces
- 100 amp overall rating

Sub Panel Breaker Enclosure

- Use as a 100 amp, 4 circuit sub panel enclosure
- U4881-O has provision for (2) 2-pole or (4) 1-pole small frame breakers



U4881-O-50GB



Utility requirements for this equipment may vary. Always consult the serving utility for their requirements before ordering or installing equipment in this catalog.

AMP	TYPE	CATALOG NUMBER	WT. @ #	LINE & LOAD CONNECTOR WIRE RANGE		GROUND CONNECTOR WIRE RANGE	DIMENSIONS		
				CU	AL	CU/AL	D"	W"	H"
—	BREAKER PROVISION	U4881-O	7	#14-1/0	#14-1/0	#14-1/0	3 3/4	7 1/2	8 1/2
50	BREAKER	U4881-O-50GB	8	#14-1/0	#14-1/0	#14-1/0	3 3/4	7 1/2	8 1/2
60	BREAKER	U4881-O-60GB	8	#14-1/0	#14-1/0	#14-1/0	3 3/4	7 1/2	8 1/2



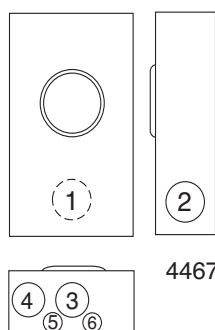
U4467-XL-KK-BLG



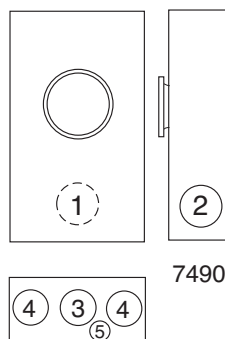
U7490-XL-TG-5TW



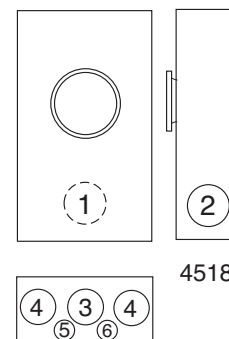
U4518-XL-TG-5T



4467



7490



4518

100 AMP—5 TERMINAL—RINGLESS

AMP	SERVICE	CATALOG NUMBER	HUB	CONNECTORS CU/AL		BY-PASS	DIMENSIONS			CONCENTRIC K.O.'S					
				LINE	LOAD		D"	W"	H"	1	2	3	4	5	6
100	OH/UG	U4467-XL-KK-BLG	C.P.	#6-2/0	#6-2/0	HORN	4 ¹ / ₈	11	15 ¹ / ₂	2 ¹ / ₂	2 ¹ / ₂	2 ¹ / ₂	2 ¹ / ₂	1 ¹ / ₄ , 1 ¹ / ₂	1 ¹ / ₄

INSULATED NEUTRAL: For field installed insulated neutral order as extra catalog number **K4474**.

CONNECTORS: Extruded aluminum connectors are tin plated. Units are supplied with duplex neutral.

FACTORY INSTALLED FIFTH TERMINAL: Includes factory installed fifth terminal in 9 o'clock position.

125 AMP—5 TERMINAL—RING TYPE

AMP	SERVICE	CATALOG NUMBER	HUB	CONNECTORS CU/AL		BY-PASS	DIMENSIONS			CONCENTRIC K.O.'S					
				LINE	LOAD		D"	W"	H"	1	2	3	4	5	6
125	OH/UG	U7490-XL-TG-5TW	C.P.	#6-350 kcmil	#6-350 kcmil	NONE	3 ⁵ / ₁₆	8	11 ¹ / ₂	1 ¹ / ₂	1 ¹ / ₂	2	1 ¹ / ₄	1 ¹ / ₄	—

FACTORY INSTALLED FIFTH TERMINAL: Includes factory installed fifth terminal in 9 o'clock position.

SEALING RING: Includes **MR-2** snap type sealing ring.

200 AMP—5 TERMINAL—RING TYPE

AMP	SERVICE	CATALOG NUMBER	HUB	CONNECTORS CU/AL		BY-PASS	DIMENSIONS			CONCENTRIC K.O.'S					
				LINE	LOAD		D"	W"	H"	1	2	3	4	5	6
200	OH/UG	U4518-XL-TG-5T	C.P.	#6-350 kcmil	#6-350 kcmil	NONE	4 ¹ / ₈	11	15 ¹ / ₂	2 ¹ / ₂	2 ¹ / ₂	2 ¹ / ₂	2 ¹ / ₂	1 ¹ / ₄ , 1 ¹ / ₂	1 ¹ / ₄

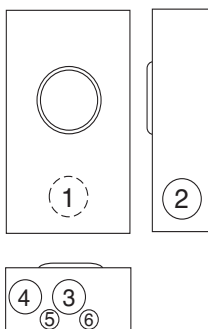
FACTORY INSTALLED FIFTH TERMINAL: Includes factory installed fifth terminal in 9 o'clock position.

SEALING RING: Includes **MR-2** snap type sealing ring.

Utility requirements for this equipment may vary. Always consult the serving utility for their requirements before ordering or installing equipment in this catalog.



U3042-XL-QG-BLG-LI



U1854-XL-QG-BLG-LI

METERING

200 AMP – RINGLESS – 5 & 7 TERMINAL – LEVER BYPASS

200 AMP—5 TERMINAL—RINGLESS—1Ø3W OR 3Ø3W

AMP	SERVICE	CATALOG NUMBER	HUB	CONNECTORS CU/AL		BY-PASS	DIMENSIONS			CONCENTRIC K.O.'S					
				LINE	LOAD		D"	W"	H"	1	2	3	4	5	6
200	OH/UG	U3042-XL-QG-BLG-LI	C.P.	#6-350 kcmil	#6-350 kcmil	LEVER	4 ⁷ / ₈	13	19	3	2 ¹ / ₂	3	3	1 ¹ / ₄	1 ¹ / ₂

HUBS: For proper hub selection see the hub suffix chart on the accessory page.

BYPASS: Lever on the 3042 supplies clamping action on meter spades and also operates bypass device.

INSULATED NEUTRAL: For field installed insulated neutral order as extra catalog number **K1047**.

BARREL LOCK (-BLG): Has provision for barrel lock with guard.

200 AMP—7 TERMINAL—RINGLESS—3Ø4W

AMP	SERVICE	CATALOG NUMBER	HUB	CONNECTORS CU/AL		BY-PASS	DIMENSIONS			CONCENTRIC K.O.'S					
				LINE	LOAD		D"	W"	H"	1	2	3	4	5	6
200	OH/UG	U1854-XL-QG-BLG-LI	C.P.	#6-350 kcmil	#6-350 kcmil	LEVER	4 ⁷ / ₈	13	19	3	2 ¹ / ₂	3	3	1 ¹ / ₄	1 ¹ / ₂

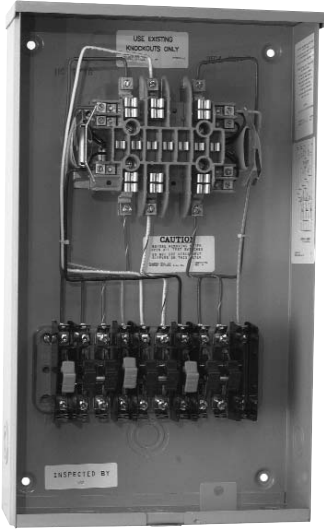
HUBS: For proper hub selection see the hub suffix chart on the accessory page.

BYPASS: Lever supplies clamping action on meter spades and also operates bypass device.

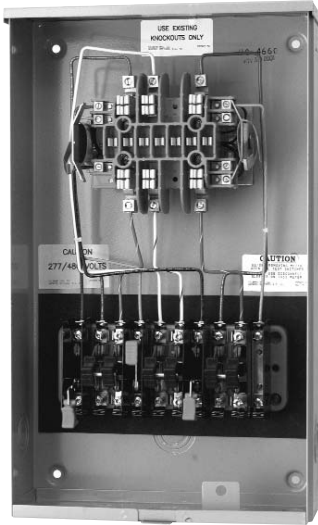
INSULATED NEUTRAL: For field installed insulated neutral order as extra catalog number **K1047**.

BARREL LOCK (-BLG): Has provision for barrel lock with guard.

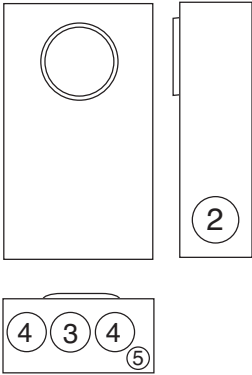
Utility requirements for this equipment may vary. Always consult the serving utility for their requirements before ordering or installing equipment in this catalog.



UC4718-O-21-BLG
(Shown prewired with
Milbank test switch)



UC4660-O-21-BLG
(Shown prewired with
Milbank test switch)



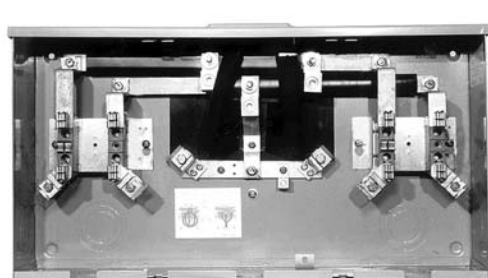
20 AMP-1 PIECE COVER-RINGLESS-13 TERMINAL-FACTORY PREWIRED-TRANSFORMER RATED SOCKET

NO. OF TERMS.	CATALOG NUMBER	HUB	CONNECTOR CU	BY- PASS	DIMENSIONS			CONCENTRIC K.O.'S					
					D"	W"	H"	1	2	3	4	5	6
13	UC4718-O-21-BLG	NONE	#14 - #2 MAX	NONE	4 ¹ / ₈	12	20	—	1 ¹ / ₄	1 ¹ / ₄	1 ¹ / ₄	1 ¹ / ₄ , 1 ¹ / ₂	—
13	UC4660-O-21-BLG	NONE	#14 - #2 MAX	NONE	4 ¹ / ₈	12	20	—	1 ¹ / ₄	1 ¹ / ₄	1 ¹ / ₄	1 ¹ / ₄ , 1 ¹ / ₂	—

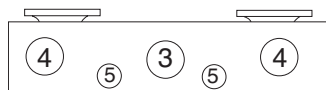
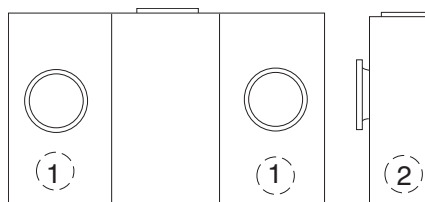
BARREL LOCK (-BLG): Has provision for barrel lock with guard.

Utility requirements for this equipment may vary. Always consult the serving utility for their requirements before ordering or installing equipment in this catalog.

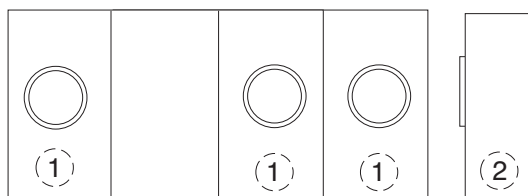




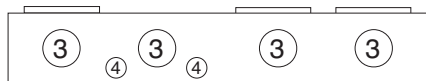
U3522-XL-K3-5T-BLG



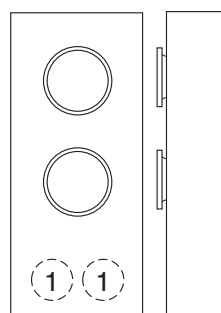
3522



5713-6



5723-5



4383



U4383-XL-5T-BLG

3, 4 & 5 POSITION-100 AMP / POSITION-CONTINUOUS-5 TERMINAL-RING-TYPE

NO. OF POS.	SERVICE	CATALOG NUMBER	HUB	CONNECTOR CU/AL		BY-PASS	DIMENSIONS			CONCENTRIC K.O.'S					
				LINE	LOAD		D"	W"	H"	1	2	3	4	5	6
3	OH/UG	U5713-XL-5T-K3-BLG	C.P.	#4-600 kcmil	#6-2/0	NONE	4½	39½	14	1½	1½	2½	¼, ½	—	—
4	OH/UG	U5714-XL-5T-K3-BLG	C.P.	#4-600 kcmil	#6-2/0	NONE	4½	49½	14	1½	1½	2½	¼, ½	—	—
5	OH/UG	U5715-XL-5T-K3-BLG	C.P.	#4-600 kcmil	#6-2/0	NONE	4½	59½	15	1½	1½	2½	¼, ½	—	—

2 POSITION-125 AMP / POSITION-CONTINUOUS-5 TERMINAL-RING-TYPE

NO. OF POS.	SERVICE	CATALOG NUMBER	HUB	CONNECTOR CU/AL		BY-PASS	DIMENSIONS			CONCENTRIC K.O.'S					
				LINE	LOAD		D"	W"	H"	1	2	3	4	5	6
2	OH/UG	U3522-XL-5T-K3-BLG	C.P.	#4-600 kcmil	#6-2/0	NONE	4½	24½	14	1½	1½	2½	2½	¼, ½	—

SEALING RINGS: Ring type units are supplied with **MR-4** screw type sealing ring as standard.

2 & 3 POSITION-100 AMP / POSITION-CONTINUOUS-5 TERMINAL-RING-TYPE

NO. OF POS.	SERVICE	CATALOG NUMBER	HUB	CONNECTOR CU/AL		BY-PASS	DIMENSIONS			CONCENTRIC K.O.'S					
				LINE	LOAD		D"	W"	H"	1	2	3	4	5	6
2	OH/UG	U4382-XL-5T-BLG	C.P.	#6-300 kcmil	#6-2/0	NONE	4¾	12	21½	2	—	2	2	—	—
3	OH/UG	U4383-XL-5T-BLG	C.P.	#6-350 kcmil	#6-2/0	NONE	4¾	12	31½	2	—	2	2	—	—

3, 4 & 5 POSITION-200 AMP / POSITION-CONTINUOUS-5 TERMINAL-RING-TYPE

NO. OF POS.	SERVICE	CATALOG NUMBER	HUB	CONNECTOR CU/AL		BY-PASS	DIMENSIONS			CONCENTRIC K.O.'S					
				LINE	LOAD		D"	W"	H"	1	2	3	4	5	6
3	OH/UG	U5723-X-5T-K3-BLG	C.P.	#4-600 kcmil	#6-350	NONE	5⅞	39½	14	2½	2½	3	2½	1	¼
4	OH/UG	U5724-X-5T-K3-BLG	C.P.	#4-600 kcmil	#6-350	NONE	5⅞	50⅞	16	2½	2½	3	2½	1	¼
5	OH/UG	U5725-X-5T-K3-BLG	C.P.	#4-600 kcmil	#6-350	NONE	5⅞	63½	16	2½	2½	3	2½	1	¼

HUBS: For proper hub selection, see the hub suffix chart in accessories.

SEALING RINGS: Ring type units **U4382** & **U4383** are supplied with **MR-2** snap type sealing ring as standard. The **U5723-5** units are supplied with **MR-4** screw type sealing ring as standard.

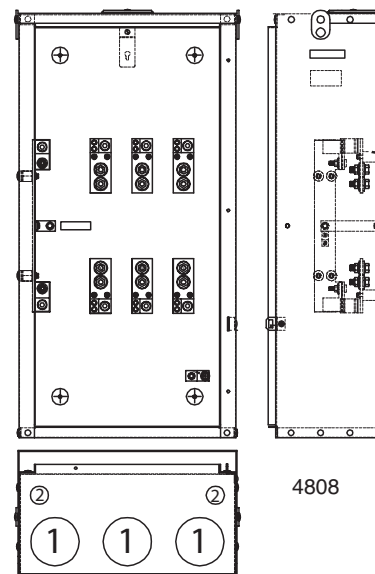
Utility requirements for this equipment may vary. Always consult the serving utility for their requirements before ordering or installing equipment in this catalog.



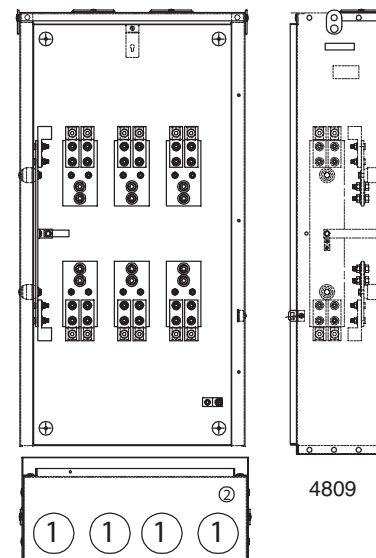
U4808-X-BLG



U4809-XT-BLG



4808



4809

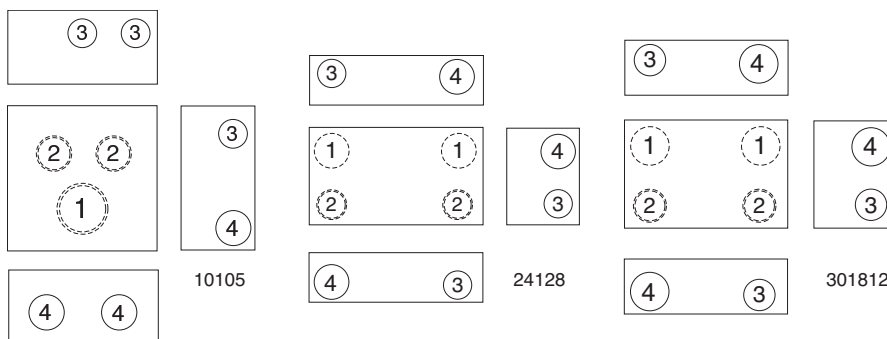
- Designed to be used with built-in socket base meters
- 200 / 400 or 400 / 800 amp maximum, 600 VAC
- 3Ø4W
- For indoor or outdoor use—rainproof Type 3R enclosure
- Prewired from top of test switch to meter socket base. Wiring “pig tail” provided from bottom of test switch into CT compartment (to be completed at time of CT installation)
- Ringless metering enclosure is totally isolated from CT compartment
- Lugs provided—rated single 600 kcmil - #4 awg
- Cabinets are constructed from code gauge galvanized steel
- Tin plated bus bar is mounted on standoff insulators
- Right side of cabinets allow clearance for conductors
- Short circuit current withstand capability is 50K symmetrical amps
- Furnished with 1/2" - 13 studs, washers and hex nuts with conical sems for CT mounting

CATALOG NUMBER	SERVICE	AMP	DIMENSIONS			CONCENTRIC KOs	
			W"	H"	D"	1	2
U4808-X-BLG	3Ø	200/400	21	41	10	4	1 1/4
U4809-XT-BLG	3Ø	400/800	26	51	10	4	1 1/4

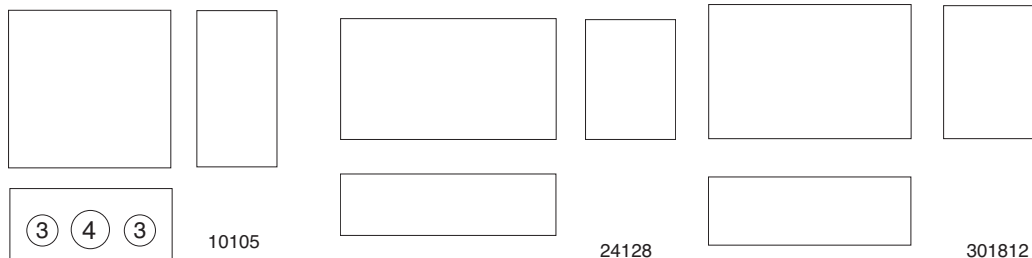
Utility requirements for this equipment may vary. Always consult the serving utility for their requirements before ordering or installing equipment in this catalog.



INDOOR



OUTDOOR



INDOOR:

Application

- Designed for use as a junction box or pull box
- For indoor use to provide protection against contact with enclosed equipment where moisture and dust are not a problem

Construction

- Enclosure and cover are manufactured from 16, 14, or 12 gauge steel
- Available with or without knockouts. Add **-NK** to catalog number for no-knockouts
- Available with or without paint. Add **-NP** to catalog number for no paint. Note: Unpainted enclosures are made from galvanized steel
- Covers have teardrop slots for easy installation and are attached to body with plated screws
- Grounding emboss provided with green plated grounding screw
- Holes are incorporated into the back of enclosure for mounting

Finish

- ANSI 61 gray polyester powder coating inside and out unless otherwise specified

OUTDOOR:

Application

- Designed for use as a junction box or pull box
- For outdoor use to provide protection against rain, sleet or snow, or indoors where dripping water is a problem

Construction

- Enclosure and cover are manufactured from 16, 14, or 12 gauge G90U galvanized steel
- The cover is designed to fit under the drip shield top, held in place with a plated steel screw
- Available with or without paint. Add **-NP** to catalog number for no paint.
- Boxes are available with or without concentric knockouts on the bottom. Add **-NK** to catalog number for no-knockouts
- Mounting embosses are provided on the back of each enclosure
- Sealing provisions on the front cover

Finish

- ANSI 61 gray polyester powder coating over phosphatized G90U galvanized steel

INDOOR / OUTDOOR USE	CATALOG NUMBER	DIMENSIONS			CONCENTRIC KO'S					
		D"	W"	H"	1	2	3	4	5	6
INDOOR	SA-10105-SC1-SP1	5	10	10	3	2	1½	2	—	—
INDOOR	SA-24128-SC1-SP1	8	24	12	4	3½	3½	4	—	—
INDOOR	SA-301812-SC1-SP1	12	30	18	4	3½	3½	4	—	—
OUTDOOR	SA-10105-SC3R-SP*†	5	10	10	—	—	1½	2	—	—
OUTDOOR	SA-24128-SC3R-SP†	8	24	12	—	—	—	—	—	—
OUTDOOR	SA-301812-SC3R-SP†	12	30	18	—	—	—	—	—	—

Accessories (contact factory):

- Replacement cover
- Touch-up paint
- Cylinder lock (outdoor only)

Utility requirements for this equipment may vary. Always consult the serving utility for their requirements before ordering or installing equipment in this catalog.

† Brooks barrel guard assembly packed inside and tied to barrel lock angle

* Hub – 1-1/2" hub assembly packed inside

INTERCHANGEABLE UNIT HUBS

REMOVABLE HUB
CLOSING PLATE

SIZE	SUFFIX	CAT. #
STANDARD (for -RL opening)	-XL	A7551
LARGE (for -R opening)	-X	A9064

SMALL "RL"
OPENING (STANDARD)

SUFFIX	SIZE	MILBANK NO.
-WL	1"	A7514
-YL	1 1/4"	A7515
-ZL	1 1/2"	A7516
-DL	2"	A7517
-EL	2 1/2"	A7518

LARGE "R"

OPENING (HEAVY DUTY)

SUFFIX	SIZE	MILBANK NO.
-F	3"	A8110
-G	3 1/2"	A8111
-H	4"	A8112

HUB ADAPTER PLATE
(Converts -R opening to -RL)
S8324

FIFTH TERMINALS

"PLUG-IN"
FIFTH TERMINAL
5T8K2
(fits round hole)NEW STYLE
FIFTH TERMINAL
K5T
(fits square hole)*HEAVY DUTY FIFTH
TERMINAL
K3865
(K3866 without
neutral wire)
*Both kits for units
manufactured after
August, 1992

SUFFIX CHART

SUFFIX	DESCRIPTION
-O	Plain Top
-RL	Small Unit Hub Opening
-R	Large Unit Hub Opening
-XL	Small Closing Plate
-X	Large Closing Plate
-RXL	Large Unit Hub Opening adapted to small Closing Plate
-RRL	Large Unit Hub Opening adapted to small Hub Opening

Utility requirements for this equipment may vary. Always consult the serving utility for their requirements before ordering or installing equipment in this catalog.

CONNECTOR KITS

CONNECTOR KITS FOR USE WITH
1/2"-13 STUDS TYPE UNITS ONLY

TYPE	CATALOG #	(4 per set) – 3 Ø
SINGLE	K4200	600 kcmil (MAX)
TWIN	K4223	350 kcmil (MAX)

SINGLE
For use with 3/8"-16
stud type units only

SINGLE CONNECTOR KITS

SUFFIX	CATALOG #	(3 per set) – 1 Ø
-K1	K1539	350 kcmil (MAX)
-K3	K1540	600 kcmil (MAX)

SUFFIX	CATALOG #	(4 per set) – 3 Ø
-K5	K3082	350 kcmil (MAX)
-K7	K3441	600 kcmil (MAX)

TWIN

For use with 3/8"-16
stud type units only

TWIN CONNECTOR KITS

SUFFIX	CATALOG #	(3 per set) – 1 Ø
-K2	K1350	350 kcmil (MAX)
-K4	K1541	600 kcmil (MAX)

SUFFIX	CATALOG #	(4 per set) – 3 Ø
-K6	K3442	350 kcmil (MAX)
-K8	K3083	600 kcmil (MAX)

TAP CONNECTORS
(3 per set)

K4977-INT INTERNAL HEX
K5022-INT INTERNAL HEX

(K5022 Includes Safety
Barrier Extensions—for appli-
cations over 300 VAC)

TRIPLEX GROUND



K1190

(For factory installed triplex ground add suffix **-TG** to the catalog number.)

ISOLATED NEUTRAL KIT



K1047

BYPASS LINK



K8180

(Bypass links are sold in pairs)

PLUG-IN BREAKER COMPATIBILITY CHART

AMPS	MILBANK	CUTLER-HAMMER (WESTINGHOUSE / BRYANT)	SIEMENS (ITE)	SIEMENS MURRAY / CROUSE-HINDS	G.E.	SQ-D
125-200	—	BR / BJ / HQP	—	MD	Q LINE	—
≤ 100	—	QUICKLAG P / BR / HQP	QP	MP	Q LINE	HOMELINE

Utility requirements for this equipment may vary. Always consult the serving utility for their requirements before ordering or installing equipment in this catalog.

DISCONNECT SLEEVE



M5-144

SEALING RINGS



**SNAP ACTION
MR-2**



**SCREW TYPE
MR-4**

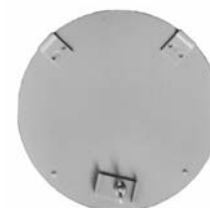


**BUCKLE
TYPE
MR-8**

CLOSING PLATES



**METER CLOSING PLATE
(Gray Plastic)
6003**



**METAL CLOSING PLATE
(For ringless sockets)
CP-21**

**METER CLOSING PLATE
(Clear Plastic)
6116**

***“Ask your local Milbank Enclosure Distributor
for the current Milbank Enclosure Catalog or
find it on-line at www.milbankmfg.com”***

Type 1 Enclosures

Screw Cover—SC1

Hinge Cover—HC1

Telephone Cabinet Covers—TSC

Telephone Cabinet Flush Mount Covers—TFLC

Type 3R Enclosures

Screw Cover—SC3R

Hinged Cover—HC3R

Telephone Cabinet Hinged Cover—TC3R

2 Door Current Transformer Cabinet—CT3R

Wireway—Type 1

Screw Cover Wireway—GSC1

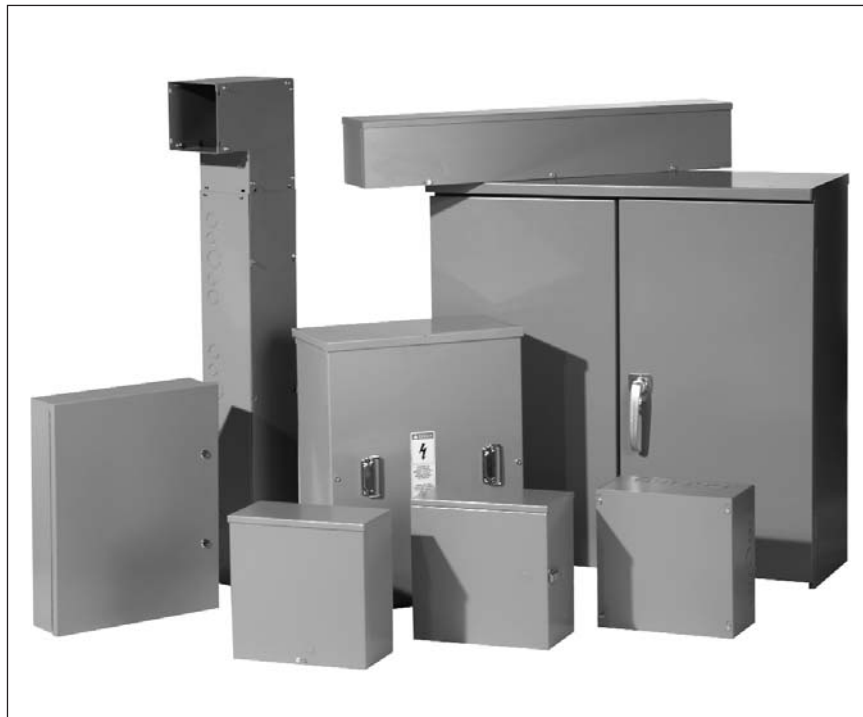
Hinged Cover Wireway—GHC1

Wireway—Type 3R

Screw Cover Wireway Trough—GSC3R

Miscellaneous

Accessories



COMMERCIAL METER PEDESTAL

The commercial pedestal is a pad mounted, weatherproof meter pedestal which contains an underground utility pull section, a utility meter section, and a customer compartment with pull section.

Typical uses are street and area lighting control, pump and irrigation control, remote power, and temporary power needs.

It is designed to provide a vandal resistant enclosed meter socket and a customer section in a single enclosure. The three sections are isolated and can be padlocked and sealed for security. The customer section is designed to include distribution as well as control components. A deadfront is used to provide safety and protect interior parts.

The pedestal is UL listed as an Enclosed Industrial Control, suitable only for use as service equipment (File Number E113855.) Most units comply with EUSERC drawing #308.



ADDITIONAL MILBANK PRODUCTS

COMMERCIAL ENCLOSURES



Meter Mounting Equipment & More!

Commercial Electrical Enclosures

Residential & Commercial Metering

Disconnect Devices

Current Transformer Enclosures

RV/MH Pedestals

Power Outlets

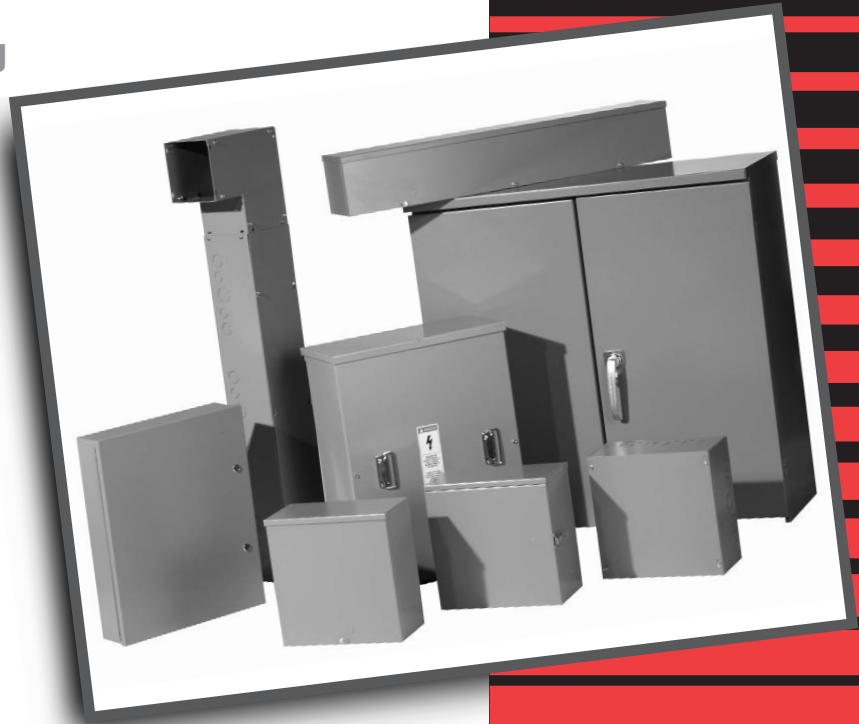
Circuit Breakers

Distribution Unit Substations

Enclosed Circuit Breakers

Safety Switches

Test Switches



KELLY & NOVIELLO ASSOCIATES, INC

65 Mahan Street

West Babylon, NY 11704-1303

Tel: 631-643-1100

Fax: 631-643-1125

MILBANK MFG. CO.

PO Box 419028

Kansas City, MO 64141-0028

Tel: 816.483.5314 Fax: 816.483.6357

www.milbankmfg.com

MILBANK®



www.milbankmfg.com

ConEd 08/05 (1.5K)