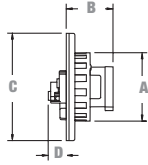
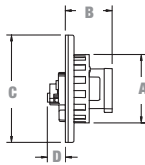


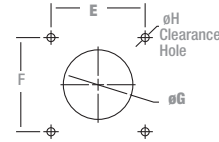
## UniGard® Series IP67 Dimensions



**Inlet IP67 16/20 A and 30/32 A**



**Inlet IP67 60/63 A and 100/125 A**

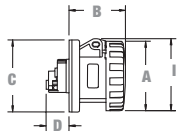


### Inlet IP67 16/20 A and 30/32 A

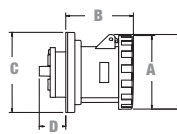
Cat. No.	A		B		C		D		E		F		G		H	
	in.	mm	in.	mm	in.	mm	in.	mm	in.	mm	in.	mm	in.	mm	in.	mm
<b>16/20A 2P3W</b>	2.87	73	1.96	50	4.50	114	0.75	19	3.87	98	3.87	98	3.0	76	0.282	7.2
<b>16/20A 3P4W</b>	3.17	81	1.96	50	4.50	114	0.75	19	3.87	98	3.87	98	3.03	77	0.282	7.2
<b>16/20A 4P5W</b>	3.48	88	1.96	50	4.50	114	0.75	19	3.87	98	3.87	98	3.5	89	0.282	7.2
<b>30/32A 2P3W</b>	3.66	93	2.32	59	4.50	114	1.32	34	3.87	98	3.87	98	3.5	89	0.282	7.2
<b>30/32A 3P4W</b>	3.66	93	2.32	59	4.50	114	1.32	34	3.87	98	3.87	98	3.5	89	0.282	7.2
<b>30/32A 4P5W</b>	3.96	101	2.32	59	4.50	114	1.32	34	3.87	98	3.87	98	3.75	95	0.282	7.2

### Inlet IP67 60/63A and 100/125A

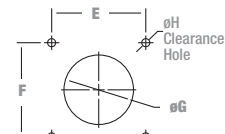
Cat. No.	A		B		C		D		E		F		G		H	
	in.	mm	in.	mm	in.	mm	in.	mm	in.	mm	in.	mm	in.	mm	in.	mm
<b>60/63A 2P3W</b>	4.41	112	3.44	87	4.50	114	1.68	43	3.87	98	3.87	98	3.5	89	0.282	7.2
<b>60/63A 3P4W</b>	4.41	112	3.44	87	4.50	114	1.68	43	3.87	98	3.87	98	3.5	89	0.282	7.2
<b>60/63A 4P5W</b>	4.41	112	3.44	87	4.50	114	1.68	43	3.87	98	3.87	98	3.5	89	0.282	7.2
<b>100/125A 3P4W</b>	5.06	129	3.88	99	5.50	140	1.94	49	4.87	124	4.87	124	4.5	114	0.282	7.2
<b>100/125A 4P5W</b>	5.06	129	3.88	99	5.50	140	1.94	49	4.87	124	4.87	124	4.5	114	0.282	7.2



**Receptacle IP67 16/20 A and 30/32 A**



**Receptacle IP67 60/63 A and 100/125 A**



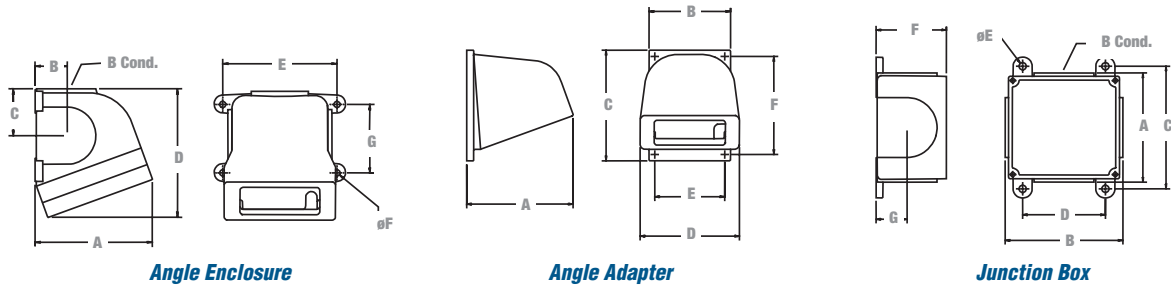
### Receptacle IP67 16/20 A and 30/32 A

Cat. No.	A		B		C		D		E		F		G		H		I	
	in.	mm	in.	mm	in.	mm	in.	mm	in.	mm	in.	mm	in.	mm	in.	mm	in.	mm
<b>16/20A 2P3W</b>	2.87	73	2.32	59	2.97	76	0.94	24	2.36	60	2.36	60	2.56	65	0.219	5.5	2.97	75
<b>16/20A 3P4W</b>	3.17	81	2.34	60	2.97	76	0.94	24	2.36	60	2.36	60	2.56	65	0.219	5.5	3.28	83
<b>16/20A 4P5W</b>	3.48	88	2.37	60	2.97	76	0.94	24	2.36	60	2.36	60	2.56	65	0.219	5.5	3.75	95
<b>30/32A 2P3W</b>	3.66	93	2.79	71	2.97	76	1.52	39	2.36	60	2.36	60	2.56	65	0.219	5.5	4.04	103
<b>30/32A 3P4W</b>	3.66	93	2.79	71	2.97	76	1.52	39	2.36	60	2.36	60	2.56	65	0.219	5.5	4.04	103
<b>30/32A 4P5W</b>	3.96	101	2.81	71	2.97	76	1.52	39	2.36	60	2.36	60	2.56	65	0.219	5.5	4.03	102

### Receptacle IP67 60/63 A and 100/125 A

Cat. No.	A		B		C		D		E		F		G		H		I	
	in.	mm	in.	mm	in.	mm	in.	mm	in.	mm	in.	mm	in.	mm	in.	mm	in.	mm
<b>60/63A 2P3W</b>	4.41	112	4.16	106	4.50	114	1.68	43	3.87	98	3.87	98	3.5	89	0.282	7.2	4.47	114
<b>60/63A 3P4W</b>	4.41	112	4.16	106	4.50	114	1.68	43	3.87	98	3.87	98	3.5	89	0.282	7.2	4.47	114
<b>60/63A 4P5W</b>	4.41	112	4.16	106	4.50	114	1.68	43	3.87	98	3.87	98	3.5	89	0.282	7.2	4.47	114
<b>100/125A 3P4W</b>	5.06	129	4.52	115	5.50	140	1.94	49	4.87	124	4.87	124	4.5	114	0.282	7.2	5.06	129
<b>100/125A 4P5W</b>	5.06	129	4.52	115	5.50	140	1.94	49	4.87	124	4.87	124	4.5	114	0.282	7.2	5.06	129

## UniGard® Series IP67 Dimensions



### 20° Angle Enclosures\*

Cat. No.	Conduit Size (in.)	Use	A		B		C		D		E		F		G	
			in.	mm	in.	mm	in.	mm	in.	mm	in.	mm	in.	mm	in.	mm
BE3-B75	3/4	20A and 30A Devices	3.34	85	0.97	25	1.12	28	4.12	105	4.00	102	0.25	6	2.38	60
BE3-B100	1	20A and 30A Devices	3.34	85	0.97	25	1.12	28	4.12	105	4.00	102	0.25	6	2.38	60
AE6-B125	1-1/4	60A Devices	5.13	130	1.41	36	2.05	52	5.62	143	5.00	127	0.28	7	3.00	76
AE6-B150	1-1/2	60A Devices	5.13	130	1.41	36	2.05	52	5.62	143	5.00	127	0.28	7	3.00	76
AE10-B150	1-1/2	100A Devices	7.05	179	1.81	46	2.68	68	6.88	175	5.50	140	0.34	9	4.00	102
AE10-B200	2	100A Devices	7.05	179	1.81	46	2.68	68	6.88	175	5.50	140	0.34	9	4.00	102

\* For use where there is no existing T&B Russellstoll JB Series junction box installed. For 20/30 A inlets, use 60A size.

### 20° Angle Adapters\*

Cat. No.	use	A		B		C		D		E		F	
		in.	mm	in.	mm	in.	mm	in.	mm	in.	mm	in.	mm
AA3	20A and 30A Devices	3.17	81	3.00	76	4.25	108	3.00	76	2.50	64	3.75	95
AA6L	60A Devices	5.23	133	4.00	102	5.43	138	4.88	124	3.44	87	4.81	122
AA10L	100A Devices	7.36	187	5.50	140	5.50	140	6.00	152	4.87	124	4.87	124

\* To be used with JB Series junction boxes or panel mount. For 20/30 A inlets, use 60 A size.

### Rectangular Junction Boxes\*

Cat. No.	Conduit Size (in.)	Use	A		B		C		D		E		F		G	
			in.	mm	in.	mm	in.	mm	in.	mm	in.	mm	in.	mm	in.	mm
JB3-B75	3/4	20A and 30A Devices	2.94	75	4.19	106	3.69	94	2.69	68	0.25	6	2.38	60	1.25	32
JB3-B100	1	20A and 30A Devices	2.94	75	4.19	106	3.69	94	2.69	68	0.25	6	2.38	60	1.25	32
JB6-B125	1-1/4	60A Devices	4.00	102	5.63	143	4.94	125	3.81	97	0.34	9	3.00	76	1.50	38
JB6-B150	1-1/2	60A Devices	4.00	102	5.63	143	4.94	125	3.81	97	0.34	9	3.00	76	1.50	38
JB10-B150	1-1/2	100A Devices	5.50	140	5.50	140	4.25	108	6.75	171	0.34	9	3.75	95	2.00	51
JB10-B200	2	100A Devices	5.50	140	5.50	140	4.25	108	6.75	171	0.34	9	3.75	95	2.00	51

\* Unless otherwise specified, junction boxes are furnished with one conduit size at location B. To be used with AA Series angle adapters. For 20/30 A inlets, use 60A size.