

SIGNAMAX

- Work Area
- Patch Panels
- Patch Cords
- Optical Fiber
- Support Infrastructure

CONNECTIVITY SOLUTIONS ESSENTIALS GUIDE



SIGNAMAX CONNECTIVITY SOLUTIONS

WORK AREA

Keystone Jacks	A1
Keystone Faceplates	A3
Keystone Faceplates, Boxes, & Mounting Modules	A4

PATCH PANELS & CROSS CONNECTS

Category 6A Patch Panels	B1
Category 6 Patch Panels	B2
Category 5e Patch Panels	B3
EC-Series Patch Panels	B4
Field-Configurable Patch Panels	B5
Feed-Thru Patch Panels	B6
Wall-Mount Patch Panels	B6

PATCH CORDS & CABLE ASSEMBLIES

Category 6A Patch Cords	C1
Category 6 Patch Cords	C2
Category 5e Patch Cords	C3
Modular Plugs & Accessories	C4

OPTICAL FIBER

High-Density Rack-Mount Optical Fiber Enclosures	D1
Optical Fiber Enclosures & Panels	D2
Optical Fiber Adapter Plates	D4
Premium Optical Fiber Patch Cords	D5
Optical Fiber Patch Cords	D6

SUPPORT INFRASTRUCTURE

Equipment Racks	E1
Equipment Brackets	E2
Patch Cord and Cable Management Panels	E2
Equipment Cabinets & Accessories	E3

KEEPING YOUR WORLD CONNECTED



Download
Our Full Catalog
&
Product Specifications
At
www.signamax.com

Stay Connected With Us



Establish a cabling infrastructure engineered to accommodate information systems that offers the flexibility, scalability, and universality for all types of implementation. From Category 6A, to 5e, to fiber optics, work area outlets, patch panels, cross-connect systems and much more, Signamax equips you with high-quality, high-performance solutions

Signamax Connectivity Solutions also provides:

- High performance-to-price ratio that maximizes ROI
- Pre-sale network design help, so you can choose the optimal solution
- An evolving line of products to meet emerging needs
- BICSI accredited training
- Certification programs that ensure a quality installation
- Post-sale support from US-based technical staff
- Warranties that provide peace of mind

Effectively adapt to the evolving future in a faster way, whether you are supporting a large enterprise, data center, or a small business infrastructure, Signamax offers the system solutions your organization requires.

Keystone Jacks

Category 6A MT-Series Unscreened Keystone Jacks

- Exceeds ANSI/TIA-568-C.2 component performance specifications
- Meets IEEE 802.3an 10 Gigabit Ethernet transmission requirements
- Eliminates alien crosstalk with solid-metal cable-retention cap
- Improved wire retention and ease of termination with rear 110 type contacts
- Circuit identification icons, dust covers, and 110 protection caps included in kit

PART NO.	DESCRIPTION
KJ458MT-C6AC	Category 6A MT-Series Keystone Jack, T568A/B Wiring, Light Ivory

For other colors add the following to P/N: -WH -DI -YE -OR -RD -BU -GN -GY -BK



Category 6 MT-Series Unscreened Keystone Jacks

- Exceeds TIA-568-C.2 component performance specifications
- Supports TIA-568-C.2 category 6 100 meter channel performance
- Improved wire retention and ease of termination with rear 110 type contacts
- Compatible with Signamax screened snap-in patch panels and work area faceplates
- Circuit identification icons, dust covers, and 110 protection caps included in kit

PART NO.	DESCRIPTION
KJ458MT-C6C	Category 6 MT-Series Keystone Jack, T568A/B Wiring, Light Ivory
KJ458MT25-C6C	Category 6 MT-Series Keystone Jack, T568A/B Wiring, Light Ivory, 25-Pack

For other colors add the following to P/N: -WH -DI -YE -OR -RD -BU -GN -GY -BK

Note: 25 pack not available in Dark Ivory (DI) or Gray (GY).



Category 5e MT-Series Unscreened Keystone Jacks

- Exceeds TIA-568-C.2 component performance specifications
- Supports TIA-568-C.2 category 5e 100 meter channel performance
- Improved wire retention and ease of termination with rear 110 type contacts
- Compatible with Signamax screened snap-in patch panels and work area faceplates
- Circuit identification icons, dust covers, and 110 protection caps included in kit

PART NO.	DESCRIPTION
KJ458MT-C5E	Category 5e MT-Series Keystone Jack, T568A/B Wiring, Light Ivory
KJ458MT25-C5E	Category 5e MT-Series Keystone Jack, T568A/B Wiring, Light Ivory, 25-Pack

For other colors add the following to P/N: -WH -DI -YE -OR -RD -BU -GN -GY -BK

Note: 25 pack not available in Dark Ivory (DI) or Gray (GY).



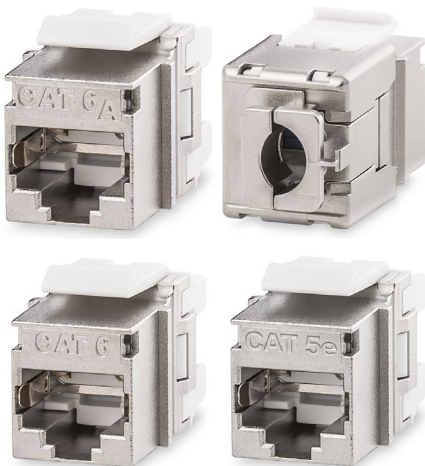
Keystone Jacks

Category 6A, 6, & 5e MT-Series Screened Keystone Jacks

- Exceeds ANSI/TIA-568-C.2 component performance specifications
- Meets IEEE 802.3an 10 Gigabit Ethernet transmission requirements
- Overall solid-metal shielding design for 360° screen coverage
- Improved wire retention and ease of termination with rear 110 type contacts
- Circuit identification icons and dust covers included in kit

PART NO.	DESCRIPTION
KJS458MT-C6AC	Category 6A MT-Series Screened Keystone Jack, T568A/B Wiring
KJS458MT-C6C	Category 6 MT-Series Screened Keystone Jack, T568A/B Wiring
KJS458MT-C5E	Category 5e MT-Series Screened Keystone Jack, T568A/B Wiring

Standard circuit identification icons/dust covers are Light Ivory. Additional color options sold separately.

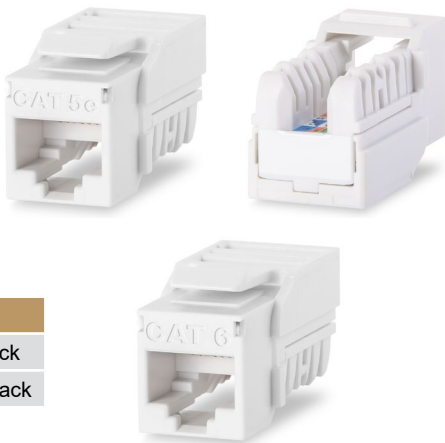


Category 6 & 5e EC-Series Keystone Jacks

- Exceeds ANSI/TIA-568-C.2 component performance specifications
- Supports TIA-568-C.2 category 6 & 5e 100 meter performance
- Slim profile for high density applications
- Improved conductor retention with 90° 110 termination
- Circuit identification icons and dust covers included in kit

PART NO.	DESCRIPTION
KJ458EC25-C6	Category 6 EC-Series Keystone Jack, T568A/B Wiring, Light Ivory, 25-pack
KJ458EC25-C5E	Category 5e EC-Series Keystone Jack, T568A/B Wiring, Light Ivory, 25-pack

For other colors add the following to P/N: -WH -YE -OR -RD -BU -GN -BK



Termination Tool for MT & EC-Series Keystone Jacks

- Compatible with all MT- and EC-Series keystone jacks
- Concurrent termination of all conductors with conductor excess trimming
- Calibrated die drive gives precise and consistent termination of all conductors
- Ergonomic design offers comfortable plastic handle, lightweight and compact design

PART NO.	DESCRIPTION
KJMT-8600	Multi-Pair Termination Tool for MT-Series Keystone Jacks
KJMT-8600-DS	Replacement Termination Die for KJMT-8600 Tool
KJEC-8600	Multi-Pair Termination Tool for EC-Series Keystone Jacks
KJEC-8600-DS	Replacement Termination Die for KJEC-8600 Tool



Keystone Faceplates

Single-Gang Faceplates

- High-impact thermoplastic & UL94V-0 flame-retardant construction
- Dimensions: 2.75" W (70 mm) x 4.5" H (114 mm) with screw spacing: 3.28" (83 mm)
- Refer to the compatibility chart at signamax.com – Work Area Outlet Systems

PART NO.	DESCRIPTION
SKF-1	1-Port Single-Gang Keystone Faceplate, Light Ivory
SKF-2	2-Port Single-Gang Keystone Faceplate, Light Ivory
SKF-3	3-Port Single-Gang Keystone Faceplate, Light Ivory
SKF-4	4-Port Single-Gang Keystone Faceplate, Light Ivory
SKF-6	6-Port Single-Gang Keystone Faceplate, Light Ivory
SKF-B	Blank Single-Gang Keystone Faceplate, Light Ivory

For other colors add the following to P/N: -WH -DI -GY -BK

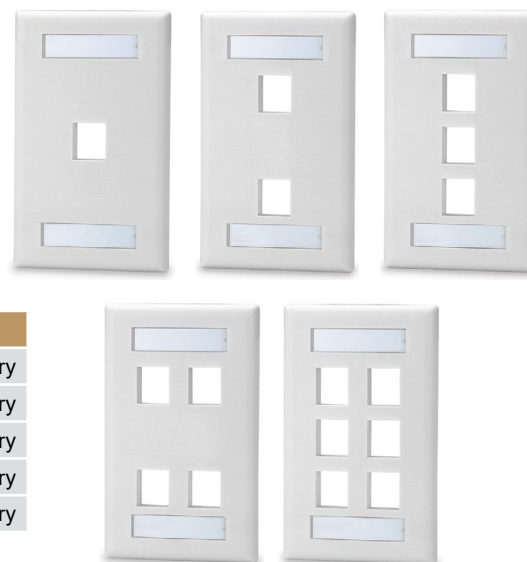


Single-Gang Faceplates with Labeling Windows

- High-impact thermoplastic & UL94V-0 flame-retardant construction
- Clear plastic covers with paper labels included (print templates available)
- Dimensions: 2.75" W (70 mm) x 4.5" H (114 mm) with screw spacing: 3.28" (83 mm)
- Refer to the compatibility chart at signamax.com – Work Area Outlet Systems

PART NO.	DESCRIPTION
SKFL-1	1-Port Single-Gang Keystone Faceplate w/Labeling Window, Light Ivory
SKFL-2	2-Port Single-Gang Keystone Faceplate w/Labeling Window, Light Ivory
SKFL-3	3-Port Single-Gang Keystone Faceplate w/Labeling Window, Light Ivory
SKFL-4	4-Port Single-Gang Keystone Faceplate w/Labeling Window, Light Ivory
SKFL-6	6-Port Single-Gang Keystone Faceplate w/Labeling Window, Light Ivory

For other colors add the following to P/N: -WH -DI -GY -BK



Double-Gang Faceplates

- High-impact thermoplastic & UL94V-0 flame-retardant construction
- Dimensions: 4.60" W (117 mm) x 4.5" H (114 mm) with screw spacing: 3.28" (83 mm)
- Refer to the compatibility chart at signamax.com – Work Area Outlet Systems

PART NO.	DESCRIPTION
DKF-6	6-Port Double-Gang Keystone Faceplate, Light Ivory
DKF-8	8-Port Double-Gang Keystone Faceplate, Light Ivory
DKF-12	12-Port Double-Gang Keystone Faceplate, Light Ivory

For other colors add the following to P/N: -WH -DI -GY -BK



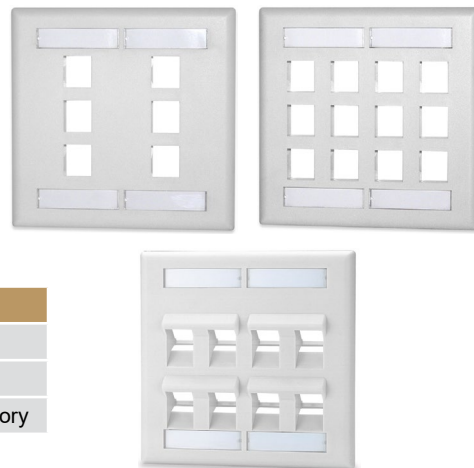
Keystone Faceplates, Boxes, & Mounting Modules

Double-Gang Faceplates with Labeling Windows

- High-impact thermoplastic & UL94V-0 fire-retardant construction
- Clear plastic covers with paper labels included (print templates available)
- Dimensions: 4.60" W (117 mm) x 4.5" H (114 mm) with screw spacing: 3.28" (83 mm)
- Refer to the compatibility chart at signamax.com – Work Area Outlet Systems

PART NO.	DESCRIPTION
DKFL-6	6-Port Double-Gang Keystone Faceplate w/Labeling Window, Light Ivory
DKFL-12	12-Port Double-Gang Keystone Faceplate w/Labeling Window, Light Ivory
DKFLA-8	8-Port Double-Gang Angled Keystone Faceplate w/Labeling Window, Light Ivory

For other colors add the following to P/N: -WH -DI -GY -BK

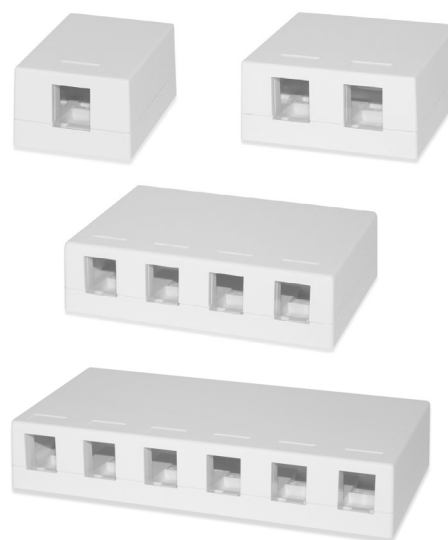


Keystone Surface Mount Multimedia Boxes

- Mix & match up to 6 copper, fiber, or other media types in one location
- High-impact thermoplastic & UL94V-0 flame-retardant construction
- Snap-on assembling cover design
- Low profile dimensions (1.2" H)
- Refer to the compatibility chart at signamax.com – Work Area Outlet Systems

PART NO.	DESCRIPTION
SMKL-1	1-Port Surface-Mount Multimedia Box, Light Ivory
SMKL-2	2-Port Surface-Mount Multimedia Box, Light Ivory
SMKL-4	4-Port Surface-Mount Multimedia Box, Light Ivory
SMKL-6	6-Port Surface-Mount Multimedia Box, Light Ivory

For other colors add the following to P/N: -WH -DI -GY -BK



Keystone Jack DIN-Rail Mounting Modules

- DIN-Rail mountable design with removable lids for multiple module installation in one continuous row
- Swinging cassette with latching design allows quick installation & removal
- Clear plastic labeling window
- Front hinged hatch provides jack protection when not in use

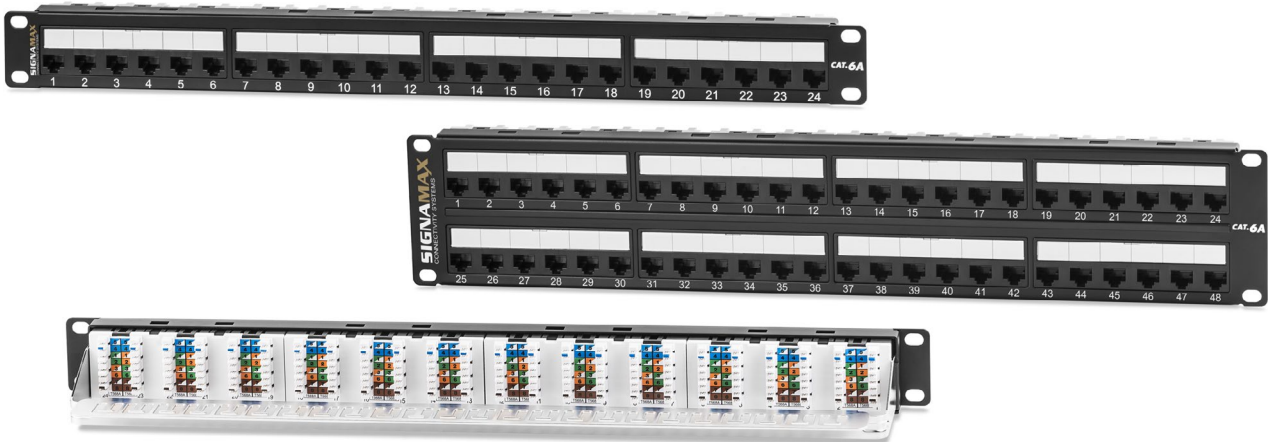
PART NO.	DESCRIPTION
KI-DIN-RMM-SL	Keystone Industrial DIN-Rail Mounting Module, 2 side lids
KI-DMM-RMM	Keystone Industrial DIN-Rail Mounting Module without side lids



Category 6A Patch Panels

Category 6A MD-Series Unscreened Patch Panels

- Exceeds ANSI/TIA-568-C.2 transmission performance specifications
- Meets IEEE 802.3an 10 Gigabit Ethernet transmission requirements
- 110-type connectors' orientation guarantees excellent alien cross-talk parameters
- Port designation features along each port for quick identification
- Removable rear cable management bar



PART NO.	DESCRIPTION
24458MD-C6AC	24-Port Category 6A MD-Series Patch Panel, 1.75" H
48458MD-C6AC	48-Port Category 6A MD-Series Patch Panel, 3.50" H

Category 6A MT-Series Screened Patch Panels

- Exceeds ANSI/TIA-568-C.2 transmission performance specifications
- Meets IEEE 802.3an 10 Gigabit Ethernet transmission requirements
- Overall solid-metal shielding design for 360° screen coverage
- Improved wire retention and ease of termination with rear 110 type contacts
- Removable rear cable management bar



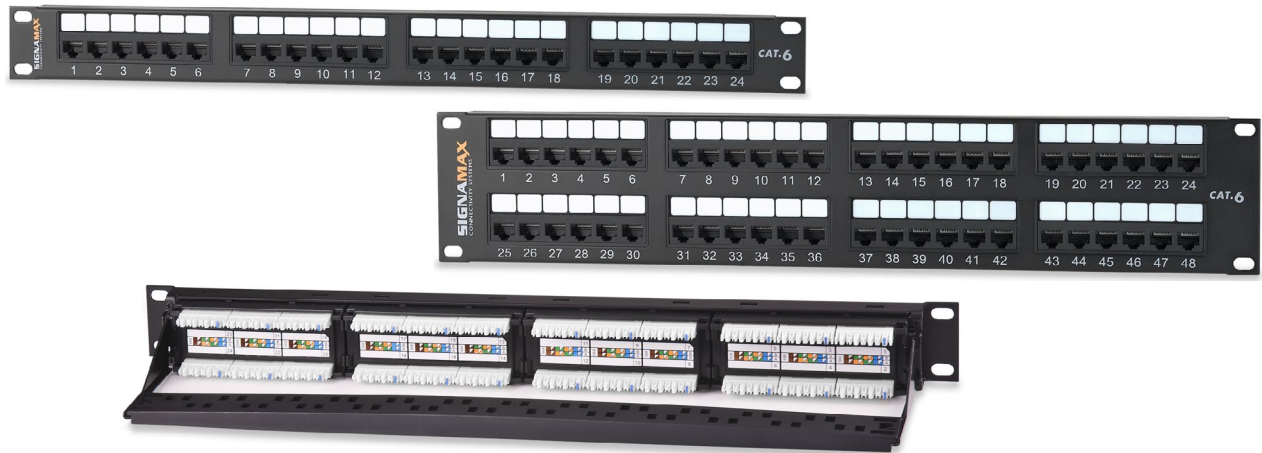
PART NO.	DESCRIPTION
24458S-C6A	24-Port Category 6A MT-Series Screened Patch Panel, 1.75" H
48458S-C6A	48-Port Category 6A MT-Series Screened Patch Panel, 3.50" H

Panels are supplied as a kit, which includes the panel, black MT-Series screened jacks per port count, a cable management bar per RMU, and cable ties.
For panels with other keystone jack color options contact Customer Service.

Category 6 Patch Panels

Category 6 MD-Series Unscreened Patch Panels

- Exceeds ANSI/TIA-568-C.2 transmission performance specifications
- Built-in PCB-based jack modules ensure Category 6 parameters
- Port designation features along each port for quick identification
- Integrated for optional snap-in cable management bar



PART NO.	DESCRIPTION
12458MD-C6C	12-Port Category 6 MD-Series Patch Panel, 1.75" H
24458MD-C6C	24-Port Category 6 MD-Series Patch Panel, 1.75" H
48458MD-C6C	48-Port Category 6 MD-Series Patch Panel, 3.50" H
CMB-250-P	Panel-Mount Cable Management Bar, 2.50" Deep

Optional cable management bar sold separately.

Category 6 MT-Series Screened Patch Panels

- Exceeds ANSI/TIA-568-C.2 transmission performance specifications
- Supports TIA-568-C.2 category 6 100 meter channel performance
- Improved wire retention and ease of termination with rear 110 type contacts
- Port designation features along each port for quick identification
- Removable rear cable management bar



PART NO.	DESCRIPTION
24458S-C6C	24-Port Category 6 MT-Series Screened Patch Panel, 1.75" H
48458S-C6C	48-Port Category 6 MT-Series Screened Patch Panel, 3.50" H

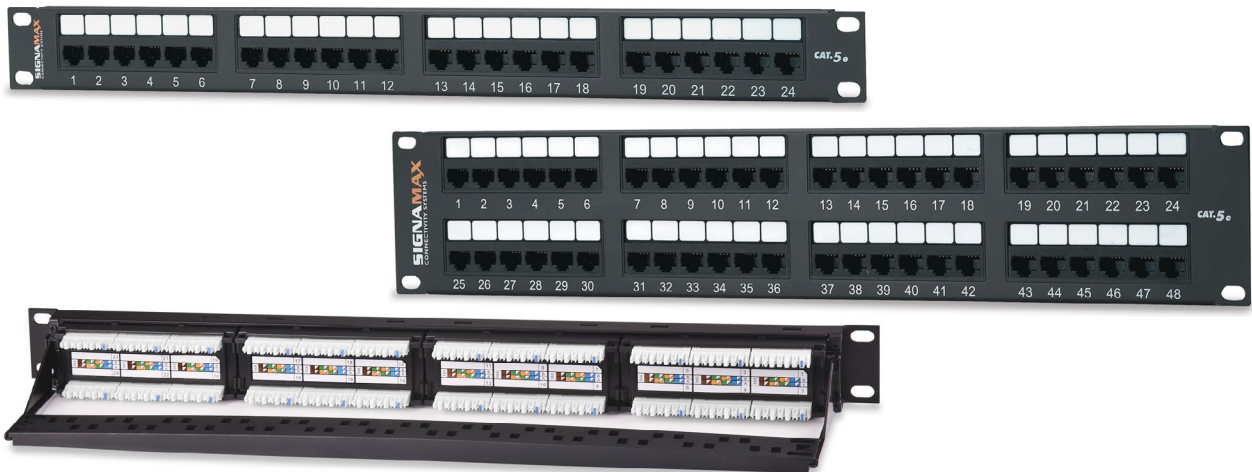
Panels are supplied as a kit, which includes the panel, black MT-Series screened jacks per port count, a cable management bar per RMU, and cable ties.

For panels with other keystone jack color options contact Customer Service.

Category 5e Patch Panels

Category 5e MD-Series Unscreened Patch Panels

- Exceeds ANSI/TIA-568-C.2 transmission performance specifications
- Built-in PCB-based jack modules ensure Category 6 parameters
- Port designation features along each port for quick identification
- Integrated for optional snap-in cable management bar



PART NO.	DESCRIPTION
12458MD-C5E	12-Port Category 5e MD-Series Patch Panel, 1.75" H
24458MD-C5E	24-Port Category 5e MD-Series Patch Panel, 1.75" H
48458MD-C5E	48-Port Category 5e MD-Series Patch Panel, 3.50" H
CMD-250-P	Panel-Mount Cable Management Bar, 2.50" Deep

Optional cable management bar sold separately.

Category 5e MT-Series Screened Patch Panels

- Exceeds ANSI/TIA-568-C.2 transmission performance specifications
- Supports TIA-568-C.2 category 5e 100 meter channel performance
- Improved wire retention and ease of termination with rear 110 type contacts
- Port designation features along each port for quick identification
- Removable rear cable management bar



PART NO.	DESCRIPTION
24458S-C5E	24-Port Category 6 MT-Series Screened Patch Panel, 1.75" H
48458S-C5E	48-Port Category 6 MT-Series Screened Patch Panel, 3.50" H

Panels are supplied as a kit, which includes the panel, black MT-Series screened jacks per port count, a cable management bar per RMU, and cable ties.

For panels with other keystone jack color options contact Customer Service.

EC-Series Patch Panels

Category 6 EC-Series Unscreened Patch Panels

- Exceeds ANSI/TIA-568-C.2 transmission performance specifications
- Built-in PCB-based jack modules ensure Category 6 & 5e parameters
- Port designation features along each port for quick identification
- Removable rear cable management bar



PART NO.	DESCRIPTION
24458EC-C6	24-Port Category 6 EC-Series Patch Panel, 1.75" H
48458EC-C6	48-Port Category 6 EC-Series Patch Panel, 3.50" H

Panels are supplied as a kit, which includes the panel, black MT-Series screened jacks per port count, a cable management bar per RMU, and cable ties.

Category 5e EC-Series Unscreened Patch Panels

- Exceeds ANSI/TIA-568-C.2 transmission performance specifications
- Supports TIA-568-C.2 category 5e 100 meter channel performance
- Built-in PCB-based jack modules ensure Category 5e parameters
- Port designation features along each port for quick identification
- Removable rear cable management bar



PART NO.	DESCRIPTION
24458EC-C5E	24-Port Category 5e EC-Series Patch Panel, 1.75" H
48458EC-C5E	48-Port Category 5e EC-Series Patch Panel, 3.50" H

Panels are supplied as a kit, which includes the panel, black MT-Series screened jacks per port count, a cable management bar per RMU, and cable ties.

Field-Configurable Patch Panels

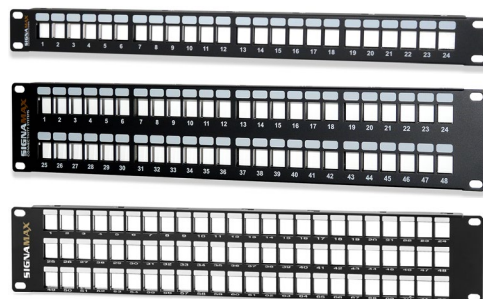
High-Density Field-Configurable Patch Panels

- Cold-rolled steel construction for maximum strength and durability
- Removable rear cable management bar
- Rear nickel-plated grounding lug

PART NO.	DESCRIPTION
PNU-HDMMP	High-Density Field Configurable Patch Panel

Specify port count by substituting **PN** in P/N for the following:

24: 24 ports, 1.75" H (1 RMU) **48:** 48 ports, 3.50" H (2 RMU) **72:** 72 ports, 5.25" H (3 RMU)



48-Port High-Density Field-Configurable Patch Panels

- 48-port density within one rack space
- Cold-rolled steel construction for maximum strength and durability
- Removable rear cable management bar

PART NO.	DESCRIPTION
48U-HDMMP-1R	48-Port High-Density Field Configurable Patch Panel, 1.75" H



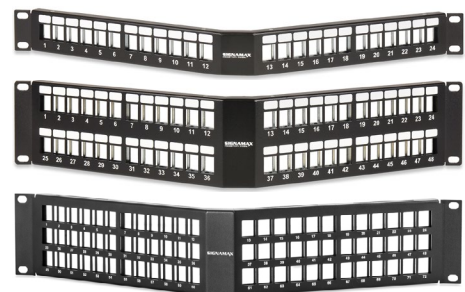
High-Density Field-Configurable Angled Patch Panels

- Cold-rolled steel construction for maximum strength and durability
- Rear nickel-plated grounding lug

PART NO.	DESCRIPTION
PNU-HDMMP-A	High-Density Field Configurable Angled Patch Panel

Specify port count by substituting **PN** in P/N for the following:

24: 24 ports, 1.75" H (1 RMU) **48:** 48 ports, 3.50" H (2 RMU) **72:** 72 ports, 5.25" H (3 RMU)



Standard-Density Field-Configurable Patch Panels

- Available in 12 to 48 port configurations for multiple applications
- Cold-rolled steel construction for maximum strength and durability
- Signamax keystone module compatible

PART NO.	DESCRIPTION
PNU-MMP	Standard-Density Field Configurable Patch Panel

Specify port count by substituting **PN** in P/N for the following:

12: 12 ports, 1.75" H (1 RMU) **16:** 16 ports, 1.75" H (1 RMU) **24:** 24 ports, 3.50" H (2 RMU)
32: 32 ports, 3.50" H (2 RMU) **48:** 48 ports, 5.25" H (3 RMU)



Wall-Mount Field-Configurable Multimedia Mini Panels

- 89D Bracket or hinged design allows easier access to termination points
- Ideal for applications where space is at a premium

PART NO.	DESCRIPTION
12U-M89	12-Port Field Configurable Multimedia Panel with 89D Bracket
12U-MH	12-Port Field Configurable Multimedia Hinged Panel



Feed-Thru Patch Panels

High-Density Feed-Thru Patch Panels

- Double female coupler provides plug to jack connection integrity
- Accommodates screened or unscreened keystone inline couplers
- Cold-rolled steel construction for maximum strength and durability
- Removable rear cable management bar



PART NO.	DESCRIPTION
24458FTHD-C	24-Port High-Density Unscreened Feed-Thru Patch Panel, 1.75" H
48458FTHD-C	48-Port High-Density Unscreened Feed-Thru Patch Panel, 3.50" H
24458SFTHD-C	24-Port High-Density Screened Feed-Thru Patch Panel, 1.75" H
48458SFTHD-C	48-Port High-Density Screened Feed-Thru Patch Panel, 3.50" H

Specify category level by substituting the **C** in P/N for the following:

C6A: Category 6A **C6:** Category 6 **C5E:** Category 5e

Wall-Mount Patch Panels

Category 6 & 5e Wall-Mount Unscreened Mini Patch Panels

- Exceeds ANSI/TIA-568-C.2 transmission performance specifications
- 89D Bracket or hinged design allows easier access to termination points
- Built-in PCB-based jack modules ensure Category 6 or 5e parameters
- Improved wire retention and ease of termination with rear 110 type contacts
- Cold-rolled steel construction for maximum strength and durability

PART NO.	DESCRIPTION
12458M-C6C	12-Port Category 6 Mini Panel with 89D-Bracket
12458MH-C6C	12-Port Category 6 Hinged Mini Panel
12458M-C5E	12-Port Category 5e Mini Panel w/89D Bracket
12458MH-C5E	12-Port Category 5e Hinged Mini Panel



Category 6A Patch Cords

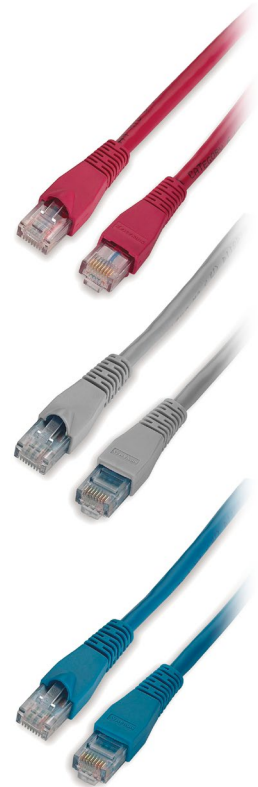
Category 6A Unscreened Patch Cords

- Meets ANSI/TIA-568-C.2 transmission performance specifications
- Meets IEEE 802.3an 10-Gigabit Ethernet transmission requirements
- 100% factory transmission tested per ANSI/TIA-568-C.2 to ensure category 6A component level performance
- ETL verified unscreened 26 AWG stranded cable
- Rated for 750 plug insertions for high level system reliability
- Enhanced plug-to-jack connection integrity

PART NO.	DESCRIPTION	LENGTH
C6A-114CC-3FB	Category 6A Unscreened Patch Cord with Snag-Proof Boots	3 ft
C6A-114CC-5FB	Category 6A Unscreened Patch Cord with Snag-Proof Boots	5 ft
C6A-114CC-7FB	Category 6A Unscreened Patch Cord with Snag-Proof Boots	7 ft
C6A-114CC-10FB	Category 6A Unscreened Patch Cord with Snag-Proof Boots	10 ft
C6A-114CC-15FB	Category 6A Unscreened Patch Cord with Snag-Proof Boots	15 ft
C6A-114CC-20FB	Category 6A Unscreened Patch Cord with Snag-Proof Boots	20 ft
C6A-114CC-25FB	Category 6A Unscreened Patch Cord with Snag-Proof Boots	25 ft

Specify cable jacket color by substituting CC in P/N for the following: -WH -YE -RD -BU -GY -BK

P/N Example: C6A-114BU-3FB - Category 6A Unscreened Patch Cord with Snag-Proof Boots, Blue, 3 ft



Category 6A Screened Patch Cords

- Meets ANSI/TIA-568-C.2 transmission performance specifications
- Meets IEEE 802.3an 10-Gigabit Ethernet transmission requirements
- 100% factory transmission tested per ANSI/TIA-568-C.2 to ensure category 6A component level performance
- 100% protection against ANEXT
- ETL verified screened 26 AWG stranded cable
- Rated for 750 plug insertions for high level system reliability
- Enhanced plug-to-jack connection integrity

PART NO.	DESCRIPTION	LENGTH
C6AS-314CC-3FB	Category 6A Screened Patch Cord with Snag-Proof Boots	3 ft
C6AS-314CC-5FB	Category 6A Screened Patch Cord with Snag-Proof Boots	5 ft
C6AS-314CC-7FB	Category 6A Screened Patch Cord with Snag-Proof Boots	7 ft
C6AS-314CC-10FB	Category 6A Screened Patch Cord with Snag-Proof Boots	10 ft
C6AS-314CC-15FB	Category 6A Screened Patch Cord with Snag-Proof Boots	15 ft
C6AS-314CC-20FB	Category 6A Screened Patch Cord with Snag-Proof Boots	20 ft
C6AS-314CC-25FB	Category 6A Screened Patch Cord with Snag-Proof Boots	25 ft

Specify cable jacket color by substituting CC in P/N for the following: -WH -YE -RD -BU -GY -BK

P/N Example: C6AS-314BU-3FB - Category 6A Screened Patch Cord with Snag-Proof Boots, Blue, 3 ft



Category 6 Patch Cords

Category 6 Unscreened Patch Cords

- Supports ANSI/TIA-568-C.2 transmission performance specifications
- 100% factory transmission tested per ANSI/TIA-568-C.2 to ensure category 6 component level performance
- ETL verified unscreened 26 AWG stranded cable
- Rated for 750 plug insertions for high level system reliability
- Enhanced plug-to-jack connection integrity



PART NO.	DESCRIPTION
C6C-114 CC -LFB	Category 6 Unscreened Patch Cord with Snag-Proof Boots
Specify cable jacket color by substituting CC in P/N for the following: -WH -YE -OR -RD -BU -GN -GY -BK	
Specify cable length by substituting L in P/N for the following: 3: 3 ft 5: 5 ft 7: 7 ft 10: 10 ft 15: 15 ft 20: 20 ft 25: 25 ft	
P/N Example: C6C-114 BU -3FB - Cat. 6 Unscreened Patch Cord with Snag-Proof Boots, Blue, 3 ft	

Category 6 Channel-Level Unscreened Patch Cords

- Supports ANSI/TIA-568-C.2 transmission performance specifications
- 100% factory transmission tested per ANSI/TIA-568-C.2 to ensure category 6 100-meter channel performance
- ETL verified unscreened 26 AWG stranded cable
- Rated for 750 plug insertions for high level system reliability
- Enhanced plug-to-jack connection integrity



PART NO.	DESCRIPTION
C6-115 CC -LFB	Category 6 Channel-Level Unscreened Patch Cord with Snag-Proof Boots
Specify cable jacket color by substituting CC in P/N for the following: -WH -YE -OR -RD -BU -GN -GY -BK	
Specify cable length by substituting L in P/N for the following: 1: 1 ft 3: 3 ft 5: 5 ft 7: 7 ft 10: 10 ft 14: 14 ft 25: 25 ft 50: 50 ft 100: 100 ft	
P/N Example: C6C-115 BU -3FB - Cat. 6 Channel-Level Unscreened Patch Cord with Snag-Proof Boots, Blue, 3 ft	

Category 6 Screened Patch Cords

- Meets ANSI/TIA-568-C.2 transmission performance specifications
- 100% factory transmission tested per ANSI/TIA-568-C.2 to ensure category 6 component level performance
- 100% protection against ANEXT
- ETL verified screened 26 AWG stranded cable
- Rated for 750 plug insertions for high level system reliability



PART NO.	DESCRIPTION
C6CS-314 GY -LFB	Category 6 Screened Patch Cord with Snag-Proof Boots
Specify cable length by substituting L in P/N for the following: 3: 3 ft 5: 5 ft 7: 7 ft 10: 10 ft 15: 15 ft 20: 20 ft 25: 25 ft	

Category 5e Patch Cords

Category 5e Unscreened Patch Cords

- Supports ANSI/TIA-568-C.2 transmission performance specifications
- 100% factory transmission tested per ANSI/TIA-568-C.2 to ensure category 5e component level performance
- ETL verified unscreened 24 AWG stranded cable
- Rated for 750 plug insertions for high level system reliability
- Enhanced plug-to-jack connection integrity

PART NO.	DESCRIPTION
C5EC-114 CC -LFB	Category 5e Unscreened Patch Cord with Snag-Proof Boots
Specify cable jacket color by substituting CC in P/N for the following: -WH -YE -OR -RD -BU -GN -GY -BK	
Specify cable length by substituting L in P/N for the following:	
3 : 3 ft 5 : 5 ft 7 : 7 ft 10 : 10 ft 15 : 15 ft 20 : 20 ft 25 : 25 ft	
P/N Example: C5EC-114 BU -3FB - Cat. 5e Unscreened Patch Cord with Snag-Proof Boots, Blue, 3 ft	



Category 5e Channel-Level Unscreened Patch Cords

- Supports ANSI/TIA-568-C.2 transmission performance specifications
- 100% factory transmission tested per ANSI/TIA-568-C.2 to ensure category 5e 100-meter channel performance
- ETL verified unscreened 24 AWG stranded cable
- Rated for 750 plug insertions for high level system reliability
- Enhanced plug-to-jack connection integrity

PART NO.	DESCRIPTION
C5E-114 CC -LFB	Category 5e Channel-Level Unscreened Patch Cord with Snag-Proof Boots
C5E-121 CC -LFB	Category 5e Channel-Level Unscreened Patch Cord without Snag-Proof Boots
Specify cable jacket color by substituting CC in P/N for the following: -WH -YE -OR -RD -BU -GN -GY -BK	
Specify cable length by substituting L in P/N for the following:	
1 : 1 ft 3 : 3 ft 5 : 5 ft 7 : 7 ft 10 : 10 ft 14 : 14 ft 25 : 25 ft 50 : 50 ft 100 : 100 ft	
P/N Example: C5E-114 BU -3FB - Cat. 5e Channel-Level Unscreened Patch Cord with Snag-Proof Boots, Blue, 3 ft	



Category 5e Screened Patch Cords

- Meets ANSI/TIA-568-C.2 transmission performance specifications
- 100% factory transmission tested per ANSI/TIA-568-C.2 to ensure category 5e component level performance
- 100% protection against ANEXT
- ETL verified screened 26 AWG stranded cable
- Rated for 750 plug insertions for high level system reliability

PART NO.	DESCRIPTION
C5ES-314 GY -LFB	Category 5e Screened Patch Cord with Snag-Proof Boots, Gray
Specify cable length by substituting L in P/N for the following:	
3 : 3 ft 5 : 5 ft 7 : 7 ft 10 : 10 ft 15 : 15 ft 20 : 20 ft 25 : 25 ft	

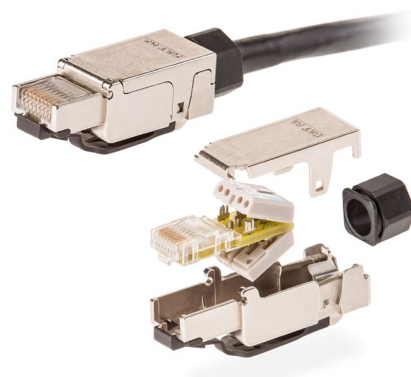


Modular Plugs & Accessories

Field-Installable Modular Plugs

- Meet ISO/IEC 11801 and ANSI/TIA-568-C.2 patch cord requirements
- Overall “360-degree” solid-metal shielding design
- 'Toolless' field termination
- PCB-based electrical design

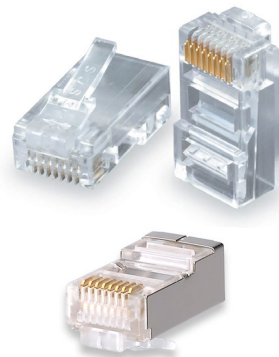
PART NO.	DESCRIPTION
KRJS45DA-C6A	Category 6A Screened Field-Installable Modular Plug
KRJS45DA-C6	Category 6 Screened Field-Installable Modular Plug
KRJS45DA-C5E	Category 5e Screened Field-Installable Modular Plug



Modular Plugs

- One piece design - sold in quantities of 100
- Rated for 750 plug insertions for high level system reliability
- 50-µin gold over 50-µin nickel plated phosphor bronze contacts

PART NO.	DESCRIPTION
KRJ45/5E-100	Category 5e Compatible 8P/8C Modular Plug for 24 AWG Unscreened Stranded Cable, Two-piece design
KRJ45/5SH-100	Category 5e Compatible 8P/8C Modular Plug for 24-26 AWG Screened Stranded Cable
KRJ45/5-100	Category 5 Compatible 8P/8C Modular Plug for 24 AWG Unscreened Stranded Cable
KRJ45/5SLD-100	Category 5e Compatible 8P/8C Modular Plug for 24 AWG Unscreened Solid Cable
KRJ12-C5/100	Voice Grade 6P/6C Modular Plug for 24 AWG UTP Stranded Cable
KRJ11-C5/100	Voice Grade 6P/4C Modular Plug for 24 AWG UTP Stranded Cable
KRJ12SLD-100	Voice Grade 6P/6C Modular Plug for 24 AWG UTP Solid Cable
KRJ45/100	Voice Grade 8P/8C Modular Plug for 28 AWG Flat Cable
KRJ12/100	Voice Grade 6P/6C Modular Plug for 28 AWG Flat Cable
KRJ11/100	Voice Grade 6P/4C Modular Plug for 28 AWG Flat Cable



Modular Crimp Tool

- Cuts, strips, & crimps both round & flat cables
- Maintains accurate alignment for a precision crimp

PART NO.	DESCRIPTION
TRJ45P	RJ-11/45 (8P/6P) Dual Crimp Tool, Ratchet Type



Strain Relief Boots

- Maintains proper bend radius to ensure performance
- Protects connector latch from damage

PART NO.	DESCRIPTION
S45SP-BC/100	Snag-Proof Strain Relief Boots, Package of 100

Specify color by substituting **BC** in P/N for the following: -WH **-YE** **-OR** **-RD** **-BU** **-GN** **-GY** **-BK**

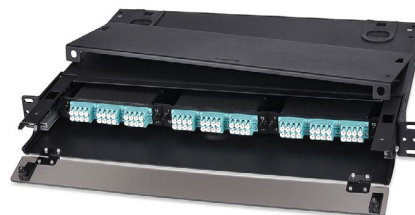


High-Density Rack-Mount Optical Fiber Enclosures

- Meets EIA/ECA-310-E mounting standards
- Front and rear hinged access panels
- Sliding tray for effortless installation
- Fiber spools to manage fiber slack
- Durable 16-gauge steel case
- Adapter plates and splice trays sold separately

18 to 72 Fiber Rack-Mount Optical Fiber Enclosure

PART NO.	DESCRIPTION
UFE3HD2-B	18 to 72 Fiber General-Purpose Rack-Mount Optical Fiber Enclosure; accepts 3 LGX adapter plates and 2 FST-XF Splice Trays within 1 RMU Dimensions: 14" D x 19" W x 1.75" H (355.6 mm x 482.6 mm x 44.45 mm)



36 to 144 Fiber Rack-Mount Optical Fiber Enclosure

PART NO.	DESCRIPTION
UFE6HD2-B	36 to 144 Fiber General-Purpose Rack-Mount Optical Fiber Enclosure; accepts 6 LGX adapter plates and 6 FST-XF Splice Trays within 2 RMUs Dimensions: 14" D x 19" W x 3.50" H (355.6 mm x 482.6 mm x 88.9 mm)



72 to 288 Fiber Rack-Mount Optical Fiber Enclosure

PART NO.	DESCRIPTION
UFE12HD2-B	72 to 288 Fiber General-Purpose Rack-Mount Optical Fiber Enclosure; accepts 12 LGX adapter plates and 12 FST-XF splice trays within 4 RMUs Dimensions: 14" D x 19" W x 7" H (355.6 mm x 482.6 mm x 177.8 mm)



Optical Fiber Splice Trays

- Meets ANSI/TIA-568-C.3 specifications
- Stackable plastic case
- Fusion termination capability
- Telcordia GR-769 compliant

PART NO.	DESCRIPTION
FST-12F	Plastic Splice Tray; Stores up to 12 Fusion splices
FST-24F	Plastic Splice Tray; Stores up to 24 Fusion splices



Optical Fiber Enclosures & Panels

Rack-Mount Low-Profile Slide-Out Optical Fiber Enclosures

- Meets EIA/ECA-310-E mounting standards
- Sliding tray for effortless installation
- Modular design allows flexible connection patterns
- Fiber spools to manage fiber slack
- Durable 16-gauge steel case
- Adapter plates and splice trays sold separately

PART NO.	DESCRIPTION
SL2M-B	12 to 48 Fiber Rack-Mount Optical Fiber Enclosure; accepts 2 LGX adapter plates and 2 FST-2M-B Splice Trays within 1 RMU Dimensions: 14" D x 19" W x 1.75" H (355.6 mm x 482.6 mm x 44.45 mm)
SL3M-B	18 to 72 Fiber Rack-Mount Optical Fiber Enclosure; accepts 3 LGX adapter plates and 2 FST-2M-B Splice Trays within 1 RMU Dimensions: 14" D x 19" W x 1.75" H (355.6 mm x 482.6 mm x 44.45 mm)



Rack-Mount Modular Optical Fiber Panels

- Meets EIA/ECA-310-E mounting standards
- Modular design allows flexible connection patterns
- Durable 16-gauge steel case
- Integrated for optional snap-in cable management bar or tray
- Adapter plates and cassettes sold separately

PART NO.	DESCRIPTION
RMF3-B	18 to 72 Fiber Rack-Mount Modular Optical Fiber Panel; accepts 3 LGX adapter plates or cassettes within 1 RMU
RMF6-B	36 to 144 Fiber Rack-Mount Modular Optical Fiber Panel; accepts 3 LGX adapter plates or cassettes within 2 RMU



Rack-Mount Modular Optical Fiber Panels w/ Cable Management

- Meets EIA/ECA-310-E mounting standards
- Modular design allows flexible connection patterns
- Durable 16-gauge steel case
- Removable rear cable management bar
- Adapter plates and cassettes sold separately

PART NO.	DESCRIPTION
RMF3B-B	18 to 72 Fiber Rack-Mount Modular Optical Fiber Panel with 1 cable management bar; accepts 3 LGX adapter plates or cassettes within 1 RMU
RMF6B-B	36 to 144 Fiber Rack-Mount Modular Optical Fiber Panel with 1 cable management bar; accepts 3 LGX adapter plates or cassettes within 2 RMU
CMB-250-P	Panel-Mount Cable Management Bar, Plastic Body, 2.50" D
CMB-550-M	Panel-Mount Cable Management Bar, Metal Body, 5.50" D



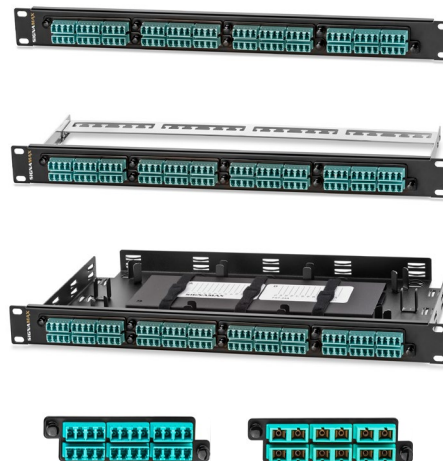
Optical Fiber Enclosures & Panels

High-Density Rack-Mount Modular Optical Fiber Panels

- Meets EIA/ECA-310-E mounting standards
- Increased termination density with 4 adapter plates in 1 RMU, up to 96 fibers
- Modular design allows flexible connection patterns
- Integrated for snap-in cable management bar or fiber management tray

PART NO.	DESCRIPTION
RMF4-B	96-Fiber Rack-Mount HD Modular Optical Fiber Panel, accepts 4 UFE1 adapter plates
RMF4B-B	96-Fiber Rack-Mount HD Modular Optical Fiber Panel with Cable Management Bar (CMB-550-M), accepts 4 UFE1 adapter plates
RMF4T-B	96-Fiber Rack-Mount HD Modular Optical Fiber Panel with Fiber Management Tray (RMF-FMT-B), accepts 4 UFE1 adapter plates
UFE1-B-12X-G	OM3/OM4 Adapter plate, 6 duplex SC or 6 quadruplex LC adapters
UFE1-B-12X-C	SM Adapter plate, 6 duplex SC or 6 quadruplex LC adapters

Specify adapter type by substituting X in P/N with the following: **SC**: SC adapters **LC**: LC adapters



Wall-Mount Optical Fiber Enclosures

- Termination density ranges 12 to 96 optical fibers
- Modular design allows flexible connection patterns
- Front accessible via hinged door with security lock option
- Durable 16-gauge steel case
- Adapter plates sold separately

PART NO.	DESCRIPTION
WFE2-B	12 to 48 Fiber Wall-Mount Optical Fiber Enclosure; accepts 2 adapter plates Dimensions: 3.50" D x 10" W x 9" H (88.9 mm x 254.0 mm x 228.6 mm)
WFE4-B	24 to 96 Fiber Wall-Mount Optical Fiber Enclosure; accepts 4 adapter plates Dimensions: 3.50" D x 10" W x 15" H (88.9 mm x 254.0 mm x 381.0 mm)



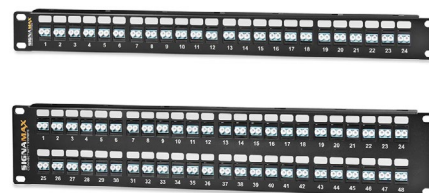
High-Density Optical Fiber Panels

- Meets EIA/ECA-310-E mounting standards
- Increased termination per RMU due to compact adapter population
- Compatible with all Signamax optical fiber keystone modules
- Removable rear cable management bar

PART NO.	DESCRIPTION
24HDX-FT	24-Port High-Density Optical Fiber Panel, 1.75" H (1 RMU)
48HDX-FT	48-Port High-Density Optical Fiber Panel, 3.50" H (2 RMU)

Specify adapter type by substituting X in P/N with the following:

ST : ST OM1/OM2		STS : ST SM UPC	
FC : FC OM1/OM2		FCS : FC SM UPC	
SC : SC OM1/OM2	SCG : SC OM3/OM4	SCS : SC SM UPC	SCA : SC SM APC
LC : LC OM1/OM2	LCG : LC OM3/OM4	LCS : LC SM UPC	LCA : LC SM APC



Optical Fiber Adapter Plates

- Meets EIA/ECA-310-E mounting standards
- Maximum density is 16 ports per RMU
- Compatible with all Signamax optical fiber enclosures and modular panels
- Removable rear cable management bar

Blank Adapter Plates

PART NO.	DESCRIPTION
UFE-B-BL	Blank Filler Plate
UFE-B- XA -B	Adapter Plate without Adapters

Specify adapter configuration by substituting **X** in P/N with the following:

ST/FC: **06**: 6 fibers/adapters **08**: 8 fibers/adapters **12**: 12 fibers/adapters

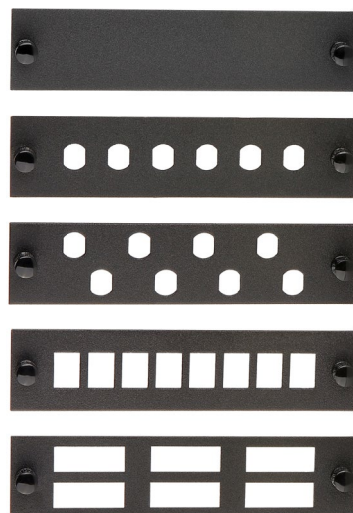
SC/LC: **06**: 12 fibers/6 duplex adapters **Q6**: 12 fibers/3 quadruplex adapters

08: 16 fibers/8 duplex adapters **12**: 24 fibers/6 quadruplex adapters

Specify adapter type by substituting **A** in P/N with the following:

ST: ST type **FC**: FC type **SC**: SC type

P/N Example: UFE-B-**06SC**-B - 6 Simplex-SC or 6 Duplex-LC Adapter Plate without Adapters



ST Adapter Plates

PART NO.	DESCRIPTION
UFE-B- XST	ST OM1/OM2 Adapter Plate
UFE-B- XST -C	ST UPC SM Adapter Plate

Specify ST adapter configuration by substituting **X** in P/N with the following:

06: 6 fibers/adapters **08**: 8 fibers/adapters **12**: 12 fibers/adapters

P/N Example: UFE-B-**08ST** - 8 Fiber ST OM1/OM2 Adapter Plate



LC Adapter Plates

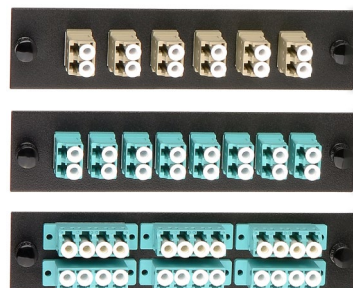
PART NO.	DESCRIPTION
UFE-B- XLC	LC OM1/OM2 Adapter Plate, Beige Adapters
UFE-B- XLC -G	LC OM3/OM4 Adapter Plate, Aqua Adapters
UFE-B- XLC -C	LC UPC SM Adapter Plate, Blue Adapters

Specify LC adapter configuration by substituting **X** in P/N with the following:

06: 6 fibers/adapters **Q6**: 12 fibers/3 quadruplex adapters

08: 8 fibers/adapters **12**: 24 fibers/6 quadruplex adapters

P/N Example: UFE-B-**12LC**-C - 24 Fiber/6 Quadruplex LC UPC SM Plate, Blue Adapters



SC Adapter Plates

PART NO.	DESCRIPTION
UFE-B- XSC	SC OM1/OM2 Adapter Plate, Beige Adapters
UFE-B- XSC -G	SC OM3/OM4 Adapter Plate, Aqua Adapters
UFE-B- XSC -C	SC UPC SM Adapter Plate, Blue Adapters

Specify SC adapter configuration by substituting **X** in P/N with the following:

06: 6 fibers/ 6 simplex adapters **D6**: 6 fibers/ 3 duplex adapters

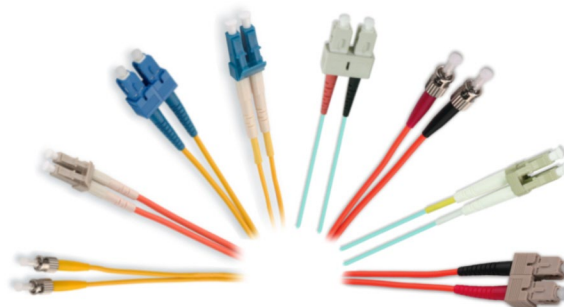
08: 8 fibers/ 8 simplex adapters **12**: 12 fibers/ 6 duplex adapters

P/N Example: UFE-B-**D6SC**-G - 6 Fiber/3 Duplex SC OM1/OM2 Adapter Plate, Aqua Adapters



Premium Optical Fiber Patch Cords

- Supports ANSI/TIA-568-C.2 transmission performance specifications
- 100% factory tested for insertion and return loss
- Cordage is color-coded per ANSI/TIA-598-C
- Connector bodies is color-coded per ANSI/TIA-568-C.3
- Slim-profile boots with durable flexible cable strain relief
- Insertion Loss: MM: 0.20 dB typical/0.30 dB max
SM: 0.15 dB typical/0.25 dB max
- Return Loss: PC: ≤ -30 dB UPC: ≤ -50 dB APC: ≤ -60 dB



OM1/OM2 Optical Fiber Patch Cord P/N Configuration:

FIBER CORD	CABLE TYPE	FIBER TYPE	JACKET TYPE	CABLE OD	CONNECTOR END 1	CONNECTOR END 2	LENGTH	UNIT OF MEASURE
FC	X	X	X	X	X	X	X	X
	D: Duplex	6: OM1	R: Riser	1: 2 mm	2: ST	2: ST	001-999	F: Feet
	S: Simplex	5: OM2	P: Plenum	3: 3 mm	4: SC	4: SC		M: Meters
					5: FC	5: FC		
					9: LC	9: LC		

P/N Example: **FC-D6R3-4-4-010M** - Optical fiber patch cord, SC to SC, Duplex, OM1, riser-rated, 3 mm OD, 10 m length

OM3/OM4 Optical Fiber Patch Cord P/N Configuration:

FIBER CORD	CABLE TYPE	FIBER TYPE	JACKET TYPE	CABLE OD	CONNECTOR END 1	CONNECTOR END 2	LENGTH	UNIT OF MEASURE
FC	X	X	X	X	X	X	X	X
	D: Duplex	51: OM3	R: Riser	1: 2 mm	4: SC	4: SC	001-999	F: Feet
	S: Simplex	52: OM4	P: Plenum	3: 3 mm	9: LC	9: LC		M: Meters

P/N Example: **FC-D51P1-9-9-010M** - Optical fiber patch cord, SC to SC, Duplex, OM1, riser-rated, 3 mm OD, 10 m length

Singlemode Optical Fiber Patch Cord P/N Configuration:

FIBER CORD	CABLE TYPE	FIBER TYPE	JACKET TYPE	CABLE OD	CONNECTOR END 1	CONNECTOR END 2	LENGTH	UNIT OF MEASURE
FC	X	X	X	X	X	X	X	X
	D: Duplex	6: OM1	R: Riser	1: 2 mm	2: ST UPC	2: ST UPC	001-999	F: Feet
	S: Simplex	5: OM2	P: Plenum	3: 3 mm	4: SC UPC	4: SC UPC		M: Meters
					4A: SC APC	4A: SC APC		
					5: FC UPC	5: FC UPC		
					5A: FC APC	5A: FC APC		
					9: LC UPC	9: LC UPC		
					9A: LC APC	9A: LC APC		

P/N Example: **FC-D51P1-9-9-010M** - Optical fiber patch cord, SC to SC, Duplex, OM1, riser-rated, 3 mm OD, 10 m length

Optical Fiber Patch Cords

- Supports ANSI/TIA-568-C.2 transmission performance specifications
- 100% factory tested for insertion and return loss
- Connector bodies are color-coded per ANSI/TIA-568-C.3

OM1 and OM2 Multimode Optical Fiber Patch Cords

PART NO.	DESCRIPTION
FC-P-LM	Duplex OM1 Multimode Optical Fiber Patch Cord
FC50-P-LM	Duplex OM2 Multimode Optical Fiber Patch Cord

Specify plug type by substituting **P** in P/N for the following:

2/2: ST/ST **4/4:** SC/SC **9/9:** LC/LC **4/2:** SC/ST **9/2:** LC/ST **9/4:** LC/SC

Specify cable length by substituting **L** in P/N for the following: **1:** 1 m **2:** 2 m **3:** 3 m

OM3 Multimode Optical Fiber Patch Cords

PART NO.	DESCRIPTION
FC51-P-LM	Duplex OM3 Multimode Optical Fiber Patch Cord

Specify plug type by substituting **P** in P/N for the following: **4/4:** SC/SC **9/9:** LC/LC **9/4:** LC/SC

Specify cable length by substituting **L** in P/N for the following: **1:** 1 m **2:** 2 m **3:** 3 m

Singlemode Optical Fiber Patch Cords

PART NO.	DESCRIPTION
FC9S-P-LM	Simplex Singlemode Optical Fiber Patch Cord
FCS-P-LM	Duplex Singlemode Optical Fiber Patch Cord

Specify plug type by substituting **P** in P/N for the following:

2/2: ST/ST **4/4:** SC/SC **9/9:** LC/LC **4/2:** SC/ST **9/2:** LC/ST **9/4:** LC/SC

Specify cable length by substituting **L** in P/N for the following: **1:** 1 m **2:** 2 m **3:** 3 m



Field-Installable Pre-Polished Optical Fiber Connectors

- Supports ANSI/TIA/EIA-568-C.3 transmission performance specifications
- 100% factory tested for insertion and return loss
- Pre-polished connectors reduces installation time
- Connector assembly jigs shorten installation and improve accuracy

PART NO.	DESCRIPTION
FPC-SC06-02	SC OM1 Pre-Polished Optical Fiber Connector, Beige
FPC-SC05-02	SC OM2 Pre-Polished Optical Fiber Connector, Black
FPC-SC06-02	SC OM3 Pre-Polished Optical Fiber Connector, Aqua
FPC-SC06-02	SC SM Pre-Polished Optical Fiber Connector, Blue
FPC-SC06-02	LC OM1 Pre-Polished Optical Fiber Connector, Beige
FPC-SC06-02	LC OM2 Pre-Polished Optical Fiber Connector, Black
FPC-SC06-02	LC OM3 Pre-Polished Optical Fiber Connector, Aqua
FPC-SC06-02	LC SM UPC Pre-Polished Optical Fiber Connector, Blue

Fiber connectors are sold in packages of six.

Optical Fiber Connector Assembly Jigs

PART NO.	DESCRIPTION
FPC-JIG-02-SC	SC Connector Assembly Jig
FPC-JIG-02-LC	LC Connector Assembly Jig

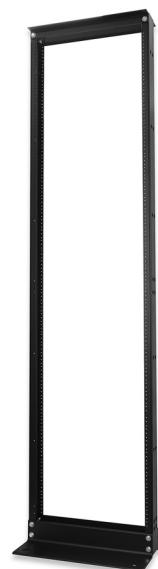


Equipment Racks

Two-Post Equipment Racks

- Meets EIA/ECA-310-E mounting standards
- Double tapped 10-32 mounting holes on the front and rear rails
- Constructed with durable & corrosion resistance 6063-T6 aluminum
- Perforated holes for floor anchoring
- Supplied with assembly hardware

PART NO.	DESCRIPTION
RR-48B	Equipment Rack at 48 inches High (24 RMU), Black Finish
RR-84B	Equipment Rack at 84 inches High (45 RMU), Black Finish



Vertical Cable Management for Equipment Racks

- Meets EIA/ECA-310-E mounting standards
- Easy-to-remove snap-on front and back panels
- Routing and retaining slots located along the base
- Plastic lightweight design for effortless cable management

PART NO.	DESCRIPTION
VCM-84FR-S	Vertical Cable Management for 84" High Equipment Rack, Side Mount, 4" W x 5" H Wiring Duct Front and Back
VCM-84FR-C	Vertical Cable Management for 84" High Equipment Rack, Center Mount, 4" W x 5" H Wiring Duct Front and Back
VCM-84F-S	Vertical Cable Management for 84" High Equipment Rack, Side Mount, 4" W x 5" H Wiring Duct Front Only



Rack Mount Shelves

- Meets EIA/ECA-310-E mounting standards
- Maximum 50 lbs. capacity for each shelf
- Durable 16-gauge steel construction

PART NO.	DESCRIPTION
ERB-14CS	Cantilever Solid Bottom Shelf, Black, 3.5" H x 14" D
ERB-14C	Cantilever Vented Bottom Shelf, Black, 3.5" H x 14" D
ERB-18CS	Cantilever Offset Solid Bottom Shelf, Black, 3.5" H x 18" D
ERB-18C	Cantilever Offset Vented Bottom Shelf, Black, 3.5" H x 18" D
ERB-19CS	Center Weight Solid Bottom Shelf, Black, 3.5" H x 19" D
ERB-19C	Center Weight Solid Vented Shelf, Black, 3.5" H x 19" D



Equipment Brackets

Hinged Wall-Mount Brackets

- Meets EIA/ECA-310-E mounting standards
- Versatile right or left-handed swing
- Cable access holes on both the rear and sides
- Durable 16-gauge steel construction

PART NO.	DESCRIPTION
HWB-175	1-RMU Hinged wall-mount bracket, 1.75" H x 6" D
HWB-350	2-RMU Hinged wall-mount bracket, 3.50" H x 6" D
HWB-525	3-RMU Hinged wall-mount bracket, 5.25" H x 6" D
HWB-700	4-RMU Hinged wall-mount bracket, 7.00" H x 6" D
HWB-875	5-RMU Hinged wall-mount bracket, 8.75" H x 6" D



Patch Cord and Cable Management Panels

- Meets EIA/ECA-310-E mounting standards
- High impact UL94V-0 flame retardant thermoplastic rings and clips
- Durable 16-gauge steel panel

Panels with Distribution Rings & Routing Clips

PART NO.	DESCRIPTION	RMU
CMP-175	Panel with 2 Vertical 3" x 3" Distribution Rings & Routing Clips	1
CMP-350	Panel with 2 Vertical 3" x 3" Rings plus 4 Horizontal Rings & Routing Clips	2

Panels with Distribution Rings

PART NO.	DESCRIPTION	RMU
CMP-175-A	Panel with 5 Horizontal 1.75" x 3" Distribution Rings	1
CMP-350-A	Panel with 5 Horizontal 3" x 3" Distribution Rings	2

Panels with Distribution Rings & Wiring Duct

PART NO.	DESCRIPTION	RMU
CMP-175-AD	Panel with 5 Horizontal 1.75" x 3" Distribution Rings & 1.5" x 3" Wiring Duct on back	1
CMP-350-AD	Panel with 5 Horizontal 3" x 3" Distribution Rings & 3" x 3" Wiring Duct on back	2

Panels with Front Wiring Duct

PART NO.	DESCRIPTION	RMU
CDP-175-A	Panel with 1.5" x 3" Wiring Duct on Front	1
CDP-350-A	Panel with 3" x 3" Wiring Duct on Front	2

Panels with Front & Back Wiring Ducts

PART NO.	DESCRIPTION	RMU
CDP-175-A	Panel with 1.5" x 3" Wiring Duct on Front & 1.5" x 3" Wiring Duct on back	1
CDP-350-A	Panel with 3" x 3" Wiring Duct on Front & 3" x 3" Wiring Duct on back	2



Equipment Cabinets & Accessories

Wall-Mount Equipment Cabinets

- Meets EIA/ECA-310-E mounting standards
- Removable side doors with locking mechanism
- Removable 180-degree swing on toughened glass door on front
- Top & bottom knockout cable entry slots
- Adjustable equipment mounting flanges for 3 levels of depth
- Cold-rolled steel construction for maximum strength and durability



PART NO.	DESCRIPTION	RMU	H	D	Wt.
Single Section Cabinets					
WEC-S-06-600/450-BK	Wall-mount equipment cabinet, Single section, Black	6	10.5"	17.7"	62 lbs.
WEC-S-09-600/450-BK	Wall-mount equipment cabinet, Single section, Black	9	15.75"		64 lbs.
WEC-S-12-600/450-BK	Wall-mount equipment cabinet, Single section, Black	12	21.0"		66 lbs.
WEC-S-15-600/450-BK	Wall-mount equipment cabinet, Single section, Black	15	26.25"		68 lbs.
Dual Section Cabinets					
WEC-D-06-600/550-BK	Wall-mount equipment cabinet, Dual section, Black	6	10.5"	21.65"	66 lbs.
WEC-D-09-600/550-BK	Wall-mount equipment cabinet, Dual section, Black	9	15.75"		66 lbs.
WEC-D-12-600/550-BK	Wall-mount equipment cabinet, Dual section, Black	12	21.0"		68 lbs.
WEC-D-15-600/550-BK	Wall-mount equipment cabinet, Dual section, Black	15	26.25"		75 lbs.
WEC-D-15-600/600-BK	Wall-mount equipment cabinet, Dual section, Black	15	26.25"	23.62"	79 lbs.
WEC-D-18-600/550-BK	Wall-mount equipment cabinet, Dual section, Black	18	31.5"	21.65"	86 lbs.
WEC-D-18-600/600-BK	Wall-mount equipment cabinet, Dual section, Black	18	31.5"	23.62"	86 lbs.
Cabinet Accessories					
WEC-CF-2	Cooling fan assembly, 2 fans, 2-m (6-ft) cord with NEMA 5-15 plug, black				
WEC-MH-CN-50	Mounting hardware, screw/cage-nut/washer, 50 sets in a PE bag				

Relocatable Power Taps

- Meets EIA/ECA-310-E mounting standards
- Integrated circuit breakers and power indicators
- Additional brackets for 90 degree mounting
- Model RPT-120015CB has adjustable power cord angle



PART NO.	DESCRIPTION
RPT-020820CB	RPT with 2 Front/8 Rear NEMA 5-20R Sockets, NEMA 5-20P Cord, Heavy-Duty Metal Enclosure
RPT-040820CB	RPT with 4 Front/8 Rear NEMA 5-20R Sockets, NEMA 5-20P Cord, Heavy-Duty Metal Enclosure
RPT-120015CB	RPT with 12 Front NEMA 5-15R Sockets, NEMA 5-15P Cord, Plastic Enclosure



999 N.W. 159th Drive, Miami, FL 33169. • 800.446.2377 • www.signamax.com