

Quazite Selection Guide



Style Guide – Tailored Product Variety.

We offer a wide variety of box styles in order to meet your most specialized enclosure needs. Each style offers specific strengths and assets for diverse functionality

• PG Style

Straight sides allow for easy adjustment of box should the grade level change. Used for a variety of purposes, such as a splice box, pull box, equipment enclosure, or for any application requiring easy access to an underground service. PG boxes are stackable for increased depth.



• PC Style

Straight sides allow for easy adjustment of box should the grade level change. All PC boxes are stackable and are available with gasketing.



• PX Style

PX Styles are excellent for service box assemblies and offer flared design to prevent frost heave. PX boxes are also nestable for compact storage.



• PT Style

The flared design prevents frost heave, and covers are interchangeable with many precast concrete parts. PT boxes are also nestable for compact storage.



• PD Style

These enclosures feature a 1 degree flare for maximum strength. Flared design optimizes internal volume and minimizes frost heave.

Quazite: Available Size Chart

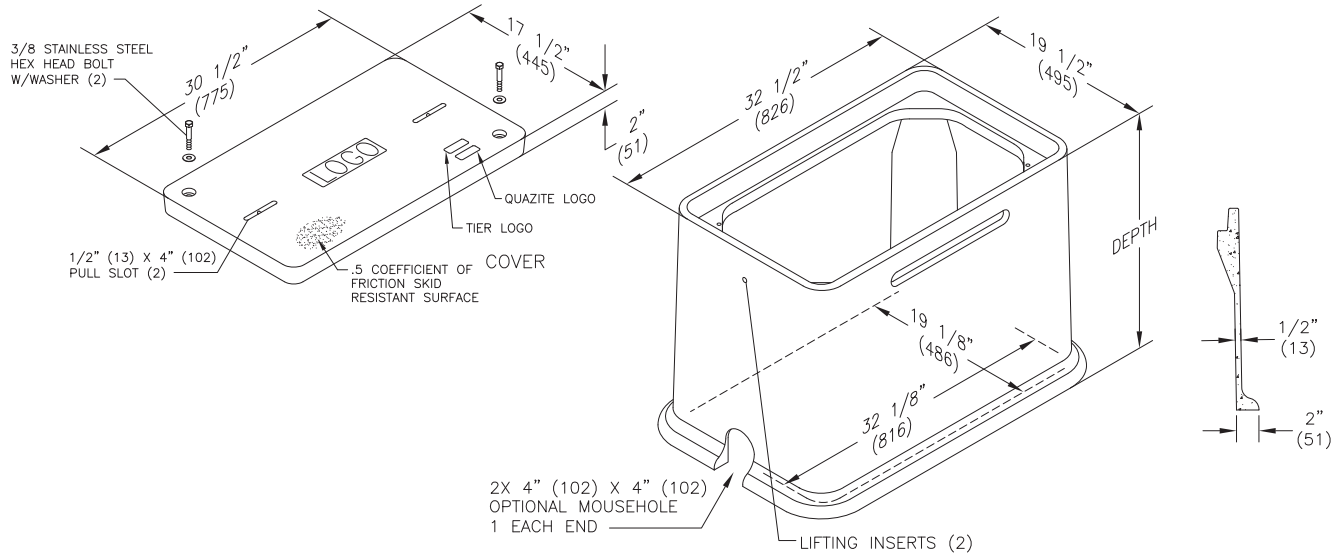
Style	Size	Depths	Assembly Load Rating Options	UL
PC	6x8	6 3/4	Tier 15	Yes
	8x8	12, 18	Tier 15	Yes
	8x18	7, 8	Tier 8, Tier 15	Yes
	11x18	12, 18	Tier 8	Yes
	12x12	12	Tier 8, Tier 15	Yes
	13x24	12	Tier 5	Yes
	17x30	12	Tier 5	Yes
PD	13x24	18, 26	Tier 8, Tier 15, Tier 22	No
	17x30	18, 26	Tier 8, Tier 15, Tier 22	Yes
	24x36	18, 26, 48	Tier 8, Tier 15, Tier 22	Yes
	30x48	24, 48	Tier 8, Tier 15, Tier 22	Yes
PG	10x15	12	Tier 8, Tier 15, Tier 22	No
	11x18	12, 18	Tier 8, Tier 15, Tier 22	Yes
	11x20	12, 18	Tier 8, Tier 15, Tier 22	No
	13x24	12, 18, 24	Tier 8, Tier 15, Tier 22	Yes
	17x30	12, 18, 22, 24, 30	Tier 8, Tier 15, Tier 22	Yes
	24x24	24 (Extensions Available)	Tier 8, Tier 15, Tier 22	Yes
	24x36	18, 24, 30, 36, 42 (Extensions Available)	Tier 8, Tier 15, Tier 22	Yes
	30x48	18, 24, 36, 48 (Extensions Available)	Tier 8, Tier 15, Tier 22	Yes
	30x60	21, 30, 36	Tier 5, Tier 15, Tier 22	No
	36x36	36 (Extensions Available)	Tier 8, Tier 15, Tier 22	Yes
	36x60	19, 24, 31, 36 (Extensions Available)	Tier 5, Tier 15, Tier 22	No
	36x72	21, 36	Tier 5, Tier 15, Tier 22	No
	48x48	36, 48	Tier 5, Tier 15, Tier 22	No
	48x60	48	Tier 22	No
	48x72	36, 48 (Extensions Available)	Tier 5, Tier 15, Tier 22	No
	48x78	27, 36	Design 12,000 lbs / Test 24,000 lbs	No
	48x96	48 (Extensions Available)	Tier 5, Tier 15, Tier 22	No
PT	10x15	18	Tier 8, Tier 15	No
	13x24	18	Tier 8, Tier 15	Yes
	17x30	18	Tier 8, Tier 15	Yes
PX	12x12	24	Tier 8, Tier 15	Yes
Median	5x16		Tier 8, Tier 15	No
	10x12		Tier 8, Tier 15	No
Round	27	36, 48	Tier 8, Tier 15, Tier 22	Tier 8 ONLY
	39	18, 24, 36, 48, 72	Tier 8, Tier 15, Tier 22	Yes

QUAZITE

Dimensions / Data

17" x 30" PD Style Polymer Concrete Assembly

Hex Head Bolts are Standard



Covers

	DESCRIPTION	TIER	DESIGN / TEST LOAD #	WEIGHT #	PALLET QTY	PART NO.
UL	W/ 2 Bolts	8	8,000 / 12,000	52	20	PG1730CA00**
UL	W/ 2 Bolts	15	15,000 / 22,500	83	20	PG1730HA00**
UL	W/ 2 Bolts	22	22,500 / 33,750	83	20	PG1730HH00**
UL	No Bolts	8	8,000 / 12,000	52	20	PG1730WA00**

To order gasketed covers, replace the letter "A" with the letter "G".

Replace ** with a logo code found on page 62. See page 68 for meter and touch/radio read cover options.

Boxes

	DESCRIPTION	DEPTH	TIER	DESIGN / TEST LOAD #	WEIGHT #	PALLET QTY	PART NO.
UL	Standard Open Bottom	18"	22	22,500 / 33,750	129	4	PD1730BA18
UL	Open Bottom	26"	22	22,500 / 33,750	166	4	PD1730BA26

To order boxes with 2 standard mouseholes, replace the letter "A" with the letter "B".

To order gasketed boxes, replace the letter "A" with the letter "G".

NOTE: Gasketed covers and bolt grommets must be used with a gasketed box. Gaskets reduce the inflow of fluids but do not make the enclosure water tight.

EZ AUGER™ Upgrade Kits

Most existing Quazite polymer concrete enclosures can be upgraded to EZ Auger™ bolt technology. Upgrade kits are available for most enclosures in both hex head and penta head configurations.

HEX HEAD KIT	Quazite's Self-Cleaning EZ Auger™ Bolt System Upgrade Kit for Polymer Concrete Enclosures (Each assembly includes 2 HEX HEAD EZ Auger™ bolts, 2 EZ Auger™ nuts and 2 washers)			
	Thread	Part No.	UPC # 66-2037	Cover Application
	3/8-7 Lag Thread	C082500	12861	PC0608, PC0818, PC1012, PC1118, PC1212, PC1324, PC1730, PX1324, PX1730, PR2700
	3/8-7 Lag Thread	C082507	18369	PG1015, PG1118
	3/8-7 Lag Thread	C082505	12862	PG1324, PG1730
	3/8-7 Lag Thread	C082510	12863	PG2436, PG3048, PG3636
	3/8-7 Lag Thread	C082512	17590	PG3048 Overlapping
	1/2-6 Lag Thread	C082522	17591	LG3660
	1/2-6 Lag Thread	C082524	17592	PG3660 Overlapping
	1/2-6 Lag Thread	C082526	17593	PG3060, PG3672, PG4848, PG4872, PG4896
	1/2-6 Lag Thread	C082528	17594	PG3060 Overlapping
PENTA HEAD KIT	Hubbell's Self-Cleaning EZ Auger™ Bolt System Upgrade Kit for Polymer Concrete Enclosures (Each assembly includes 2 PENTA HEAD EZ Auger™ bolts, 2 EZ Auger™ nuts and 2 washers)			
	Thread	Part No.	UPC # 66-2037	Cover Application
	3/8-7 Lag Thread	C082600	18378	PC0608, PC0818, PC1012, PC1118, PC1212, PC1324, PC1730, PX1324, PX1730, PR2700
	3/8-7 Lag Thread	C082607	18379	PG1015, PG1118
	3/8-7 Lag Thread	C082605	18377	PG1324, PG1730
	3/8-7 Lag Thread	C082610	18376	PG2436, PG3048, PG3636
	3/8-7 Lag Thread	C082612	18375	PG3048 Overlapping
	1/2-6 Lag Thread	C082622	18374	LG3660
	1/2-6 Lag Thread	C082624	18373	PG3660 Overlapping
	1/2-6 Lag Thread	C082626	18372	PG3060, PG3672, PG4848, PG4872, PG4896
	1/2-6 Lag Thread	C082628	18371	PG3060 Overlapping

Polymer Concrete Enclosure Options:

Bolt Holes

Sizes

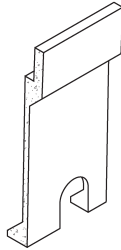
3/8"
1/4"
1/2"

Mouseholes

There is no additional charge for mouseholes in the standard size and location for their respective enclosures. PC0608, PC0818 and PC1212 boxes usually do not have mouseholes. See pg. 139 for locations.

Mousehole Sizes Standard on Boxes

2-1/2" x 4"	LT1015, PC1118, PG1118
4" x 4"	PC1324, PT1324, PC1730, PT1730, PG1324, PG2424, PG1730, PD1730, PG2436, PG3048, PD3048, PG3636
6" x 8"	PG3060, PG3660, PG3672, PG4848, PG4872, PG4896



Special order boxes with holes (or mouseholes, etc.) may qualify for UL Listing as long as the holes do not exceed more than 25% of the area of each sidewall and as long as the holes do not cut into a structural reinforcing rib, corner, or box lip.

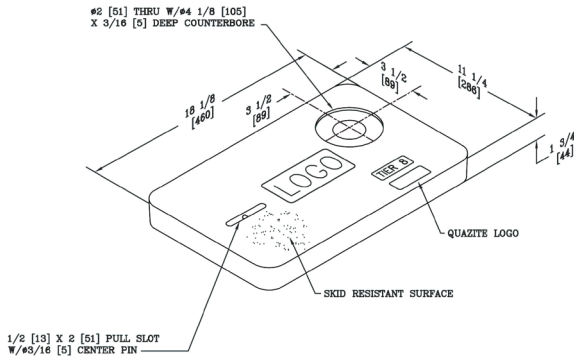
Other sizes available. Contact your local HUBBELL®/QUAZITE® representative for information.

Pull Slots

The standard cover pull slot measures 1/2" x 4". Bell cover pull slots measuring 1" x 4" are available upon request.

Touch/Radio Read Option

Holes for touch or radio read applications can be provided in covers as needed.



Inserts - 18-8 Stainless Steel

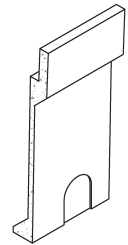
Available Sizes

3/8" or 1/2"

Inserts must be located in ribs. See page 139 for rib locations.

Mousehole Knockouts

There is no additional charge for mousehole knockouts in the standard size and location for their respective enclosures. Contact your local HUBBELL®/QUAZITE® representative for size options. See pg. 139 for locations.



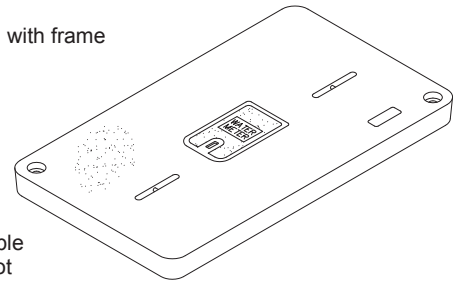
Hinged Meter Lids*

Available Sizes

Cast iron 4 1/2" x 7 1/2" lid

Cast iron 6" x 9" lid

Cast iron 9" x 12" lid with frame



*Select sizes available in Tier 15. Tier 22 not available.

Drop-in Meter Lids*

Available Sizes

Polymer concrete 6" x 9" drop-in lid

Polymer concrete 7" x 13" drop-in lid

Polymer concrete 9" x 15" drop-in lid

*Select sizes available in Tier 15. Tier 22 not available.

